



sam. Shepparton Art Museum
 John Wardle Architects T.C.L.

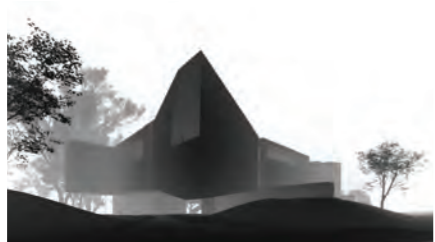
A Village, A Collection, A Community

Our design makes room for many stories, it allows for different interpretations and gently provokes the visitor to consider the museum and its landscape in relation to river, lake and its collection.

The porcelain vessels of 'Sand Still Life' by the late Gwyn Hanssen Pigott

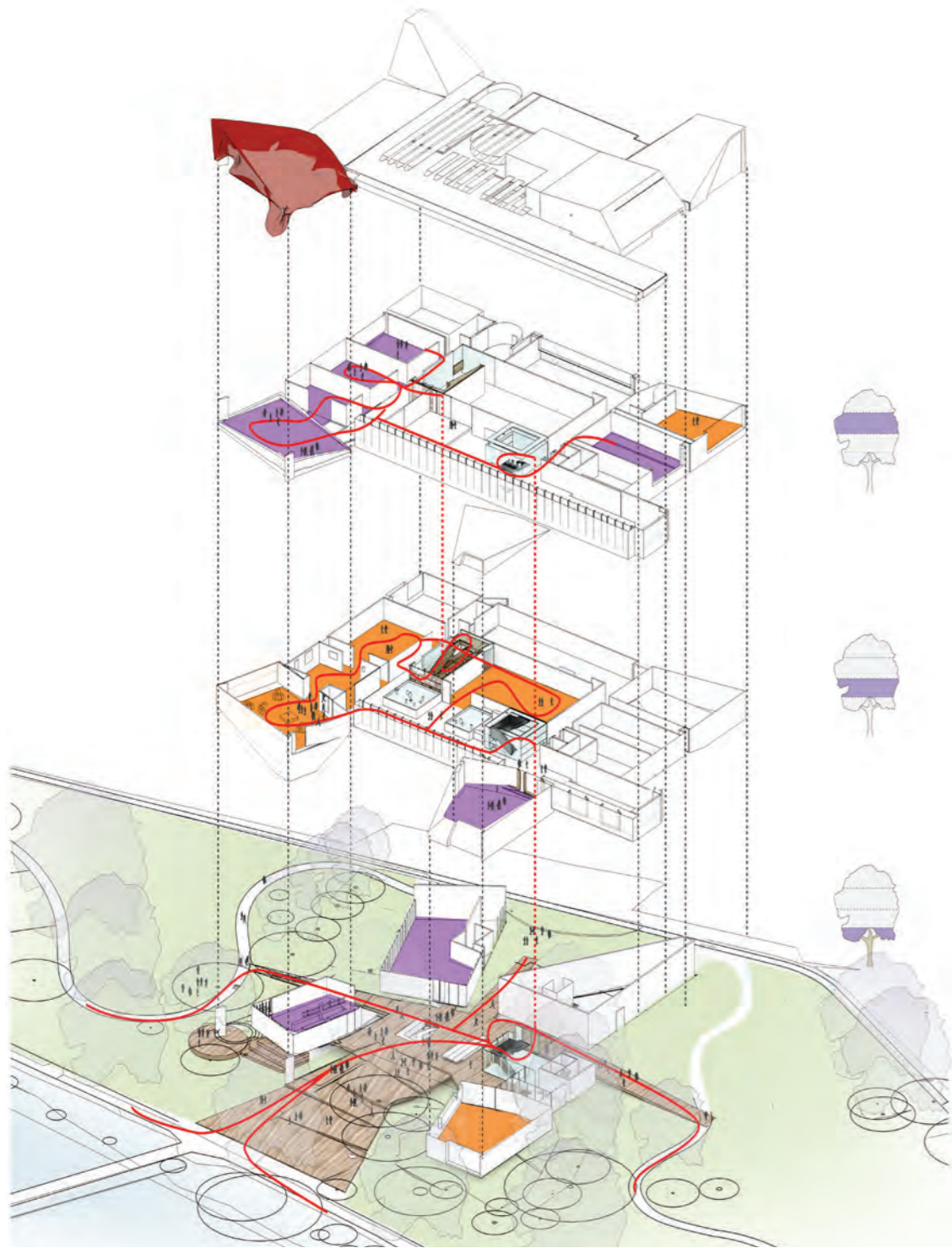


A collective, a cluster or village of elements that express internal shifts in program



Ceramic Vase prototype by JWA and Simon Lloyd







- Ground
1:750
- 1 Raised Community Deck @ RL112.9
 - 2 Gallery Kaiela
 - 3 Reception
 - 4 Workshop & visitor space
 - 5 Staff
 - 6 SAM entry through vertical storage display
 - 7 Loading & Storage
 - 8 Shepparton Visitor's Centre
 - 9 Staff & volunteers
 - 10 Cafe
 - 11 Public amenities
 - 12 Community seat
 - 13 Stepped decking plaza
 - 14 River as a path
 - 15 Lawn amphitheatre
 - 16 Screening burm
 - 17 Car park
 - 18 Relocated lightweight BBQ shelter
 - 19 Kaiela garden
 - 20 Indigenous garden
 - 21 New pedestrian crossing

Level 03
1:750
1 Plant



Level 02
1:750

- 1 Children's discovery space
- 2 Community gallery
- 3 Community workshops
- 4 Storage
- 5 Staff Terrace
- 6 Viewing platform / terrace
- 7 Staff office
- 8 Boardroom
- 9 Artist in Residence
- 10 Auditorium
- 11 Amenities
- 12 Foyer
- 13 Vertical storage display
- 14 Reception & coat store
- 15 Vertical storage display
- 16 Void



Level 01
1:750

- 1 Large entry gallery function space
- 2 Temporary exhibition space
- 3 Gallery 02
- 4 Gallery 01
- 5 Vertical Storage Display
- 6 Gallery break
- 7 Storage
- 8 Catering kitchen
- 9 Amenities
- 10 Community art wall & piano recitals
- 11 Cafe & Bar
- 12 Foyer
- 13 Vertical Storage Display
- 14 Reception & Retail
- 15 Conservation
- 16 Views into Storage & Conservation
- 17 Void

