

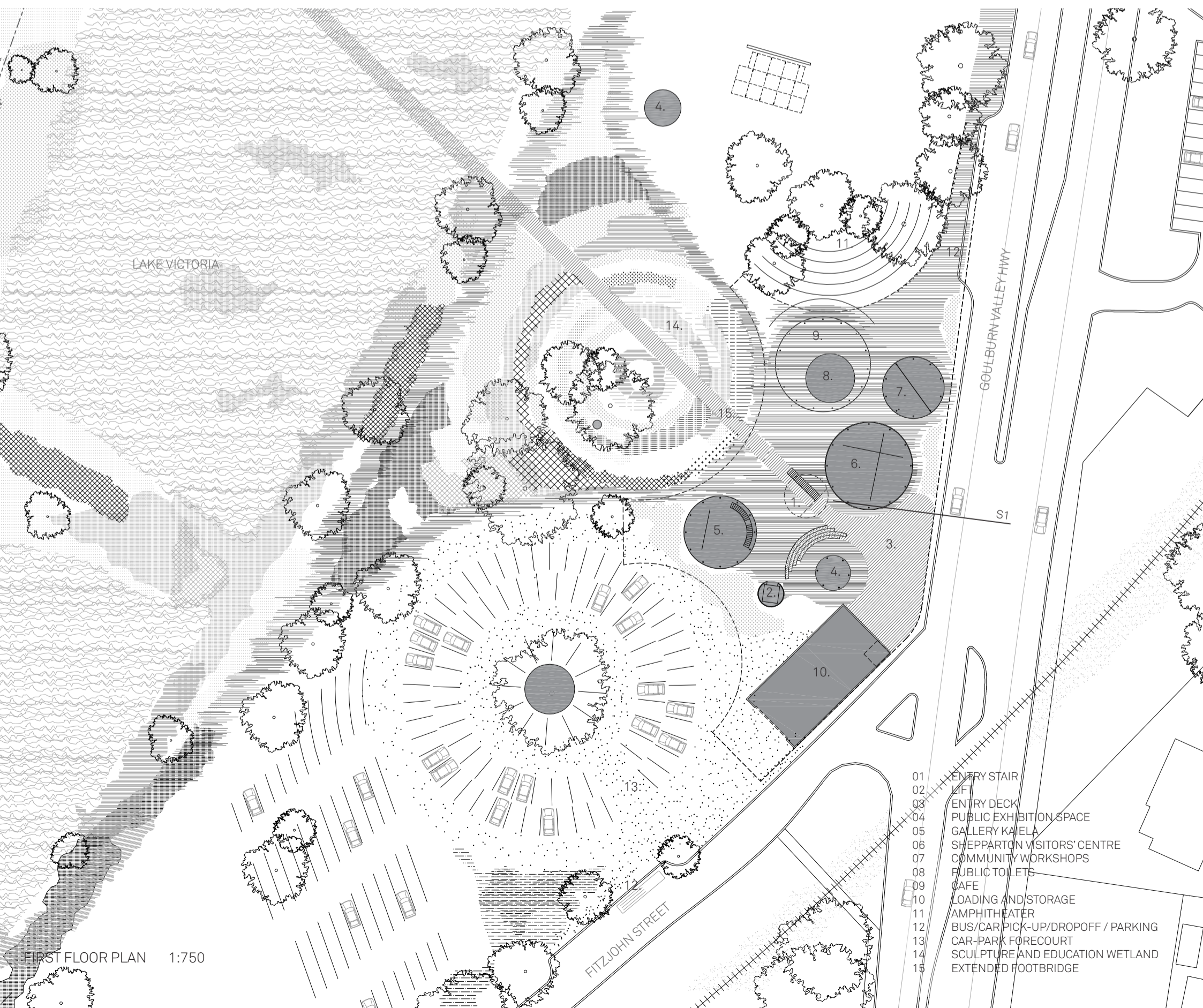
# SHEPPARTON ART MUSEUM



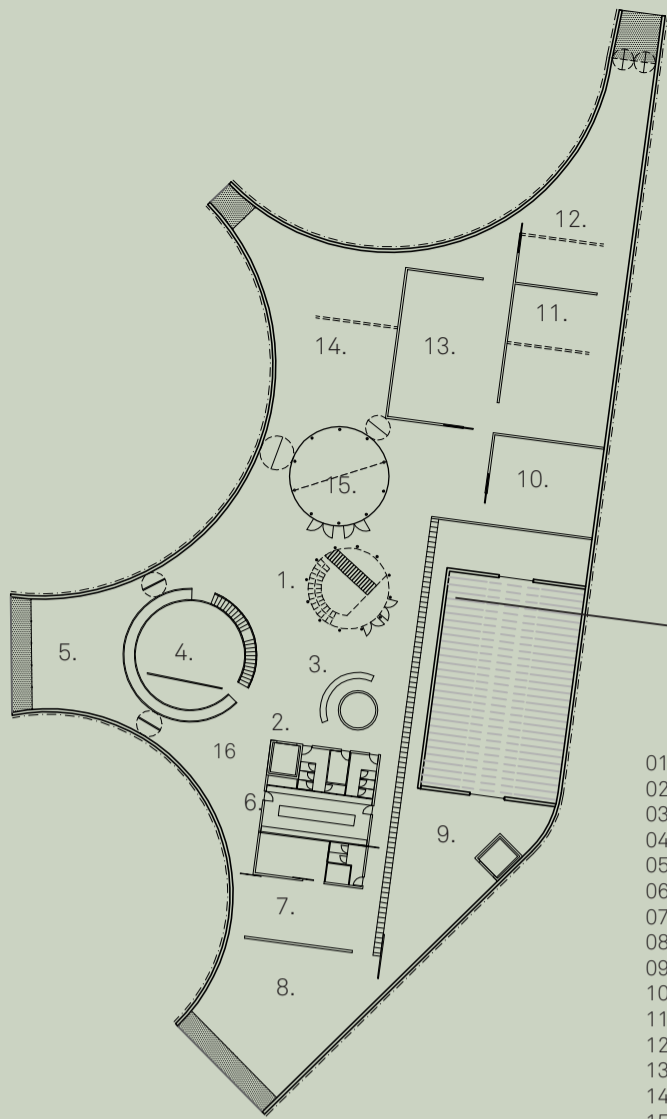
—KTA

VIEW TOWARDS SAM FROM VICTORIA PARK LAKE

The building form is less about icon making and more about public realm formation. The scalloped main volume establishes a series of defined outdoor areas and enhanced public realm for many different people and uses - recreation, cultural, education, events.

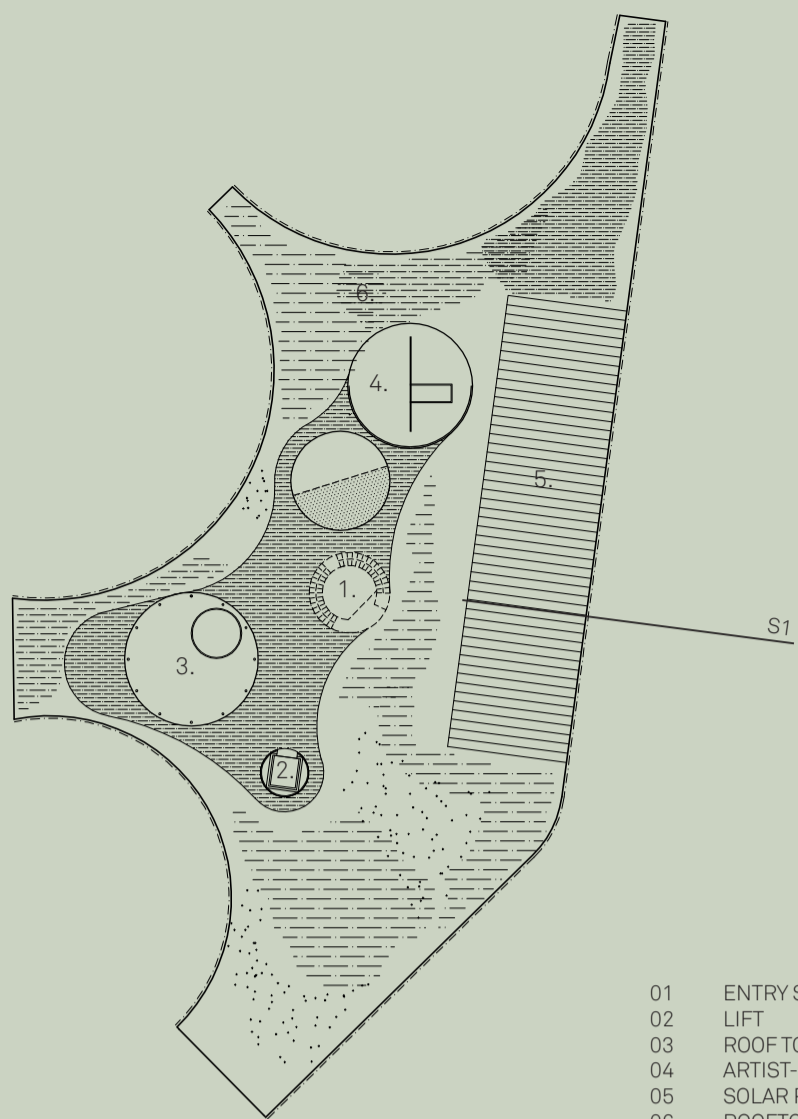






- 01 ENTRY STAIR
- 02 LIFT
- 03 RECEPTION / CLOAK
- 04 FRIENDS LOUNGE / MEETING
- 05 AUDITORIUM
- 06 TOILETS/ KITCHEN/ BOARDROOM
- 07 CONSERVATION AND PREPARATION
- 08 MUSEUM OFFICES
- 09 STORAGE
- 10 COMMUNITY GALLERY
- 11 GALLERY 1
- 12 GALLERY 2
- 13 TEMPORARY EXHIBITION
- 14 ENTRY GALLERY / FUNCTION SPACE
- 15 CHILDREN'S DISCOVERY
- 16 BREAKOUT/MEETING

FIRST FLOOR PLAN 1:750



- 01 ENTRY STAIR
- 02 LIFT
- 03 ROOF TOP BAR
- 04 ARTIST-IN-RESIDENCE
- 05 SOLAR PANELS
- 06 ROOFTOP PLANTING

ROOF PLAN 1:750



**SPREADING SAM - A SHELTERING CANOPY**  
 Our approach consolidates the bulk of SAM's program to the first floor to *spread* the building over a greater area to create a substantial protective canopy, a shaded high quality open space for all weather use



**GO WITH THE FLOW**  
 Rather than resist this landscape of flood and drought our approach is to go with the flow; extend the wetland ecology to SAM and build resilient buildings and landscapes that can handle a dynamic river system

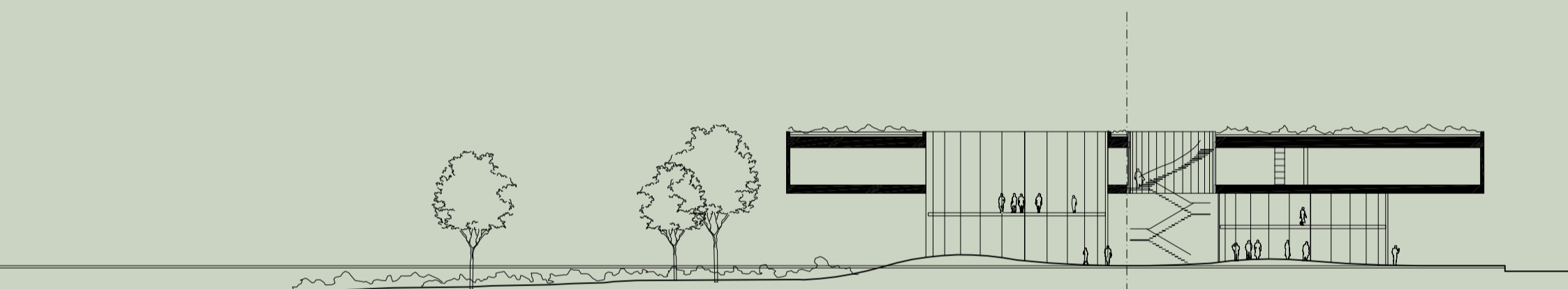




VIEW FROM GOULBURN VALLEY HWY THROUGH TO VICTORIA PARK LAKE AND FOOTBRIDGE



GALLERY BREAKOUT AREAS PROJECT OUT OVER THE WETLANDS AND FRAME VIEWS TO THE RIVER ENVIRONS



SECTION 1:500

A DEMOCRATIC GROUND OPEN TO ANYBODY, ANYTIME - FOR CULTURAL AND RECREATIONAL USE, PEDESTRIAN AND BIKE FLOW, DAY AND NIGHT



EXTENDED SITE PLAN 1:2500

SAM WILL FORM AN INTEGRAL PART OF THE BROADER FLOOD LANDSCAPE; AN EXTENSIVE ECOLOGICAL RIVER SYSTEM THAT IS BOUNDLESS AND DYNAMIC