

# Katandra West Community Plan



Katandra West is a proud and welcoming community that strives to provide a range of sustainable activities, facilities and services for our local residents both within the township and on surrounding farms.



# Acknowledgements

The following people are gratefully acknowledged for the time, energy, enthusiasm and knowledge that they have contributed to the development of the Katandra West Community Plan:

- Jillian Beecroft
- Belinda Collins
- Aaron Howells
- Leanne Ireland
- Trudie Smith
- Paul Verbeek
- David Whelan

Also, invaluable support was received from Michelle Patterson, Anna Janson, other Council staff and Councillors of the Greater Shepparton City Council. Thank you too, to all the individuals who contributed in some way to the consultation process through key stakeholder interviews, surveys or one-on-one interviews.



## Disclaimer

The information contained in this report is intended for the specific use of the within named party to which it is addressed ("the communityvibe client") only. All recommendations by communityvibe are based on information provided by or on behalf of the communityvibe client and communityvibe has relied on such information being correct at the time this report is prepared.

communityvibe shall take no responsibility for any loss or damage caused to the communityvibe client or to any third party whether direct or consequential as a result of or in any way arising from any unauthorised use of this report or any recommendations contained within.

**Report Date:** October 2012

## Prepared By:

Wendy Holland

Director

## communityvibe

5 Allison St, Bendigo, Vic, 3550

Ph: 03 5443 3559; Mob: 0438 433 555

E: [wendy@communityvibe.com.au](mailto:wendy@communityvibe.com.au)

W: [www.communityvibe.com.au](http://www.communityvibe.com.au)

# Table of Contents

Executive Summary.....	1
What is Our Community Plan?.....	2
Community Views .....	4
Who Are We? .....	6
Environment, Sustainability and Township Appearance .....	9
Health and Wellbeing .....	11
Community Services and Organisations .....	12
Heritage, Arts, Culture and Tourism .....	15
Transport and Movement.....	17
Business, Retail, Farming and Development .....	20
Sport, Recreation and Entertainment.....	22
Education, Childcare and Training .....	25
Action Plan .....	27
Implementation Plan .....	35

Please also refer to the accompanying Appendix for further details of the literature review, community consultation outcomes and the process used to priorities actions.



# Executive Summary

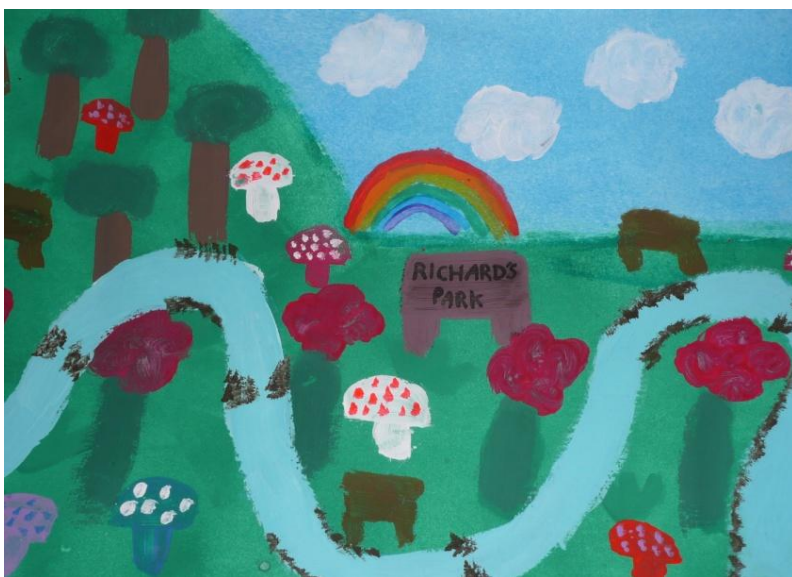
As residents of Katandra West, we are proud of our town and all of its attributes. We particularly like:

- the strong community spirit and the friendliness of the people;
- the fact that everyone knows everyone and that people are willing to help each other out in times of need;
- the variety of clubs and organisations available in our town;
- the quiet small town atmosphere and ease of getting around the town;
- the range and quality of sporting opportunities and facilities available in our town
- our school, kindergarten and general store;
- our proximity to other towns.

Although we have many assets, without doubt, our greatest assets are our people. In order to retain all of the positive features of Katandra West and to improve on these features; there are several key priorities that we would like to work towards, in partnership with Greater Shepparton City Council and other relevant stakeholders. These priorities are as follows:



1. Construct a beginner / intermediate level Skate Park / BMX Park in Katandra West.
2. Construct a Community Centre at the Recreation Reserve to cater for birthday parties, weddings, funerals, conferences and training days.
3. Develop a new playground at the Recreation Reserve.
4. Develop additional events in Katandra West for people of all ages.
5. Encourage more businesses to establish themselves in town.
6. Extend the walking / cycling track around the Recreation Reserve to link to the township, including paths north of the CFA shed.
7. Conduct a promotional campaign to attract more people to live in Katandra West and to attend both the kindergarten and primary school.
8. Advocate for improved mobile phone reception in Katandra West.
9. Organise more activities for young people in Katandra West.
10. Improve storm water drainage in Katandra West to reduce potential for flooding of homes, the school and businesses.
11. Install a street light at the entrance of the Recreation Reserve and paint a white line down the middle of the road near the entrance to increase safety around the Reserve.
12. Locate a home for the Katandra West Historical Group's artefacts and photo display.
13. Produce an annual community directory to promote clubs / organisations.
14. Advocate for improvements to the condition and maintenance of all roads, including minor roads in the Katandra West District.
15. Advocate for improvements to the condition of footpaths.
16. Improve street lighting throughout Katandra West.



## What is Our Community Plan?

Our community plan is a written document that identifies our vision for the future and the priorities we have identified to achieve this vision. It will guide us in the delivery of a range of projects and facilities over the next decade. Where we may require additional assistance for specific projects, we will use our plan to seek support and funding from a range of relevant organisations including Greater Shepparton City Council.

It must be noted, however, that the issues identified in our plan represent a 'Snapshot in Time'. It is imperative that our plan is reviewed annually so that new issues, that are not apparent at this point in time, can be identified and addressed through the plan. Our plan needs to be a living, flexible document that can adapt to the changing needs of the community.

Further, achievement of strategies in our plan is dependent upon strong community support; the community being able to sell our ideas effectively to funding bodies; and providing genuine evidence of need.

A Planning Group comprising of interested local residents was established to oversee and actively assist with the development of the Katandra West Community Plan in February 2012. This group was provided with support from officers from Greater Shepparton City Council. A consultant was appointed to help facilitate the community consultation component of the project and to prepare the final Plan.

The Katandra West Community Planning Group met twice in February. However, serious flooding in Katandra West and other areas of Greater Shepparton at the end of February meant that a hold had to be placed on

the project so that local residents could have time to deal with the impact of flooding on their lives and businesses. The project resumed again in late May and community consultation events were held in July and August.

In order to develop a community plan such as ours, it is essential to engage with the whole community in the development process and to make sure that all groups, including those who are not usually involved in planning (such as young people), have an opportunity to be involved in the identification of issues and potential solutions. To hear the needs of our community, we undertook:

- A review of previous literature
- A demographic analysis
- Key stakeholder interviews
- Community surveys
- Community workshops

We then analysed all of this information to ascertain the key priorities of our community.

For the purpose of our community plan, Katandra West refers to the township as well as the district surrounding it, i.e. the area bounded by:

- Katamatite – Shepparton Rd (western boundary – down to Lemnos North Rd)
- Cosgrove Rd / Katandra Rd (eastern boundary)
- Tungamah Boundary Rd / Congupna East Rd (southern boundary)
- Murungi Rd (northern boundary).





## Community Views

Extensive community consultation was undertaken as part of the development of our plan to ensure that all residents had an opportunity to have their say in the future of our town. **284** individuals contributed their ideas and thoughts to our Community Plan, which represents 38% of the population (although there may have been some doubling up of figures if people chose to take part in more than one consultative activity). The community consultation processes used included:

### Literature Review

A total of eight (**8**) relevant documents and plans, primarily from Greater Shepparton City Council were reviewed to develop a better understanding of existing strategies and policies that need to be considered as part of the community planning process and may impact on future developments. These six documents included:

- Greater Shepparton Council Plan and Strategic Resource Plan (2009-2013)
- Katandra West Urban Design Framework (2003)
- Greater Shepparton Housing Strategy (2011)
- Early Years Service and Future Demand Analysis: Draft Report (2011)
- Katandra West Recreation Reserve Master Plan (2006)
- Draft Proposed Katandra West Twelve Month Action Plan (2005)
- Shepparton 2030
- A Future With Less Water Report (2012)



### Community Surveys

Community surveys were mailed out to each household. Surveys were also used as part of one on one interviews conducted in front of the general store and at a football match. The total number of completed surveys from household surveys and interviews was **106**.

### Children’s Art Exhibition and Free Community BBQ

Children at Katandra West Kindergarten and Katandra West Primary School were asked to develop a piece of art depicting what their vision of Katandra West in the future is. A total of 107 works of art were obtained – **71** from the primary school (contributed by approximately 60 children) and 36 from the kindergarten (contributed by approximately 16 children). Each work of art from the primary school was analysed to draw out the key issues. Local residents were also invited to attend the Art Exhibition to view the art work, examine key issues identified through community surveys and to vote on their priorities. **145** people attended the art exhibition.

### Key Stakeholder Meetings

Key stakeholder meetings were held with **33** individuals representing 23 community-based clubs and organisations.



## Who Are We?



## Where We Are

Katandra West is situated 26km north east of Shepparton and 216 km north east of Melbourne, surrounded by farmland.

## Our People

Based on the 2011 Australian Bureau of Statistics Census, Katandra West (State Suburb) has a population of **747**; 50.3% of whom are males and 49.7% of whom are females. The largest age groupings are 10-14 year olds and 45-49 year olds, with the median age of residents being 40 years of age.

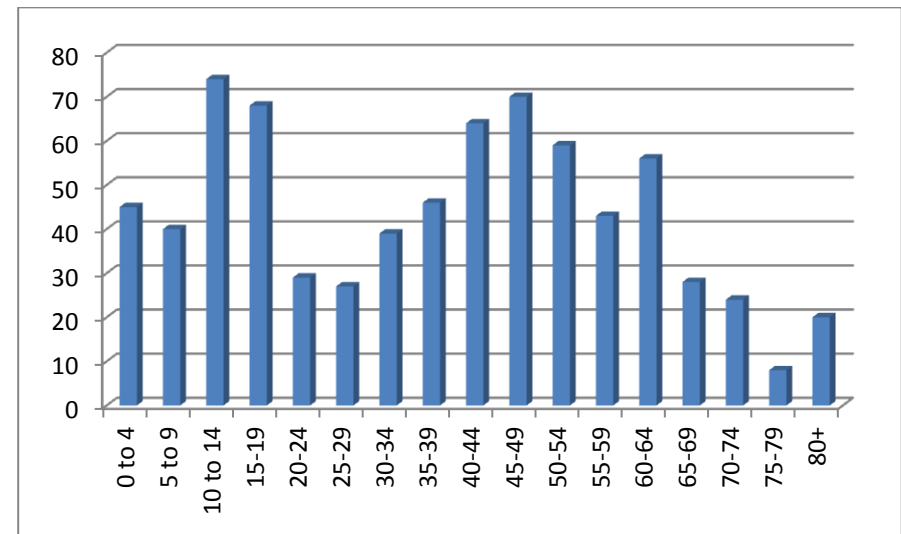


Figure 1: Age distribution of Katandra West Residents (Source: 2011 Census)

In 2011, we had approximately 16 children from Katandra West (state suburb) attending pre-school and 164 attending primary or secondary school (not necessarily in Katandra West).

### **Our Households**

The most common form of household composition in Katandra West is a family household (79% compared with 72% for Australia), and of family households, the most common form is a couple living together with children at home (52% compared with Australia at 45%). The average number of children per household is 1.8 and the average household size is 2.7 people per house.

### **Our Language and Culture**

Approximately 92.1% of our residents were born in Australia, compared with the national figure of 69.8%; and 2.0% of us are of indigenous descent, compared with 2.5% for Australia. Countries of birth for those not born in Australia include New Zealand, Netherlands, United Kingdom, Germany, Greece and Malaysia. English is the only language spoken at home by 96.4% of us. Italian and Dutch are the only other languages spoken at home by our residents, according to the 2011 Census.

### **Our Voluntary Work in the Community**

167 people over 15 years of age (28.4%) in our community claimed that they undertook some form of voluntary works for an organisation or group in 2010/11, compared with 17.8% of Australian residents. The age groups which most thoroughly embraced volunteer work included 45-54 year olds, followed by 35-44 year olds.



## Our Income

The median household income on a weekly basis is around \$1,064 per week and the median family income is \$1,219. Individuals earn a median income of \$488 per week. Of the 300 private dwellings in Katandra West, 33.2% are fully owned; 48.8% are in the process of being purchased; and 12.9% are being rented. The median mortgage repayment is around \$1,300 per month, and the median weekly rent is approximately \$200. 97.0% of households are connected to the internet either via broadband or dial-up, compared with only 59% for Australia.

## Our Transport

The majority of homes have two motor vehicles (or an average of 2.3 motor vehicles per home). There is no public transport in Katandra West. Students attending secondary school in Shepparton utilise school buses. A high proportion of our workforce commutes into Shepparton for work, although exact figures are not known.

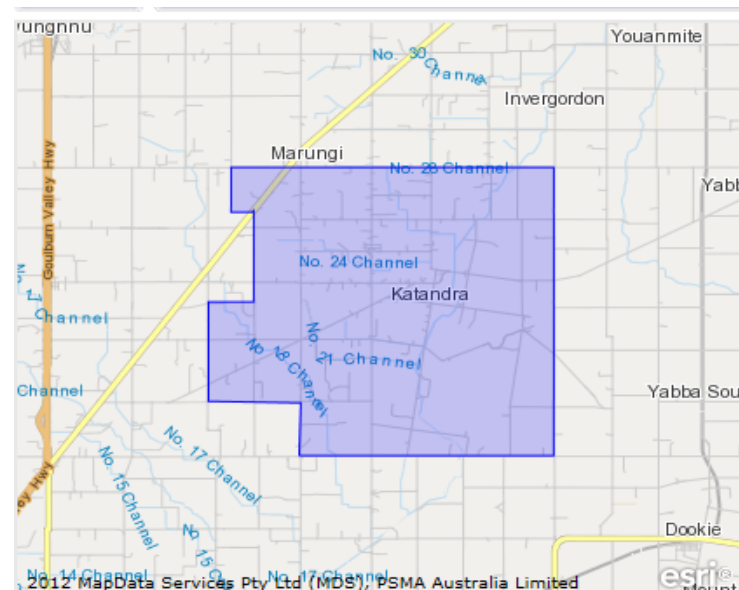
## Our Employment

In 2011, 381 of our residents 15 years of age or over (72.1%) were in the labour force, working either full time, part time or presently away from work. Our unemployment rate was 3.5%, compared with 5.6% for Australia. Of our residents who are over 15 years of age and in the workforce, primary industries of employment included: dairy cattle farming (12.4%); hospitals (6.8%); and sheep, beef cattle and grain farming (6.1%). Within these industries, the most common occupations included managers (23.7%); professionals (15.3%); and technicians and trades workers (15.0%). Compared to Australia as a whole there are more

people in Katandra West working as managers and professionals and less people working as technicians/ trade workers and labourers.

## Future Growth

Greater Shepparton is expected to grow at a rate of 1.17% over the next 19 years (between 2012 and 2031), however the Rural North East region, in which Katandra West is situated, is expected to grow at a very moderate rate of 0.05% per annum between 2012 and 2021. This represents a net gain of 20 people in the Rural North East region. The biggest losses are expected in the under 15 years of age bracket (-7.3%) and the biggest growth is expected in the number of people over 65 years of age (55.1%).



# Environment, Sustainability and Township Appearance

## Our Assets

Katandra West is surrounded by farming land. Although much of this land has been cleared over the years for farming practices, there are still areas, particularly along rural roads where expanses of native vegetation exist. A number of farmers have also planted trees on their farms to provide a windbreak and also to act as a shelter to stock and as a habitat to birds and wildlife.

Within the town itself, there is a small rose garden containing the war memorial adjacent to the hall and general store, used for passive recreational activities such as picnics and another triangular section of land in the roadway between the tennis courts and the general store which has been planted with trees and lawn.

The Katandra West Landcare Group, although only a very small volunteer based organisation, has been active in terms of advocating for the protection of remnant vegetation in areas such as Inverness Road and also in the creation of a native indigenous garden at the Katandra West Primary School.

## Our Challenges

**Township Entrances** – residents feel that in order to create a sense of arrival, it is important to provide welcoming and highly visible signage at the



entrance ways to Katandra West, as well as attractive vegetation at the entrances and throughout the town.

**Township Appearance** – residents have expressed concern about the poor impression that poorly maintained housing and front yards in the main street creates for visitors.

**Drainage** – the need to continue to improve storm water drainage in Katandra West is important to ensure the risk of flooding to businesses, the school and private properties is minimised in the future. However, much of the damage from the February 2012 flooding occurred not from urban water, but rather from rural water that entered the urban system.

**Lighting** – poor lighting or lack of lighting in parts of Katandra West has been identified as a safety issue by a number of residents. One area in urgent need of lighting is the entrance to the Recreation Reserve.

**Biodiversity** – a number of local residents wish to maintain and preserve native indigenous vegetation in the Katandra West district to ensure that such species remain part of our landscape, do not become extinct and so that habitats are preserved for native birds and wildlife.

### Our Future Directions

- *Continue to improve storm water drainage in the town\*. (H)*
- *Install a street light at the main entrance to the Recreation Reserve. (H)*
- *Improve street lighting throughout the town (H-M)*
- *Plant more trees & establish more garden beds in town. (M)*
- *Install new town entrance signage. (M)*
- *Develop consistent tree planting plan for each street. (M)*
- *Improve the appearance of housing in the main street. (L)*



*\*Please refer to Katandra Flood Emergency Plan for further details.*



## Health and Wellbeing

### Our Assets

Residents of Katandra West are required to travel into Shepparton for all health and wellbeing services, other than the Maternal and Child Health Service and other visiting services that they may be able to access through Greater Shepparton City Council Home and Community Care (HACC) such as home help. For more specialist medical services, residents travel to Melbourne.

### Our Challenges

Access to Health Services - one of the key factors that would encourage older adults to remain living in Katandra West would be the ability to easily access health services, without having to travel into Shepparton.

### Our Future Directions

- Advocate for the establishment of mobile health services (including a doctor) which will regularly visit Katandra West. (L)

# Community Services and Organisations

## Our Assets

Despite its small size, Katandra West has an array of community organisations and associations which provide opportunities for resident to become involved in the community and to develop local networks. These community organisations include:

- Katandra West Scouts / Guides
- Katandra West CWA
- Katandra West Red Cross
- Katandra West United Dairy Farmers of Victoria
- Katandra West Fire Brigade
- Katandra West Catholic Church
- Katandra West Anglican Church
- Katandra West Uniting Church
- Katandra West Historical Society
- Katandra West Landcare Group
- Inver-Katandra Community Church
- Katandra Community Centre Community Reference Group and Planning Group
- Katandra West Progress Team
- The Katandra Informer (newsletter)







## Our Challenges

**Hall Maintenance** – the existing hall, which has been constructed in three separate parts, is in need of maintenance to ensure that it is able to continue to function effectively in the future. However, limited funds are available for this purpose, particularly given that a new community centre has been proposed. A decision may need to be made in the near future by the community about the future of the hall and what level of maintenance it will receive in the future.

**Desire for a Multi Purpose Community Hub** – a committee has been formed to plan and fundraise for a new multi-purpose community centre to be located at the Recreation Reserve. Such a facility is likely to cost in excess of \$1m, and a considerable amount of local fundraising is expected to supplement any external grants that may be received. Ongoing support from the community and from Greater Shepparton City Council is critical in order for this project to progress.

**Low Attendance at Church Services** – attendances at the three churches in Katandra West have been declining in recent years. Services are becoming less frequent also. There may come a time in the near future where church management decrees that services at one or more of the three churches in Katandra West are no longer viable

**Attracting Volunteers** – many of the people who volunteer at community based organisations are ageing and are planning on retiring from their volunteer roles over the next few years. There does not appear to be a ready team of younger volunteers waiting in the wings to take over these important roles. Without such involvement, many organisations simply may not continue to operate.

**Sustaining Clubs and Organisations** – a number of clubs and organisations in Katandra West are struggling for numbers and fear that their particular organisation may cease to exist unless new members join in the very near future.

## Our Future Directions

- *Develop a Community Centre at the Recreation Reserve. (H)*
- *Produce an annual community directory to promote clubs / organisations available as a hard copy and as an online version. (H)*
- Develop a website for Katandra West and identify volunteers to regularly update this site (M)
- Organise a volunteer recruitment program clearly articulating the opportunities available in the community and the benefits of being involved and link this with the Greater Shepparton City Council's Volunteer Program. (M)
- Upgrade the existing Katandra West Hall, subject to discussions about its future use (M)
- Encourage churches to meet to discuss possible formation of a united church should congregation levels continue to decline (L)
- Encourage more involvement by residents in local activities through active promotion of activities via The Informer, notice boards, a website, school newsletters and word of mouth. (L)
- Develop a public space in town where people can access computers, potentially linked to the proposed community centre, the hall, the primary school or the general store. (L)
- Establish a mail delivery service for people living in the town or install post office boxes. (L)





## Heritage, Arts, Culture and Tourism

### Our Assets

It is believed that the Katandra West area was inhabited by the Yorta Yorta Nation people before being settled by squatters in the 1840's. Further population growth occurred following the Soldiers' Settlement which commenced in 1919 and the Closer Settlement which commenced in 1926. A mural on the side of the Katandra West Hall depicts the creation of irrigation channels in 1926, an action that significantly changed the landscape and the type of farming able to be conducted in the region.

Katandra West features a number of buildings and residences from the early part of the 20<sup>th</sup> century, namely the Katandra West Hall and the old school hall. The Katandra West Historical Group continues to work hard to preserve the history of the community through its website and publishing of a local history book.

In relation to the arts, there is mural painted on the side of the Katandra West Hall and two painted cow sculptures on temporary loan from Greater Shepparton City Council near the general store. A Christmas Carols event is held each year in Katandra West. There are no significant tourist attractions in the immediate area at present.



## Our Challenges

**Lack of Events and Attractions in Katandra West** – there are very few events held in Katandra West at present. Through the community planning consultation processes, residents articulated the need for more events which will not only benefit local people but may also attract others from further afield, including: farmer’s market; craft market; movie nights in the hall or at the Recreation Reserve; discos for young people; trivia nights; country and western nights; circuses; etc.

**Lack of Permanent Venue for Historical Association** – the Katandra West Historical Group is currently storing the community’s valuable artifacts and photographs in a farmhouse near the town. In order to best preserve this material and to allow the group to display its photographs and memorabilia, a new home, centrally located in Katandra West is important.

## Our Future Directions

- *Increase the number of attractions / events in town by forming a sub-committee of interested residents to work on these concepts and by liaising with Greater Shepparton City Council’s Major Events and Promotions Unit. (H)*
- *Locate a home for the Katandra West Historical Group artifacts and photo display. (H)*





# Transport and Movement

## Our Assets

Katandra West has a network of mostly sealed urban roads within the town, with the exception of several streets, and a network of rural roads surrounding the town. Within the town there is a 40km per hour zone at all times near the school. There are footpaths in some streets and an off-road walking / cycling path around the Recreation Reserve.

There are no public transport options available for residents. Greater Shepparton City Council's Home and Community Care Program can provide a car and driver to assist with some functions for its clients and there are other transport options available such as the Red Cross Car.

School buses are available to transport secondary school students to Shepparton by bus.

## Our Challenges

**Providing a Linked Walking / Cycling Network** – although there is already an off road walking / cycling path around the perimeter of the Recreation Reserve, this path could be vastly improved by linking it to key locations within the town such as the general store, the school, the guide hall, the kindergarten and to areas north of the CFA shed.

**Improving Safety of Roads for Vehicles and Pedestrians** – concern has been raised by residents regarding the poor condition of some roads within and leading to town. Specific mention has been made of the entrance to the Recreation Reserve as a potential accident spot due to the bend of the road, no line marking down the centre of the road and lack of street lighting. The Katandra West Urban Design Framework (2003) identified the need to develop a t-junction at Queen St and Hickey St to improve pedestrian crossings as well as designating car parking areas in the town centre (these have both been achieved). Greater Shepparton City Council is responsible for inspecting and maintaining the local road network, as per the schedule outlined in its Road Management Plan. VicRoads is responsible for maintaining arterial roads such as Shepparton-Katamatite Road as per its management plan.

**Improving Safety of Footpaths** – some streets in Katandra West only have footpaths on one side of the road, whereas some streets have no footpaths at all. A lack of footpaths can discourage physical activity and all the benefits associated with being active; can encourage greater car use and increased carbon emissions; and can result in people walking on the road, thereby creating a risk to themselves and other road users. Concern has been raised about the condition of some of the existing footpaths. Greater Shepparton City Council is responsible for inspecting and maintaining the footpath network, as per the schedule outlined in its Road Management Plan.

**Improving Transport Options to Shepparton** – there is some support for improved transport options to Shepparton, although this issue needs to be explored in further detail to determine specific needs and viability. There is however a clear need to develop some form of shelter for students waiting to board school buses in the morning.





## Our Future Directions

- *Extend the walking/cycling around the Recreation Reserve to link to the township, incorporating the general store, the school, the guide hall, the kindergarten and to areas north of the CFA shed. (H)*
- *Paint a white line down the middle of the road near the Recreation Reserve to improve safety for all vehicles, particularly during periods of fog. (H)*
- *Improve the condition and maintenance of all roads, including minor roads. (H-M)*
- *Improve condition of footpaths and construct new footpaths where required. (H-M)*
- *Improve transport options to Shepparton by working in partnership with Greater Shepparton City Council's Transport Connections Program. (M)*
- *Construct a bus shelter in the town centre to provide protection for secondary school students from the weather. (M)*

# Business, Retail, Farming and Development

## Our Assets

Due its small size, there are currently only three major businesses located in Katandra West township—a general store, a rural supplies business and a school bus service. In the outlying areas, there are numerous farms, predominantly dairy, sheep, beef cattle and grain, and on-farm businesses to support the rural community.

## Our Challenges

**Attracting New Businesses and Residents** – the majority of residents recognise that some moderate growth is important for the long term sustainability of Katandra West. Continued growth (of businesses and population) is dependent upon a range of factors including access to appropriate type of land; access to services; a mix of housing styles and costs; appropriate community infrastructure such as schools; and a balance that ensures the impact of businesses on residential areas is limited. In order for a business to be viable, it must have an adequate market to sell its products or services to. If prospective business owners do not identify a sufficient market in Katandra West, it may be difficult to attract new businesses.

The lack of sewerage in Katandra West impacts on the size of house blocks available for development (i.e. blocks must be 4,000 square metres or an acre in size). As Katandra West is an ageing community, such house blocks, and the maintenance requirements that come with them, are not







always considered ideal. There is much greater demand for smaller blocks and low maintenance units to encourage older adults to remain in the area. Similarly, the planning regulations around rural property sizes in the farming zone, i.e. blocks need to be at least 40 hectares (almost 100 acres), do not allow subdivisions to occur. This reduces the opportunity to retain some retiring farmers in the community who still wish to live on a small block of land near Katandra West, but without the responsibilities of maintaining an entire farm.

**Telecommunications** - Poor mobile phone reception and internet access may have an impact on whether or not people stay or choose to move to Katandra West to live or to start a business. The National Broadband Network is expected to be rolled out in Katandra West by June 2013.

### **Our Future Directions**

- *Conduct a promotional campaign to attract more people to live in Katandra West (and to attend both the kindergarten and primary school). (H)*
- *Encourage more businesses to establish themselves in Katandra West. (H)*
- *Improve mobile phone coverage / reception. (H)*
- *Investigate potential to install sewerage in Katandra West to allow for smaller house blocks. (M)*
- *Open up more land for housing development. (M)*
- *Keep water in the area for irrigation and to encourage more farming. (M)*
- *Meet with water authorities to discuss potential to increase water pressure in town. (M)*
- *Construct a new toilet and ashes wall at the cemetery. (L)*

# Sport, Recreation and Entertainment

## Our Assets

Katandra West is endowed with a wide range of quality sport and recreation infrastructure located at the Recreation Reserve. This infrastructure includes:

- 1 sports oval with sports pavilion, Wally Down Pavilion, training lights, grandstand, scoreboard and time keeper's box
- 2 netball courts with a synthetic surface, lighting and a small pavilion
- 4 synthetic tennis courts with competition standard lighting and a small pavilion
- 1 synthetic bowling green with competition standard lights and a small pavilion
- Playground

A master plan was prepared in 2006 to guide future developments and works at the Katandra West Recreation Reserve. Key works proposed through this plan included:

- Development of a shared, multi-purpose community social facility with change rooms, meeting room and catering facilities.
- Need to replace netball and tennis courts in 5 years time.
- Relocation of cricket practice nets (completed).





- Installation of a drainage system and retardation basin to manage flood water.
- Removal of the CFA shed, Wally Down Pavilion, grandstand, scoreboard, tennis pavilion and netball pavilion.
- Relocation of the war memorial, BBQ and public toilets.
- Potential need to relocate carriage club due to traffic management issues at the Reserve.
- Potential to remove some, or all, of the existing hall

In terms of non-organised and passive recreation and entertainment opportunities, there is a playground at the Recreation Reserve as well as a walking / cycling trail around its perimeter. There are no formalised non-sporting activities available in town at present.

## Our Challenges

**Providing a Range of Recreational Opportunities for Young People** – residents believe that organised team sports are relatively well catered for in Katandra West. However, they believe that there is a gap in the provision of unstructured or alternative recreational activities such as skate boarding, BMX riding, dancing, motocross and a place where young people can meet others and take part in a range of different activities.

**Maintaining and Improving Existing Infrastructure** – much of the sporting infrastructure at the Katandra West Recreation Reserve was constructed many years ago, mostly by a band of dedicated local volunteers. Over time, many of these assets have degraded and are now in need of replacement. Alternatively, these assets may no longer meet standards or guidelines of their particular sport and therefore need to be modified.

## Our Future Directions

- *Construct a skate park / BMX park in a central location in Katandra West. (H)*
- *Upgrade / develop a new playground at the Recreation Reserve, including construction of a barrier to prevent children from running onto internal roadways. (H)*
- *Construct new netball / tennis courts and develop club / change rooms as per the master plan. (H)*
- *Develop activities and a place for young people to hang out. (H)*
- Reinvigorate meetings at the Recreation Reserve with all user groups involved. (M)
- Develop a motocross / motorbike track. (M)
- Construct a grandstand / undercover seating next to the netball courts as per the master plan. (M)
- Provide dance classes for young people in town, e.g. hip hop and jazz. (M)
- Construct a basketball court – potentially a half court for informal play. (M)
- Upgrade grandstand at Recreation Reserve. (L)





## Education, Childcare and Training

### Our Assets

Katandra West Early Childhood Centre provides a three and four year old kindergarten program, occasional care and a maternal and child health service. The Katandra West Primary School provides education for young people from prep to grade six and also operates a playgroup at the school each Friday morning. Once a young person is eligible to attend secondary school, he or she is required to attend school in Shepparton (unless being home-schooled). There are no other training opportunities available in Katandra West at present.

### Our Challenges

**Retaining Viability of the Kindergarten and Primary School** – a number of local families choose to use childcare, kindergartens and schools in Shepparton as opposed to Katandra West as it more conveniently fits around their work in Shepparton or is more accessible / available. This action, although effective for a number of families from a time and convenience aspect, impacts on local enrolments and the long term viability of early children's services and may also limit the creation of social networks within the town.

**Providing Viable Child Care Options** – due to limited numbers, the after school program which previously existed in Katandra West, was deemed

unviable. Similarly, the processes that need to be addressed prior to becoming a family day care worker, is too onerous for some people, despite the fact that there is a demand in Katandra West at present for after kindergarten and after school care. Occasional Care is also limited in terms of how frequently local people can access the service. At present there is a cap on the number of young people who can access the service (15) and restrictions on age groups. Families can only access this service on a fortnightly basis.

## Our Future Directions

- *Attract more children to the kindergarten and the school through a township settlement promotional campaign. (H)*
- Establish a garden program and animal farm yard at the school as a tool to create a greater appreciation of healthy living and how to care for animals, but also as an attraction to increase enrolments. (M)
- Explore opportunities to reinstate before and after school / kinder care. (M)
- Explore potential to increase child care opportunities in Katandra West through programs such as Family Day Care by holding information sessions in town. (M)
- Explore opportunities to purchase land next to Kindergarten to expand the outdoor play area. (M)
- Explore opportunities to run more activities in the school with older adults as a means to create better linkages between older and younger residents. (L)



# Action Plan

The following Action Plan has been developed for Katandra West Community Planning Group (KWCPG) based on information contained within other relevant plans and from community consultations and key stakeholder interviews. It is assumed that Greater Shepparton City Council’s Community Planning unit will provide ongoing support and assistance to the Katandra West Community Planning Group in terms of advice on funding opportunities, connections with Council officers, etc.

The priorities in this Action Plan have been determined, based on degree of significance each issue has with local residents. The table contains high priorities, which ideally should be achieved within the next 0-5 years; and high-medium priorities, which should ideally be achieved within 6-10 years. However, it is important to note that as external factors change or new opportunities arise, these priorities may change slightly. There is also a list of medium and low priorities identified throughout the document under specific subject headings. Depending on circumstances, some of these priorities may become high or high-medium priorities; hence should not be discounted.

***It must be noted that the actions contained within this plan are a shared responsibility between the community and other key stakeholders such as Greater Shepparton City Council. Many of these actions will require some research and fundraising by the local community.***

NO	STRATEGY	ACTIONS	PARTNERS	RESOURCES	PRIORITY
1	<b>Construct a beginner / intermediate level Skate Park / BMX Park in Katandra West</b>	<ul style="list-style-type: none"> <li>• KWCPG to provide ongoing support to young people in their endeavour to develop and fundraise for a skate park in Katandra West.</li> <li>• KWCPG to assist young people to identify a suitable parcel of land (e.g. in the Recreation Reserve) for the facility.</li> <li>• KWCPG to facilitate a meeting with Greater Shepparton City Council’s Recreation and Parks unit and local young people to discuss</li> </ul>	<ul style="list-style-type: none"> <li>• Greater Shepparton City Council’s Recreation and Parks unit</li> <li>• Katandra West Primary School</li> <li>• Local businesses</li> </ul>	<ul style="list-style-type: none"> <li>• Estimated to cost around \$80K.</li> <li>• Some local in-kind and cash contributions from the community</li> <li>• Some funding</li> </ul>	HIGH

NO	STRATEGY	ACTIONS	PARTNERS	RESOURCES	PRIORITY
.		the development of a skate park / BMX park in Katandra West township and the actions required to bring this project to fruition.		from Greater Shepparton City Council <ul style="list-style-type: none"> <li>External State Government grants</li> </ul>	
2	<b>Construct a Community Centre at the Recreation Reserve to cater for birthday parties, weddings, funerals, conferences and training days.</b>	<ul style="list-style-type: none"> <li>KWCPG to continue to support the Community Centre Planning Committee in its endeavour to raise and attract sufficient funds to develop a new community centre at the Recreation Reserve.</li> <li>KWCPG in partnership with the Community Centre Planning Committee to initiate regular meetings / updates with Greater Shepparton City Council's Recreation and Parks unit and any other key stakeholders to further advance the development of the Community Centre.</li> <li>KWCPG to meet with Greater Shepparton's Environmental Health unit to identify septic requirements of this facility prior to commencing any works.</li> </ul>	<ul style="list-style-type: none"> <li>Katandra West Community Centre Planning Group</li> <li>Greater Shepparton City Council's Recreation and Parks unit</li> <li>Greater Shepparton City Council's Environmental Health unit</li> <li>Department of Planning and Community Development</li> <li>Regional Development Victoria</li> </ul>	<ul style="list-style-type: none"> <li>Some local in-kind and cash contributions from the community</li> <li>Some funding from Greater Shepparton City Council</li> <li>External State Government grants</li> </ul>	HIGH
3	<b>Develop a new playground at the</b>	<ul style="list-style-type: none"> <li>KWCPG to initiate discussions with Greater Shepparton City Parks and Recreation units</li> </ul>	<ul style="list-style-type: none"> <li>Katandra West Recreation Reserve</li> </ul>	\$40K to be sought through external	HIGH



NO	STRATEGY	ACTIONS	PARTNERS	RESOURCES	PRIORITY
.	<b>Recreation Reserve.</b>	<p>to ensure that they are aware of the demand in Katandra West to develop a new playground at the Recreation Reserve and to identify a suitable location that is consistent with the Recreation Reserve Master Plan.</p> <ul style="list-style-type: none"> <li>• KWCPG to consult with children and parents at the primary school and the kindergarten to develop plans for a new playground.</li> <li>• KWCPG to seek funding to develop the playground.</li> </ul>	<p>Committee of Management</p> <ul style="list-style-type: none"> <li>• Katandra West Primary School</li> <li>• Katandra West Kindergarten</li> <li>• Greater Shepparton City Council's Parks and Recreation unit</li> </ul>	<p>grants plus some in-kind / financial contributions from Recreation Reserve user groups.</p>	
4	<b>Develop additional events in Katandra West for people of all ages</b>	<ul style="list-style-type: none"> <li>• KWCPG to initiate a meeting with Greater Shepparton's Major Events and Promotions unit to seek assistance to operate or attract additional events to Katandra West.</li> <li>• KWCPG to develop a sub-committee to plan events such as a movie night or a farmer's market in the township.</li> </ul>	<ul style="list-style-type: none"> <li>• Greater Shepparton City Council's Major Events and Promotions unit</li> <li>• Greater Shepparton's Summer in the Parks Program</li> </ul>	<p>Committee time.</p> <p>Some funds to promote events.</p>	HIGH
5	<b>Encourage the establishment of more businesses in town.</b>	<ul style="list-style-type: none"> <li>• KWCPG to work in partnership with Greater Shepparton City Council's Investment Attraction unit to develop a kit to promote the positive aspects of operating a business in Katandra West and to identify any potential businesses willing to relocate or start up in Katandra West.</li> </ul>	<ul style="list-style-type: none"> <li>• Greater Shepparton City Council's Investment Attraction unit</li> <li>Potential new businesses</li> </ul>	<p>Committee time.</p> <p>KWCPG to source internal and external funds to develop the promotional kit.</p>	HIGH
6	<b>Extend the walking / cycling track around</b>	<ul style="list-style-type: none"> <li>• KWCPG to identify a route for a walking / cycling trail from the Recreation Reserve to</li> </ul>	<ul style="list-style-type: none"> <li>• Greater Shepparton City</li> </ul>	<p>Committee time.</p>	HIGH

NO	STRATEGY	ACTIONS	PARTNERS	RESOURCES	PRIORITY
.	<b>the Recreation Reserve to link to the township.</b>	<p>key locations in the community including the general store, the primary school, the kindergarten, the guide hall and areas north of the CFA shed.</p> <ul style="list-style-type: none"> <li>• KWCPG to initiate discussions with Greater Shepparton's Projects, Works and Recreation and Parks units to seek support and resources to develop the new section of walking / cycling trail.</li> <li>• Consider working in partnership with the Katandra West Historical Group and the Katandra West Landcare Group to provide interpretive signage along the trail relating to early settler history and flora.</li> <li>• KWCPG to consider development of a Friends of Katandra West Trails Group to help with basic maintenance of the trail.</li> </ul>	<p>Council's Projects, Works and Recreation and Parks units</p> <ul style="list-style-type: none"> <li>• Katandra West Historical Group</li> <li>• Katandra West Landcare Group</li> </ul>	<p>KWCPG to source internal and external funds to develop the trail and the interpretive signage.</p>	
7	<b>Conduct a promotional campaign to attract more people to live in Katandra West and to attend both the kindergarten and primary school.</b>	<ul style="list-style-type: none"> <li>• KWCPG to develop a kit in partnership with Greater Shepparton City Council's Investment Attraction and Children and Youth units to promote the benefits of living in Katandra West including its proximity to other towns for work and its range of programs, services and facilities (including the kindergarten and primary school).</li> <li>• KWCPG to investigate the latest technology in relation to more compact septic systems that may be suitable for smaller blocks and may be approved by Greater Shepparton City Council in the future.</li> </ul>	<ul style="list-style-type: none"> <li>• Greater Shepparton City Council's Investment Attraction and Children and Youth units.</li> <li>• Real estate agencies based in Shepparton.</li> <li>• Developers.</li> </ul>	<p>KWCPG to source internal and external funds to develop the kit.</p>	HIGH

NO	STRATEGY	ACTIONS	PARTNERS	RESOURCES	PRIORITY
.		<ul style="list-style-type: none"> <li>• KWCPG to identify potential for a developer to construct a cluster of small units on one centrally located block of land suitable for older adults, with a shared septic system.</li> </ul>			
8	<b>Advocate for improved mobile phone reception in Katandra West.</b>	<ul style="list-style-type: none"> <li>• KWCPG to liaise with Greater Shepparton City Council's Investment Attraction unit to advocate with relevant telecommunications companies to improve mobile phone reception in Katandra West and district.</li> </ul>	<ul style="list-style-type: none"> <li>• Greater Shepparton City Council's Investment Attraction unit.</li> <li>• Relevant telecommunication s companies.</li> </ul>	Committee time.	HIGH
9	<b>Organise more activities for young people in Katandra West.</b>	<ul style="list-style-type: none"> <li>• KWCPG to initiate discussions with Greater Shepparton City Council's Neighbourhoods and Children and Youth units and other relevant organisations to establish a youth program / regular youth activities in Katandra West such as mobile blue light discos.</li> </ul>	<ul style="list-style-type: none"> <li>• Greater Shepparton City Council's Neighbourhoods and Children and Youth units</li> <li>• Katandra West CFA</li> <li>• Katandra West Guides</li> <li>• Churches</li> <li>• Police</li> </ul>	Committee time.	HIGH
10	<b>Continue to improve storm water drainage in Katandra West to reduce</b>	<ul style="list-style-type: none"> <li>• KWCPG to undertake an initial audit to identify areas that are flood prone and where storm water drainage needs to be improved, using information from the</li> </ul>	<ul style="list-style-type: none"> <li>• Greater Shepparton City Council's Projects and Works units</li> </ul>	Committee time.	HIGH

NO	STRATEGY	ACTIONS	PARTNERS	RESOURCES	PRIORITY
.	<b>potential for flooding of homes, the school and businesses.</b>	<p>February 2012 flooding and other local knowledge / resources.</p> <ul style="list-style-type: none"> <li>• KWCPG to liaise with Greater Shepparton City Council's Projects and Works units to ensure that storm water drains in areas prone to flooding are continued to be improved and that information is provided on farming areas that may need to be rectified to prevent rural water entering the urban system.</li> </ul>			
11	<b>Install a street light at the entrance of the Recreation Reserve and paint a white line down the middle of the road near the entrance to increase safety around the Reserve.</b>	<ul style="list-style-type: none"> <li>• KWCPG to liaise with Greater Shepparton City Council's Works unit to install a light at the entrance to the Recreation Reserve to improve safety for vehicles entering or exiting the site, and for vehicles driving past the site.</li> <li>• KWCPG to liaise with Greater Shepparton City Council's Works unit to paint a white line down the middle of the road adjacent to the entry of the Recreation Reserve to ensure that drivers are aware of the correct side of the road on which to travel, particularly in foggy weather.</li> </ul>	<ul style="list-style-type: none"> <li>• Greater Shepparton City Council's Works unit</li> </ul>	KWCPG to source internal and external funds for light and road painting.	HIGH
12	<b>Locate a home for the Katandra West Historical Group's artifacts and photo display.</b>	<ul style="list-style-type: none"> <li>• KWCPG to work in partnership with Katandra West Historical Group to identify a secure and centrally located home within the town for storage and display of the Historical Group's artifacts and photographs.</li> </ul>	<ul style="list-style-type: none"> <li>• Katandra West Historical Group</li> <li>• Other partners yet to be determined.</li> </ul>	<p>Committee time.</p> <p>Possibly some funds for refurbishment.</p>	HIGH

NO	STRATEGY	ACTIONS	PARTNERS	RESOURCES	PRIORITY
13	<b>Produce an annual community directory to promote clubs / organisations.</b>	<ul style="list-style-type: none"> <li>• KWCPG to liaise with Greater Shepparton City Council's Leisure Services unit to develop an online and hardcopy version of a community directory</li> <li>• KWCPG to seek a computer literate volunteer to regularly update the online and hard copy directory.</li> <li>• KWCPG to launch the directory each year at a free community event where local groups are encouraged to provide 'come and try' activities or 'invite a friend' promotions.</li> </ul>	<ul style="list-style-type: none"> <li>• Greater Shepparton City Council's Leisure Services units</li> <li>• All clubs and organisations based in Katandra West</li> <li>• Local businesses</li> </ul>	<p>Committee time.</p> <p>Advertising fees from local businesses / groups to cover the cost of the annual internet hosting fees.</p>	HIGH
14	<b>Construct new netball / tennis courts and develop club / change rooms as per the Katandra West Recreation Reserve Master Plan</b>	<ul style="list-style-type: none"> <li>• KWCPG to liaise with Greater Shepparton City Council's Recreation and Parks unit to identify exact location, alignment, surface type, run-offs, lighting, player shelters, etc required for shared netball and tennis facilities, in line with the recommendations contained within the Master Plan.</li> </ul>	<ul style="list-style-type: none"> <li>• Greater Shepparton City Council's Recreation and Parks unit</li> <li>• Netball Club</li> <li>• Tennis Club</li> </ul>	<p>KSCPG to seek funding from Greater Shepparton City Council, netball club and tennis club.</p>	HIGH
15	<b>Advocate for improvements to the condition and maintenance of all roads, including minor roads in the Katandra West District.</b>	<ul style="list-style-type: none"> <li>• KWCPG to undertake an audit of local roads in need of repair.</li> <li>• KWCPG to facilitate a meeting with Greater Shepparton City Council's Works unit (and VicRoads if required) to identify a process for improving and developing roads in accordance with Council's / VicRoad's policies, resource availability and community need.</li> </ul>	<ul style="list-style-type: none"> <li>• Greater Shepparton City Council's Works unit</li> <li>• VicRoads</li> </ul>	<p>Committee time.</p>	HIGH-MEDIUM

NO	STRATEGY	ACTIONS	PARTNERS	RESOURCES	PRIORITY
16	<b>Advocate for improvements to the condition of footpaths.</b>	<ul style="list-style-type: none"> <li>• KWCPG to undertake an audit of existing footpaths in need of repair and areas in need of new footpaths.</li> <li>• KWCPG to meet with Greater Shepparton City Council's Works unit to identify a process for improving and developing footpaths in accordance with Council's policy, resource availability and community need.</li> <li>• KWCPG to advocate to Greater Shepparton City Council's Planning Unit for the development of suitable footpaths as part of any subdivision, in accordance with the Developer Contribution Scheme.</li> </ul>	<ul style="list-style-type: none"> <li>• Greater Shepparton City Council's Works unit</li> <li>• Greater Shepparton's Planning unit</li> </ul>	Committee time.	HIGH-MEDIUM
17	<b>Improve street lighting throughout Katandra West</b>	<ul style="list-style-type: none"> <li>• KWCPG to undertake an audit of street lighting to identify areas needing improvements.</li> <li>• KWCPG to initiate a meeting with Greater Shepparton City Council's Works unit MCPG to report back areas in most need of improvements and to seek funding to assist with improving street lighting.</li> </ul>	<ul style="list-style-type: none"> <li>• Greater Shepparton City Council's Works unit</li> </ul>	Committee time.	HIGH-MEDIUM

# Implementation Plan

In order that the key priorities identified in the Katandra West Community Plan are able to be achieved, it is critical that a strong, local Steering Committee is established to meet regularly to discuss and review the plan. It would be expected that membership of such a committee is made up of a broad cross-representation of community members with an overall interest in advancing Katandra West. Such a Committee should meet quarterly to discuss priorities and the actions required to achieve the priorities. When required, it would be expected that sub-committees or working groups are established by co-opting other members of the community with a specific interest in a topic. These groups may meet more regularly and will report back to the Steering Committee. It would also be expected that the Steering Committee meets with Council on an annual basis to discuss the progress of the Community Plan and to identify additional barriers and opportunities.

Such a committee will require ongoing support from Council officers. Ideally Council officers will attend each of the quarterly steering committee meetings in an advisory capacity (i.e. non-voting role). Council staff will preferably follow up on specific issues for the steering committee and provide information on existing Council policies or strategic directions that may impact on the achievement of community priorities. This will ensure that two-way communication occurs between the Planning Group and Council and will help to develop mutually beneficial relationships and partnerships.



