

ATTACHMENT TO AGENDA ITEM

Ordinary Meeting

20 August 2013

Agenda Item 6.1 Endorsement of the Tallygaroopna Community Plan

Attachment 1 Tallygaroopna Community Plan 189



GREATER
SHEPPARTON

Tallygaroopna COMMUNITY PLAN

Our Vision:

*Tallygaroopna is a thriving,
caring, friendly and strong
community.*

2013 – 2018



Tallygaroopna Community Plan 2013 – 2018

Table of Contents

Table of Contents.....	2
Introduction	3
How did we develop our Community Plan?	3
History of Tallygaroopna and District	5
Who lives in Tallygaroopna?	6
Our People.....	6
Our Cultural Diversity	6
A Snapshot of Our Statistics.....	7
Our Community Make-Up.....	7
Work and Income	8
Our Services.....	9
The Future	9
Our Key Strengths	10
Our Key Challenges.....	12
Our Vision for Tallygaroopna.....	14
Our Priority Actions	14
Implementation of the priority actions	17
References.....	18
Thanks to our Community Plan Project Team	18

Introduction

The Tallygaroopna Community Plan identifies our community vision for our future and the priority projects and actions we have identified that will help us to achieve our vision. The Community Plan will be a guide for future activities and will be used to seek support and funding from relevant organisations for specific projects.

Our Vision: Tallygaroopna is thriving, caring, friendly and strong community.

A dedicated project team was established to develop this Plan in February 2012. The team included local residents, officers from Greater Shepparton City Council and consultants. The community was engaged throughout the process to ensure this Plan is reflective of their needs.

Achievement of the priorities identified in the plan will need continued community support and the development of a strong partnership with Greater Shepparton City Council and other relevant organisations, to make implementation of the Plan a reality. This means that the development of this Plan is not the end of this process but the start!

The issues and ideas identified in our plan should be viewed as a "snap shot in time". New emerging issues and changing community needs will mean this Plan will need to be regularly reviewed and updated to ensure it remains relevant.

How did we develop our Community Plan?

The Tallygaroopna Community Plan Project Team was established to develop this Plan in February 2012. The project team met twice in February before serious flooding occurred in March 2012 and the planning process was placed on hold as the community focused their efforts into flood recovery activities.

The planning resumed again with the project team meeting in February 2013 and from this a plan was developed for the community consultation process to ensure the community could have input into the Community Plan.

Community contribution and input into the future of our community was sought through:

- **Events** – The Community Flood Anniversary picnic tea in the park was used to launch the consultation process
- A **survey** was available online and hard copies available through the community representatives
- **Interviews** with key community groups
- Street by **Street Door Knock** in the township
- **Three Wishes Campaign** – residents were invited to identify their 'Three Wishes' for Tallygaroopna with feedback boxes at the P.O and school
- **Children's Art** activities
- **Photo gallery** collection
- A **Community Forum** was held to create a vision and identify priority projects from the survey and three wishes feedback



Our 'Three Wishes' mascot

Tallygaroopna Community Plan 2013 – 2018

More than 74 individuals contributed their thoughts and ideas which represents 27% of the township population (this may overestimate response rate as some people probably participated in more than one consultation activity). Children contributed art work to the project representing what they love about Tallygaroopna, and 8 different community groups were interviewed.

The consultants also met with key relevant council representatives to develop a better understanding of current council plans, strategies and policies relevant to the Tallygaroopna community. A number of relevant documents were also reviewed including:

- Greater Shepparton Council Plan and Strategic Resource Plan (2009-2013)
- Tallygaroopna Urban Design Framework (2003)
- Greater Shepparton Housing Strategy (2011)
- Early Years Service and Future Demand Analysis: Draft Report (2011)
- Tallygaroopna and District Times and Tales (1990)



The RSL Hall, Tallygaroopna

History of Tallygaroopna and District

Tallygaroopna is the name of our town, and also refers to the rural district 15 km north of Shepparton, in northern Victoria. It was named after the Tallygaroopna pastoral run, which had been taken up by Edward Khull in 1841. The original run was later occupied by Sherbourne Sheppard (1843-52), whom the town of Shepparton is named after.

It is thought that the name Tallygaroopna was derived from an Aboriginal word meaning large tree or trees.¹ The first inhabitants of the area were Kaeilthebans, a sub-tribe of the Bangerang who occupied the Lower Goulburn Region.

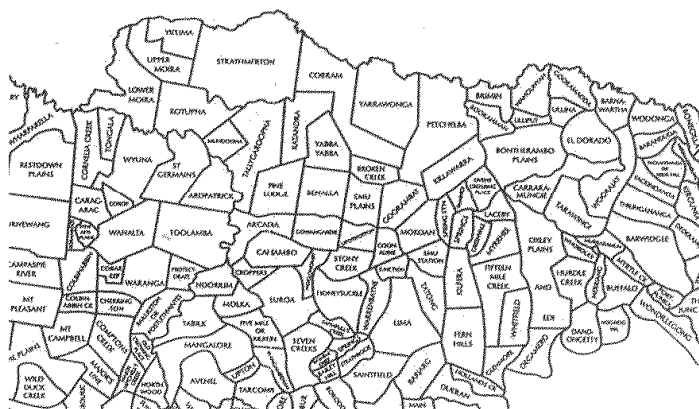
During the 1870s the pastoral run was subdivided for farm selections. The Tallygaroopna homestead estate was reduced to 133 ha. It contains a restored hut built by Sheppard and a large homestead (1906), overlooking the Goulburn River.²

The first settled area during the farm selection period was Tallygaroopna West, where a school was opened in 1877. Tallygaroopna Primary School opened in 1890, and is still the current primary school servicing the township and surrounds.

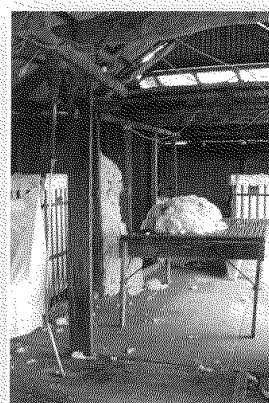
The opening of the railway line from Shepparton to Numurkah (1881) resulted in the present township area. The last passenger train went through Tallygaroopna station in 1986 as personal use of cars overtook the use of public transport.

The Mechanics' Institute, since replaced by an impressive District Soldiers' Memorial Hall (1924), dated from about then. Methodist and Anglican churches opened at Tallygaroopna West during the 1880s.

The introduction of irrigation was followed by closer-settlement estates during the 1920s. The construction of new wheat silos in 1941 reflected the increase in wheat production in the area.



¹ Tallygaroopna and District Times and Tales Compiled by Elsie Brady 1990

² http://www.onlymelbourne.com.au/melbourne_details.php?id=6678

In the shearing shed

Tallygaroopna Community Plan 2013 – 2018

Who lives in Tallygaroopna?

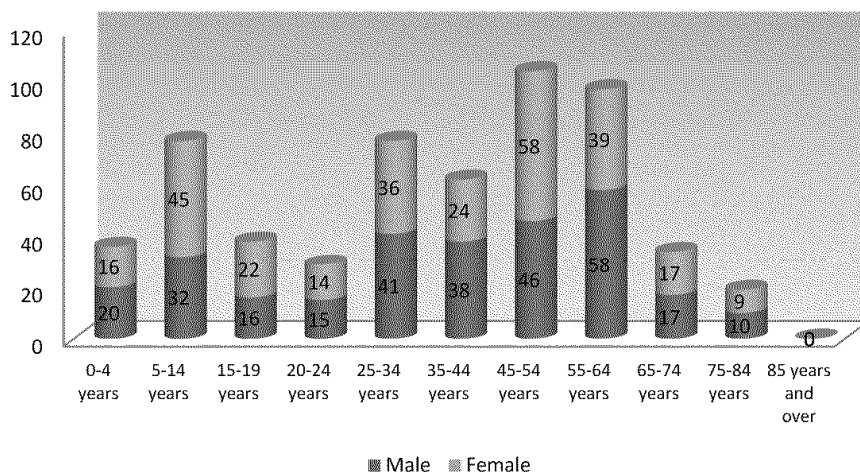
Our People

Tallygaroopna's demographics have remained relatively unchanged for the past two decades. Its population increased slightly during the 1990's, declined slightly between 2001 and 2006, and then was relatively stable between 2006 and 2011.³

For the past five years the town's resident population has endured at 270 with the median age increasing slightly from 32 to 35 years, yet remaining below the Australian median of 37 years. Taking into account the town's surrounds, 573 people reside in the district.

The largest age demographic for male people from Tallygaroopna is 55-59 years (10.6%) and for females it is 45-49 years (10.7%).

Figure 1 Tallygaroopna area population as at 2011, source ABS Census



Our Cultural Diversity

Despite being 16.3km north of the more cosmopolitan Shepparton⁴, the town's population does not reflect a high level of cultural diversity and Aboriginal or Torres Strait Islander people only account for 3% of residents. Given most residents have both parents born in Australia (85.9%) it is not surprising that most only speak English at home (93.3%).

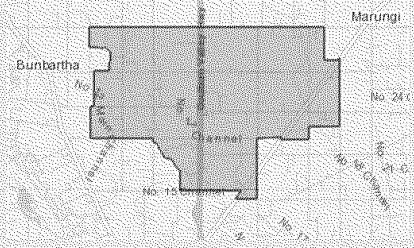
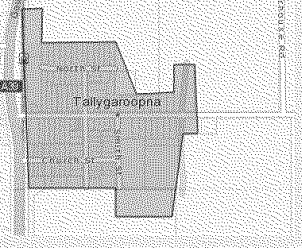
Most residents are Australian born (88.1% in the township and 86% across the area) with small numbers in the township from England, Netherlands and New Zealand and few from outside the town from Scotland, Zimbabwe and Greece. Most residents consider themselves to have no religious affiliation (27%) or to be Catholic (23.7%), with fewer recorded as Anglican (13.7%), Uniting Church (12.2%) or Presbyterian and Reformed (8.9%).

³ <http://profile.id.com.au/shepparton/about/?WebID=130>

⁴ To contrast, in Shepparton 22.9% of residents' have both parents born overseas (Tallygaroopna 7.9%);

Tallygaroopna Community Plan 2013 – 2018

A Snapshot of Our Statistics

Tallygaroopna area (85 sq Kms)		Tallygaroopna township	
			
People	573	270	
Male	292	138	
Female	281	132	
Median age	38	35	
Families	155	72	
Average children per family	1.9	1.8	
All private dwellings	214	94	
Average people per household	2.8	2.9	
Median weekly household income	\$1 319	\$1 363	
Median monthly mortgage repayment	\$1 434	\$1 517	
Average motor vehicles per dwelling	2.4	2.2	

Source: ABS Census 2011

Our Community Make-Up

In the Tallygaroopna area most adults are married (58%) and few people are divorced (8.4%), separated (2.8%) or widowed (2.4%). There are 72 families in town and a total of 155 families in the area, of these, more than half (52.3%) are couples with children.

There are almost 100 dwellings in the township and a further 114 in the surrounds, most have three bedrooms, house an average of three people and have two vehicles.

Thirty per cent (27.5%) of people in Tallygaroopna finished their Year 12 studies (or equivalent) and many left school at year ten level or year eleven level. This is less than the Shepparton (34.9%), Victorian (51.7%) and national average (49.2%).⁵

⁵ <http://www.sbs.com.au/censusexplorer/>

Tallygaroopna Community Plan 2013 – 2018

Work and Income

A greater proportion of people work full time (60.4%) with only 5.6% of Tallygaroopna residents recording themselves as unemployed at the time of the last census. This is exactly the same as the Australian average for that time, but slightly higher than the overall Victorian figure of 5.4%.

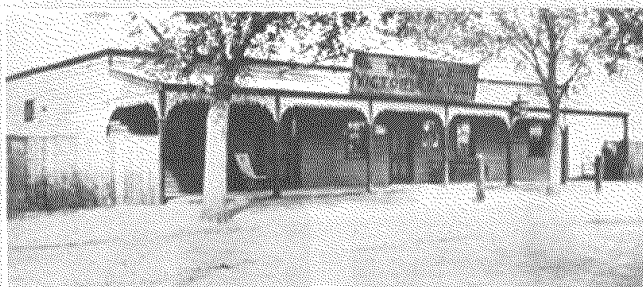
Half of the town's dwellings are owned with a mortgage (50.6%) requiring monthly repayments of approximately \$1,517. Tallygaroopna has a high level of home ownership with more houses owned outright (44.3%) compared to Victoria as a whole (34.2%) and nationally (32.1%). Of the very limited homes available for rent, median rental is \$160 weekly in town and even cheaper in the surrounding areas (\$100), both of which is significantly less than Victoria generally (\$277/week) and the Australian average (\$285/week).

Most households from Tallygaroopna (22.8%) earned \$1,319 weekly and total family income was an average of \$1,455, the difference reflecting that a high number of couple-families consist of both one person full-time and another in part-time employment.

Approximately thirty-two small businesses, including farm based businesses, are located in the Tallygaroopna area.

Most workers who live in the Tallygaroopna area are employed in dairy cattle farming (7.3%), beef cattle and grain farming (7%), and fruit and vegetable processing (4.3%) industries. This is reflective of the prominence of agricultural and food manufacturing underpinning the Goulburn Valley economy. The most common type of occupation is technician and trade worker (25%) with the second most common occupation being a labourer (13.6%), followed by sales worker (12.1%) and community and personal service workers (11.4%), machinery operators and drivers (9.8%), clerical and administrative workers (9.1%) or managers (6.1%).

Of those living within the township, many (6%) work in the supermarket or grocery sector, hospital sector (5.2%), residential care services (5.2%), fruit and vegetable processing (4.5%) and State government administration (4.5%). Interestingly a number of people in management roles live outside the township (19%), hence it can be assumed they travel to Shepparton or other centres for work.



The Tallygaroopna Hotel circa 1920's



Tallygaroopna Hotel circa 1990's

Tallygaroopna Community Plan 2013 – 2018

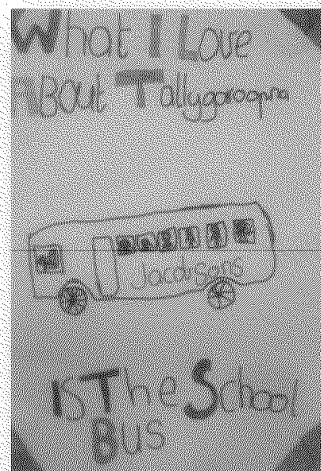
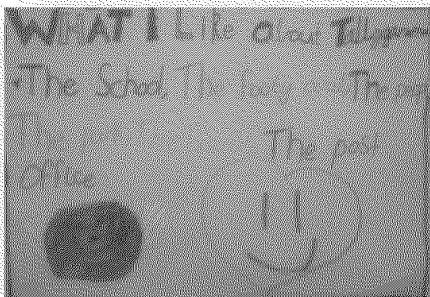
Our Services

In 2012 fifty students attended Tallygaroopna Primary School, a slight decrease of five students since 2009.^{6,7} The town also has a Children's Centre, Post Office/ shop and Town Hall.

Tallygaroopna's township has water, electricity and telecommunication services. It has a closed railway station along the Goulburn Valley railway. According to the City of Greater Shepparton Planning Scheme⁸ any town expansion is anticipated to occur in a north and northeast direction.

Sixty per cent of locals have broadband and the area will be provided with Next Generation Wireless as part of the National Broadband Network rollout. Twenty per cent of the area's residents do not have an internet connection.

The Recreation Reserve is home to Tallygaroopna's Bowling Club, the Northerners Cricket Club (combined Congupna-Tallygaroopna cricket clubs) along with its football-netball club, which plays in the Kyabram District League. The Reserve was a recipient of government funds to revamp its change rooms in 2006. There has in the past been a tennis club, currently in recession.

*The Future*

There is currently limited opportunity for growth in Tallygaroopna. Shepparton is forecast to grow at 1.17% per annum, representing an influx of 15,259 people between 2013 and 2031. Restraints for growth in the township are the availability of domestic water supply and land available for subdivision.

⁶ <http://www.education.vic.gov.au/Documents/about/department/2012summarystats.pdf>

⁷ <http://www.eduweb.vic.gov.au/edulibrary/public/publ/research/publ/statistics2009feb2.pdf>

⁸ http://www.dpcd.vic.gov.au/planning/planningschemes/get-information/historical-planning-information/planning-scheme-history-index/Greater-Shepparton?sq_content_src=%2BdXJsPWodHAlMoElMKYIMkZzMy5kcGNkLnZpYy5nb3YyYXUIMkZwbGFubmluZ19zY2h1bWVfaGlzdG9yeSUyRjQ5ZDIiMjE5OTM5MGJlZmEwZGlzY2h1YzAwMG12NGE3LnBkZiZhbGw9MQ%3D%3D

Our Key Strengths

Community groups and Organisations

There are a range of community groups and organisations that all provide opportunities for residents to get involved in the community and create local networks. Our community groups include:

- The Congupna-Tallygaroopna Landcare group
- The CFA
- The Tallygaroopna Memorial Hall Management Committee
- The Lions Club
- The Presbyterian Church
- The Tallygaroopna Recreation Reserve Management Committee

Education and Occasional Care Services

The Tallygaroopna Primary School has around 50 students enrolled, with two teachers and one teacher/principal on staff. In addition the school also benefits from input from a number of specialist support staff servicing schools within the region. The school also offers an active after school program. The Tallygaroopna Preschool has around 20 children and also offers a childcare one day a week. The Zeerust Primary School also operates within the Tallygaroopna District and has around 20 students.



Kindergarten kids in action

Our people and community spirit

A key strength identified in all the consultation processes was the people of the Tallygaroopna Community. The community spirit is particularly evident and strongly appreciated in a time of crisis such as the floods in March 2012. There is currently a flood recovery committee for Tallygaroopna that have been working on a Flood Recovery Plan for the Community. This plan outlines key contacts and actions for residents in the event of another flood event.



Congupna-Tallygaroopna Landcare and Tallygaroopna Primary School Tree planting

Sport and Recreation

Tallygaroopna has a wide range of sporting groups and quality sporting and recreational infrastructure at the Recreation Reserve. Sporting groups continue to attract both local members as well as members who travel to Tallygaroopna to play sport from Shepparton and surrounding district areas, groups include:

- The Bowls club
- The Tallygaroopna Football club
- The Tallygaroopna Netball club
- The Tennis club
- The Golf club
- The Cricket club



The Tallygaroopna Recreation reserve caters for all of these sports and has a large multi-purpose building which overlooks the sporting field as well as a hard surface court area for tennis and netball. The reserve had a new playground installed in 2005. The multi-purpose building can be used for social or private functions.

The multi-purpose building can seat 150 comfortably and has a fully equipped kitchen and bar facility. A feature of the building is the provision of relatively new change rooms, with storage space and showers. The sport and recreation infrastructure currently in place includes:

- One sports oval with training lights, scoreboard and time keeper's box
- Two netball courts with a synthetic surface, lighting
- Two tennis courts with competition standard lighting
- One synthetic bowling green with standard lights and a small pavilion
- Three cricket practice nets
- Change room facilities
- A walking track partway around the sports oval
- Playground with play equipment



The Tallygaroopna Recreation reserve management committee have worked in partnership with the Greater Shepparton City Council to develop a master plan for the site and continue to work on implementing the improvements identified.

Transport and proximity to Shepparton

A major strength for Tallygaroopna identified in the consultation was its proximity to Shepparton (approximately 16 km), connected by the Goulburn Valley Highway, just passing the town entrance. The township has a network of sealed urban roads and a network of rural roads surrounding the town. Within the town there is a 40km per hour zone near the school.

School buses are available to transport secondary school students to Shepparton by bus. There is also V-line bus stop at the Larsen Reserve park, with public toilets and a rest area. The V-Line coach service connects to Tocumwal and Shepparton, and includes a stop at the Goulburn Valley Hospital in Shepparton and has wheelchair access.

Our Key Challenges

Community Groups and Organisations

A number of community groups and organisations in Tallygaroopna are struggling for numbers and a few are currently in recess due to lack of numbers. Some groups may cease to exist unless new members join in the very near future.

Many of the people who volunteer in community groups and organisations, are the same few involved in other community groups. There does not appear to be many others in the community ready to step up to contribute to these important roles. Without a willingness to get involved, many of our organisations simply may not continue to operate.

Recreation and Health

Walking and cycling tracks

Although there is already an off road walking / cycling path around the perimeter of the Recreation Reserve, this path could be vastly improved by linking it to key locations within the town such as the school, the Memorial hall, the Post Office, and AF Larsen Reserve. It could also be improved with the addition of interpretative signage for natural and historical sites.

Activities for young people

For those young people not involved in organised team sport there is a gap in the provision of unstructured or alternative recreational activities such as skate boarding, BMX riding, and a place where young people can just meet up informally.

Services

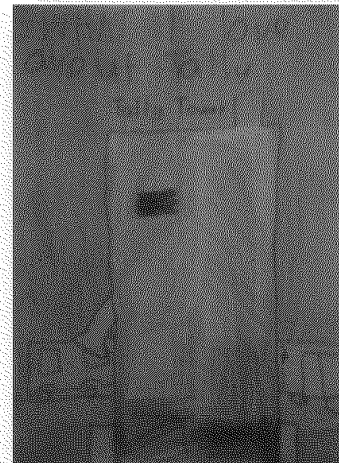
Support services and activities for older people

Residents of Tallygaroopna are required to travel to Shepparton to access health services. This maybe more difficult for some elderly residents as there are limited public transport options. Transport options, particularly for medical appointments in Shepparton need to be explored.

Activities for older residents may also help to overcome isolation such as cards, carpet bowls and other activities.

Support services and activities for children

There are concerns around maintaining the viability of the Preschool, Primary School and occasional care services for the town. These programs include local enrolments as well as enrolments from families outside the district, including Shepparton. This highlights the need to attract families to the town to ensure the long term viability of early children's services and the need to ensure the creation of strong social networks within the town.



Tallygaroopna Community Plan 2013 – 2018

Infrastructure*Street upgrades*

Poor lighting or no street lighting has been identified as a safety issue by residents, particularly down the main street. Most streets in Tallygaroopna have no footpaths at all. A lack of footpaths can discourage physical activity and can result in people walking on the road, creating a safety risk to themselves and other road users. There is particular concern for school children walking to school or to the bus stop.

Improved Drainage

Recent flooding in the township and district has highlighted the challenges with drainage in and around the township. The community believe there needs to be improvements made to storm water drains as well as making more use of local knowledge to inform the maintenance programs and upgrade programs.

Current infrastructure

Current infrastructure limitations are seen as a key constraint to business and urban growth. The community believe that connection to natural gas, sewage and water pressure are a key to enabling town growth and expansion.

Enhancement to the entrance of the town

The community feel that currently there is a lack of an entrance to the township. They would like to see more signage at the entrance, more signage on the Goulburn Valley Highway to encourage people to stop in town and use the facilities as well as some upgrading to the landscaping and vegetation around the entrance.

Community Growth and Business Development

The community recognise there are major challenges of attracting more business/industry to Tallygaroopna. There needs to be a viable market that will support the business, there needs to be appropriately zoned land and available land, and access to services required.

The lack of sewerage in Tallygaroopna is seen as key constraint to community growth as it impacts on the size of house blocks required, under planning regulations, for development (i.e. blocks must be 4,000 square metres or an acre in size for effective septic system operation). There are concerns that without new families coming into the community this will have flow on effects for other community organisations such as the school and sporting groups.

Tallygaroopna Community Plan 2013 – 2018

Our Vision for Tallygaroopna

*Our Vision: Tallygaroopna is thriving, caring,
friendly and strong community.*

Our Priority Actions

The following priority actions have been developed by the Tallygaroopna Community Plan Project Team based on information gained from community consultations and Greater Shepparton City Council. Greater Shepparton City Council's Community Strengthening Branch will provide ongoing support and assistance to the Tallygaroopna community particularly advice on funding opportunities from a range of sources, and connections with relevant Council officers to further develop these ideas and achieve implementation.

Priority action	Key tasks	Potential partners	Priority ranking
Community strengthening			
Community Notice Board	<ul style="list-style-type: none"> Develop Design concept Location options explored Produce a community directory to place on the notice board- annually updated - with community groups and key contacts 	<ul style="list-style-type: none"> Greater Shepparton City Council Local community groups External funding through corporate, government, philanthropic sources 	High
Recognition of volunteers	<ul style="list-style-type: none"> No specific actions yet identified 	<ul style="list-style-type: none"> Local community groups and organisations Greater Shepparton City Council Victorian Volunteering Portal 	Medium
Community events for locals	<ul style="list-style-type: none"> Calendar of existing community events Approach community groups to host an event eg School holiday activities Community BBQ High tea in the hall 	<ul style="list-style-type: none"> Local community groups Greater Shepparton City Council – Active Living Branch School Parents Association Visitor Information Centre 	Medium
Community events to attract visitors	<ul style="list-style-type: none"> Explore options with Councils Arts, Events and Tourism department Fun run Music festival The great Tally bike race Establish a committee to develop the concept 	<ul style="list-style-type: none"> Greater Shepparton City Council Local community groups External funding through corporate, government, philanthropic sources 	Medium

Tallygaroopna Community Plan 2013 – 2018

Recreation and Health			
Walking/Cycling track	<ul style="list-style-type: none"> Finish the proposed track Develop proposal for extension of the track and a proposed route Explore signage options for natural and historical sites of significance 	<ul style="list-style-type: none"> Greater Shepparton City Council. Tallygaroopna Recreation reserve management committee Congupna and Tallygaroopna Landcare group Cycling Victoria External funding through corporate, government, philanthropic sources 	High
Recreation Reserve upgrades	<ul style="list-style-type: none"> Installation of power upgrade to the facility to allow installation of Air conditioning Kitchen upgrade 	<ul style="list-style-type: none"> Greater Shepparton City Council. Tallygaroopna Recreation reserve management committee 	Medium
Recreation and Fitness activities	<ul style="list-style-type: none"> Identify activity options currently available through council's active living program Canvas community support for available options such as: <ul style="list-style-type: none"> Exercise group Walking group Fitness activities in the park 	<ul style="list-style-type: none"> Greater Shepparton City Council Local community 	Medium

Infrastructure			
Improvements to town infrastructure	<ul style="list-style-type: none"> Explore options to provide connections to natural gas, sewage, and better water pressure 	<ul style="list-style-type: none"> Greater Shepparton City Council APA Group Natural Gas Goulburn Valley Water 	High
Enhancement to the township entrance	<ul style="list-style-type: none"> Signage at the town entrance Signage to the town off the highway Landscape upgrade and tidy up 	<ul style="list-style-type: none"> Greater Shepparton City Council. Congupna and Tallygaroopna Landcare group Tallygaroopna Primary School Lions Club Local community 	High
Improved Drainage for the township	<ul style="list-style-type: none"> Communication of current plans and actions to date and for future plans Develop partnership approach with council maintenance program to enable the use of local knowledge to inform the program 	<ul style="list-style-type: none"> Greater Shepparton City Council. Tallygaroopna Flood Recovery planning Committee 	Medium
Street upgrades	<ul style="list-style-type: none"> Undertake street lighting audit Identify priority locations for additional street lighting Liaise with councils works department to ensure inclusion in the works program 	<ul style="list-style-type: none"> Greater Shepparton City Council Local community 	Medium

Tallygaroopna Community Plan 2013 – 2018

Growth and Business development			
Planning for town growth - rural and urban living zones and potential industry zones	<ul style="list-style-type: none"> Identify key areas zoned for rural and urban living sub division with town planners Identify potential developers Canvas interest 	<ul style="list-style-type: none"> Greater Shepparton City Council Relevant district landowners Land developers Real Estate agencies 	Medium
Encourage business Development in the town	<ul style="list-style-type: none"> Work with councils investment attraction department to develop a promotion strategy to attract business relocation or start up to the town 	<ul style="list-style-type: none"> Greater Shepparton City Council 	Medium

Services			
Support services and activities for older people in town	<ul style="list-style-type: none"> Work with Councils Home and Community care program to explore options for transport for health services and options for activities based programs in the town 	<ul style="list-style-type: none"> Greater Shepparton City Council Tallygaroopna Primary School 	High
Maintain support services and activities for early childhood.	<ul style="list-style-type: none"> Work with councils investment attraction department and the children and youth department to develop promotion material and a promotion strategy for the current services 	<ul style="list-style-type: none"> Greater Shepparton City Council Tallygaroopna Primary School Tallygaroopna preschool 	High



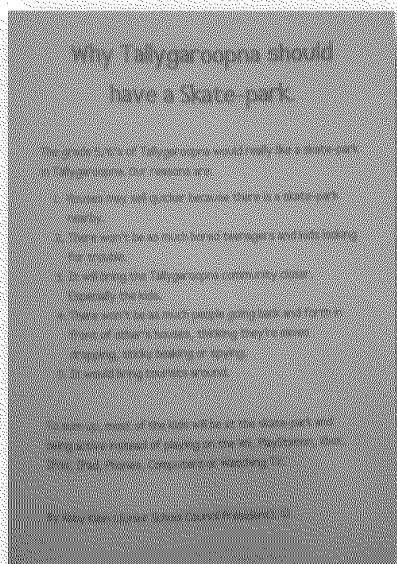
Tallygaroopna: meaning Big Tree

Implementation of the priority actions

Achievement of these priority actions will need continued community support and the development of a strong partnership with Greater Shepparton City Council and other relevant organisations, to make implementation of the plan a reality. All of these actions will require the community to drive the effort and undertake further research, further development of project concepts and coordination of fundraising by the local community. Information on potential funding options can be explored through 'Our Community.com.au', Grants Link and the Victorian Volunteering Portal.

The implementation phase of the plan represents another opportunity to get broad cross community involvement. Potential members with an interest in progressing their community will be invited to join a Tallygaroopna Community Plan Steering Committee. Some members from the community plan project team may wish to join and some may wish to step back and take a break. The Steering Committee could consider forming project working groups to progress specific projects, where community members with a specific interest in the topic could be co-opted. Invitations could also target younger members of the community to encourage local leadership development, including upper primary and secondary school kids.

Other potential ideas that could be considered by the committee for implementation include:



- Bus shelter upgrades for school bus services stops in the township
- Improved recycling services
- Upgrade kids play equipment in AF Larsen Park
- Skate Park
- Swimming pool
- Maintain banking service operating out of the Post Office
- Community Hub

Tallygaroopna Community Plan 2013 – 2018

References

<http://www.education.vic.gov.au/Documents/about/department/2012summarystats.pdf>

<http://www.eduweb.vic.gov.au/edulibrary/public/publ/research/publ/statistics2009feb2.pdf>

http://www.dpcd.vic.gov.au/planning/planningschemes/get-information/historical-planning-information/planning-scheme-history-index/Greater-Shepparton?sq_content_src=%2BdXJsPWodHAlMoElMkYlMkZzMy5kcGNkLnZpYy5nb3YuYXUIMkZwbGFubmluZ19zY2hlbWVfaGlzdG9yeSUyRjQ5ZDliMjEyOTM5MGJlZmEwZGl2Y2l1YzAwMG12NGE3LnBkZiZhbCw9MQ%3D%3D

<http://www.mmg.com.au/local-news/shepparton/tallygaroopna-loses-its-social-hub-1.41114>

<http://www.sbs.com.au/censusexplorer/>

<http://profile.id.com.au/shepparton/about/?WebID=130>

http://www.censusdata.abs.gov.au/census_services/getproduct/census/2011/quickstat/UCL222106?opendocument&navpos=220

http://www.censusdata.abs.gov.au/census_services/getproduct/census/2011/quickstat/SSC21300?opendocument&navpos=220

<http://www.sbs.com.au/censusexplorer/>

Thanks to our Community Plan Project Team

Our Community representatives on the project team:

- Claire Haberfield
- Sue Lau
- Ronny Currie
- Tony Farrell
- Leanne Good
- Bev Montgomery
- Lynnette Currie
- Trish Moss
- Bernie O'Brien
- Deb Bagley

