



GREATER SHEPPARTON

GREAT THINGS HAPPEN HERE

COMMITTEE FOR
GREATER SHEPPARTON

GREATER
SHEPPARTON 

REGIONAL CITY DEAL

An Empowered Communities Region – Intervention to Investment

RAIL

Passenger Rail Funded by State Government **\$356M**
Freight Rail Funded by Federal Government **\$10M**
Fast Rail



GV HIGHWAY SHEPPARTON BYPASS

Stage 1 **\$260M**
Ford and Wanganui Road to Arterial Route **\$100M**



CBD REVITALISATION

Mall Redevelopment **\$19M**
Shepparton Railway Precinct **\$14M**



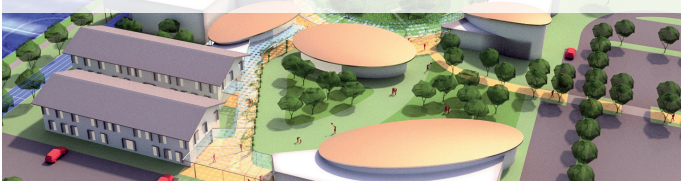
SHEPPARTON SPORTS AND EVENT CENTRE

Stage 1 **\$37M**



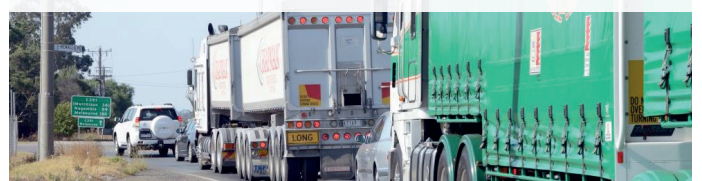
THE MUNARRA CENTRE FOR REGIONAL EXCELLENCE

\$23 million funded by State Government **\$56M**



GV LINK

Stage 1 **\$20M**



LA TROBE UNIVERSITY

Shepparton Campus Funding Extension **\$21.4M**



GOULBURN VALLEY HEALTH

Stage 2 Redevelopment **TBC**
Corio Street Campus **\$30M**



TOTAL REGIONAL CITY DEAL:

TOTAL AMOUNT UNFUNDED:

TOTAL REGIONAL BENEFIT:

TOTAL JOBS:

\$1.6 BILLION

\$1,130 MILLION

\$3 BILLION

8,330

- ① Rail
- ② GV Highway Shepparton Bypass Stage 1
- ③ CBD Revitalisation
- ④ Shepparton Sports and Events Centre
- ⑤ The Munarra Centre for Regional Excellence
- ⑥ GV Link
- ⑦ La Trobe University
- ⑧ Goulburn Valley Health: Stage 2 Redevelopment and Corio Street Campus



Goulburn Valley Hwy

Grahamvale Rd

Doyles Rd

Midland Hwy

FORD RD

INLAND FREIGHT RAIL

FAST PASSENGER RAIL

SHEPPARTON BYPASS STAGE 1

SHEPPARTON ALTERNATE ROUTE

GOULBURN VALLEY HIGHWAY

River Rd

Kialla West

Toolamba

Mooroopna Murchison Rd

Goulburn River

Shepparton

Mooroopna

Ardmona

BROKEN RIVER

GOULBURN RIVER

To Stanhope

MIDLAND HWY

Echuca Mooroopna Rd

HOW TO CREATE 8,330 JOBS IN THE GOULBURN VALLEY

Greater Shepparton is well known as the food bowl of Victoria and its economy is driven by agriculture. Situated within the Goulburn-Murray, the area is recognised as being the only Empowered Communities Region within Victoria which works towards the creation of an integrated community where Aboriginal people's rights are supported and their contributions are valued and celebrated.

Infrastructure is crucial to the creation of jobs and a socially stable Greater Shepparton. Investment in rail will increase access to the region and enhance the areas visitor economy and provide efficient means of moving freight from Greater Shepparton to the Port of Melbourne. Alongside the importance of connectivity is the urgency for education facilities to meet the ongoing demand of the local community supporting the careers and future of the regions youth, and filling critical skills gaps.

The establishment of modern health infrastructure, efficient and reliable connectivity, high quality facilities for education, an expanded state of the art sporting venue and an attractive and welcoming Central Business District is a combination that the Greater Shepparton community recognise as being crucial to the future of Greater Shepparton. These investments will reduce intervention and enhance personal wellbeing and pave the way for Greater Shepparton to become the most liveable city in Australia by 2025.

PROJECTS

1. Rail

- a) Improved and increased passenger rail services between Melbourne and Shepparton.

Cost: \$356 million

Stage 1, 2 & 3: \$356 million funded

Future Stage: TBC achieve 9 VLocity services

- b) Inland Freight Rail Tocumwal to Shepparton

Cost: \$10 million

- c) Fast Rail

2. Goulburn Valley Highway Shepparton Bypass – Stage One

Construction of stage one Midland Highway through to the GV Highway in north Shepparton Connection to the Shepparton Alternate Route.

Stage 1: \$260 million

Ford and Wanganui Rd: \$100 million

Total Cost: \$360 million

3. CBD Revitalisation

Creation of a modern, greener, lively and desirable retail and urban lifestyle precinct.

Revitalisation of:

- Maude Street Mall
Cost: \$19 million
- Railway Precinct
Cost: \$14 million

4. Shepparton Sports and Event Centre

Redevelopment of the Shepparton Sports Stadium as the final major component in the construction of Shepparton Sports City.

The full redevelopment includes:

- 4 additional multi use courts
 - 3,000 seat show court
 - 8 multipurpose squash courts
 - 2 court multipurpose flexible space
 - Sports house
 - Refurbished and new change rooms
 - Entry, café, car park and external works.
- Stage 1: \$37 million
Total cost: \$58 million

5. The Munarra Centre for Regional Excellence

A national state of the art centre designed as a hub of connection and transformation for Indigenous and non-Indigenous people across Australia.

- An Indigenous Academy and accommodation facility
 - Regional Sport Academy and specialist sports clinic
 - Cultural facilities
 - Cultural knowledge centre
- Stage 1 of \$23 million has been funded by the Victorian Government with stage 2 funding now being sought.
Total cost: \$56 million

6. GV Link

- The Goulburn Valley's Intermodal Freight Hub
 - A more efficient supply chain for regional products to market
 - Reduced congestion on roads into and around Melbourne
 - Direct rail access to the Port of Melbourne
 - Easier access to global markets for local businesses
 - Economic growth and prosperity
- Cost: Stage 1, \$20 million
Total cost: \$150 million

7. La Trobe University Expansion

Extend the existing building four levels and erect a three level multi deck car park to accommodate rapid growth in student numbers.

Building \$17.3M

Car park \$4.1M

Total cost: \$21.4M

8. Goulburn Valley Health:

- a) Stage 2 Redevelopment

GV Health provides regional health service for 250,000 residents. Inability to meet growing regional demand is placing pressure on service delivery.

Cost: TBC

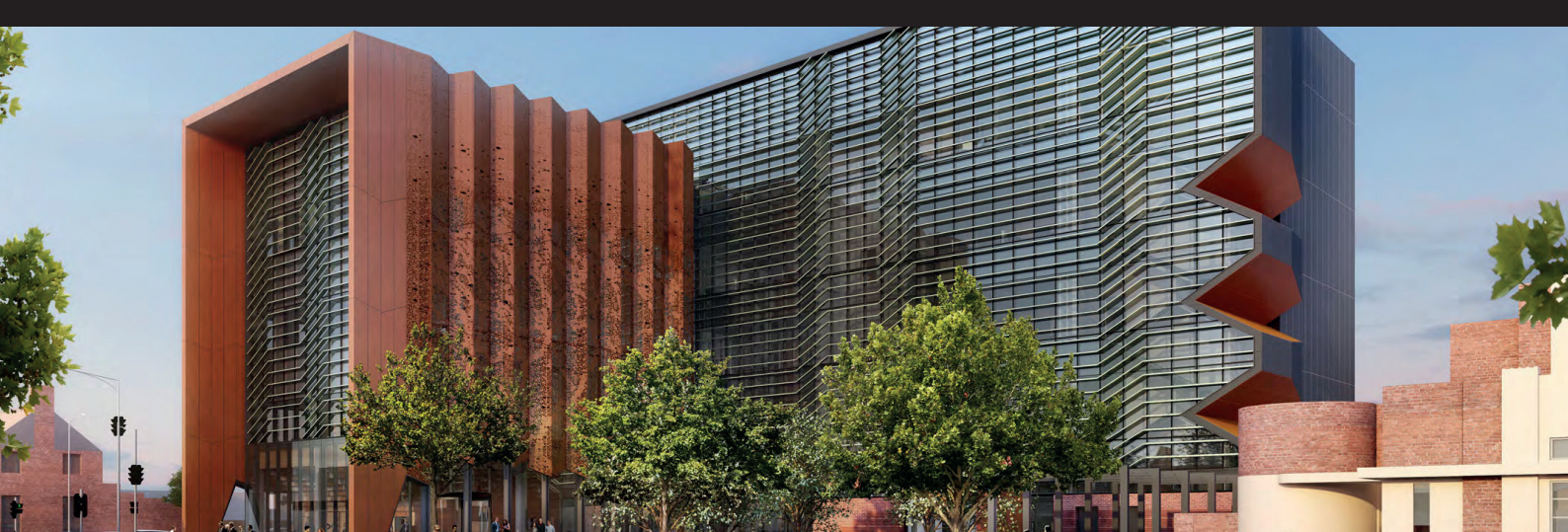
- b) Corio Street Campus

Goulburn Valley Health is seeking to increase the hospital's community footprint by redeveloping and refurbishing the existing Community Health building in Corio St, thereby establishing a Health Precinct.

Cost: \$30 million

EMPOWERED COMMUNITIES

Empowered Communities is a transformational reform that aims to empower communities by empowering people. The Goulburn Murray region is one of nine Empowered Communities sites across Australia. Recognising the importance of cultural sustainability and the need to empower Aboriginal people to have greater influence and control over the decisions that impact their lives, Greater Shepparton City Council would partner with the local Aboriginal community on a City Deal.



THE SKYLINE IS CHANGING



SO MANY POSSIBILITIES



CONTACT US
90 Welsford Street / Locked Bag 1000,
Shepparton VIC 3632, Australia
www.greatershepparton.com.au





1 RAIL A: PASSENGER RAIL SERVICES BETWEEN SHEPPARTON AND MELBOURNE

An upgrade of passenger rail services between Shepparton and Melbourne is the next essential step towards delivering better rail connectivity to Melbourne for Northern Victoria.

Background

Shepparton continues to only have four passenger rail services to and from Melbourne each weekday and three services set to be delivered on weekends. Whilst V/Line operates a further three bus services to and from Shepparton each weekday, all connecting with trains at Seymour, the bus services are grossly inadequate for a city the size of Greater Shepparton. Current provision does not fulfil the needs of Greater Shepparton for a timely and regular service direct to Melbourne, nor does it optimise the opportunity to leverage from investment in new infrastructure such as the new Shepparton Art Museum (SAM).

CURRENT COMMITMENT

To address the Greater Shepparton passenger rail needs both the State and Federal Governments have committed funding to undertake the following works:

Stage One: 2017

- stabling upgrade at Shepparton Station to give passengers a more frequent and reliable service, and to allow for a fifth daily return service between Shepparton and Melbourne by 2019;
- crossing loop extension near Murchison East to provide a freight path and improve service reliability; and
- 29 extra coach services between Shepparton and Seymour to connect with train services from May 2018 increasing the amount of daily services throughout the day ahead of new train services for the line.

State Government \$43.5 million

Stage Two: 2018

Stage Two will see:

- signalling and track upgrades on the line between Shepparton and Seymour to enable VLocity trains to travel at up to 130km/h with a 20-minute reduction in travel time;
- upgrades to 54 level crossings between Seymour and Shepparton;
- platform extensions at Shepparton, Mooroopna, Murchison East and Nagambie stations to improve amenity and reliability of the Shepparton Rail Line;
- further stabling for additional trains;
- the preparation of a feasibility study for Stage Three, the final stage, of the Shepparton Line Upgrade; and
- Business Case being undertaken to enable 9 VLocity daily return services - amount \$TBC.

State Government \$313 million

STILL REQUIRED

Despite the recent substantial investment in passenger rail, the State Government's current financial commitment does not address all the infrastructure requirements necessary for full VLocity operation by 2020 or provide a substantive increase in services nor reduce travel times.

Further investment in infrastructure is needed to achieve the two hour 10 minute journey time, **with 9 return VLocity services per day with operating speeds of 130km/h by 2020.**

In view of the rapid growth of Melbourne and resulting infrastructure improvements, in the medium term, there is also a need to ensure security of service and provide for **future train paths in Melbourne by addressing the Upfield connection.** In the future it will also be essential that Shepparton services are routed through **a new heavy rail link via Melbourne Airport.** Further work will be required to secure State and Federal Government commitment to ensuring that these strategic route developments deliver sustainable regional solutions.



INVESTMENT ASK

Upon completion of the business case, funding is to be allocated to achieve 9 VLocity services in 2 hr 10 min journey time.

Federal Government	
State Government	TBC
Greater Shepparton City Council	
Private	
Total	TBC

B: FREIGHT RAIL

The Melbourne to Brisbane Inland Rail project will deliver efficient and competitive movement of freight to the Port of Melbourne.

Background

Greater Shepparton is the Food Bowl of Victoria, producing fresh food and products for domestic and export markets. The route for the Inland Rail project excludes Shepparton despite 1.757M tonnes of freight volume estimated in year 2025 versus 225,000 tonne on the Albury/Wagga Wagga route. It is therefore imperative that investment on the Tocumwal to Shepparton line be undertaken to realise efficient transport of goods to the Port of Melbourne following the rail study that will be undertaken as part of the \$10M already allocated.

CURRENT COMMITMENT

It is imperative that **investment on the Tocumwal to Shepparton line be undertaken** to realise efficient transport of goods to the Port of Melbourne following the rail study that will be undertaken as part of the \$10M already allocated.

STILL REQUIRED

Capital investment on the Tocumwal to Shepparton line.

INVESTMENT ASK

Upgrade the Tocumwal to Shepparton line to enable efficient freight movement to the Port of Melbourne.

Federal Government	TBC
State Government	
Greater Shepparton City Council	
Private	
Total	TBC



C: FAST RAIL

Fast Rail is a game changer for regional communities in terms of liveability, tourism and economic activity.

Background

It is imperative that investment is made to deliver fast rail to regional cities such as Shepparton. Previous rail improvements in Victoria have been rolled out to individual regional communities disproportionately. The roll out of fast rail should be uniform to all regional areas. However private operations are currently participating in the Federal Government Business Case.

Council supports the realisation of the Melbourne Airport Rail Link, however it is crucial that this link caters for regional train services to ensure more frequent and faster connections from northern and north eastern areas of Victoria to Melbourne. Ideally, the Craigieburn – Wallan electrification project should be scheduled to coincide with the completion of the proposed link from Wallan to the CBD via Melbourne Airport. Wallan metro services are planned to operate via Upfield to and from the CBD, while services to and from Craigieburn will continue to operate via Essendon and Broadmeadows. If the diversion of north-eastern regional trains via Melbourne Airport has not been achieved prior to the implementation of the Wallan electrification project, these services will face the same challenges of achieving a satisfactory passage through the metropolitan area via Upfield as will be the case via Broadmeadows when the Melbourne Metro project is commissioned.

CURRENT COMMITMENT

The Federal Government has committed \$20 million in funding to develop fast rail business cases. Following a competitive assessment process, an announcement was made on 9 March 2018 that the Federal Government will provide matching funding for the development of three business cases. One of these business cases will be conducted by Consolidated Land and Rail Australia (CLARA) looking at the Melbourne to Greater Shepparton Corridor.

STILL REQUIRED

A complete regional commitment to Fast Rail including the Shepparton line.

INVESTMENT ASK

Development of infrastructure to enable Fast Rail from Melbourne to Brisbane via the Greater Shepparton corridor.

Federal Government	TBC
State Government	TBC
Greater Shepparton City Council	
Private	TBC
Total	TBC



2 CONSTRUCTION OF STAGE ONE OF THE GOULBURN VALLEY HIGHWAY SHEPPARTON BYPASS

Construction of the Goulburn Valley Highway Shepparton Bypass (Shepparton Bypass) is the next logical step in providing a fully duplicated highway from Shepparton to Melbourne.

Background

The Goulburn Valley Highway is an essential transport route, connecting the Goulburn Valley region with Melbourne. It also forms a vital link in the national highway system between Melbourne and Brisbane. Parts of the Goulburn Valley Highway around Greater Shepparton can no longer effectively cater for the large and increasing traffic volumes that use the highway daily. Our solution to address the highway's limitations is to build a bypass for Shepparton that will help bring balance through the region between community and industry needs. In 2016, the full 36km four-lane Shepparton Bypass was estimated to cost approximately \$1.3 billion. The project has therefore been split into five stages in order to obtain funding to get the project underway, including a single carriageway in the first instance.

Once funded, Stage One will include the construction of a 10km two lane road from the Midland Highway in Mooroopna, extending north along Excelsior Avenue and Cornish Road to Echuca Road, then east to Wanganui Road where it will re-join the Goulburn Valley Highway in Shepparton North. Stage One will provide a second Goulburn River crossing, broadly aligning with Wanganui Road in Shepparton North. This will provide much needed relief for the only existing Goulburn River crossing option along the Midland Highway (the Causeway between Mooroopna and Shepparton).

CURRENT COMMITMENT

The 2017/18 State Budget allocated \$10.2 million over three years to undertake preparatory works and land acquisition, which is a very welcome investment. This allocation will also include the construction of the Wanganui / GV Highway intersection.

STILL REQUIRED

The total projected cost of Stage One was estimated in 2016 to be \$260 million, including all preparatory works, land acquisition and construction, and it is hoped that commitment to deliver the full Stage One will be given in advance of the 2018 State Government elections and the future Federal Election.

Stage One

Midland Highway to Echuca-Mooroopna Road to Goulburn Valley Highway.

Length

10km

Ford and Wanganui Road upgrades

In order to facilitate connection between the Goulburn Valley Highway and the Shepparton Alternate Route, a substantial upgrade of Wanganui and Ford Roads is required - \$100 million.

Outcomes

Second river crossing between Shepparton and Mooroopna and will also involve road improvements to the east of Shepparton. Upgrading Wanganui Road and Ford Road to act an east-west arterial route connecting Stage One of the Shepparton Bypass to the Shepparton Alternative Route (Grahamvale Road).

INVESTMENT ASK

Federal Government	\$208M
State Government	\$100M + \$52M
Greater Shepparton City Council	
Private	
Total	\$360M



3 SHEPPARTON CBD TRANSFORMATION

A: MAUDE STREET MALL

An outstanding opportunity exists to transform Shepparton’s central business district (CBD) into a contemporary, lively and viable retail and lifestyle precinct.

Background

Council is currently undertaking a process of exploring design concepts for a redevelopment of Shepparton’s Maude Street Mall. The aim of the project is to improve the function and visual amenity of the Mall in maintaining its primacy as the heart of the Shepparton CBD. The Maude Street Mall and CBD have the potential to evolve to become the central focus of daily life within Greater Shepparton through an integrated approach to economic development, structure planning and proactive place activation.

Four design options were developed and released for community consultation:

Design One

Reintroduction of two-way traffic from Fryers to High Street - \$15.8 million

Design Two

Development of additional car parking facilities with connecting one-way access from High and/or Fryers Streets exiting at Stewart Street - \$15.9 million.

Design Three

New central public space - \$18.4 million.

Design Four

Shared streetscape - \$16.4 million.

The designs have been developed by Spiire, renowned for solving complex problems by using their skills in urban design, planning, surveying, engineering and landscape architecture. Consultation closed on 30 June, with a likely selection to be made by Councillors in September 2018.

CURRENT COMMITMENT

Council have allocated funds towards developing a detailed design for one of the four options in 2018/19.

STILL REQUIRED

Finalisation of detailed design and confirmation of business case.

INVESTMENT ASK

Federal Government	\$10M
State Government	\$5M
Greater Shepparton City Council	\$4M
Private	
Total	\$19M



3 SHEPPARTON CBD TRANSFORMATION

B: RAILWAY PRECINCT

The Shepparton Railway Precinct is located at the eastern edge of Shepparton Central Business District (CBD) which brings people into Shepparton and provides linkages to retail, commercial, health, education and recreational facilities within the city.

Background

The Shepparton CBD Strategy 2008 made a number of key recommendations regarding connectivity to surrounding activity center nodes such as the Maude Street Mall, Shepparton Tertiary Education Precinct (STEP) and the Shepparton Railway Station. One conclusion cited the need to have a Masterplan for the Railway Precinct to better improve access and the necessity for a pedestrian overpass to link the station to Hoskin Street. The Master Plan was jointly funded by Council, DEDJTR, V/Line and VicTrack and prepared by Spiire Australia in May 2017. It was formally adopted at the Ordinary Council Meeting held on 20 June 2017. The plan is detailing the future upgrade of the railway precinct and how it can better function as a gateway to the CBD providing linkages to the retail, commercial, health, education and recreational facilities.

Railway Pedestrian Overpass

Council is currently undertaking detailed design works in partnership with VLine, VIC Track, Transport For Victoria and Public Transport Victoria for the provision of a pedestrian overpass to connect the station platform to Hoskin Street. This pedestrian overpass may incorporate an elevator providing all-abilities access, take account of existing infrastructure at the station and the redevelopment envisaged in the Master Plan. These works will realise one of the key recommendations made in the Shepparton CBD Strategy 2008. Cost: \$10 million

Connections Shepparton Railway Station

- A shared path to provide an off-road connection for pedestrians and cyclists between the Shepparton Railway Station and the new Shepparton Art Museum (SAM) at Victoria Park Lake is planned. The path will run along the western side of Purcell Street, continue via the northern side of Sobraon Street, the western side of Baker Street, then traverse Hayes Street to the southern side of Hayes Street to Wyndham Street / Goulburn Valley Highway and will connect into the shared path network at Victoria Park Lake.
- Enhanced pedestrian linkage such as footpaths with shade plantings between the Shepparton Railway Station along the western side of Purcell Street and St Georges Road to High Street, continue along the southern side of High Street to the CBD (Maude Street Mall). Cost: \$4 million

Shepparton Station Waiting Area Upgrade

VicTrack is delivering the Road and Rail Minor Works Program, which will improve access to stations and transport assets, and enhance customer service experience across Victoria's regional public transport network. Under this program, the Shepparton Station customer service and waiting area will be modernised to better support the growing number of people, train and coach services at the station.

CURRENT COMMITMENT

Station upgrade as part of works associated with passenger rail project.

STILL REQUIRED

Commitment to pedestrian overpass and precinct connections.

INVESTMENT ASK

Federal Government	
State Government	\$10M + \$3.5M
Greater Shepparton City Council	\$500,000
Private	
Total	\$14M



4 SHEPPARTON SPORTS & EVENT CENTRE

Greater Shepparton as the sporting mecca of regional Australia is committed to complete the final stage of the Shepparton Sports City precinct with the redevelopment of the existing sports stadium. Doing so will see the creation of a multipurpose sports and entertainment centre to service northern Victoria and beyond.

Background

The Shepparton Sports Stadium opened in 1972 and was extended in 1994. The facilities currently include:

- Four indoor courts
- Multipurpose room
- Amenities
- Administration space
- 2,000 seats

Whilst Council maintains the current Sports Stadium to a high standard with regular investment, the current four court configuration is constrained in terms of court availability for growing associations, spectator seating and multi-use capability. Increasingly, compliance with state sporting association regulation is also an issue.

CURRENT COMMITMENT

Basketball Victoria have nominated this project as one of their highest priorities for Victoria.

STILL REQUIRED

It is proposed to not only upgrade existing facilities at the stadium but to create a regionally significant sporting, entertainment and events complex that caters for a multitude of users.

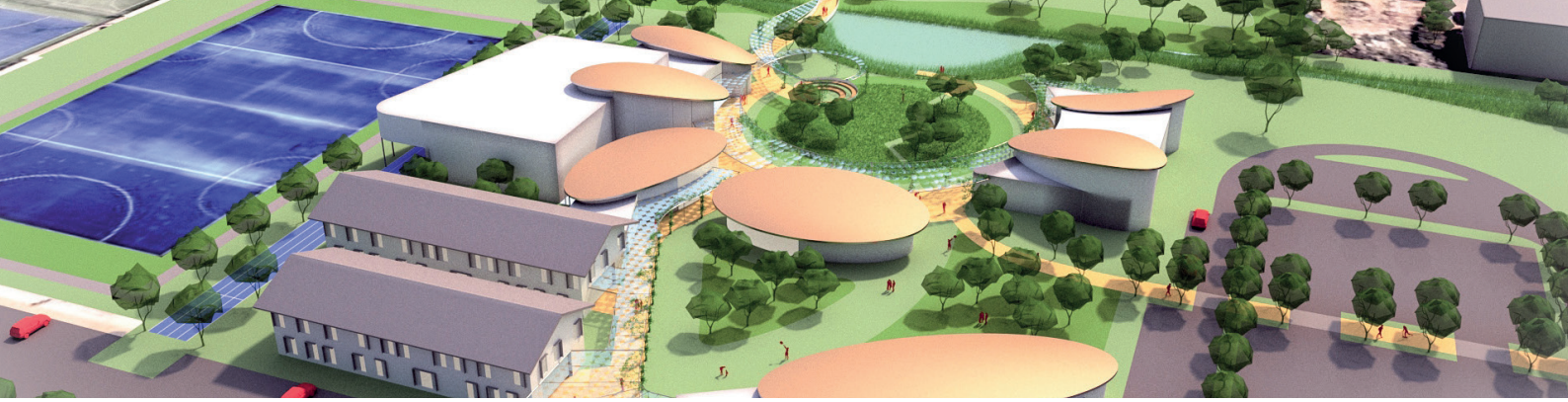
The full redevelopment at a cost of \$58 million includes:

- Four additional basketball/netball/ multi use courts including a show court with seating for up to 3,000.
- Inclusion of eight multipurpose squash courts and additional two court multipurpose space.
- Inclusion of a sports house/ administration space for stadium and other sporting users.
- Refurbished as well as new change rooms with the capacity and flexibility to cater for males, female and gender fluid sporting players/teams and officials.
- Family friendly and accessible (including 'changing place') change rooms for visitors with mobility and special needs.
- Flexible moveable staging (approximately 10m x 8m) including stage lighting, curtains and sound.
- Entry, lobby, café, reception, car park and external works.
- Access roads, pedestrian footpaths and crossings, bicycle parking, bus drop-off and crossovers, and car parking.

Additional stages would include a fourth multipurpose court, squash courts, additional amenities and a further two court flexible space. It is proposed that the project will be delivered in three stages subject to funding availability.

INVESTMENT ASK

Federal Government	\$18.5M
State Government	\$15.5M
Greater Shepparton City Council	\$3M
Private (Greater Shepparton Basketball Association)	TBC
Total	\$37M



5 MUNARRA CENTRE FOR REGIONAL EXCELLENCE (MCRE)

The Munarra Centre of Regional Excellence will be a major cultural hub, bringing together Aboriginal and non-Aboriginal communities through sport, culture and education.

Background

The MCRE is planned as a 'state of the art' purpose-built educational, sporting, cultural and community Centre of Excellence, comprising a campus for excellence in sports, health sciences and education where Aboriginal culture is embedded across all curriculum and programs.

It will have a strong emphasis on improving education and economic participation for Aboriginal community members. MCRE will provide expanded opportunities for Aboriginal youth while also serving the wider Victorian sporting community and improving its commercial viability.

The MCRE proposal is a partnership comprising Rumbalara Football Netball Club (RFNC), the University of Melbourne's Academy of Sport, Health & Education (ASHE) and Greater Shepparton City Council.

CURRENT COMMITMENT

Greater Shepparton City Council has agreed to lease land for the development of the MCRE, incorporating ASHE, on a site designated in the Shepparton Sports Precinct Master Plan.

A \$200,000 business case was funded in the 2017/18 State Government budget, with a further \$23 million being committed for the development of Stage 1 of the Munarra Centre in the 2018/19 budget cycle.

STILL REQUIRED

Confirmation from partners to commit resources to next stage.

INVESTMENT ASK

Federal Government	Stage 2 TBC
State Government	\$23M + Stage 2 TBC
Greater Shepparton City Council (Land Allocation)	\$2M
Private (University of Melbourne)	TBC
Total	\$56M



6 GV LINK STAGE ONE

A thriving transport and logistics hub located within the heart of Victoria’s Goulburn Valley food bowl is now taking shape which will see a more efficient supply chain for regional products to market, reduced congestion on roads into and around Melbourne and direct rail access to the Port of Melbourne.

Background

GV Link is planned for development on 331ha of land at 250 Toolamba Road, 2km south of the Midland Highway in Mooroopna. GV Link is strategically located at the junction of two major freight routes, Goulburn Valley Highway and Midland Highway, that service Victoria’s Food Bowl and Southern NSW. The Nagambie Bypass (located on the Goulburn Valley Highway) and the proposed Shepparton Bypass (the alignment of which runs through the GV Link site) will further boost access to markets for freight transporters in the longer-term.

The rail terminal at Mooroopna provides broad gauge access for business in the area and will support the development of a dedicated rail terminal at GV Link, providing direct rail access to Melbourne and other major markets.

CURRENT COMMITMENT

Land purchase complete and rezoning complete. GV Link is being developed as a multi-stage yet highly integrated construction project. Detailed design plans for Stages One to Three have been completed detailing the construction of the project:

STILL REQUIRED

Stage One

A general freight and logistics area comprising four allotments.
Cost: \$20 million

Stage Two

An additional freight and logistics area comprising five allotments.

Stage Three

A true intermodal terminal connecting GV Link tenants to streamlined road transport access and a high capacity, modern inland rail port.

For more information please go to:

<http://gvlink.com.au/>

INVESTMENT ASK

Federal Government	\$10M
State Government	\$7M
Greater Shepparton City Council	\$3M
Private	
Total (Stage 1)	\$20M



7 LA TROBE UNIVERSITY SHEPPARTON CAMPUS BUILDING EXTENSION

Over the last 10 years, the La Trobe Shepparton Campus has attracted a 160% increase in student numbers and following the addition of four popular new courses in 2017 further rapid growth is expected. The campus size is currently inadequate to cope with the enrolments for 2018 and the projected 48% increase in demand over the next five years. The new courses will have enrolments at all year levels, and the Bachelor of Nursing is in high demand by prospective students. In addition, the lack of a dedicated library and learning/study spaces is insufficient to meet student needs.

Background

La Trobe University Shepparton campus plays a vital economic, educational, social and cultural role in its community and has been established since 1994. The Shepparton campus currently graduates about 140 students per year, with over 70% commencing work in regional Victoria. Research shows that each graduate contributes approximately \$104k to gross regional production in their first year after graduation. Degree courses offered at the campus are based around the professional workforce needs of our region, including Nursing, Social Work, Allied Health, Early Childhood and Primary Education, Arts, Accounting, Business and Agribusiness.

Building Extension

1. Extend the existing building south (four levels):
 - Two lower floors for La Trobe University to use and,
 - Two further floors as cold shell, to accommodate La Trobe University's growth, and for future business, research and education partners. Cost: \$17 million

2. Erect a three level multi deck car park on the La Trobe University site, for use by La Trobe University and GOTAFE. Cost: \$4.1 million

The construction phase

Output – Business outputs/turnovers of \$47 million.

- Employment – Supporting 83 jobs during peak construction activity
- Value-added – \$17 million of value-added to the Greater Shepparton economy.

The operational phase

The Output – Increase in business outputs/turnovers of \$10 million

- Employment – Supporting an additional 49 direct and indirect jobs across the region
- Wages and Salaries - Increase in wages and salaries of \$5 million

Value-added

\$7 million of value-added to the Greater Shepparton economy operational phase.

CURRENT COMMITMENT

Greater Shepparton City Council \$300,000
 La Trobe university \$5.3 million

STILL REQUIRED

Funding from Federal and State Governments to undertake campus building extension.

INVESTMENT ASK	
Federal Government	\$10.7M
State Government	\$5.1M
Greater Shepparton City Council	\$300,000
Private (LaTrobe University)	\$5.3M
Total	\$21.4M



8 A: GOULBURN VALLEY HEALTH 8 STAGE TWO REDEVELOPMENT

Goulburn Valley Health (GV Health) provides regional health service for 250,000 residents including southern NSW. Inability to meet growing regional demands is placing pressure on service delivery. GV Health is committed to the provision of the best possible health care facilities and services to its community.

CURRENT COMMITMENT

Funding of \$169 million was provided in the 2016/17 State Budget to undertake Stage One redevelopment of this critical service. Redevelopment works are now underway and is due to be completed by 2020.

STILL REQUIRED

The current hospital site contains several different buildings constructed across a number of decades as limited funding did become available. The current ad hoc site is spread across a vast space with many buildings that are no longer fit for purpose.

- Allied Health
- Education Centre
- Inpatient units - rehabilitation
- Medical Imaging
- Pathology
- Retail precinct
- Specialist consulting clinics
- Inpatient Mental Health
- Administration Offices
- Helipad
- Inpatient units - medical beds
- Library
- Main Entry
- Pharmacy

It is central to be able to provide integrated cancer services within northern Victoria. Service planning is being undertaken by the Department of Health and Human Services to assess what the Integrated Cancer Centre services need to include:

- A PET/CT planning and diagnostic suite
- Chemotherapy day treatment areas
- Overnight accommodation
- Car parking
- Consulting suites
- Radiotherapy bunkers

Dependant on the services deemed to be necessary, the Integrated Cancer Centre project could total up to \$70 million and will include private partnerships.



INVESTMENT ASK

Greater Shepparton is seeking investment parity with other large regional centres in relation to the health services and associated infrastructure. To date health funds has been disproportionately distributed across large regional centres within Victoria.

Federal Government

State Government

TBC

Greater Shepparton City Council

Private

TBC

Total

TBC



8 B: GOULBURN VALLEY HEALTH CORIO STREET CAMPUS

Goulburn Valley Health is committed to enhancing the services provided within the Goulburn Valley/ Upper Hume region. As part of the Regional Health Infrastructure Fund applications GVH is seeking to increase the hospitals community footprint by redeveloping and refurbishing the existing Community Health building in Corio St, thereby establishing a Health Precinct. This concept is supported by the GVH Board and the Greater Shepparton City Council. The Health precinct proposal would allow extension and some refurbishment of the Corio Street facilities and allow for future proofing of community health services in the Greater Shepparton area.

Background

Goulburn Valley Health operates a range of services at its Corio Street site and other sites throughout Shepparton including some community services such as the CAMHS service which are located within the GVH inpatient facility.

This redevelopment would allow for CAMHS and other complementary services to be located in an appropriate community setting. Other Allied health services currently located at GVH and would be better provided in a community setting include Audiology, Victorian Paediatric Rehabilitation service and other allied health services including outpatients Podiatry, Speech Pathology and other outpatient services.

The drivers include providing client centred care at an accessible, fit for purpose location where there are synergies in service delivery as well as staffing. The current location of the CAMHS service is one example of the service being delivered in an inappropriate location,

not fit for purpose, difficult to access, not located with other like services. Further operational efficiencies would be gained by reducing the number of other sites, reducing the numbers of fleet cars, combining like roles (receptionists for example) and the reduction of buildings and other associated on going costs such as leasing, energy costs and maintenance. Moving some services from the acute inpatient setting will also allow additional space to be utilised on the acute site, where space is at a premium currently.

Current services at Corio St include Home nursing, community interlink, The Community Health Team is made up of Allied Health and Nursing Clinicians who provide a range of primary care services including counselling/ social work, dietetics, sexual health nursing, occupational therapy, podiatry, physiotherapy and speech pathology. The community interlink program provides early childhood programs, acquired brain injury programs and disability support programs.

This redevelopment would allow for growth in services provided from a community setting included drug and alcohol services.

Application for funding \$15M Federal, \$15M State

CURRENT COMMITMENT

Purchase of the Hunter's Building and consolidation of services within the CBD.

STILL REQUIRED

Funding to redevelop and refurbish the Corio Street site, establishing a Health Precinct.

INVESTMENT ASK

Federal Government	\$15M
State Government	\$15M
Greater Shepparton City Council	
Private	
Total	\$30M