

ATTACHMENT TO AGENDA ITEM

Ordinary Meeting

17 December 2013

Agenda Item 8.2 Off Leash Dog Park

Attachment 1 Off Leash Dog Park - Options for Consideration..... 347

OFF LEASH DOG PARK

Options for Consideration

Investigations to date have centred on possible sites within and adjacent to the City of Shepparton where the dog population is greatest.

A suggested criteria for the investigation of short term trial sites has been formulated as follows:

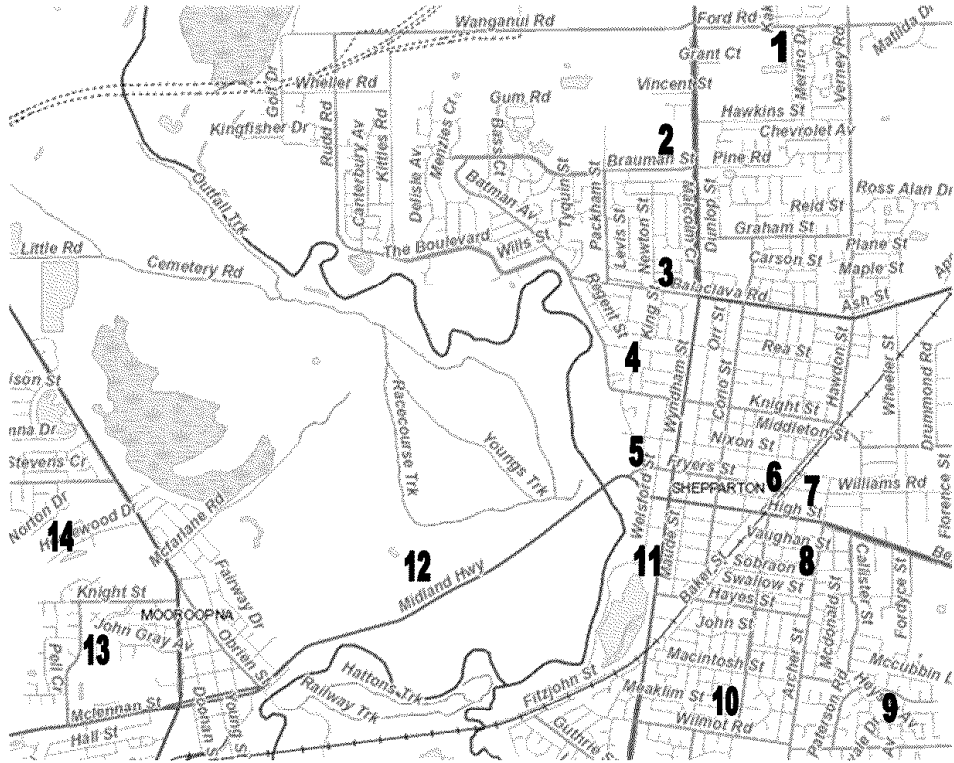
- Some fencing of site, preferable
- Access to water an advantage
- Site easily patrolled by Council Officers
- Site has safe access
- Some adjacent car parking be available

This report sets out a number of options for consideration in selecting a site for the trial of an off leash dog park.

The following sites have been considered:

1. Ford Road, Shepparton
2. John McEwan Reserve, Brauman Street, Shepparton
3. Sherbourne Reserve, Balaclava Road, Shepparton
4. Mason Street, Shepparton
5. Goyen Reserve, Shepparton
6. Railway Parade, Shepparton
7. Shepparton Showgrounds
8. Karibok Park, Shepparton
9. Ducat Reserve, Paterson Road, Shepparton
10. Wilmot Road, Shepparton
11. Victoria Park Lake, Shepparton
12. Kids Town, Mooroopna
13. Mooroopna Recreation Reserve
14. Norton Park, Mooroopna

Council also has the option to do nothing.



1. Ford Road, Shepparton

Advantages	Disadvantages
Very large undeveloped site owned by Council	Purpose of site is for residential development
Site partly fenced	
Site easily patrolled	
Access to water – possible	
Car parking can be accommodated	
Site not subject to inundation	

Not a suitable off leash dog park site.

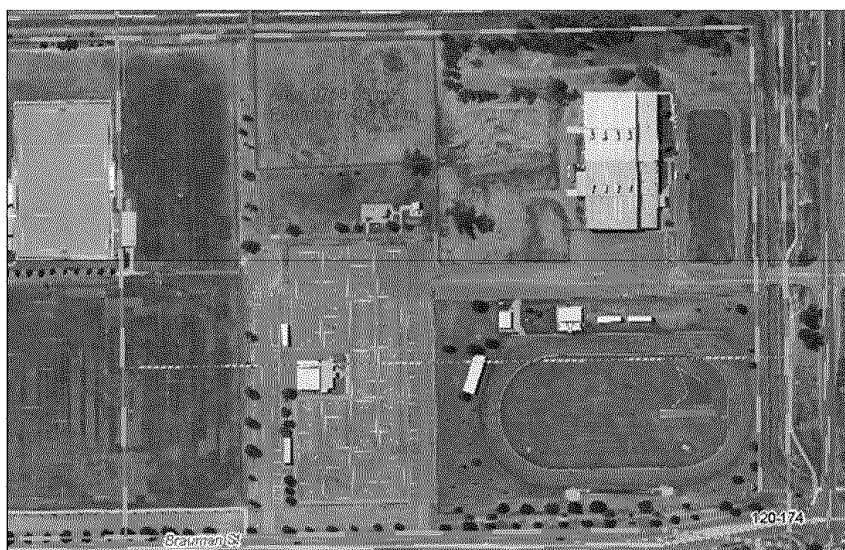


2. John McEwan Reserve, Brauman Street, Shepparton

Advantages	Disadvantages
Large 9,800m2 site	Safety – part of recreation Complex
No residential properties in the area	The land is subject to inundation
Site easily patrolled	Off leash dog park or playground area would need to be fenced
Access to water – possible	
Car parking is available nearby	

Not a suitable off leash dog park site. This 9,800m2 site could be utilised as a trial site however is not considered a suitable long term option due to development of the Sporting Precinct.

The Velodrome has also been raised as possibly suitable as an off leash dog park however the hours and access would need to be heavily regulated to avoid conflict between types of use.



3. Sherbourne Reserve, Balaclava Road, Shepparton

Advantages	Disadvantages
Streets provide a buffer to residential properties	Fencing required due to proximity to Balaclava road and Wyndham Street
Access to water – possible	
Site easily patrolled	
Some car parking is available nearby	
Site is not subject to inundation	

Suitable fenced off leash dog park site.



4. Mason Street, Shepparton

Advantages	Disadvantages
Large 8,000m2 area	Site was not established for the purpose of an off leash dog park
Surrounding properties provide a buffer to residential properties	Mix of grassed, paths and semi wooded and shrubbed spaces
Not a lot of open space	Site is partially subject to inundation
Access to water – possible	Status and history of adjoining GV Water site to be confirmed
Car parking is available	

Suitable unfenced off leash dog park site.



5. Goyen Reserve, Shepparton

Advantages	Disadvantages
Large 6,000m ² area	Site is part of the urban floodway
No surrounding residential properties	Rain affected after minor rain
Access to water – possible	Adjoining recreational facilities
Car parking is available	

Not a suitable off leash dog park site.



6. Railway Parade, Shepparton

Advantages	Disadvantages
Road provides a buffer to residential properties	Area is only 15 metres wide
Site easily patrolled	Additional fencing required due to height of current fencing and proximity to Railway Parade
Access to water – possible	Access to water – unknown
Some car parking is available nearby	Property is leased by SPC Ardmona from V/Line.
Site is not subject to inundation	

Not suitable fenced off leash dog park site.



7. Shepparton Showgrounds

Advantages	Disadvantages
Large area 26,000m ²	Use as an off leash area would conflict with events currently booked for this venue
Boundary fencing is in place	Showgrounds currently locked 24/7
Access to water – available	Potential damage to upgraded grassed area
Car parking is available	
Site easily patrolled	
Site is not subject to inundation	

Not a suitable off leash dog park site.



8. Karibok Park, Corner Archer and Vaughan Street, Shepparton

Advantages	Disadvantages
Large 8,000m2 reserve	Off leash dog park would need to be fenced due to proximity to Archer Street
Streets provide a buffer to residential properties	
Site is not subject to inundation	
Site easily patrolled	
Access to water – possible	
Car parking is available nearby	

Suitable fenced off leash dog park.



9. Ducat Reserve, Paterson Road, Shepparton

Advantages	Disadvantages
Large 20,000m ² site would provide a buffer to surrounding residential properties	Playground or off leash dog park would need to be fenced
Site easily patrolled	The land is subject to inundation
Access to water – possible	Potential conflict with existing community use
Some car parking is available nearby	

Suitable unfenced or fenced off leash dog park trial site.



10. Wilmot Road, Shepparton

Advantages	Disadvantages
Existing fencing on three sides	Site only 2,600m ²
Site easily patrolled	Surrounded by residential properties
Access to water – possible	The land is subject to inundation
Some car parking is available nearby	Potential conflict with existing community use
	Fencing required on street frontage

Not a suitable off leash dog park site.



11. Victoria Park Lake, Corner Wyndham and Sobroan Street, Shepparton

Advantages	Disadvantages
Streets provide a buffer to residential properties	The land is subject to inundation
Site easily patrolled	Off leash dog park would need to be fenced due to proximity to Wyndham Street
Access to water – possible	Off leash dog park would conflict with community events
Car parking is available nearby	

Not suitable for an off leash dog park.



12. Kids Town, Mooroopna

Advantages	Disadvantages
Large 46,000m ² site	Safety – near Kids Town
No residential properties in the area	The land is part of the urban floodway.
Site easily patrolled	Site used for Kids Town car parking
Access to water – possible	Off leash dog park or playground area would need to be fenced
Car parking is available nearby	

Not suitable for an off leash dog park.



13. Mooroopna Recreation Reserve

Advantages	Disadvantages
Large area 8,000m ²	Site is part of urban floodway
Site easily patrolled	Adjoining residential properties
Access to water – possible	Nearby recreational facilities
	Playground would need to be fenced.
	Car parking is not available nearby

Not a suitable off leash dog park site.



14. Norton Park, Mooroopna

Advantages	Disadvantages
Large reserve provides a buffer to residential properties	The land is part of the urban floodway.
Site easily patrolled	Off leash dog park or playground area would need to be fenced
Access to water – possible	
	Car parking is not available nearby

Not suitable for an off leash dog park.



Temporary Fencing Proposal

The fencing proposed is as pictured with the orange feet sunk into the ground to deter dogs from escaping beneath the fence.

