

# Shepparton Sports City Master Plan 2022 Update

6 July 2022



90 Welsford St, Shepparton  
Victoria 3630  
p. 58329700



Ground Floor 143 Franklin Street  
Melbourne Victoria 3000  
p. 9329 6844 f. 9329 6336  
e. office@urbaninitiatives.com.au



Office 1, 655 Nepean Highway  
Brighton East Victoria 3187  
M 0458 957 824  
E richard@simonleisure.com

W [www.simonleisure.com](http://www.simonleisure.com)

*We, Greater Shepparton City Council,  
acknowledge the Yorta Yorta Peoples of the land  
which now comprises Greater Shepparton. We  
pay respect to their tribal Elders, we celebrate  
their continuing culture and we acknowledge the  
memory of their ancestors.*



# CONTENTS

<b>1</b>	<b>Introduction</b>	<b>4</b>			
1.1	Background	4			
1.2	2022 Master Plan Update	6			
1.3	Site Planning Principles	6			
1.4	Status of Master Plan Implementation	7			
1.5	Greater Shepparton Community Profile	8			
<b>2</b>	<b>Planning Context</b>	<b>9</b>			
2.1	Literature Review	9			
2.2	Greater Shepparton Secondary College	9			
2.3	Munarra Regional Centre of Excellence	10			
<b>3</b>	<b>Existing Conditions</b>	<b>11</b>			
3.1	Shepparton Sports Stadium	11			
3.2	Athletics Precinct	12			
3.3	Netball Precinct	12			
3.4	Multipurpose Fields	12			
3.5	McEwen Reserve Tennis Facility	13			
3.6	Hockey Precinct	13			
3.7	Cycling Precinct	14			
3.8	WB Hunter Reserve	14			
3.9	Soccer Precinct	15			
3.10	Traffic, Parking & Pedestrian Connections	16			
3.11	Landscape and Tree Planting	17			
<b>4</b>	<b>Community Consultation</b>	<b>18</b>			
4.1	Sports City User Groups	18			
4.1.1	General	18			
4.1.2	Soccer	19			
4.1.3	Hockey	19			
4.1.4	Stadium Sports	19			
4.1.5	Athletics	19			
4.1.6	Netball	19			
4.1.7	Tennis	19			
4.1.8	Cycle Sports	19			
4.1.9	Equestrian	19			
4.2	Other Stakeholder Groups	20			
4.2.1	Valley Sport	20			
4.2.2	AFL Goulburn Valley	20			
4.2.3	Department of Education & Training (DET)	20			
4.2.4	Rumbalara Football Netball Club	20			
4.2.5	Munarra Centre for Regional Excellence	20			
<b>5</b>	<b>Master Plan Update 2022</b>	<b>21</b>			
5.1	The 2022 Review	21			
5.2	Issues & Opportunities	21			
5.3	Sustainability Initiatives	22			
5.4	Accessibility	22			
5.5	Master Plan Update Adoption	22			
5.6	Sports City Master Plan 2022 Update	23			
5.6.1	Precedent Images	24			
5.7	Sports City Master Plan 2022 Update: Stadium, Netball and Athletics Precincts	25			
5.7.1	Precedent Images	26			
5.7.2	Shepparton Netball Centre alternative layout	27			
5.7.3	Stadium Sports Proposed Development	28			
5.8	Sports City Master Plan 2022 Update: Hockey and Tennis Precincts	30			
5.9	Sports City Master Plan 2022 Update: Soccer Precinct	31			
5.9.1	Precedent Images	33			
5.10	Sports City Master Plan 2022 Update: Equestrian and Cycling Precincts	34			
5.10.1	Precedent Images	35			
5.11	Consolidated List	36			
<b>6</b>	<b>Appendix</b>	<b>37</b>			
6.1	Literature Review	37			
6.1.1	Greater Shepparton 2030 Plan	37			
6.1.2	Greater Shepparton Council Plan 2021-2025	37			
6.1.3	Draft Sport 2050 Strategic Plan (2021)	37			
6.1.4	Greater Shepparton Whole of Sport Plan Cricket (2017)	38			
6.1.5	Greater Shepparton Whole of Sport Plan Tennis (2017)	38			
6.1.6	Shepparton Cycling Precinct Master Plan (2015)	38			
6.2	Stakeholder Consultation Summary Report	39			

# 1 INTRODUCTION

## 1.1 Background

The Greater Shepparton Area is one of country Victoria’s leading sporting centres, and a wide range of indoor and outdoor sport facilities and opportunities are offered through the region. The largest and most significant of the Greater Shepparton’s sporting facilities is the Shepparton Sports City located off Parkside Drive, three kilometers north of Shepparton’s CBD.

Previously called the Shepparton Sports Precinct, the re-branded Sports City is at the northern gateway to the city and it is passed by most visitors to Shepparton travelling north or south along the Goulburn Valley Highway.

Initially called McEwen Reserve named after the then Deputy Prime Minister and local member John McEwen, the Reserve was conceived around 1970 and the first stage was the development of the indoor stadium which was designed to cater for basketball, badminton and table tennis with spectator capacity of 600. This building was officially opened in 1972.

The Shepparton Sports City now covers an area of approximately 64 hectares, incorporating McEwen (23ha) and Hunter Reserves (17ha and additional land purchased by Council since 1998 to the north linking the site to Wanganui Road, an important future road link. This study also considers the Rumbalara Aboriginal Co-operative site (Mercury Drive Sporting Complex) with its excellent football and community facilities, while they are not directly managed by Council.

Overall the Sports City now accommodates a multitude of sporting and club facilities, which currently include:

- Netball
- Tennis
- Hockey

- Athletics
- Cycling
- Soccer
- BMX
- Equestrian
- Cricket
- Touch football
- Football
- Baseball
- Radio controlled cars
- Sports Stadium – Basketball, Badminton,
- Table Tennis

Development of the reserve over time has been on an as need basis. This factor together with the various land exchanges, and limited funds has resulted in an ad-hoc arrangement of disconnected sporting fields, courts and individual parking provision for each sport.

In 1998 the Council adopted an internally developed master plan for John McEwen Reserve which was intended to guide key infrastructure developments in a coordinated, need based manner.

In December 2002 an additional report was prepared by the Manager of Leisure Services, which outlined ‘the progress to date in regards to the implementation of the master plan’, as well ‘proposed operational, management and capital works priorities for the future of the precinct.

In the years following the 2002 report, expansion of user numbers, new user groups, revised agendas and future council land acquisition has led to significant pressure to review the previous master plan, and establish an optimal concept for the whole Sports City complex, which allows for and guides future development opportunities.

In 2012, following completion of the

Shepparton Sports Precinct Master Plan in 2007, Greater Shepparton City Council’s (GSCC) Council Plan 2009-2013, identified a specific objective to “Develop and promote the Shepparton Sports Precinct as a significant regional Victorian multi-sport complex”.

In 2012 Urban Initiatives was re-engaged by Greater Shepparton City Council, to coordinate the Master Plan layout requirements that have resulted through further site investigation and program planning.

The objective to develop Sports City into a regional complex is no longer included in the 2021-2025 GSCC Council Plan, however, contained within the Shepparton & Mooroopna 2050 – Regional City Growth Plan (July 2020), the following is noted:

- Outcome 4 – A City with Infrastructure and Transport (p. 42) - Community Hubs section which notes the specific need for the following:
  - Future development of community hubs should be designed so they can adapt and respond to changing community needs over time. Integrating shared spaces, multipurpose community rooms, community services, sport and recreation and should consider integration of other infrastructure such as a primary school. Community hubs should be accessible after hours and contain flexible spaces to adapt to changing demographic needs in the community over time.

In 2021-22, Shepparton City Council engaged Urban Initiatives and Simon Leisure to undergo a master plan refresh and update (this document) for the Shepparton Sports City.





Fig. 1 2022 Site Plan

## 1.2 2022 Master Plan Update

The current Shepparton Sports Precinct Master Plan was endorsed several years ago and a number of the recommendations have been completed or are no longer valid.

The purpose of this project is to review and update the Shepparton Sports Precinct Master Plan and provide a comprehensive and prioritised plan for the future development of the precinct. The review will also consider the significant change in sporting facilities located nearby and the change in sports use and demand across the municipality.

The decision to complete a review and update of the Shepparton Sports City Master Plan has been driven by the following needs:

1. To provide strategic guidance for the future development of the Shepparton Sports City at a holistic level.
2. To better respond to changing demographics, participation trends, and the needs of residents and visitors; and to address issues such as gender equality, accessibility and sustainability.
3. To better respond to State Sporting Associations in relation to the provision of sport and recreation opportunities, including the assessment of current and future needs of members.
4. To address impacts and opportunities from the current facilities and Master Plan.

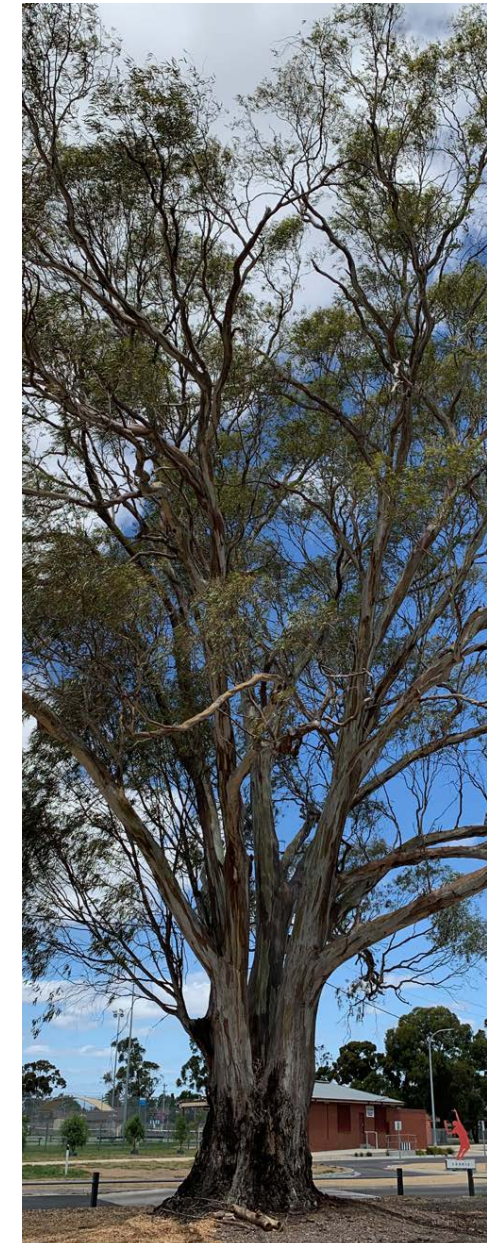
## 1.3 Site Planning Principles

The following site design principles (1-8) were developed for the 2007 master plan and remain applicable to this review. Additional principles have been added (9-16) to reflect the updated Sport 2050 Strategic Plan and current community needs and requirements:

1. The site should be legible for visitors.
2. The plan should anticipate growth for existing user groups.
3. The site should be planned to encourage walking between all facilities
4. Car parks should be attractive and capable of being shared by other user groups.
5. New toilet, social and administrative facilities should be designed for shared use by a maximum number of user groups.
6. New buildings should be well designed and durable with sustainable design.
7. Enclosure of sporting areas is to be discouraged with the exception of high-level fields that depend on revenue collection. In these instances, enclosure should be limited to the immediate field or temporary enclosure of sections of the boundary on event days.
8. All areas should be developed with associated landscaping aimed at amenity, public safety and enhanced micro-climate.
9. All sporting facilities should be incrementally made accessible to people with a disability, all genders, and people of all cultural backgrounds.
10. Ensure that all facilities have adequate spectator and player seating, shelter and shade, and have amenities that support women's sport.
11. Sports facilities with multiple playing fields and courts, and those created as

a sporting hub with other community facilities will be more viable, and more easily able to be maintained to a higher quality than others.

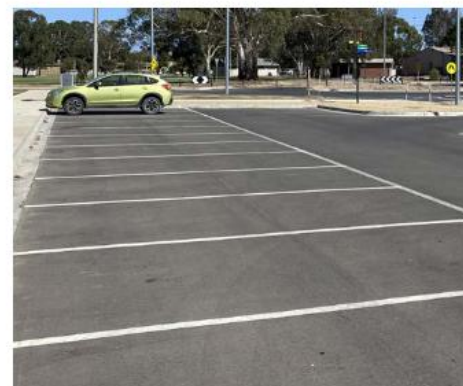
12. The ability for the various facilities to be used for many different levels of competition is important to ensure sufficient activation of the facility occurs.
13. Multi-use of facilities are strongly encouraged, and 'smaller' sports will be actively encouraged to share facilities with larger sports to ensure better utilisation of facilities.
14. Shepparton Sports City precinct should continue to primarily cater to higher levels of competition sport.
15. Council's investment in sport facilities will give priority to maximising and supporting participation numbers and rates, more so than increasing the number of sporting codes available to the community.
16. Climate adaption actions should be integrated within improvements to Shepparton Sports City which support Council's 2030 zero emissions target for council operations.



### 1.4 Status of Master Plan Implementation

Since 2013, the following Shepparton Sports projects have been completed:

- Main Hockey field
- Multi-purpose synthetic field with lighting
- Community Football Complex (all turf fields north of Murray Slee) including sports lighting
- Small Pavilion
- Main Pavilion
- Road network
- 15 Netball courts with lighting
- Synthetic Athletics track including D area
- Public street lighting
- Stormwater upgrade
- Retention basin
- Upgrade sewer pumping station
- Upgrade power supply to precinct
- Associated car parking facilities
- Footpaths and shared path network



### 1.5 Greater Shepparton Community Profile

The City of Greater Shepparton has a population of 67070 as of 2020. The townships of Shepparton is a regional centre that provides various services to residents in the regional area.

According to the 2016 Census, 3.4% have identified as Aboriginal and Torres Strait Islander, which is higher than the regional Victoria's 1.6% and Victoria's 0.8% averages.

The total number of overseas-born in Great Shepparton is 14.8%, and Italian, Arabic, Persian/Dari, Punjabi and Turkish are the most spoken languages at home.

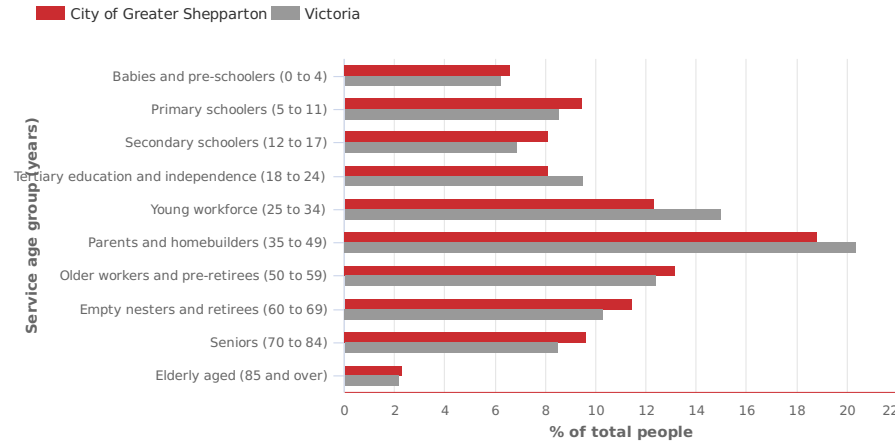
While Greater Shepparton has a younger age structure compared with regional Victoria, the population is getting older between 2011-2016. In comparison to regional Victoria, the dominant age groups in Greater Shepparton are the young workforce and babies and pre-schoolers, and the emerging groups are the empty nesters and retirees and seniors. See charts below for age structure data from the 2016 census.

The total number of people needing assistance with core activities is 6% of the population, which is the same as regional Victoria but higher than the whole of Victoria's 5.1%.

The residents of Greater Shepparton predominantly travel to work by car as a driver, with 71.2% in comparison to 67.1% of regional Victoria and 61.8% of Victoria.

#### Age structure - service age groups, 2016

Total persons

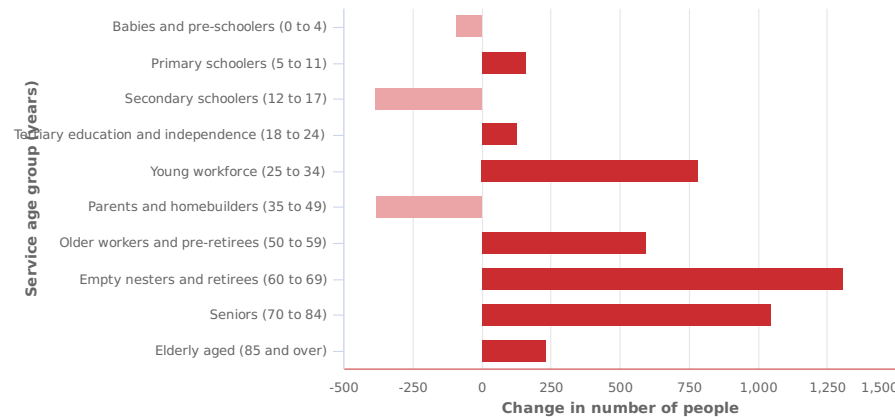


Source: Australian Bureau of Statistics, Census of Population and Housing, 2016 (Usual residence data). Compiled and presented in profile.id by .id (informed decisions).



#### Change in age structure - service age groups, 2011 to 2016

City of Greater Shepparton - Total persons



Source: Australian Bureau of Statistics, Census of Population and Housing, 2011 and 2016 (Usual residence data). Compiled and presented in profile.id by .id (informed decisions).



Fig. 2 2016 Census age structure data adopted from Id.com.au



## 2 PLANNING CONTEXT

### 2.1 Literature Review

The following reports and strategies provided important context, background and direction during the Shepparton Sports City Master Plan Review:

- Greater Shepparton 2030 Plan
- Greater Shepparton Council Plan 2021-2025
- Sport 2050 Strategic Plan (2021)
- Greater Shepparton Whole of Sport Plan Cricket (2017)
- Greater Shepparton Whole of Sport Plan Tennis (2017)
- Shepparton Cycling Precinct Master Plan (2015)

The key directions from the plans and strategies relevant to Shepparton Sports City are summarised in “6.1 Literature Review” on page 37 of this document.

### 2.2 Greater Shepparton Secondary College

The development of the Shepparton Education Plan began in 2017, with the vision of improving student outcomes by empowering all students to learn and achieve, experience high quality teaching and the best conditions for lifelong learning. The plan has focused on secondary schooling but is now evolving through all stages of education, including early years, primary school and pathways into higher education.

The first step toward the new school framework was to merge the four previous high schools onto one site, with one of the schools to merge being the Wanganui Park Secondary College which is located adjacent to Sports City. The other three sites are McGuire College, Mooroopna Secondary College and Shepparton High School. The Shepparton High School site is the location for Shepparton and Mooroopna’s new secondary school, the Greater Shepparton Secondary College.

The Department of Education and Training (DET) has determined that the Wanganui Park Secondary College site will be retained for other education purposes. The site contains a sports oval and the Visy Stadium, and the community’s use of these facilities outside of school hours will continue at this stage. The Goulburn Valley Woodworkers and the 1st North Shepparton Scouts also lease buildings on the school land, and their continued use of the facilities has also been approved.

An opportunity exists to continue to work with the DET to ensure the connections and linkages between the Wanganui campus and the broader Sports City precinct are strengthened, and that community access to the recreational assets is maintained.



### 2.3 Munarra Regional Centre of Excellence

The Munarra Regional Centre of Excellence (MRCE) is an indigenous-led sporting and education precinct in Shepparton. Working with partners Rumbalara Football and Netball Club (RFNC), the University of Melbourne, Kaiela Institute, the Greater Shepparton City Council, the Department of Environment, Land, Water and Planning and the Department of Premier and Cabinet, the project aims to create future opportunities for the Aboriginal population of the Goulburn Valley. With aboriginal knowledge embedded throughout its design and programs, the centre is planning to include the following developments soon:

- the Munarra Academy (An evolution of the existing Academy of Sport and Health Education (ASHE))
- a Munarra Administration hub, and
- an upgrade to the current RFNC facilities.

There are a few areas of synergy between the MRCE project and the Shepparton Sports City. MRCE will activate the area and a few pedestrian connections across the existing Drain 3 have been proposed. This will allow access to and from the Sports City to the RFNC facilities and the Mercury Drive entrance.

The new facilities in the Munarra Administration Hub, such as toilets and canteen, will provide better services for the visitors of the precinct and further coordination have been proposed.

It is expected that patrons of the MRCE will use the car parks within the Shepparton Sports City, and vice versa.

The City of Greater Shepparton welcomes the embedding of Aboriginal knowledge in the designs of its facilities and it will incorporate traditional owners' inputs within the Sports City, especially along the Numurkah Road frontage.

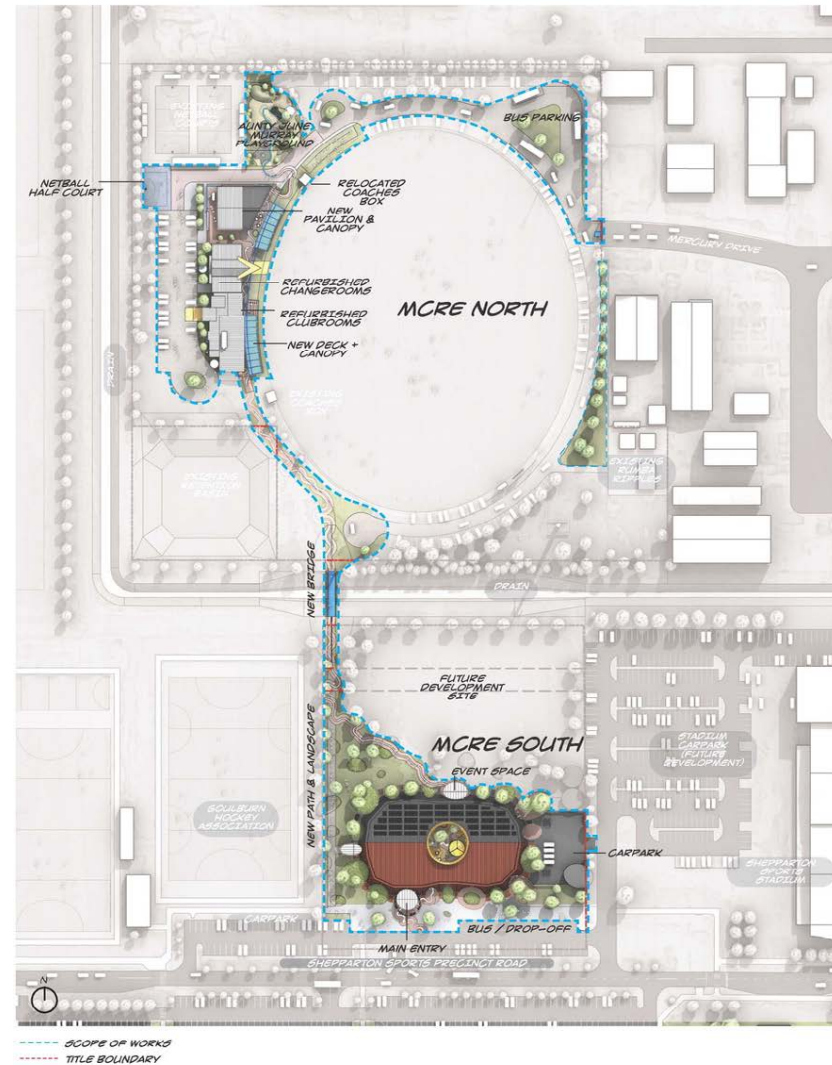


Fig. 3 Work-in-progress landscape master plan for the Munarra Regional Centre of Excellence (MRCE) (Adopted from Spiire)

### 3 EXISTING CONDITIONS

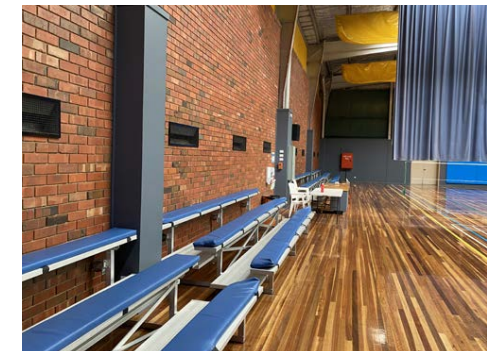
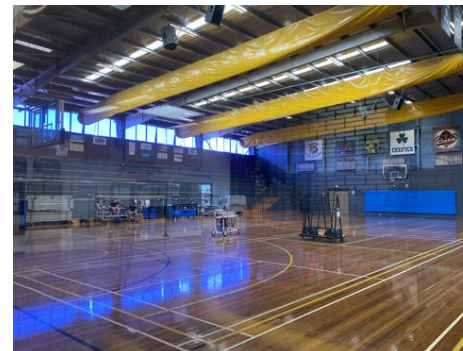
This section provides an overview of the existing sporting facilities, traffic management, and landscape amenity at Shepparton Sports City. A detailed review of the site by the project consultant team was conducted on 5 March 2021, with follow-up inspections conducted during user group meetings held 8 – 11 March 2021. The following summary of existing conditions also includes observations from Council staff and relevant reports, and from user groups.

#### 3.1 Shepparton Sports Stadium

The stadium is currently the subject of a major upgrade and extension project, and conversion into a new Shepparton Sports and Events Centre. The design development has occurred in parallel with the Sports City Master Plan Refresh study.

The stadium currently comprises 4 multipurpose courts, associated change rooms and amenities, an entry foyer and administration offices, a canteen, a meeting room, and a multipurpose room (used as the table tennis hall). There are several functional constraints and non-compliances that exist throughout the stadium, and the existing facilities are not meeting demand. These factors, and the need for a large functions and events centre in Shepparton have triggered the need for the stadium redevelopment project.

Sports currently serviced in the stadium are basketball (4 courts), netball (4 courts), badminton (16 courts), table tennis (6 courts), and volleyball (4 courts).



### 3.2 Athletics Precinct

The athletics precinct comprises a synthetic 400m track and field events areas (long & triple jumps, high jump, javelin, shot put and throwing cage), a combined public toilet/ change room building, clubroom/ store shed, and large equipment shed.

The athletics track was converted from grass to a polyurethane track in 2017. Unfortunately, several sections of the concrete edge around the outside of the track are failing, the track surface is discoloured, and there is significant damage to the track being caused by Corellas. The 110m hurdles has an alternate finish line painted 5 metres beyond the main finish line, as the starting and assembly area for this event was not provided for correctly. Notwithstanding this issue, the track has achieved IAAF Class 1 Certification.

There are some facility upgrades still to be completed, including:

- the installation of an aluminium running rail inside lane one
- the installation of fencing along the jumping run-ups and landing pits
- the installation of a steeplechase water jump, a pole vault run-up and pit, and a discus/ hammer cage at the east end

The current canteen and clubroom shed is inadequate, and these facilities could form part of a future extension and upgrade of the public toilet/ change room building. There is a lack of spectator shade and shelter around the facility, the perimeter fence is beginning to fail, and additional tree planting around the perimeter fence would help to frame the facility and provide some offset to the strong prevailing winds.



### 3.3 Netball Precinct

The netball precinct comprises 18 netball courts (17 asphalt, 1 acrylic), a pavilion, and two large storage sheds. All courts are in good condition, and are floodlit. The Association has identified that the only tree within the court area needs to be removed, as the leaf litter causes the courts to become slippery.

There are no permanent courtside player shelters, which is a core requirement in accordance with Netball Victoria's Facilities Manual (2017). The pavilion is also non-compliant in relation to its lack of player and umpire change rooms and amenities.

There is only limited spectator shelter available from the pavilion eaves, and additional courtside shelters should be considered. The perimeter fence is in good condition.



### 3.4 Multipurpose Fields

The Multipurpose field 1 and 2 are rectangular in shape, and can accommodate two full-size soccer pitches or a small oval. It has a natural grass surface in excellent condition, and is floodlit. The perimeter fence is in good condition.



### 3.5 McEwen Reserve Tennis Facility

The tennis facility comprises 12 acrylic tennis courts in two banks of six courts, a central spectator walkway between both banks of courts, and a pavilion.

There are several issues with the compliance and condition of the courts:

- The southern run-offs for all courts in the northern bank of courts are short: are 4.9m, required min. 5.49m (there is sufficient total area for compliant court run-offs)
- The northern run-offs for all courts in the southern bank of courts are short: are 5.2m, required min. 5.49m (there is sufficient total area for compliant court run-offs)
- There is cracking and staining across most of the courts, and delamination of the acrylic surface is beginning to occur. The courts appear to have insufficient fall across the surface, and there is a lack of formal drainage infrastructure around the courts
- All perimeter fencing is in fair to poor condition and needs to be replaced
- The lighting system is old and needs replacement or upgrading

The walkway is covered and contains bench seating, it is a good functional inclusion to the overall layout of the tennis facility.

The clubhouse is in fair condition, however, there are several DDA non-compliances, and many of the fixtures and fittings need upgrading or replacement.

The outdoor spectator and social space is in good condition. Whilst it is fenced, the perimeter fence could be removed to open-up the facility and to create a park space for the community.



### 3.6 Hockey Precinct

The hockey precinct comprises two synthetic surface hockey pitches, the Lorna Tingay Pavilion, a separate clubroom building, a separate old canteen now used for storage, and a covered and terraced spectator area adjacent to Pitch 1.

Both pitches have compliant dimensions (91.4m long x 55.0m wide), and are a floodlit, however, the floodlights on Pitch 2 have insufficient lux for competition. Pitch 2 was initially constructed as a multipurpose synthetic pitch for hockey and soccer use, but is not used for soccer. The current pitch surface is not a standard hockey surface, so when the surface needs to be replaced consideration should be given to re-surfacing the pitch with a specific hockey surface.

The Lorna Tingay Pavilion provides the change rooms for the hockey precinct, and is inadequate when two games are being played concurrently on both pitches, as the pavilion only has two change rooms. The condition of the pavilion is fair, and needs upgrading as well as extending to provide an additional set of change rooms.

While the new canteen has been incorporated into the clubroom building, the user groups indicated that clubroom building is already too small to cater for the social and operational needs of the clubs and the Goulburn Valley Hockey Association.



### 3.7 Cycling Precinct

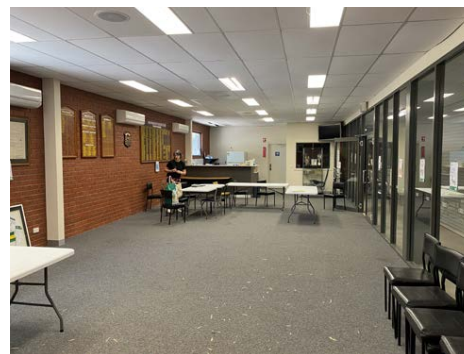
The cycling precinct comprises a velodrome for track cycling and an international standard BMX track, with both areas connected to facilitate the shared use of some facilities.

The velodrome is a concrete track of approximately 380m in length and is approximately 35 years old. The track surface has signs of cracking and some unevenness, and will need to be re-surfaced in the short-term. The track has floodlighting, which needs to be upgraded to achieve compliance (400 lux).

The two storey pavilion includes a clubroom/ social space on the first floor with view across the track. This space was refurbished in 2011, but water damage is evident. Downstairs the canteen, change rooms, and amenities are all good sizes but need refurbishment to modernise them.

The tiered seating along the front straight needs shelter, and the sheltered terracing on the back straight could be removed and replaced with natural grass terracing, or similar, to improve the overall amenity of the surrounds. The perimeter fence needs replacing, and some general landscaping at the western and eastern ends of the velodrome would also improve the overall amenity of the facility.

The international standard BMX track was first constructed in 2010, and was further upgraded prior to the BMX Supercross World Cup in February 2020. The track and surrounds are in good condition, however, there is little supporting infrastructure. A building accommodating a canteen, storage and a bike repair facility is located along the southern edge of the track. It is currently not compliant with the Building Code and all toilet and change room needs for events have to be accessed using the velodrome pavilion. Onsite provision of amenities at the BMX track is a short-term need.



### 3.8 WB Hunter Reserve

The reserve has been the home for the Northern Victorian Show Jumping Club for over 40 years. It is loosely divided into two separate spaces: the southern half accommodates the natural grass arena, a sand arena, and two warm-up areas (sand and grass); whilst the northern half of the site includes all the horse yards and is the float parking and camping area. There are 48 powered sites.

The main arena has an excellent grass surface and is highly regarded in the equestrian sector, however, it lacks appropriate spectator viewing and seating areas. The available amenities are not conducive to large State and National championships, with limited office space and toilets, and no showers onsite to service people staying overnight during events. Currently, showers within the small soccer pavilion are used, however, there are access restrictions when the pavilion is being used by soccer clubs for training and matches.



### 3.9 Soccer Precinct

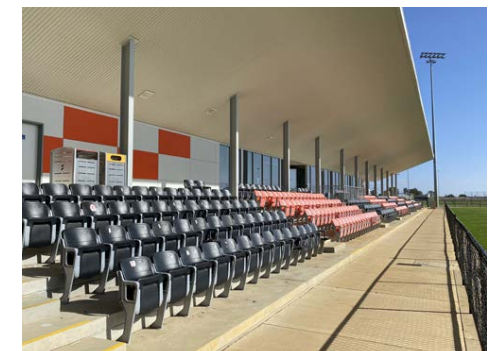
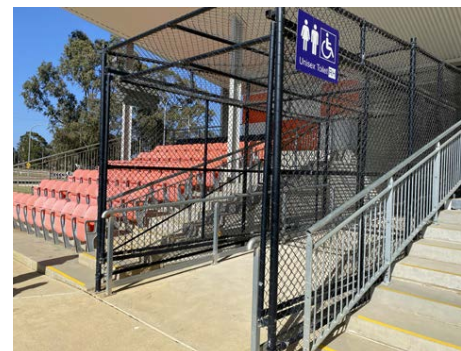
The soccer precinct has benefited from significant upgrades and new facilities in the past 4 – 5 years. It comprises a dedicated main pitch with a new main pavilion on the west side and the older Murray Slee Pavilion on the east side, main pitch 2, and five multipurpose pitches, and a small pavilion to service these pitches. The surface of all pitches is excellent, and all pitches are floodlit: the main pitch with 500 lux, and all remaining pitches to 200 lux. The main pitch has a perimeter fence to facilitate ticketed events, main pitch 2 has a pitch perimeter only, and the remaining multipurpose pitches have no fencing.

The main pavilion has a large function space on the 1st floor overlooking the main pitch, and adjoining kitchen/ canteen, and toilets. Player and referee change rooms and amenities are on the ground floor. The user groups have indicated that the four change rooms and associated amenities are insufficient to service all soccer clubs' needs, and NPL matches. A key issue is the small size of the change rooms and the co-location of the public toilets entrance and the entrance to the change rooms. This co-location results in the public not being able to access the public toilets just before the commencement of matches and for the duration of half-time, due to an NPL match condition that players' races must be kept free of the public when players are entering and exiting the pitch.

The Murray Slee Pavilion was the original change room building within the Sports City Precinct, and whilst old and needing upgrading, is still in good condition and could provide a solution to the identified change room shortfall. The small pavilion is new, and comprises two change rooms and associated amenities, and a canteen that is shared by all soccer groups.

There is little provision for spectator shelter around the unfenced pitches, with shelter restricted to the verandah around the small pavilion, and a small shelter just north of the small pavilion.

A secure goal storage compound could be provided at the northern end of the soccer precinct, which would be a better option to the current storage of portable goals over the road adjacent to the water detention basin.



### 3.10 Traffic, Parking & Pedestrian Connections

Shepparton Sports City currently has two vehicle entrances - the main entrance from Numurkah Road and a secondary entrance via a roundabout at the intersection of Brauman and Packham Streets. The main entrance caters for the higher volume traffic movements while the southern entrance typically caters for more local access and use.

The planned construction of the Shepparton Bypass and future expansion of the site into undeveloped land to the north will provide the opportunity for the creation of a third entry point to the site off Wanganui Road. This will potentially improve accessibility for users and reduce traffic congestion during large scale events.

Consideration will however be required to ensure this connection does not encourage vehicles to short cut through the site. It is recommended that consideration of suitable traffic calming measures, such as raised pavement pedestrian crossings, be implemented as part of any changes to the site access and vehicle circulation.

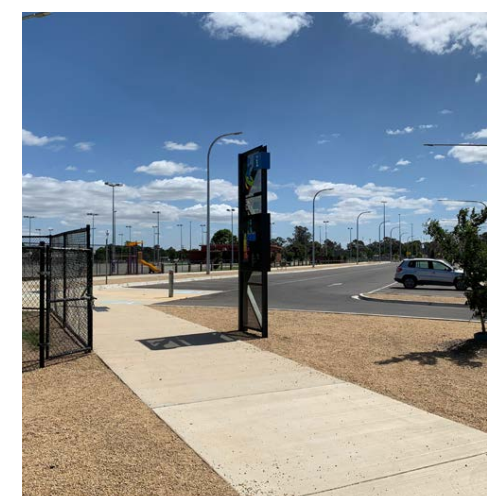
Car access and parking has been developed with direct access from Brauman Street in a manner that creates congestion, is unsafe for pedestrians, and is unsightly for surrounding residents. A review of the arrangement and improved integration with the Brauman streetscape is recommended. This should include consideration of street tree planting and pedestrian access into the facilities as well as east west access along the southern frontage of Sports City.

Provision for pedestrians within the site has been fragmented with some poor connections between parking areas and building entrances or facilities. It is recommended that pedestrian access and connectivity be considered as part of any

improvements to existing or new facilities.

The parking provisions on the site are located adjacent to each facility and are generally adequate for day to day use and small events. The new Stadium and Munarra Centre include large carparks to cater for users and visitors to these facilities. These parking provisions may also help to cater for larger events on the site. It is recommended that overflow parking constructed in the northern part of the site with bridge access over the drain is required. Access to this area can be controlled via a locked gate.

Consistent with the Sport 2050 Strategic Plan, the development of a shared trail (4-5km) for exercise around the outside of the precinct is recommended which may help with off field training and sports such as triathlons, as well as provide more people with the opportunity and incentive to exercise.





### 3.11 Landscape and Tree Planting

The site, being largely reclaimed low lying agricultural land, is primarily devoid of significant vegetation and is very open, exposed and unappealing. Tree planting has been quite limited, and many trees continue to struggle to establish in a very exposed environment and poor soil conditions.

Existing street trees on the site are quite limited and some are not performing well. A few remnant red gums are present near Wanganui Secondary College and these should be carefully protected and managed.

A programme on new tree planting consistent with the 2007 master plan should be implemented as soon as possible so they can establish a new micro-climate.

Some existing plants at the site have not performed well due to poor planting conditions, a lack of preparation at time of planting and limited water availability. All new planting should be carefully planned, soil improvements made, and planting mounds created as required. Where possible, all new trees should be installed with a temporary drip irrigation system or programmed to receive regular watering via a water truck during their establishment phase.

Consistent with the 2007 master plan, the general planting concept is to provide some deciduous trees along the carpark and sporting field edges along the main Precinct Boulevard Linking roadway. This will emphasise this area as the “heart” of the precinct and provide winter sun in heavily used pedestrian areas. Other perimeter areas should be developed with native and indigenous species in a shelter belt form of planting to provide wind protection and micro-climate improvement.

The customised species planting list for the Sports City should be consistent with Greater Shepparton City Council’s approved street tree planting list. The species palette

has been selected to allow a good diversity of species suitable for a range of use applications and the project impacts of climate change.

It is recommended that a detailed Landscape Master Plan be developed for the Sports City site which includes a suite of suitable trees for shade, wind mitigation and street tree planning across the site.

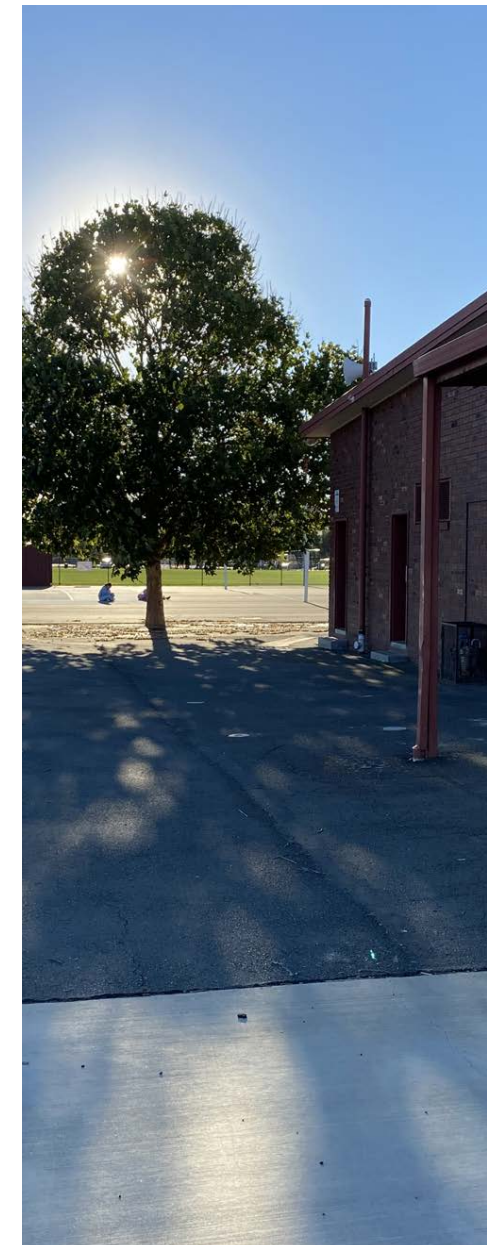
Stakeholder and user group feedback throughout the consultation process for the Master Plan indicates a high level of concern about a lack of shade and screen planting to mitigate winds.

The landscape character of the site is an important connection to the region and local environment. We recommend a palette of largely indigenous plants be developed and incorporated into changes to the landscape areas on the site. These plants are well suited to the local soils and climatic conditions and will help to strengthen the local character and identity.

Given the challenges created by climate change, the selection of plants which are well suited to harsh and dry climates is an important consideration. However, some irrigation will be required to sustain planting in high profile areas particularly around buildings and under eaves. WSUD initiatives and treatments which re-charge soil moisture or passively irrigate landscape areas should be encouraged and integrated into the Landscape Master Plan for the site.

The Landscape Master Plan should also include a suite of suitable hardy and climate resilient mid storey and ground cover planting. In order to ensure planting and vegetation is provided to suit the specific requirements, it is recommended that landscape zones be developed in order to focus the landscape treatments in areas which provide the highest value and ensure areas can be managed and maintained. For example, the site entrances, building frontages and high use areas should be provided the higher level of landscape treatment with simple mass planting treatments adopted in secondary or low-profile areas.

A detailed planting plan should also be developed for the site with year-by-year works recommended.



## 4 COMMUNITY CONSULTATION

The Shepparton Sports City Master Plan Refresh 2022 has been informed by extensive consultation and input from Sports City user groups and other key stakeholders. Consultation methods used included a user group survey, one-on-one meetings, and telephone interviews. A majority of the consultation occurred in February and March 2021. The full consultation report is available in the appendix.

The following is a summary of the stakeholder consultation. Key information collected includes:

### 4.1 Sports City User Groups

#### 4.1.1 General

- An estimated 7,230 people are regular users of Sports City facilities, being members of user groups based at Sports City.
- Of the groups that responded to the survey:
- just over half indicated that they have experienced a declining membership in the past five years, three have increased their membership, and three have had stable membership.
- a third indicated that the facilities they use at Sports City are adequate for their needs, a third indicated that only some of the facilities are adequate, and a third responded that the facilities they use are not adequate.

Club - No of Teams and Players (2019)												
Club/ Organisation	No of Teams							No of Players/ Participants				
	Senior Mens	Senior Women	Senior Mixed	Junior Boys	Junior Girls	Junior Mixed	Total	Male	Female	Senior	Junior	Total
GV Suns Soccer Club	3	0	0	5	0	0	8	135	5	45	95	140
Shepparton Junior Soccer Association	0	0	0	19	4	142	165	1170	975	0	2145	2145
Shepparton South Soccer Club	3	1	0	0	0	6	10	81	51	60	72	132
Shepparton United Soccer Club	2	1	0	1	0	0	4	45	15	45	15	60
Goulburn Valley Hockey Association	8	8	0	0	0	14	30	236	210	200	246	446
Shepparton Table Tennis Association	0	0	28	0	0	0	28	39	6	43	2	45
McEwen Reserve Tennis Club	0	3	7	0	0	3	13	50	50	80	20	100
Shepparton Little Athletics Association	-	-	-	-	-	-	-	56	64	-	120	120
Greater Shepparton Basketball Association	54	6	0	88	41	0	189	994	329	420	903	1323
Shepparton Cycling Club	-	-	-	-	-	-	-	58	14	53	19	72
Shepparton BMX Club	-	-	-	-	-	-	-	14	6	-	-	20
Shepparton Netball Association	0	5	0	0	111	0	116	0	1,800	200	1600	1800
Goulburn Valley Wheelchair Athletics Club	-	-	-	-	-	-	-	-	-	-	-	12
Shepparton Badminton Association	-	-	-	-	-	-	8	90	90	60	120	180
Northern Victorian Show Jumping Club	-	-	-	-	-	-	-	50	150	175	200	375
<b>TOTAL</b>	<b>70</b>	<b>24</b>	<b>35</b>	<b>113</b>	<b>156</b>	<b>165</b>	<b>571</b>	<b>3018</b>	<b>3765</b>	<b>1381</b>	<b>5557</b>	<b>6970</b>

Table 1 Consultation participation data

Note: The above participation data reflects 2019 data (pre-COVID), and where data was not provided by some clubs, it has been estimated after reviewing season fixtures



#### 4.1.2 Soccer

- Girls participation levels in soccer in Shepparton are low compared to State participation averages.
- The available number of soccer pitches generally meets current needs, and clubs and the Shepparton Junior Soccer Association suggested that likely future needs in the short to medium term will also be accommodated by the current provision.
- The soccer groups rated the quality and condition of the soccer pitches and floodlighting as excellent.
- The new Main Pavilion is also generally rated highly, except the number and size of the change rooms needs review.
- The Goulburn Valley Suns advocated for permanent access to the Murray Slee Pavilion, as a possible solution to the current inadequate provision of change rooms in the Main Pavilion for National Premier League matches.
- The new smaller northern pavilion is not meeting all needs of groups: it lacks change rooms, a meeting space, and there are some functional constraints with the design/ layout of the kitchen.
- There is a lack of spectator shelter to service the multipurpose pitches.
- There are challenges currently to accommodate game day parking for soccer.

#### 4.1.3 Hockey

- The hockey groups noted that Pitch 2 (the multipurpose synthetic pitch) has inadequate player and spectator shelters, no scoreboard, and the floodlights are below competition standard.
- The Lorna Tingay Pavilion needs upgrading and extending to properly service teams using Pitch 2.

#### 4.1.4 Stadium Sports

- Shepparton Sports Stadium is currently being planned for expansion and upgrade, including conversion into a sports and events centre.
- Approximately 260,000 people use the Stadium each year.
- Basketball is the dominant stadium user, followed by badminton and table tennis.
- Basketball participation numbers have stabilised in the past few years, which is not consistent with the trend of participation increase across Victoria.
- Badminton membership is stable, but there is more badminton being played than ever before.
- Visy Stadium is an important secondary venue for the Shepparton Badminton Association and needs to be retained.
- The current room utilised for table tennis is small and accommodates only 6 tables.
- Appropriate lighting, room configuration (to accommodate up to 12 table tennis courts), and access to adequate storage are key items that the Shepparton Table Tennis Association have advocated for consideration for the stadium redevelopment project.

#### 4.1.5 Athletics

- The Shepparton Little Athletics Association is experiencing increased participation levels, including for senior athletics.
- The Association noted that a new pavilion and track floodlighting were part of the initial scope of works for the athletics facility redevelopment completed in 2017, and are still outstanding.
- Track and field facilities still required to be constructed include a discus/ hammer cage, a steeplechase water jump, and pole vault pits and run-ups.

#### 4.1.6 Netball

- The Shepparton Netball Association noted that football netball club competitions are impacting Association participant numbers, and it is losing umpires to the football netball leagues as well.
- The Association identified the following constraints with the netball complex: there are no courtside shelters for players or spectators; and the clubroom player/ umpire change rooms and amenities.
- Whilst not all 18 courts are used for domestic competition, 15-16 courts are required to host regional and State championships.
- The Association requires access to indoor courts for rep teams to train and other pathway programs.

#### 4.1.7 Tennis

- The tennis facility was initially the home to four tennis clubs, but in 2004/05 the clubs amalgamated to form McEwen Reserve Tennis Club. Three Shepparton tennis associations continue to have their home base at McEwen Reserve, and use the facility for their finals.
- The Club has experienced a general decline in membership, and has been unable to establish a sustainable night tennis competition.
- The key facility upgrades required are to resurface all courts, replace the court fencing, and upgrade the clubhouse.

#### 4.1.8 Cycle Sports

- The Shepparton Cycling Club noted that the current provision of facilities at the velodrome is adequate, however, the condition of the clubroom building is poor (change rooms, canteen, and clubroom), the track requires resurfacing, the floodlights need upgrading, and the perimeter fence needs replacing.

- The Club supports in principle the development of a joint-use pavilion with the Northern Victorian Show Jumping Club or the Shepparton BMX Club.
- A key issue for the Shepparton BMX Club is its low membership numbers, as it has the responsibility to maintain the track and facilities, and lacks sufficient volunteers to host events.
- The Club noted that the facility lacks permanent, fit for purpose toilets, and clubroom and storage facilities, however, is currently working with Council to have a new clubroom building designed.

#### 4.1.9 Equestrian

- The Northern Victorian Show Jumping Club has been based at WB Hunter Reserve for over 40 years, and has a stable membership.
- Four major events are conducted by the Club annually, and other regular users of the reserve are the Shepparton Adult Riding Club (6 events per year) and the Shepparton Pony Club.
- The main arena surface is of a standard to host Australian Championships, however, the supporting infrastructure is below standard, including poor public amenities and a lack of spectator seating.
- A key issue for the Club when hosting events is the lack of onsite amenities (toilets and showers).
- Other improvements identified by the Club include increasing the number of powered sites from 48 to 60, add an additional horse washdown bay, and provide shelter/ shade over the horse yards.

## 4.2 Other Stakeholder Groups

### 4.2.1 Valley Sport

- Valley Sport noted the following concerning Sports City facilities and user groups:
  - There are challenges for soccer, as there are some conflicts between the clubs/ stakeholders, however, the Shepparton Junior Soccer Association is run very well.
  - Junior pathways are disjointed in many of the sports based at Sports City, however, the Shepparton Little Athletics Association is doing well with junior growth, and now there is the emergence of senior athletics.
  - The McEwen Reserve Tennis Club is not utilising the full potential for the tennis facility, and an option to consider might be to consolidate all Shepparton tennis clubs at the McEwen Reserve tennis facility and create a high quality regional tennis complex.
  - The Shepparton BMX Club has great facilities, however, is a struggling club.
  - The Hockey facility is excellent, and the Goulburn Valley Hockey Association has strong governance and manages hockey well, however the clubs are struggling to attract new members.
- Valley Sport explained that Visy Stadium needs to be retained, where possible, as it has high levels of after school use, a dance group utilising the dance studio, and there is a netball competition conducted in the stadium.

### 4.2.2 AFL Goulburn Valley

- Football participant numbers are down due to COVID-19, especially in Youth Girls and Senior Women. There are currently no Senior Women's teams in Shepparton.
- There is currently insufficient football grounds in Shepparton to meet training and competition demand.

### 4.2.3 Department of Education & Training (DET)

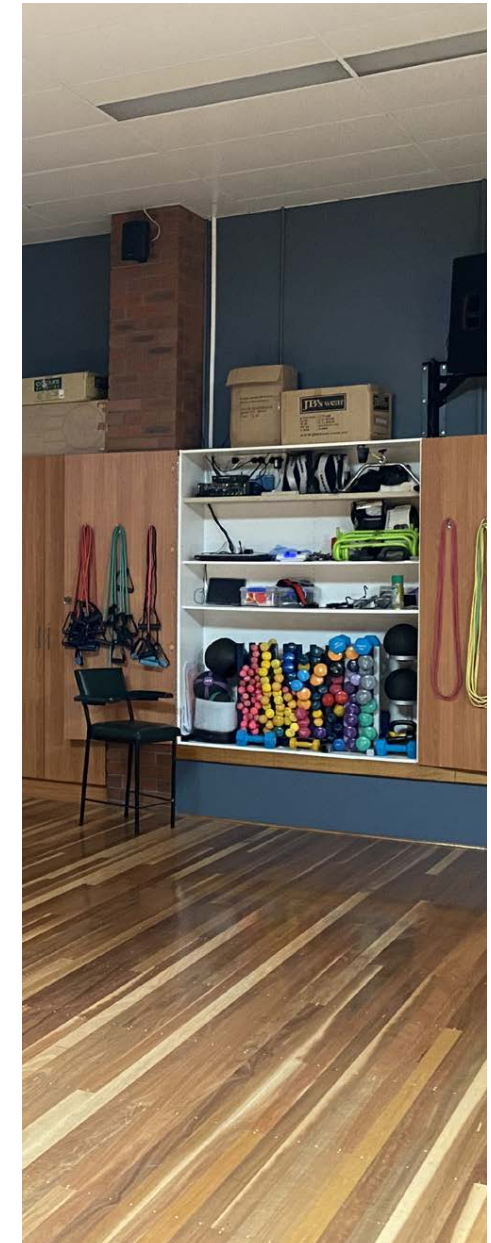
- DET is happy for current and future new partnerships to continue with external community groups for their use of Campus facilities, such as the Visy Stadium and the oval.
- Improved linkages and connections (shared paths) between the Wanganui Campus and Sports City are important, particularly between the Campus and the Main Pavilion, which is utilised by the school.

### 4.2.4 Rumbalara Football Netball Club

- As well as 5 football teams and 8 netball teams, the Club also coordinates and delivers a range of community education, health and support programs and services for its people, which are conducted from the clubroom facilities.
- The Club has no summer sporting uses of the reserve, however, does enable other clubs and groups to use the facilities.
- The Club facility has received \$4m - \$5m for its redevelopment and upgrade, as part of the broader Munarra Centre for Regional Excellence development, with key upgrades including new and expanded clubroom and social spaces, new netball courts, new playground and active recreation space, new spectator shelters and car parking, and upgraded oval floodlights.
- The Club supports improved pedestrian/ cycle connections between the Rumbalara FNC facility and the Multipurpose Sports Fields to the west.

### 4.2.5 Munarra Centre for Regional Excellence

- It was agreed that the integrated planning of Sports City and the MCRE should build on opportunities to:
  - enhance the walkability and cyclability throughout the precinct.
  - celebrate aboriginal heritage, culture and history as part of the arrival experience to Sports City from the Goulburn Valley Highway, and through the naming of areas and/or streets throughout Sports City to reflect local aboriginal culture or names.
  - create a plaza/ place of assembly at the interface of the MCRE entrance and the southern car park.



## 5 MASTER PLAN UPDATE 2022

### 5.1 The 2022 Review

Along with the consultation feedback, the Council seeks to take into consideration the following factors in order to provide a revised direction for the precinct:

- The significant increase in female sports participation
- The continuing population growth of Greater Shepparton
- Site specific planning that has occurred for some facilities within and just outside of the precinct – i.e. the Munarra Centre of Excellence, and the Shepparton Sports and Events Centre
- The need to improve the linkages within the precinct and, also the connection of the precinct to the surrounding area

### 5.2 Issues & Opportunities

Within The GSCC's Sport 2050 Strategic Plan 2011, numerous points were also noted for consideration as part of the planning for Shepparton Sports City. While the majority of those points were addressed through the development of the precinct, the following points provide a summary of some of the items that may still warrant investigation and consideration in 2022 and beyond.

- The facilities within the Sports City are at the highest level in the hierarchy for the respective sports - i.e. regional or municipal level. Consequently, it is expected that participants will be prepared to travel some distance to the facilities.
- Sports City is generally geared towards providing for those sports that require multiple playing fields in the one location. This position is not recommended to change given the benefit of having larger sports centrally located for ease of competition management and the synergies obtained through siting support and other facilities together – i.e. better use of roads, car parking, kiosk/change room and toilet amenities, and more efficient use of light towers and irrigation infrastructure etc.
- The facilities are generally compatible with adjacent sports facilities and an urban environment.
- There are economies of scale/opportunities to share by locating the sports with others, especially in an event format.
- The amount of space needed for facilities requires planning and due consideration to ensure the best use of the Sports City land over the long-term. Prudent use of available space is recommended to ensure the most efficient use of vacant land is achieved and the siting of sports and facilities considers multiple eventualities to

help future-proof the use of those facilities, and in affect any investment that is made.

- The ability for the facility to be used for many different levels of competition is important to ensure sufficient activation of the facility occurs – i.e. used for local and district sport as well as shared for regional competitions/events.
- Consideration of the overall model for equestrian facilities within the region given the recognition of there being multiple sites throughout Greater Shepparton which may be able to be better coordinated to obtain economies of scale with common facilities – i.e. stables, car parking, camping areas, amenities etc. It is recommended that the Draft Whole of Sport Plan for Equestrian developed in 2018 be revised and completed to provide direction for the future development of Equestrian facilities within the Greater Shepparton region.
- Consideration of the development requirements for the McEwen Tennis Centre noting the findings from the Whole of Sport Plan: Tennis 2017, and the general trend of declining participation in Tennis nationally. Analysis of the utilisation of existing tennis facilities may highlight the need for consolidation of courts and clubs.
- Consideration of the development of a shared trail (4-5km) for exercise around the outside of the precinct which may help with off field training and sports such as Triathlon, as well as provide more people with an incentive to exercise.

### 5.3 Sustainability Initiatives

Council have adopted a climate adaptation plan in 2016. A number of recommended climate adaptation actions are applicable to Shepparton Sports City, such as council buildings design, drain and flood management, landscape design and urban forestry.

Other ESD improvements include LED lighting throughout, removal of gas appliances, solar panels, greater shade and landscaping to reduce heat island effects.

In March 2020, Greater Shepparton City Council declared a climate emergency. Council also have a 2030 zero emissions target for council operations.

### 5.4 Accessibility

Greater Shepparton City Council is committed to developing sporting fixtures and facilities that are accessible to all regardless of a person's age or ability.

These sporting facilities and fixtures will be designed and developed in accordance with the seven principles of universal design.

### 5.5 Master Plan Update Adoption

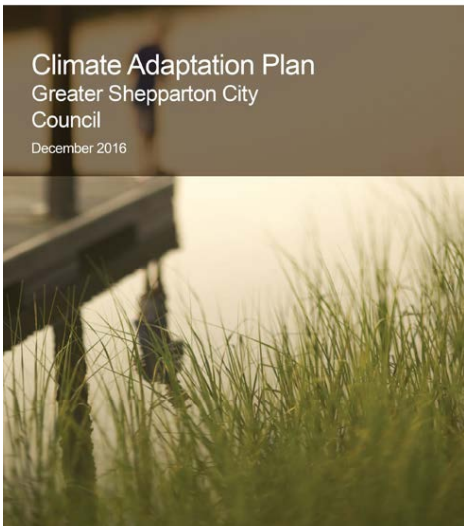
In regards to large State or Federal external funding opportunities which require a matching contribution and where only Council can apply, these will be considered on a case by case basis by Council's Executive Leadership Team at the time, if the matching contribution plus contingency can be proven to be provided by the particular Committee/ Club.

In adopting this master plan, Council recognises the aspirations and priorities of the Shepparton Sports City user groups and broader community for the future development of this precinct.

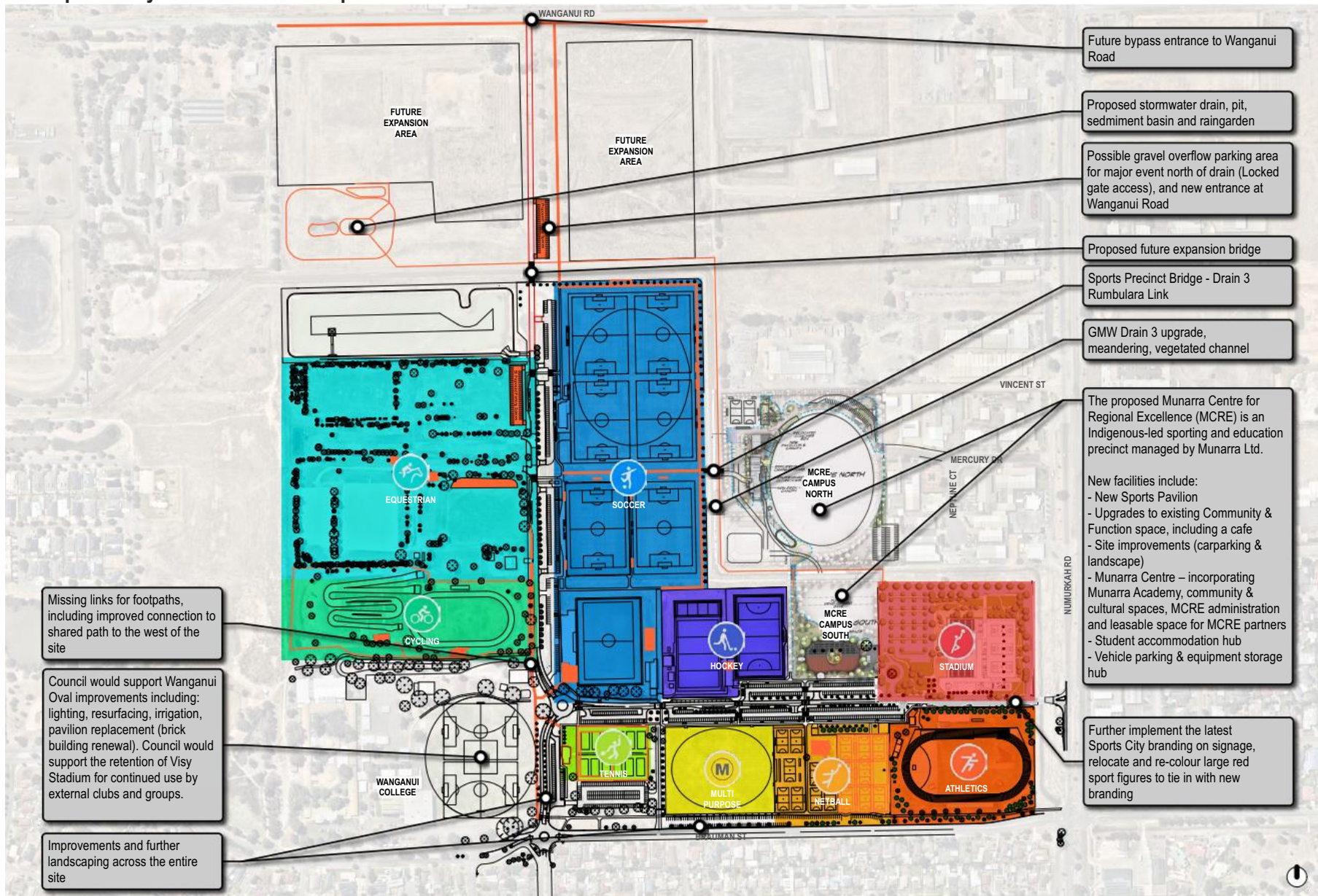
It is important to note that adoption of this master plan does not guarantee funding for works or upgrades that have been identified. While some work of actions can be delivered by in kind work and others under existing funding arrangements, the larger components requiring capital investment will be subject to detailed design, cost estimation and funding.



AECOM



### 5.6 Sports City Master Plan 2022 Update



5.6.1 Precedent Images



Fig. 4 Image showing location of proposed footpath outside the cycling precinct

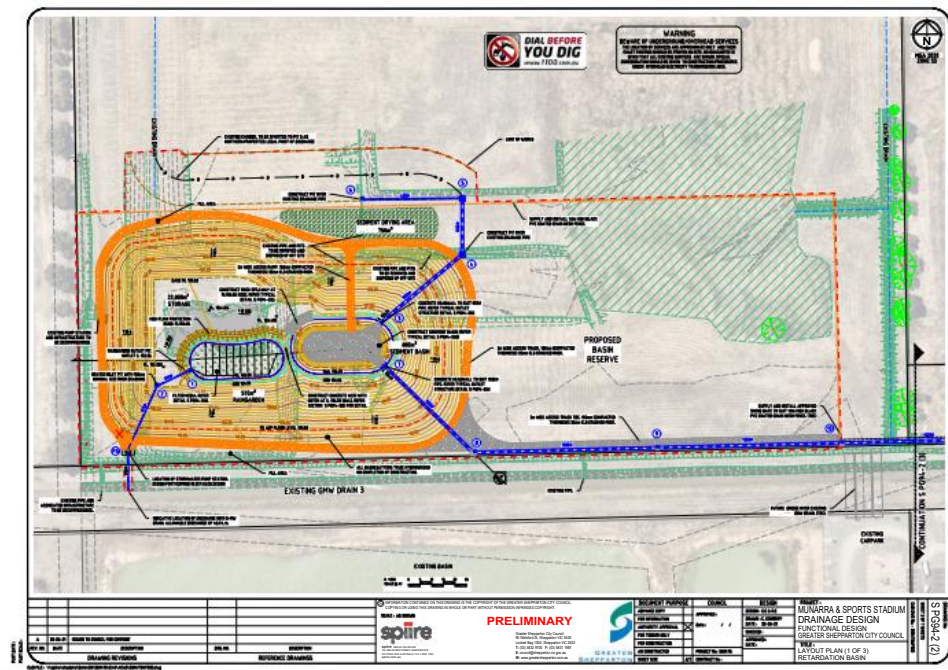


Fig. 5 Proposed sediment ponds and wetland north of GMW Drain 3 (Adopted from Spire)

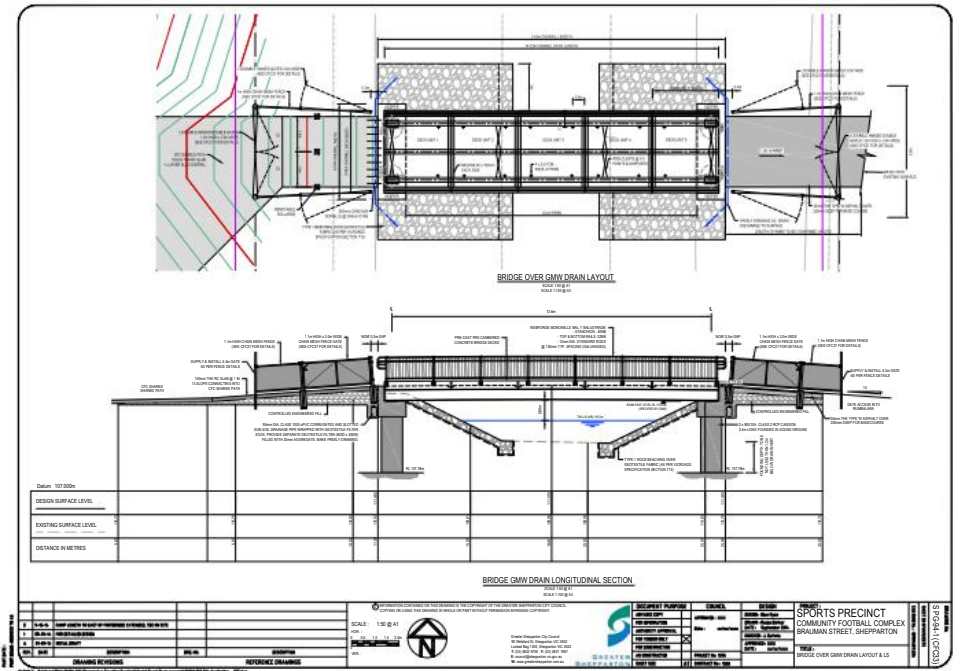
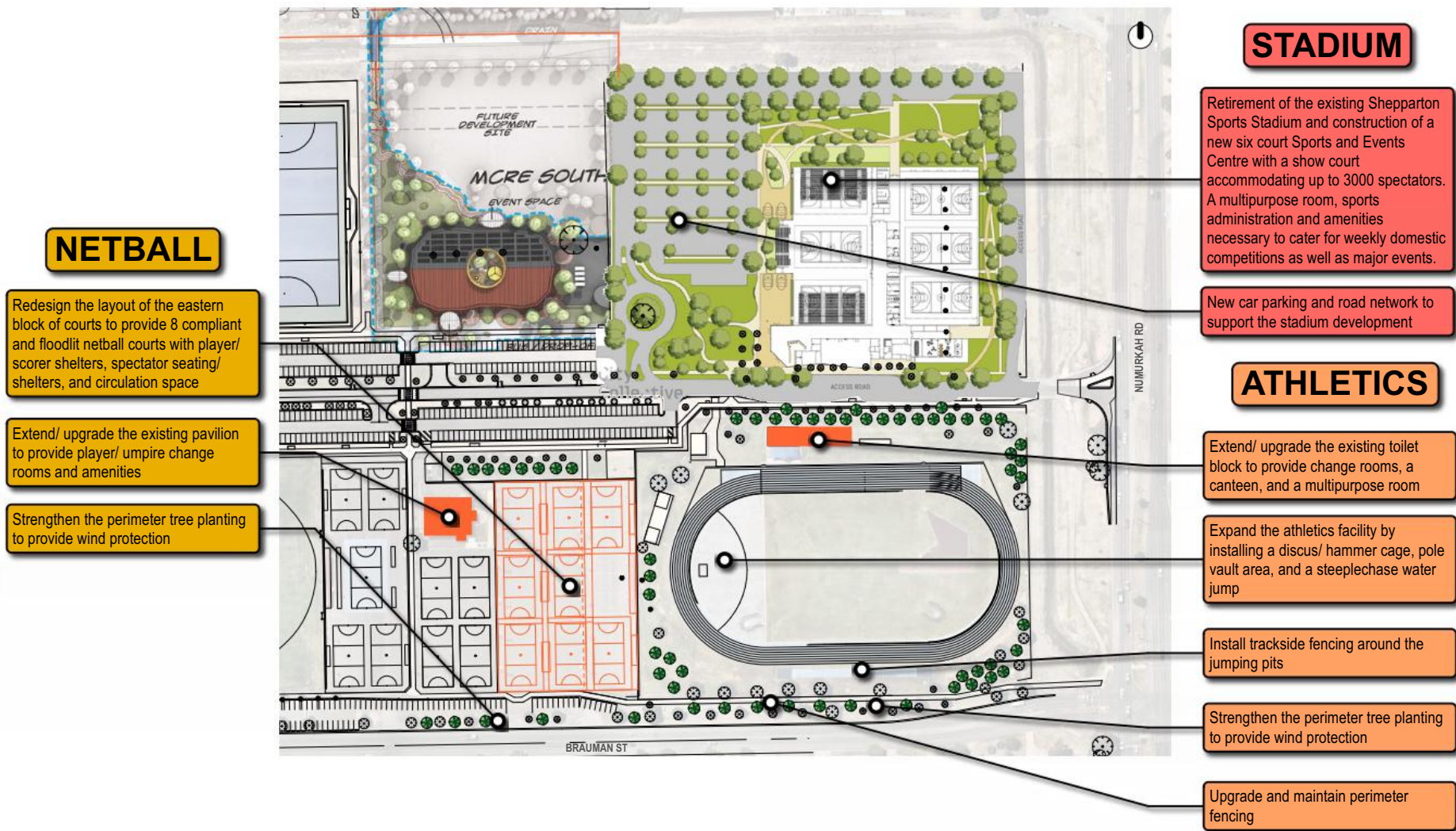


Fig. 6 Proposed footbridge across GMW Drain 3 near the soccer fields



5.7 Sports City Master Plan 2022 Update: Stadium, Netball and Athletics Precincts



5.7.1 Precedent Images



5.7.2 Shepparton Netball Centre alternative layout

**Shepparton Netball Centre**

Proposed alternate layout for the eastern block of courts

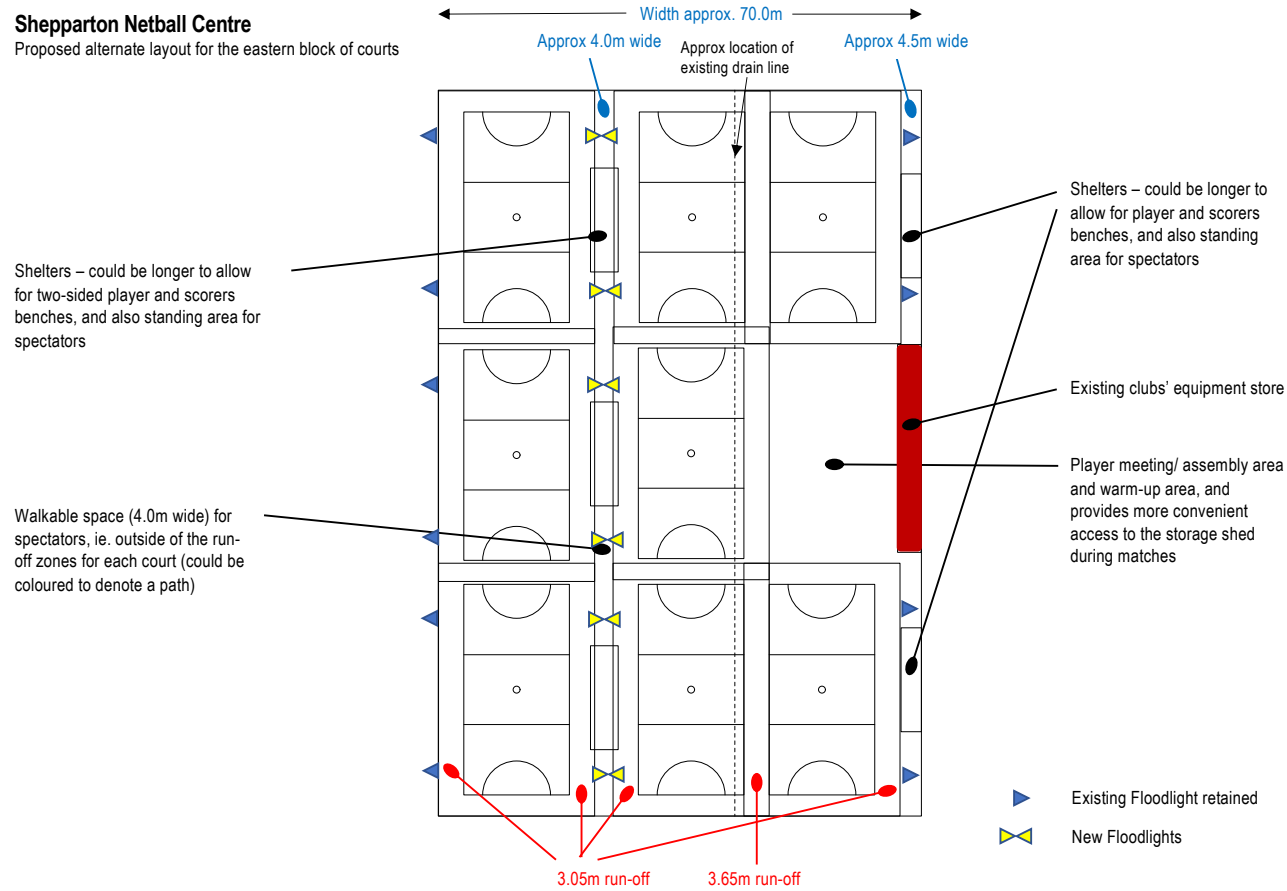


Fig. 7 Proposed Netball Centre alternative layout

### 5.7.3 Stadium Sports Proposed Development

The design of the proposed stadium redevelopment is well underway during at the time of writing of this update.

The new stadium will redefine the entrance experience to the Sports City as a whole from Numurkah Road, and the design of the southeast corner of this development shall be celebrated as such.

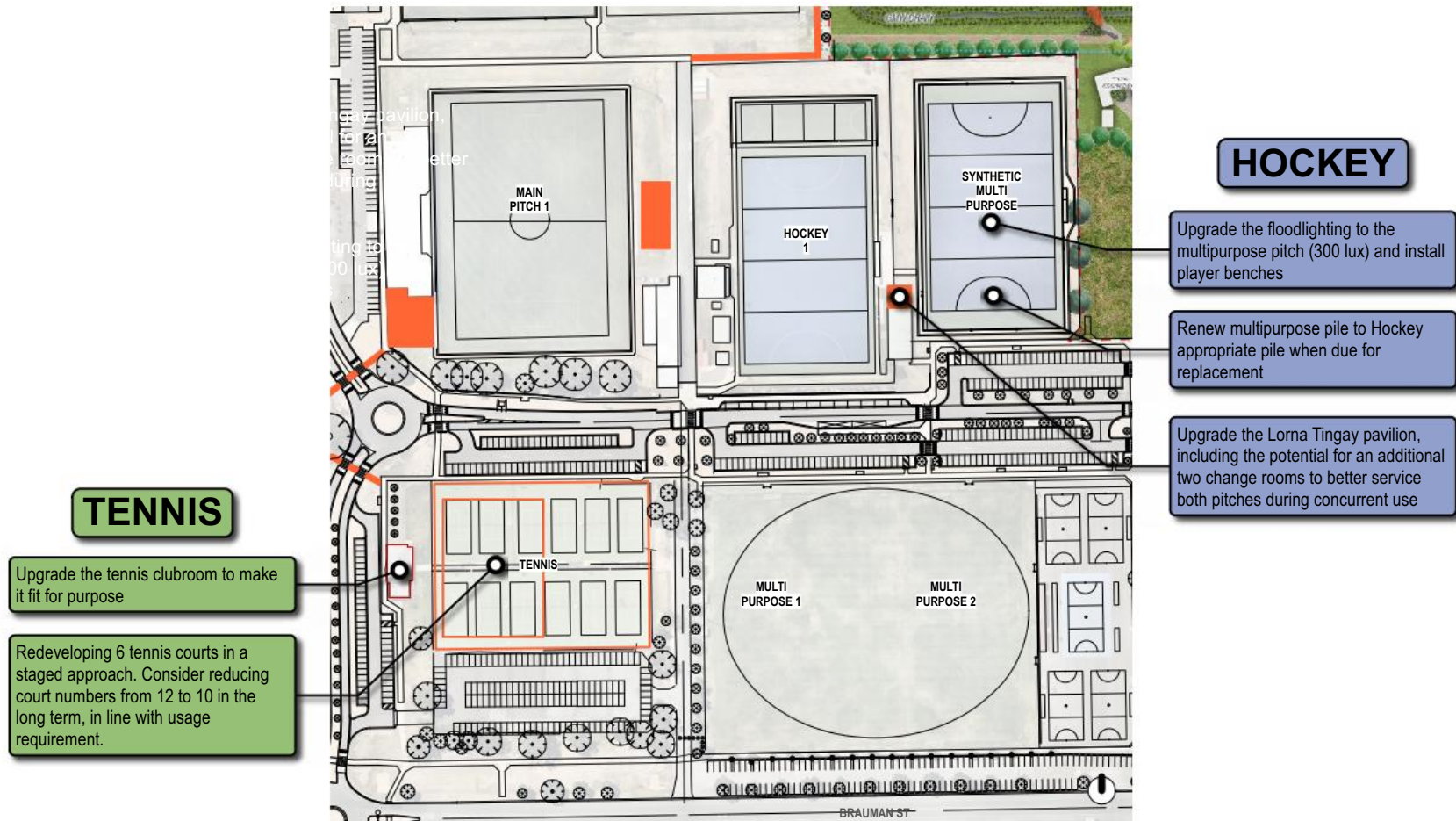


Fig. 8 Render of the Stadium development (Adopted from City Collective)

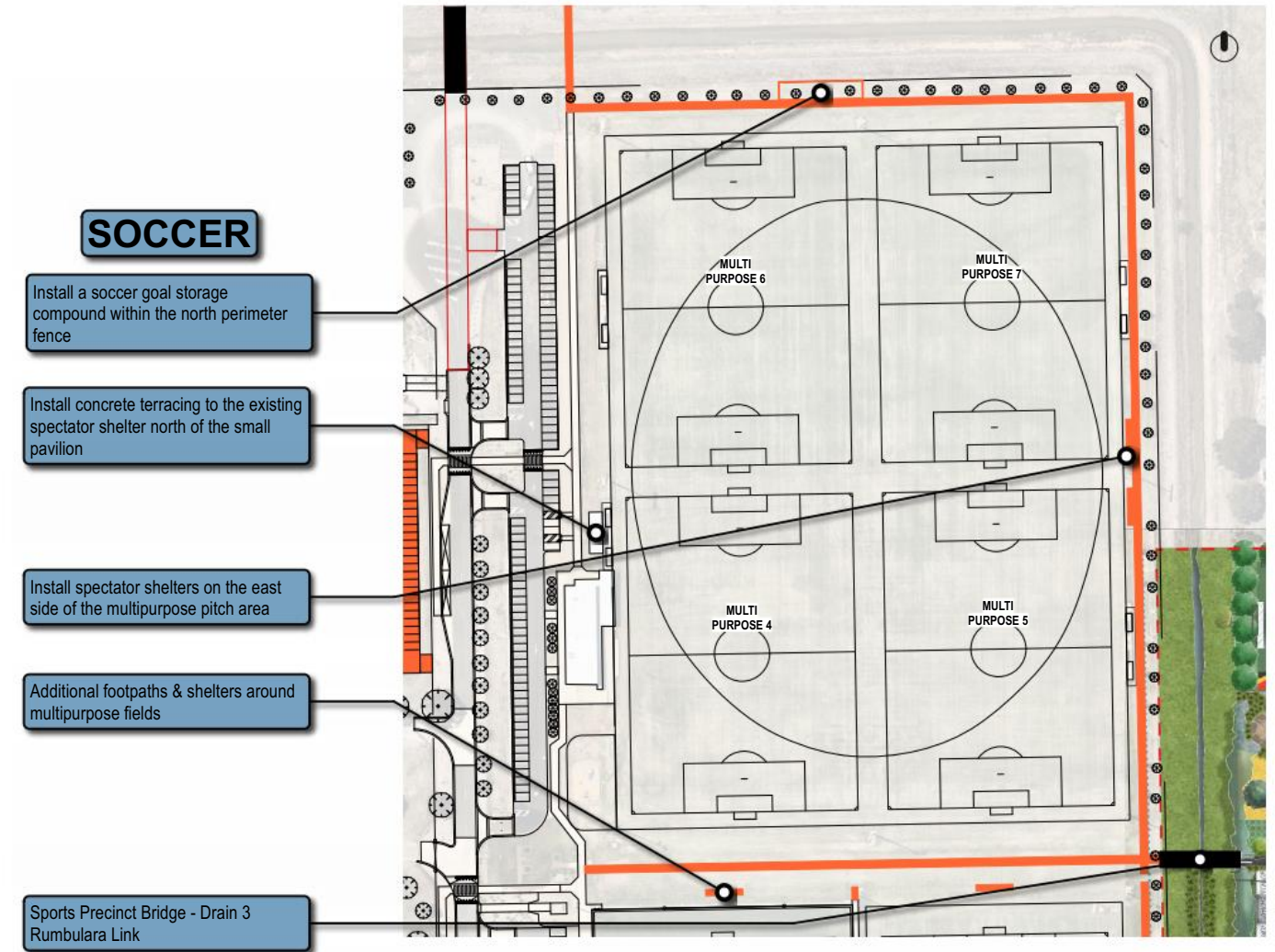


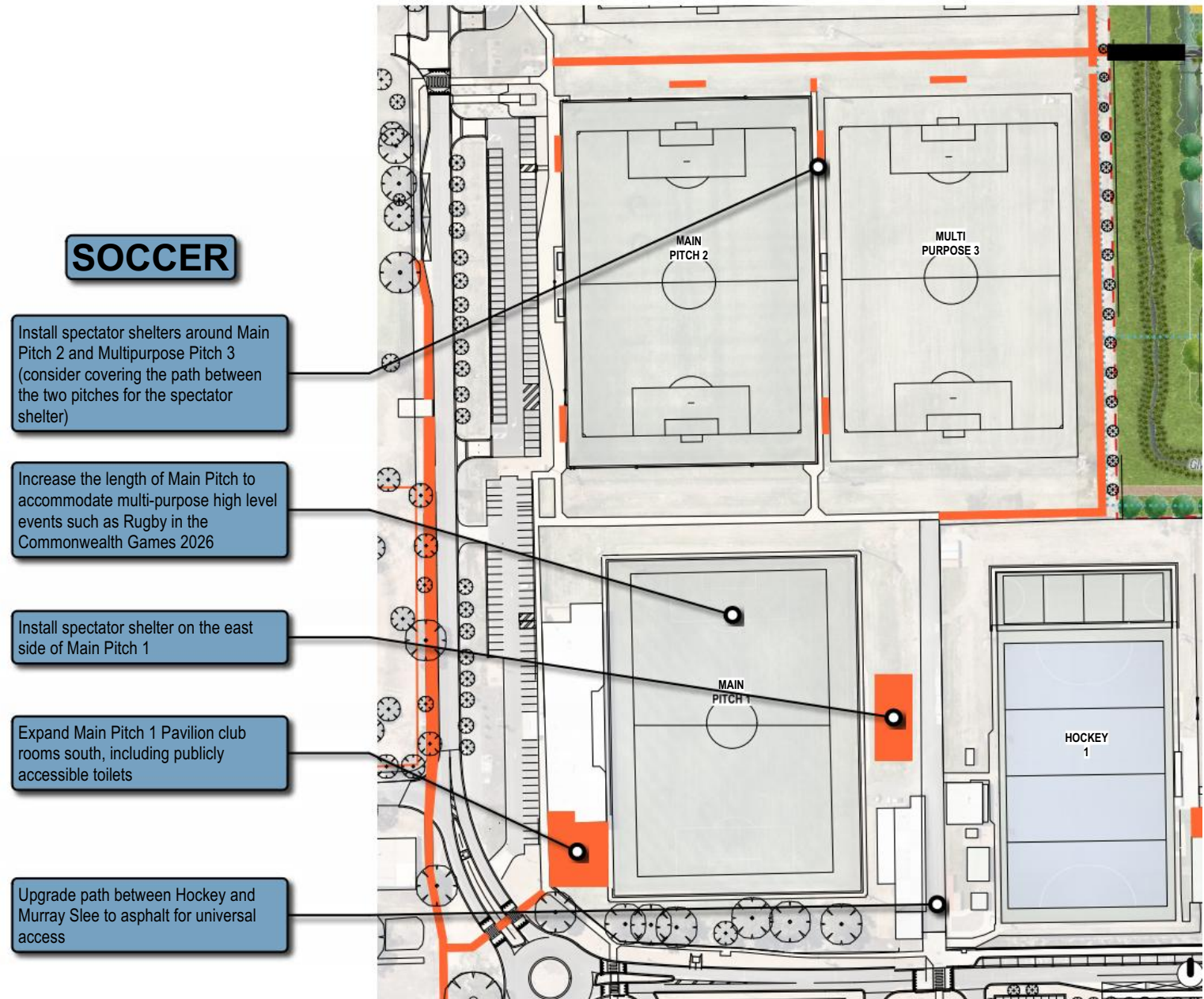
Fig. 9 Proposed site plan of the Stadium development (Adopted from City Collective)

5.8 Sports City Master Plan 2022 Update: Hockey and Tennis Precincts



5.9 Sports City Master Plan 2022 Update: Soccer Precinct



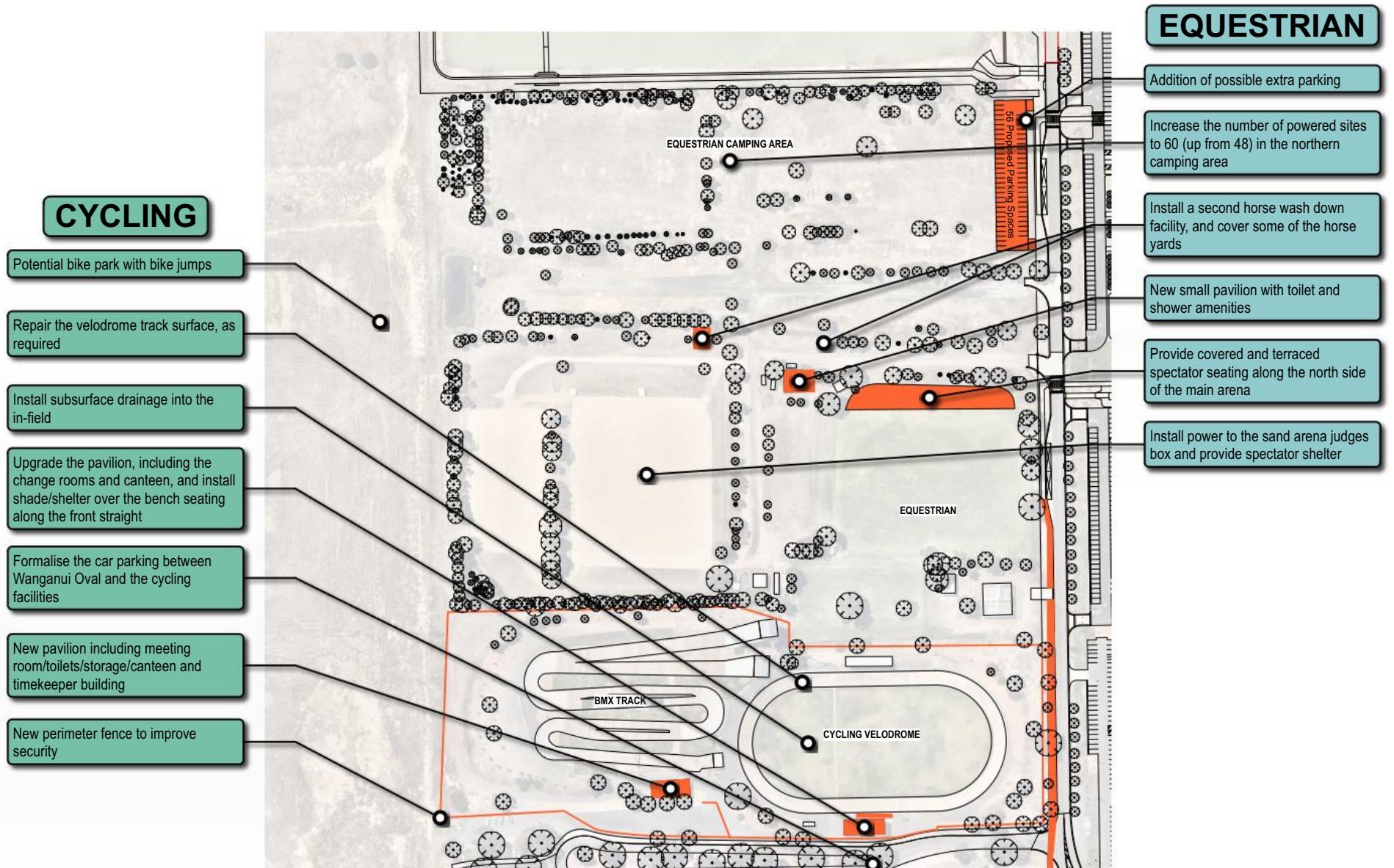




5.9.1 Precedent Images



5.10 Sports City Master Plan 2022 Update: Equestrian and Cycling Precincts



5.10.1 Precedent Images

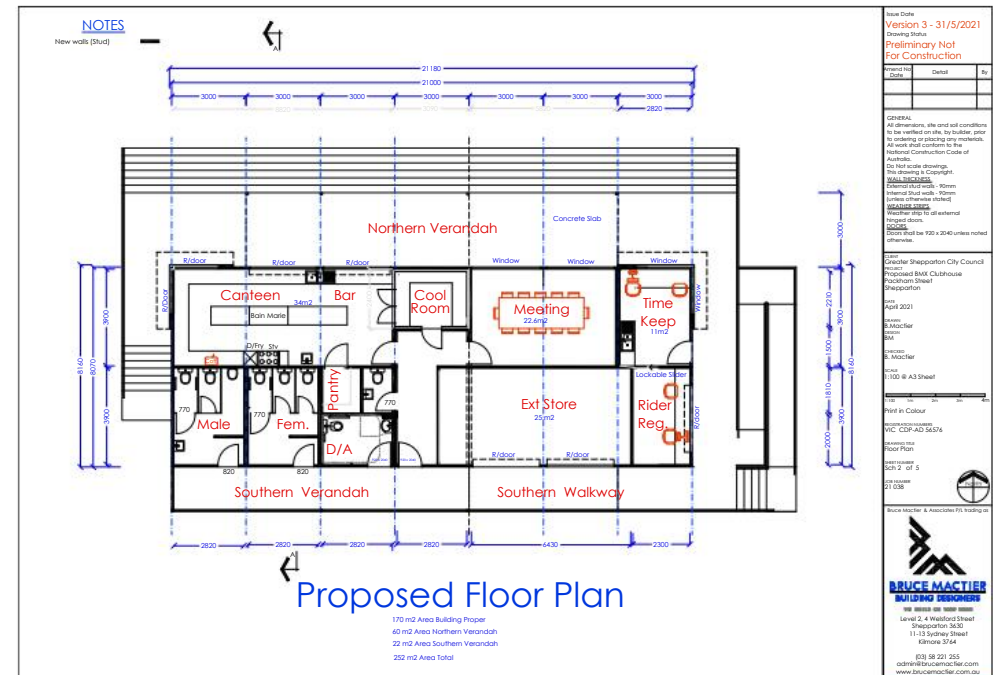


Fig. 10 Proposed BMX Pavilion (Adopted from Bruce Mactier Building Designers)

### 5.11 Consolidated List

The following is a consolidated list of all the recommended projects in this Master Plan. Projects that are comparatively straightforward are labelled “Short-term”.

Precinct	Project	Priority
Overview	Missing links for footpaths, including improved connection to shared path to the west of the site	Short-term
Overview	Council would support Wanganui Oval improvements including: lighting, resurfacing, irrigation, pavilion replacement (brick building renewal). Council would support the retention of Visy Stadium for continued use by external clubs and groups.	Short-term
Overview	Improvements and further landscaping across the entire site	Short-term
Overview	Future bypass entrance to Wanganui Road	Long-term
Overview	Proposed stormwater drain, pit, sediment basin and raingarden	Long-term
Overview	Possible gravel overflow parking area for major event north of drain (Locked gate access), and new entrance at Wanganui Road	Long-term
Overview	Proposed future expansion bridge	Long-term
Overview	Sports Precinct Bridge - Drain 3 Rumbalara Link	Short-term
Overview	GMW Drain 3 upgrade, meandering, vegetated channel	Long-term
Overview	The proposed Munarra Centre for Regional Excellence (MCRE) is an indigenous-led sporting and education precinct managed by Munarra Ltd.  New facilities include: - New Sports Pavilion - Upgrades to existing Community & Function space, including a cafe - Site improvements (carparking & landscape) - Munarra Centre – incorporating Munarra Academy, community & cultural spaces, MCRE administration and leasable space for MCRE partners - Student accommodation hub - Vehicle parking & equipment storage hub	Short-term
Overview	Prepare a Landscape Masterplan for the site including a detailed planting plan with year-by-year works recommended.	Short-term
Overview	Develop a shared trail (4-5km) for exercise around the outside of the precinct	Short-term
Overview	Undertake a review of ESD and opportunities for sustainability improvements across the Site.	Short-term
Overview	In association with the MCRE and Rumbalara develop a precinct wide programme to explore opportunities to celebrate aboriginal heritage, culture and history. This should include opportunities for art and cultural expression as well as the naming of roads and facilities.	Short-term
Overview	Further implement the latest Sports City branding on signage, relocate and re-colour large red sport figures to tie in with new branding	Short-term
Netball	Redesign the layout of the eastern block of courts to provide 8 compliant and floodlit netball courts with player/ scorer shelters, spectator seating/ shelters, and circulation space	Short-term
Netball	Extend/ upgrade the existing pavilion to provide player/ umpire change rooms and amenities	Short-term
Netball	Strengthen the perimeter tree planting to provide wind protection	Short-term
Stadium	Retirement of the existing Shepparton Sports Stadium and construction of a new six court Sports and Events Centre with a show court accommodating up to 3000 spectators.  A multipurpose room, sports administration and amenities necessary to cater for weekly domestic competitions as well as major events.	Long-term
Stadium	New car parking and road network to support the stadium development	Long-term

Precinct	Project	Priority
Athletics	Extend/ upgrade the existing toilet block to provide change rooms, a canteen, and a multipurpose room	Short-term
Athletics	Expand the athletics facility by installing a discus/ hammer cage, pole vault area, and a steeplechase water jump	Long-term
Athletics	Install trackside fencing around the jumping pits	Long-term
Athletics	Strengthen the perimeter tree planting to provide wind protection	Short-term
Athletics	Upgrade and maintain perimeter fencing	Long-term
Tennis	Upgrade the tennis clubroom to make it fit for purpose	Long-term
Tennis	Redeveloping 6 tennis courts in a staged approach. Consider reducing court numbers from 12 to 10 in the long term, in line with usage requirement	Long-term
Hockey	Upgrade the floodlighting to the multipurpose pitch (300 lux) and install player benches	Short-term
Hockey	Upgrade the Lorna Tingay pavilion, including the potential for an additional two change rooms to better service both pitches during concurrent use	Short-term
Hockey	Renew multipurpose pile to Hockey appropriate pile when due for replacement	Long-term
Soccer	Install a soccer goal storage compound within the north perimeter fence	Long-term
Soccer	Install concrete terracing to the existing spectator shelter north of the small pavilion	Long-term
Soccer	Install spectator shelters on the east side of the multipurpose pitch area	Short-term
Soccer	Additional footpaths & shelters around multipurpose fields	Short-term
Soccer	Sports Precinct Bridge - Drain 3 Rumbalara Link	Short-term
Soccer	Install spectator shelters around Main Pitch 2 and Multipurpose Pitch 3 (consider covering the path between the two pitches for the spectator shelter)	Short-term
Soccer	Install spectator shelter on the east side of Main Pitch 1	Long-term
Soccer	Expand Main Pitch 1 Pavilion club rooms south, including publicly accessible toilets	Long-term
Soccer	Upgrade path between Hockey and Murray Slee to asphalt for universal access	Short-term
Soccer	Increase the length of Main Pitch to accommodate multi-purpose high level events such as Rugby in the Commonwealth Games 2026	Short-term
Cycling	Repair the velodrome track, as required	Long-term
Cycling	Install subsurface drainage into the in-field	Long-term
Cycling	Upgrade the pavilion, including the change rooms and canteen, and install shade/shelter over the bench seating along the front straight	Long-term
Cycling	Formalise the car parking between Wanganui Oval and the cycling facilities	Long-term
Cycling	New pavilion including meeting room/toilets/storage/canteen and timekeeper	Long-term
Cycling	New perimeter fence to improve security	Long-term
Cycling	Proposed bike park with bike jumps	Short-term
Equestrian	Addition of possible extra parking	Long-term
Equestrian	Increase the number of powered sites to 60 (up from 48) in the northern camping	Long-term
Equestrian	Install a second horse wash down facility, and cover some of the horse yards	Long-term
Equestrian	New small pavilion with toilet and shower amenities	Short-term
Equestrian	Provide covered and terraced spectator seating along the north side of the main	Short-term
Equestrian	Install power to the sand arena judges box and provide spectator shelter	Short-term

## 6 APPENDIX

### 6.1 Literature Review

The following reports and strategies provided important context, background and direction during the Shepparton Sports City Master Plan Review:

- Greater Shepparton 2030 Plan
- Greater Shepparton Council Plan 2017-2021
- Sport 2050 Strategic Plan (2021)
- Greater Shepparton Whole of Sport Plan Cricket (2017)
- Greater Shepparton Whole of Sport Plan Tennis (2017)
- Shepparton Cycling Precinct Master Plan (2015)

The key directions from the plans and strategies relevant to Shepparton Sports City are summarised below.

#### 6.1.1 Greater Shepparton 2030 Plan

The Greater Shepparton 2030 Plan provides the blueprint for building sustainable economic activity and maximising the quality of life in the municipality for the period to 2030, and sets the vision and strategy to guide planning, leadership, decisions and expectations about the municipality in the future. Council's strategic planning vision for Greater Shepparton 2030 is:

*Greater Shepparton 2030 – the regional centre distinguished by the range of its sustainable achievements.*

The key principles underpinning the Plan are listed below, and have informed the development of the Sports City Master Plan Refresh:

- Sustainability
- Innovation
- Partnership and Inclusiveness
- Leadership

- Equity
- Adaptability
- Integrated Planning

Of the five Strategic Directions that support the Plan, the following two are relevant to the Sports City Master Plan Refresh.

#### Community Life

Enhance social connectedness, physical and mental health and wellbeing, education and participatory opportunities in order to improve liveability and provide a greater range of community services. This will be achieved through the themes of:

17. Recreation and open space
18. Safe and accessible environments

#### Environment

Conservation and enhancement of significant natural environments and cultural heritage. This will be achieved through the themes of:

1. The natural environment
2. Floodplain management

#### 6.1.2 Greater Shepparton Council Plan 2021-2025

The Council Plan details the strategic objectives that will influence the priorities of Council through to 2025, and will guide decision making, and the allocation of resources to deliver outcomes and services to the community. The plan outlines five Key Themes and are underpinned by Strategic Objectives and Actions which provide the building blocks to achieve the City's new Community Vision:

*A diverse, vibrant and connected community valuing accessible opportunities for everyone.*

*We adapt and respond in a way that is innovative, sustainable and accountable.*

*We acknowledge where we have been*

*and look forward to where we are going.*

*Together we are Greater!*

The following two Key Themes and the selected Strategic Objectives and Actions are relevant to the Sports City Master Plan update.

#### Key Theme 3 – Vibrant and Diverse Economy

We will drive the visitor economy by growing visitor experiences and major events that provide employment and other opportunities to the community. Relevant Objectives include:

Strategic Objective: Expand Greater Shepparton's visitor economy

Action: Implement infrastructure that provides additional tourism opportunities

#### Key Theme 4 – Infrastructure and Technology

We will focus on the planning of our region's requirements to enable delivery of technology and infrastructure to meet the current and future needs of the community. Relevant Objectives include:

Strategic Objective: Reliable, efficient, affordable and accessible transport

Action: Provide more cycling and walking routes and infrastructure

Strategic Objective: Develop and improve community and recreation facilities

Action: Develop the Shepparton Sports and Events Centre

Action: Implementation of the Sport 2050 Strategy (with flow-on effects to Sports City)

#### 6.1.3 Draft Sport 2050 Strategic Plan (2021)

The draft Sport 2050 Strategic Plan builds on and updates the previous Sport 2050 Plan developed in 2011. The Plan reviews the existing and distribution of sporting facilities,

undertakes a demand assessment for the future need for sporting facilities, and outlines a series of directions and recommendations for the future provision of sport in the Greater Shepparton municipality.

There are several directions and recommendations important for the future planning and provision for facilities within Sports City, which were factored into the development of the refreshed master plan for Sports City, and include:

- All sporting facilities should be incrementally made accessible to people with a disability, all genders, and people of all cultural backgrounds
- Ensure that all facilities have adequate spectator and player seating, shelter and shade, and have amenities that support women's sport
- Sports facilities with multiple playing fields and courts, and those created as a sporting hub with other community facilities will be more viable, and more easily able to be maintained to a higher quality than others
- Shepparton Sports City precinct should continue to primarily cater to higher levels of competition sport
- Council's investment in sport facilities will give priority to maximising and supporting participation numbers and rates, more so than increasing the number of sporting codes available to the community
- Multi-use of facilities will be strongly encouraged, and 'smaller' sports will be actively encouraged to share facilities with larger sports to ensure better utilisation of facilities
- Consideration of the development of a shared trail (4-5km) for exercise around the outside of the Sports City precinct, which may help with off-field training and sports such as Triathlon, as well as

provide more people with an incentive to exercise

**6.1.4 Greater Shepparton Whole of Sport Plan Cricket (2017)**

The Whole of Sport Plan for Cricket has been developed to provide Council with a vision for supporting cricket at a local and regional level, and to guide the development of improved facilities that will meet current and future community need. The following strategic direction and focus area was considered during the Sports City Master Plan Refresh.

**Strategic Direction:**

Provide access to facilities of the right type and the right quality in the right locations to support and grow cricket participation

Focus Area 4: Assess the feasibility of developing a regional cricket facility in Greater Shepparton

**6.1.5 Greater Shepparton Whole of Sport Plan Tennis (2017)**

The Whole of Sport Plan for Tennis has been developed to provide Council with a vision for supporting tennis at a local and regional level, and to guide the development of improved facilities that will meet current and future community need. Overall, the Plan reported that there has been a 50% decline in the number of players participating in weekend senior competitions (Shepparton District Tennis Association and the Goulburn Murray Lawn Tennis Association) in the past 10 – 15 years. Similarly, the number of players participating in the Shepparton and District Ladies Midweek Tennis Association has declined by 40% since 2005.

In developing the Whole of Sport Plan for Tennis, three strategic directions have been identified for the planning for the future of tennis in Greater Shepparton. The focus areas from two strategic directions are relevant to the future planning for the McEwan

Reserve tennis facility (Sports City).

**Participation**

Provide inclusive, accessible and welcoming playing environments that will support increase participation in tennis.

Focus Area 3: Investigate any barriers to accessing tennis courts.

Action: Support opportunities for clubs to provide flexible access to facilities by installing the ‘Book A Court’ program.

**Infrastructure**

Provide access to facilities of the right type and the right quality in the right locations to support and grow tennis participation.

Focus Area 5: Assess the feasibility of developing a regional tennis facility in Greater Shepparton

Action: Pursue funding to undertake a feasibility study to develop a regional tennis facility in Shepparton.

**6.1.6 Shepparton Cycling Precinct Master Plan (2015)**

The Master Plan provides a plan for the future development, management and use of cycling facilities in the Sports City precinct. The Master Plan report notes that there is the potential for growth in demand for cycling activities, however, consultation with the Shepparton Cycling Club and Shepparton BMX Club suggested there has been a softening of demand for track cycling and BMX track cycling in recent years.

The Master Plan contains many recommendations for upgrades and improvements to the cycling facilities at Sports City under five Themes: Use and Participation; Leasing and Management; Integration and Connections; Visual Appeal and Landscaping; and Infrastructure Condition and Accessibility. The proposals/recommendations that have not already been implemented and are relevant to the Sports

City Master Plan Refresh study, are noted below.

**Theme 3 - Integration and Connections**

Recommendation 3c: Subject to the review of the current management arrangements for the precinct, explore the feasibility of removing the 6 foot high chain mesh fencing around the cycling precinct

Recommendation 3d: As a medium to long term measure, replace the existing pavilion with a centrally located multi-use facility that can be used by the cycling and BMX clubs and possibly serve as a central hub for all cycling disciplines in Shepparton

Recommendation 3e: Develop pathway connections between the cycling precinct and the other sporting facilities in the broader Sports City precinct

Recommendation 3f: Do not proceed with the recommendations in earlier versions of Sports City master plans that support a roadway between the cycling facilities and the equestrian facilities

**Visual Appeal and Landscaping**

Recommendation 4a: Establish a visual gateway on the vacant land at the south eastern corner of the cycling precinct that includes precinct directional signage and planting to highlight the entry to the precinct

Recommendation 4b: Improve landscaping and canopy coverage throughout the cycling precinct, with a focus upon areas surrounding the tracks

**Infrastructure Condition and Accessibility**

Recommendation 5c: Undertake infrastructure assessment and improvement works for the velodrome track including: upgrade the track lighting; replace the seating on the south side of the velodrome track with new compliant seating that includes shade cover; upgrade the grassed area inside the velodrome track removing the concrete strip and improving the drainage; remove

the grandstand on the north side of the velodrome track and landscape this area to provide a space suitable as a viewing area for track cycling events

Recommendation 5d: Address pedestrian safety and car parking constraints by providing defined car parking on the southern side of the BMX track, providing defined car parking on the DET land opposite the velodrome, providing planting or bollards to discourage vehicles from parking along footpaths and on the central median strip, and providing semi defined parking at the western end of the cycling precinct

Recommendation 5f: Consider the feasibility of installing solar panels on the existing velodrome pavilion

Recommendation 5g: Provide security lighting throughout the cycling precinct to assist in addressing problems associated with vandalism, and to help make the precinct safer for users at night time

Recommendation 5h: Improve the pathways and accessibility of the cycling precinct for people with mobility impairments and parents with prams

6.2 Stakeholder Consultation Summary Report



Shepparton Sports City Master Plan Review & Update  
**Stakeholder Consultation Summary Report**

October 2021



**TABLE OF CONTENTS**

<b>1</b>	<b>STAKEHOLDER ENGAGEMENT</b>	<b>3</b>
1.1	Project Overview	3
1.2	Overview of Consultation Program	3
<b>2</b>	<b>SUMMARY OF STAKEHOLDER CONSULTATION</b>	<b>4</b>
<b>3</b>	<b>SPORTS CITY USER GROUPS – ONLINE SURVEY</b>	<b>8</b>
<b>4</b>	<b>SPORTS CITY USER GROUPS - MEETINGS</b>	<b>11</b>
<b>5</b>	<b>OTHER STAKEHOLDER GROUPS</b>	<b>19</b>

**APPENDICES**

- Appendix 1 - Primary Contact with Key Stakeholders Consulted
- Appendix 2 - Online Sporting Clubs Survey
- Appendix 3 - Completed Online Sporting Clubs Surveys



## 1 Stakeholder Engagement

### 1.1 Project Overview

The Greater Shepparton City Council has commissioned a review and update of the 2013 Shepparton Sports Precinct Master Plan. (The precinct is now referred to Shepparton Sports City).

This is necessary, as many improvement projects recommended in the 2013 plan have now been completed, and the other factors that triggered the need for the review include:

- there has been a significant increase in female sports participation.
- the population of Greater Shepparton continues to grow.
- there has been some site specific planning undertaken for some of the facilities within and just outside of the precinct, ie. the Munarra Centre of Excellence and the Shepparton Sports Stadium.
- the need to improve the linkages within the precinct and also the connection of the precinct to the surrounding area.

Urban Initiatives and Simon Leisure were appointed in December 2020 to undertake the project.



### 1.2 Overview of Consultation Program

Much of the consultation with project stakeholders occurred at the 'front-end' of the project, and was primarily aimed at confirming or clarifying the following:

1. the size and profile of precinct user groups (membership numbers, number of teams, facilities used and frequency of use, etc.).
2. the facilities being used by user groups within Shepparton Sports City.
3. the adequacy or otherwise of these facilities to meet groups' current and likely future needs.

The methods used for consultation with Sports City user groups included an **online survey** followed by **in-person meetings**. Meetings were held with other stakeholders that are not user groups, but have an indirect association with or use of Sports City.

Refer Appendix 1 for a list of all groups consulted, and their main contact person.

This report collates all information collected during stakeholder engagement carried out during the period February – October 2021.



## 2 Summary of Stakeholder Consultation

The Shepparton Sports City Master Plan Refresh 2021 has been informed by extensive consultation and input from Sports City user groups and other key stakeholders. Consultation methods used included a user group survey, one-on-one meetings, and telephone interviews. A majority of the consultation occurred in February and March 2021.

Key information collected from the stakeholder consultation includes the following:

### Sports City User Groups

#### General

- An estimated 6,970 people are regular users of Sports City facilities, being members of user groups based at Sports City.
- Of the groups that responded to the survey:
  - just over half indicated that they have experienced a declining membership in the past five years, three have increased their membership, and three have had stable membership.
  - a third indicated that the facilities they use at Sports City are adequate for their needs, a third indicated that only some of the facilities are adequate, and a third responded that the facilities they use are not adequate.

Club/ Organisation	Club - No of Teams and Players (2019)											
	No of Teams						No of Players/ Participants					
	Senior Mens	Senior Women	Senior Mixed	Junior Boys	Junior Girls	Junior Mixed	Total	Male	Female	Senior	Junior	Total
GV Suns Soccer Club	3	0	0	5	0	0	8	135	5	45	95	140
Shepparton Junior Soccer Association	0	0	0	19	4	142	165	1170	975	0	2145	2145
Shepparton South Soccer Club	3	1	0	0	0	6	10	81	51	60	72	132
Shepparton United Soccer Club	2	1	0	1	0	0	4	45	15	45	15	60
Goulburn Valley Hockey Association	8	8	0	0	0	14	30	236	210	200	246	446
Shepparton Table Tennis Association	0	0	28	0	0	0	28	39	6	43	2	45
McEwen Reserve Tennis Club	0	3	7	0	0	3	13	50	50	80	20	100
Shepparton Little Athletics Association	-	-	-	-	-	-	-	56	64	-	120	120
Greater Shepparton Basketball Association	54	6	0	88	41	0	189	994	329	420	903	1323
Shepparton Cycling Club	-	-	-	-	-	-	-	58	14	53	19	72
Shepparton BMX Club	-	-	-	-	-	-	-	14	8	-	-	20
Shepparton Netball Association	0	5	0	111	0	116	0	1,800	200	1600	1800	1800
Goulburn Valley Wheelchair Athletics Club	-	-	-	-	-	-	-	-	-	-	-	12
Shepparton Badminton Association	-	-	-	-	-	-	8	90	90	60	120	180
Northern Victorian Show Jumping Club	-	-	-	-	-	-	-	50	150	175	200	375
<b>TOTAL</b>	<b>70</b>	<b>24</b>	<b>35</b>	<b>113</b>	<b>156</b>	<b>165</b>	<b>571</b>	<b>3018</b>	<b>3765</b>	<b>1381</b>	<b>5557</b>	<b>6970</b>

Note: The above participation data reflects 2019 data (pre-COVID), and where data was not provided by some clubs, it has been estimated after reviewing season fixtures

#### Soccer

- Girls participation levels in soccer in Shepparton are low compared to State participation averages.
- The available number of soccer pitches generally meets current needs, and clubs and the Shepparton Junior Soccer Association suggested that likely future needs in the short to medium term will also be accommodated by the current provision.
- The soccer groups rated the quality and condition of the soccer pitches and floodlighting as excellent.
- The new Main Pavilion is also generally rated highly, except the number and size of the change rooms needs review.
- The Goulburn Valley Suns advocated for permanent access to the Murray Slee Pavilion, as a possible solution to the current inadequate provision of change rooms in the Main Pavilion for National Premier League matches.
- The new smaller northern pavilion is not meeting all needs of groups: it lacks change rooms, a meeting space, and there are some functional constraints with the design/ layout of the kitchen.
- There is a lack spectator shelter to service the multipurpose pitches.
- There are challenges currently to accommodate game day parking for soccer.



#### Hockey

- The hockey groups noted that Pitch 2 (the multipurpose synthetic pitch) has inadequate player and spectator shelters, no scoreboard, and the floodlights are below competition standard.
- The Lorna Tingay Pavilion needs upgrading and extending to properly service teams using Pitch 2.

#### Stadium Sports

- Shepparton Sports Stadium is currently being planned for expansion and upgrade, including conversion into a sports and events centre.
- Approximately 260,000 people use the Stadium each year.
- Basketball is the dominant stadium user, followed by badminton and table tennis.
- Basketball participation numbers have stabilised in the past few years, which is not consistent with the trend of participation increase across Victoria.
- Badminton membership is stable, but there is more badminton being played than ever before.
- Visy Stadium is an important secondary venue for the Shepparton Badminton Association and needs to be retained.
- The current room utilised for table tennis is small and accommodates only 6 tables.
- Appropriate lighting, room configuration (to accommodate up to 12 table tennis courts), and access to adequate storage are key items that the Shepparton Table Tennis Association have advocated for consideration for the stadium redevelopment project.

#### Athletics

- The Shepparton Little Athletics Association is experiencing increased participation levels, including for senior athletics.
- The Association noted that a new pavilion and track floodlighting were part of the initial scope of works for the athletics facility redevelopment completed in 2017, and are still outstanding.
- Track and field facilities still required to be constructed include a discus/hammer cage, a steeplechase water jump, and pole vault pits and run-ups.

#### Netball

- The Shepparton Netball Association noted that football netball club competitions are impacting Association participant numbers, and it is losing umpires to the football netball leagues as well.
- The Association identified the following constraints with the netball complex: there are no court-side shelters for players or spectators; and the clubroom player/umpire change rooms and amenities.
- Whilst not all 18 courts are used for domestic competition, 15-16 courts are required to host regional and State championships.
- The Association requires access to indoor courts for rep teams to train and other pathway programs.

#### Tennis

- The tennis facility was initially the home to four tennis clubs, but in 2004/05 the clubs amalgamated to form McEwen Reserve Tennis Club. Three Shepparton tennis associations continue to have their home base at McEwen Reserve, and use the facility for their finals.
- The Club has experienced a general decline in membership, and has been unable to establish a sustainable night tennis competition.
- The key facility upgrades required are to resurface all courts, replace the court fencing, and upgrade the clubhouse.

#### Cycle Sports

- The Shepparton Cycling Club noted that the current provision of facilities at the velodrome is adequate, however, the condition of the clubroom building is poor (change rooms, canteen, and clubroom), the track requires resurfacing, the floodlights need upgrading, and the perimeter fence needs replacing.
- The Club supports in principle the development of a joint-use pavilion with the Northern Victorian Show Jumping Club or the Shepparton BMX Club.

- A key issue for the Shepparton BMX Club is its low membership numbers, as it has the responsibility to maintain the track and facilities, and lacks sufficient volunteers to host events.
- The Club noted that the facility lacks permanent, fit for purpose toilets, and clubroom and storage facilities, however, is currently working with Council to have a new clubroom building constructed.

#### Equestrian

- The Northern Victorian Show Jumping Club has been based at WB Hunter Reserve for over 40 years, and has a stable membership.
- Four major events are conducted by the Club annually, and other regular users of the reserve are the Shepparton Adult Riding Club (6 events per year) and the Shepparton Pony Club.
- The main arena surface is of a standard to host Australian Championships, however, the supporting infrastructure is below standard, including poor public amenities and a lack of spectator seating.
- A key issue for the Club when hosting events is the lack of onsite amenities (toilets and showers).
- Other improvements identified by the Club include increasing the number of powered sites from 48 to 60, add an additional horse washdown bay, and provide shelter/shade over the horse yards.

#### **Other Stakeholder Groups**

##### Valley Sport

- Valley Sport noted the following concerning Sports City facilities and user groups:
  - There are challenges for soccer, as there are some conflicts between the clubs/ stakeholders, however, the Shepparton Junior Soccer Association is run very well.
  - Junior pathways are disjointed in many of the sports based at Sports City, however, the Shepparton Little Athletics Association is doing well with junior growth, and now there is the emergence of senior athletics.
  - The McEwen Reserve Tennis Club is not utilising the full potential for the tennis facility, and an option to consider might be to consolidate all Shepparton tennis clubs at the McEwen Reserve tennis facility and create a high quality regional tennis complex.
  - The Shepparton BMX Club has great facilities, however, is a struggling club.
  - The Hockey facility is excellent, and the Goulburn Valley Hockey Association has strong governance and manages hockey well, however the clubs are struggling to attract new members.
- Valley Sport explained that Visy Stadium needs to be retained, where possible, as it has high levels of after school use, a dance group utilising the dance studio, and there is a netball competition conducted in the stadium.

##### AFL Goulburn Valley

- Football participant numbers are down due to COVID-19, especially in Youth Girls and Senior Women. There are currently no Senior Women's teams in Shepparton.
- There is currently insufficient football grounds in Shepparton to meet training and competition demand.

##### Department of Education

- DoE is happy for current and future new partnerships to continue with external community groups for their use of Campus facilities, such as the Visy Stadium and the oval.
- Improved linkages and connections (shared paths) between the Wanganui Campus and Sports City are important, particularly between the Campus and the Main Pavilion, which is utilised by the school.

##### Rumbalara Football Netball Club

- As well as 5 football teams and 8 netball teams, the Club also coordinates and delivers a range of community education, health and support programs and services for its people, which are conducted from the clubroom facilities.
- The Club has no summer sporting uses of the reserve, however, does enable other clubs and groups to use the facilities.

- The Club facility has received \$4m - \$5m for its redevelopment and upgrade, as part of the broader Munarra Centre for Regional Excellence development, with key upgrades including new and expanded clubroom and social spaces, new netball courts, new playground and active recreation space, new spectator shelters and car parking, and upgraded oval floodlights.
- The Club supports improved pedestrian/ cycle connections between the Rumbalara FNC facility and the Multipurpose Sports Fields to the west.

Munarra Centre for Regional Excellence

- It was agreed that the integrated planning of Sports City and the MCRE should build on opportunities to:
  - enhance the walkability and cyclability throughout the precinct.
  - celebrate aboriginal heritage, culture and history as part of the arrival experience to Sports City from the Goulburn Valley Highway, and through the naming of areas and/or streets throughout Sports City to reflect local aboriginal culture or names.
  - create a plaza/ place of assembly at the interface of the MCRE entrance and the southern car park.

### 3 Sports City User Groups – Online Survey

All user groups (29) were emailed an online survey to complete. The aim of the survey was to collect basic information about each group, to confirm which facility(ies) groups were using, and to gauge the general adequacy of the facility(ies) being used. The information collected helped inform the discussions during the one-on-one in-person group meetings.

A copy of the questionnaire is provided in Appendix 2.

Completed surveys were received from 15 groups (a 52% return rate) in the following order.

1. & 12. GV Suns Soccer Club (2 surveys completed)
2. Goulburn Valley Hockey Association
3. Shepparton United Football Netball Club (survey responses relate to Goulburn Valley Grammar School's use of the Shepparton Sports Stadium)
4. Shepparton Table Tennis Association
5. Mooroopna Hockey Club
6. McEwen Reserve Tennis Club
7. & 18. Shepparton Little Athletics Association (2 surveys completed)
8. Greater Shepparton Basketball Association
9. & 14. Northern Victorian Showjumping Club (2 surveys completed)
10. Celtics Basketball Club
11. Shepparton Junior Soccer Association
13. Shepparton Strikers Hockey Club
15. Shepparton United Soccer Club
16. Shepparton Netball Association
17. Dragons Basketball Club

Completed surveys are attached in Appendix 3.

Groups that did not complete a questionnaire were asked similar questions during the one-on-one meetings, and is recorded in Section 3. A summary of the key information collected from the survey responses follows.

**Questions 3 & 4** asked how many players/ participants and teams the group had in the 2019 season (pre-COVID). Table 1 includes club data collected from the questionnaire, collected during in-person meetings, and estimates for other clubs, based on fixtures. Individual basketball clubs have not been included in the table, as their player and team numbers are in with the Greater Shepparton Basketball Association data.



Table 1 – Sports City User Groups' Membership and Team Numbers (2019)

Club/ Organisation	Club - No of Teams and Players (2019)							No of Players/ Participants				
	No of Teams							No of Players/ Participants				
	Senior Mens	Senior Women	Senior Mixed	Junior Boys	Junior Girls	Junior Mixed	Total	Male	Female	Senior	Junior	Total
GV Suns Soccer Club	3	0	0	5	0	0	8	135	5	45	95	140
Shepparton Junior Soccer Association	0	0	0	19	4	142	165	1170	975	0	2145	2145
Shepparton South Soccer Club	3	1	0	0	0	6	10	81	51	60	72	132
Shepparton United Soccer Club	2	1	0	1	0	0	4	45	15	45	15	60
Goulburn Valley Hockey Association	8	8	0	0	0	14	30	236	210	200	246	446
Shepparton Table Tennis Association	0	0	28	0	0	0	28	39	6	43	2	45
McEwen Reserve Tennis Club	0	3	7	0	0	3	13	50	50	80	20	100
Shepparton Little Athletics Association	-	-	-	-	-	-	-	56	64	-	120	120
Greater Shepparton Basketball Association	54	6	0	88	41	0	189	994	329	420	903	1323
Shepparton Cycling Club	-	-	-	-	-	-	-	58	14	53	19	72
Shepparton BMX Club	-	-	-	-	-	-	-	14	6	-	-	20
Shepparton Netball Association	0	5	0	0	111	0	116	0	1,800	200	1600	1800
Goulburn Valley Wheelchair Athletics Club	-	-	-	-	-	-	-	-	-	-	-	12
Shepparton Badminton Association	-	-	-	-	-	-	8	90	90	60	120	180
Northern Victorian Show Jumping Club	-	-	-	-	-	-	-	50	150	175	200	375
<b>TOTAL</b>	<b>70</b>	<b>24</b>	<b>35</b>	<b>113</b>	<b>156</b>	<b>165</b>	<b>571</b>	<b>3018</b>	<b>3765</b>	<b>1381</b>	<b>5557</b>	<b>6970</b>

Question 5 asked whether the group's number of players/ participants had been 'generally stable', 'increasing' or 'declining' for the past five years? The responses in Table 2 are from the survey responses only.

Table 2 – Adequacy of Existing Facilities

Club/ Organisation	Stable	Increasing	Declining
GV Suns Soccer Club	◆		
Shepparton Junior Soccer Association	◆		
Shepparton United Soccer Club	Information not supplied		
Shepparton United Football Netball Club	Information not supplied		
Goulburn Valley Hockey Association			◆
Mooroopna Hockey Club			◆
Shepparton Strikers Hockey Club			◆
Shepparton Table Tennis Association			◆
McEwen Reserve Tennis Club			◆
Shepparton Little Athletics Association		◆	
Greater Shepparton Basketball Association	◆		
Celtics Basketball Club		◆	
Shepparton Cycling Club			◆
Shepparton Netball Association			◆
North Victorian Showjumping Club		◆	

Question 7 asked whether the facilities that groups use were adequate for their needs, and there was an opportunity for clubs/ groups to include any comments regarding their adequacy or inadequacy. The results are compiled in Table 3. The information in the table is from the survey responses only.

Table 3 – Adequacy of Existing Facilities

Club/ Organisation	Yes	No	Only some are adequate	Comments
GV Suns Soccer Club			◆	Changerooms in main pavilion are too small. Player race in main pavilion needs to be separated from the public toilets. Would like spectator shelter on the far side of the main pitch. Player boxes look into the setting sun in summer.
Shepparton Junior Soccer Association	◆			
Shepparton United Soccer Club	◆			
Goulburn Valley Hockey Association			◆	The Loma Tingay Pavilion is not adequate to service two hockey pitches, as it only has two changerooms. The multipurpose pitch has inadequate lighting, spectator and player shelter and no scoreboard.
Mooroopna Hockey Club		◆		There are no dugouts on the multipurpose pitch. The changeroom/ toilet facilities are inadequate when two games are being played concurrently. The Loma Tingay Pavilion needs upgrading.
Shepparton Strikers Hockey Club	◆			
Shepparton Table Tennis Association	◆			
McEwen Reserve Tennis Club			◆	The courts need resurfacing, fences need upgrading, lighting needs upgrading, and the clubroom needs refurbishment.
Shepparton Little Athletics Association			◆	The facility needs shade trees, a purpose-built pavilion, more seating areas and floodlights. The track configuration needs to be upgraded to host senior state competition - the front straight needs to be rectified for the 110m Hurdles finish, there needs to be pole vault run-ups and pits added, a steeplechase water jump added, and a new hammer throw cage.
Greater Shepparton Basketball Association			◆	Seating for spectators is limited on 3 of the 4 courts. Additional courts are required, as clubs are required to train in other venues and the cost of court hire is very expensive in these satellite venues.
Celtics Basketball Club			◆	
Shepparton Cycling Club		◆		The facility requires the floodlights to be converted to LED lights. Other upgrades include increased shade for spectators, a canteen refurbishment, fence replacement to improve security, and installation of security CCTV cameras. A new pavilion and grandstand on the northern side could be shared with the BMX Club and potentially the Northern Victorian Showjumping Club. Also needs environmental shading and landscaping on the western boundary.
Shepparton Netball Association	◆			Would like an indoor court to assist with attracting more senior players. Player and spectator shelters are required. Additional provision for player/ umpire changerooms is required.
North Victorian Showjumping Association		◆		There are no shower facilities, and limited toilet facilities.

#### 4 Sports City User Groups - Meetings

In-person meetings were conducted with relevant Council staff, and were offered to each of the key stakeholder groups using Shepparton Sports City (excluded individual basketball clubs in lieu of the peak body role played by the Greater Shepparton Basketball Association).

The date when meetings were conducted and attendees are listed in the table below.

Date	Stakeholder Group	Participants
9 March 2021	GV Suns Soccer Club	Paul Uniacke
	Shepparton Junior Soccer Association	Peter Hill Karen Hocking
	Shepparton Cycling Club	Wendy Abbott
	Shepparton Netball Association	Tracey Toy Jan Davies Sue O'Meara John Hoomweg
10 March 2021	Shepparton South Soccer Club	Gino Cirilo Josie Logan
	Greater Shepparton Basketball Association	Simon Mills Steve Wilson (Council)
	Shepparton Badminton Association	John Pettigrew
	GV Wheelchair Athletics Club	Evan Gaskin
	Shepparton Table Tennis Association	Josh Lee
	Shepparton Little Athletics Association	Aileen Zanelli Tino Catania Alastair McLeod
11 March 2021	Goulburn Valley Hockey Association Mooroopna Hockey Club	Cameron Druitt Lindi Cardamone
	McEwen Reserve Tennis Club	Ayden Graham Greg
	Shepparton BMX Club	Deanne McNair Louise Renato
	North Victorian Showjumping Association	Stuart Abrahams

A summary of the input received from the user group meetings is outlined below.

Stakeholder Group	Summary of Feedback/ Input
<b>GV Suns Soccer Club</b>	<p>When hosting elite games the changerooms are required to be locked off to the public, which then becomes an issue for access to the public toilets; there is no access to public toilets pre-game, half time and post-match.</p> <p>The changerooms are too small, and there are not enough seats for all the players. The junior teams can cope with the smaller rooms, however the seniors, and U19 and U21 teams have been opening the roller door for more space.</p> <p>The Club would like to extend the terrace at the northern end of the main pavilion to include shade and casual seating.</p> <p>The Club would like to use the changerooms in the Murray Slee Pavilion for the U19 and U21 teams. This would leave the main pavilion changerooms for the senior teams.</p> <p>There are very low numbers of girls playing soccer in Shepparton.</p> <p>The Club rarely uses the multipurpose synthetic pitch.</p> <p>The canteen revenue is reduced because the juniors use the soccer pitches to the north, a distance from the canteen.</p> <p>The Club would like spectator shelter on the far side of the main pitch.</p> <p>The player boxes are an issue as after 5pm; the players are looking into the sun (especially in the summer).</p>
<b>Shepparton Junior Soccer Association</b>	<p>All soccer pitches are required in order to accommodate all teams. The quality of the pitches is very good.</p> <p>Likely that the SJSA will need access to additional pitches in the future. Potential to fence multi-purpose Pitch 3.</p> <p>The SJSA has a 12 month lease on the small northern pavilion. Some issues with the pavilion include:</p> <ul style="list-style-type: none"> <li>- The Showjumping Club uses the showers during events, which is a potential security/ safety issue for referees and young players when soccer is operating.</li> <li>- The swipe card system is not operational.</li> <li>- Security cameras are required around the pavilion.</li> <li>- Players don't typically use the changerooms; they are mainly used by game leaders and referees. Team gatherings/ meetings pre-match are held outside, therefore the supply of outdoor shelters could be increased.</li> <li>- The kitchen benches need to be raised to a higher level to be operational, and a deep commercial sink is required.</li> </ul> <p>The SJSA will utilise the recently completed combined storage shed for off-season storage, as it is too far away for daily/ weekly use. Additional game day storage needs to be close to the pavilion. A secure goal storage compound could be provided at the northern end of the soccer precinct.</p> <p>Game day parking is an issue; there is sufficient parking across the whole precinct, however parents want to park close to the pitches.</p> <p>Player and spectator shelters are required for Pitches 1 and 2 (could cover the walkway between the pitches), and shelter is required on the eastern side of the northern pitches.</p> <p>Support the improvement of the public thoroughfare between the soccer precinct and the Rumbalara Football Netball Club facility.</p>

Stakeholder Group	Summary of Feedback/ Input
<b>Shepparton South Soccer Club</b>	<p><u>Facility Usage</u></p> <ul style="list-style-type: none"> <li>- Sundays - senior men, senior women, and U18 teams (Bendigo Amateur Soccer League).</li> <li>- Saturdays - junior teams play in the Shepparton Junior Soccer Association.</li> <li>- Use Main Pitch 2 for senior men, senior women, and reserves.</li> <li>- Use Multipurpose Pitch 2 for U18s.</li> </ul> <p>Drainage is not good enough.</p> <p>The number of available soccer pitches is adequate.</p> <p>There is a lot of conflict between clubs rather than the GV Suns being a pathway team. Management issues need to be resolved as the Club would like access to the main pavilion and Main Pitch 1:</p> <ul style="list-style-type: none"> <li>- Main Pitch 1 is fully booked by the GV Suns prior to the other league fixtures being released, therefore they miss out on using Main Pitch 1.</li> <li>- There has been no user agreement established for the use of the main pavilion.</li> </ul> <p>The small pavilion needs additional social space and changerooms, and increased spectator shelter is required throughout the soccer precinct.</p> <p>Storage is okay.</p> <p>Parking is a big problem.</p>
<b>Shepparton Sports Stadium/ Greater Shepparton Basketball Association</b>	<p>Council manage the Shepparton Sports Stadium and all courts are available for hire. Each of the tenant sport groups has traditional times of hire, with general usage of the Stadium courts being:</p> <ul style="list-style-type: none"> <li>- Basketball x 4 nights</li> <li>- Badminton x 1 night</li> </ul> <p>There hasn't been much shift in these times over the past 25 years and the groups seem happy with their arrangements. There has been futsal in the past.</p> <p>Approx. 260,000 people come through the Stadium each year.</p> <p>Basketball operations and issues/ opportunities:</p> <ul style="list-style-type: none"> <li>- Greater Shepparton Basketball Association's main season is conducted during summer, and the representative program is the Shepparton Gators.</li> <li>- Participation numbers are stable in basketball, and it is difficult to recruit sufficient referees.</li> <li>- Basketball clubs are aligned with schools, which works well, and source their own training venues, usually at schools.</li> <li>- There is no paid General Manager/ Competitions Manager presently. In the past the GSBA had paid staff in these roles, however was not financially sustainable.</li> <li>- The GSBA lease and operate the canteen.</li> <li>- The GSBA conducts a junior tournament in December each year using 14 local courts in the surrounding region</li> <li>- Basketball Victoria run an Aussie Hoops program at the stadium.</li> </ul> <p>There is funding allocated for design development of the Shepparton Sports Stadium to convert the facility into a sports and events centre.</p>

Stakeholder Group	Summary of Feedback/ Input
<b>Shepparton Badminton Association</b>	<p><u>Centre Usage</u></p> <ul style="list-style-type: none"> <li>- March to September - winter competition (Tuesday nights is senior and Friday nights is juniors).</li> <li>- October to December - social competition, with social practice on Sundays.</li> </ul> <p>There has been a general trend towards social play rather than competition participation.</p> <p>Membership is stable, but there is more badminton being played than ever before.</p> <p>16 courts will satisfy demand, the key is being able to access the courts earlier on Friday nights for junior participation.</p> <p>The Club does all the set-up of the courts.</p> <p>The Club hosts a tournament once a year on the second weekend in February, which attracts approximately 350 players.</p> <p>Security lighting could be improved from the Stadium to the car park.</p> <p>Visy Stadium is important for the club and needs to be retained.</p>
<b>Shepparton Table Tennis Association</b>	<p><u>Centre Usage</u></p> <ul style="list-style-type: none"> <li>- Monday evening – competition</li> <li>- Thursday evening – training</li> <li>- Two weekday morning sessions</li> </ul> <p>The Association is working on recruiting more juniors.</p> <p>The current room for table tennis is small and accommodates 6 tables.</p> <p>Suggestions for the current plans for the redevelopment of the Shepparton Sports Stadium:</p> <ul style="list-style-type: none"> <li>- The planned multipurpose room needs to be configured so that it fits table tennis courts, ie. the room would be better squared off. The overall size of the space could be bigger, as ideally the STTA would like to accommodate 8-12 tables.</li> <li>- A good wooden floor would be adequate for table tennis.</li> <li>- Lighting lux levels and roof height needs to be appropriate for table tennis.</li> <li>- Storage needs to be provided to accommodate at least 6 tables, court dividers, spare bats, equipment moving machines, and spare tables.</li> </ul>
<b>Goulburn Valley Wheelchair Athletics Club</b>	<p>The Club mainly plays basketball on Tuesday nights for 1.5 hours and has about 12 participants.</p> <p>The Club competes in approximately 4 tournaments a year in regional Victorian towns.</p> <p>The current Stadium front door is difficult to negotiate by players in played wheelchairs.</p> <p>When designing the new stadium ensure that appropriate space is allowed around the courts for wheelchair storage.</p>

Stakeholder Group	Summary of Feedback/ Input
<b>Shepparton Netball Association</b>	<p><u>Facility Usage</u></p> <ul style="list-style-type: none"> <li>- April to September – main competition season on Saturdays (uses 10-12 courts)</li> <li>- September to December – night competition during the netball off-season (uses 17 courts over 2 timeslots one night per week)</li> </ul> <p>There is an 'All Abilities' Program held on Saturday mornings which has 10-30 participants.</p> <p>Historically, the Saturday competition was a schools based competition, however football netball clubs now enter teams.</p> <p>Football netball club competitions are impacting the Association:</p> <ul style="list-style-type: none"> <li>- Association senior netball participation has decreased</li> <li>- Sourcing umpires is becoming increasingly difficult, as many move to football netball club competitions.</li> </ul> <p>Facility issues/ opportunities:</p> <ul style="list-style-type: none"> <li>- It gets very windy; boundary requires screening/ plantings.</li> <li>- There are no shelters for each court. Perhaps shelters can be erected between light poles.</li> <li>- There are no player/ umpire change facilities. Change facilities are required for players who arrive directly from other activities, or for players who also umpire games.</li> <li>- 15-16 courts are required to still host championships.</li> <li>- The control box needs to be on the corner of the pavilion and elevated so that all courts can be viewed.</li> <li>- The pavilion needs to have more shelter by extending the eaves.</li> <li>- The pavement surface at the front of the pavilion needs to be replaced, and the grass section replaced with paving.</li> <li>- The tree adjacent to the pavilion needs to be removed, as leaf litter causes the courts to become slippery.</li> </ul> <p>The Association requires regular access to indoor courts. The floodlighting is good on all courts. The playground is in a good position. Clubs each have a section within the long storage sheds.</p>
<b>McEwen Reserve Tennis Club</b>	<p>The facility was initially the home of four tennis clubs, but in 2004/05 the clubs amalgamated to form one club.</p> <p><u>Facility Usage</u></p> <ul style="list-style-type: none"> <li>- Monday morning – veterans social</li> <li>- Midweek Ladies</li> <li>- Friday evenings – night competition</li> <li>- Saturday – pennant competition (five teams)</li> </ul> <p>There has been a steady decrease in junior teams and midweek ladies. The Club has experience difficulty to get a night competition going. Three tennis associations continue to have their home base at McEwen Reserve, and use the facility for finals. All 12 courts are used when hosting finals. Main facility upgrades required are to resurface all courts, new fencing (black PVC), new landscaping, and clubhouse upgrade.</p>

Stakeholder Group	Summary of Feedback/ Input
<b>Shepparton Little Athletics Association</b>	<p>The recently completed facility redevelopment was initially going to include a new track, new pavilion and lighting, however, the synthetic track and the long and triple jump pits were the only projects delivered.</p> <p>Issues with the track:</p> <ul style="list-style-type: none"> <li>- The 110m hurdles markings are incorrect and have required an alternate finish line to be installed 5 metres beyond the main finish line.</li> <li>- The aluminium inside running rail has not been installed.</li> <li>- The track surface colour has faded.</li> <li>- The line markings for the 4 x 200 metre relay break line are incorrect.</li> <li>- Corellas are damaging the track.</li> </ul> <p>Facilities/ infrastructure still required:</p> <ul style="list-style-type: none"> <li>- To complete the trackside fencing, in particular at the long and triple jumps.</li> <li>- Discus/ hammer cage at east end.</li> <li>- Steeplechase water jump.</li> <li>- Pole vault pits and run-ups.</li> <li>- Facility perimeter fence needs replacement/ repair.</li> <li>- A new pavilion with changerooms and amenities, a canteen, and meeting room is required.</li> <li>- Concrete spectators terraces with shelter along the home straight.</li> </ul>
<b>Goulburn Valley Hockey Association Mooroopna Hockey Club</b>	<p>There are 6 clubs in the Shepparton Hockey Association. Clubs that train and are based at Sports City are Mooroopna Hockey Club, Shepparton Strikers Hockey Club, and Shepparton Youth Club Hockey Club.</p> <p><u>Facility Usage</u></p> <ul style="list-style-type: none"> <li>- Friday nights – 2 games</li> <li>- Saturdays Pitch 1 – 9.00am to 7.00pm</li> <li>- Saturdays Pitch 2 (multipurpose pitch) – 9.00am to 5.00pm</li> <li>- Sundays – occasional Inter-League matches</li> </ul> <p>The facility hosts a Premier League game each year which is a great promotion for hockey in Shepparton.</p> <p><u>Facility Issues</u></p> <ul style="list-style-type: none"> <li>- Pitch 2 (the multipurpose synthetic pitch) has inadequate player shelter and spectator shelters, scoreboard, and floodlights (too low and patchy for night games).</li> <li>- The facility social room is too small for its use.</li> <li>- The canteen needs upgrading.</li> <li>- The facility perimeter fence has many holes and needs ongoing repair.</li> <li>- The Lorna Tingay Pavilion needs upgrading and extending.</li> <li>- Pitch 1 is due to be resurfaced in 2025, and Pitch 2 in 2027.</li> </ul>
<b>Shepparton Cycling Club</b>	<p>The Club uses the DECA land as a criterium circuit, which is satisfactory. A suggestion is to consider installing a criterium circuit at Princes Park which would provide a more challenging course, and would have multiple uses, as it could be used by riders of all ages and abilities, and by walkers and joggers.</p>

Stakeholder Group	Summary of Feedback/ Input
	<p><u>Facility Issues</u></p> <ul style="list-style-type: none"> <li>- Requires retractable shade covering over the seating in front of the pavilion.</li> <li>- Perimeter fencing needs replacing and made more secure.</li> <li>- Upgrade of the floodlights to LED and to 400lux.</li> <li>- Installation sub-surface drainage across the velodrome infield to eliminate water ponding.</li> <li>- Repair of the irrigation pipe under the pavilion to enable the track infield to be irrigated.</li> <li>- The Club supports in principle the development of a joint-use pavilion with the Showjumping Club with a grandstand on both sides to provide showers and toilets for WB Hunter Reserve users, and/or the BMX Club.</li> </ul>
<b>Shepparton BMX Club</b>	<p>The Club is working hard to increase membership. They have bikes and helmets available for come and try days. The track is hired to pro-riders for training.</p> <p><u>Facility Issues</u></p> <ul style="list-style-type: none"> <li>- Security is a big issue for the facility (low fence).</li> <li>- There are no toilets; riders and patrons currently use the velodrome toilets, and pay the Shepparton Cycling Club a fee.</li> <li>- Equipment is stored in a shipping container, and a shipping container is going to be supplied by Council for use as a canteen.</li> <li>- Need 12 volunteers to run an event, which can be difficult for the Club to resource.</li> <li>- Club currently has to pay AusCycling to hire/ use the timing and scoring equipment. The Club has applied for a Council grant to purchase equipment.</li> </ul>
<b>Northern Victorian Show Jumping Club</b>	<p>The Club has been based at WB Hunter Reserve for over 40 years, and has 200 members. Four major events are held each year. The events are held over multiple days with most participants staying overnight at the reserve. Training days are also held regularly. Other regular users are the Shepparton Adult Riding Club (6 events per year) and the Shepparton Pony Club.</p> <p><u>Facilities</u></p> <p>The general layout of the reserve is working well. There are 48 powered sites, however the Club would like to increase the number of powered sites to 60, and relocate some bollards. Currently, the Club hires a generator for its events to power the additional 15 sites with power.</p> <p>Sand Arena – the Club plans to replace the sand arena fence with a higher fence, needs power supplied to the Judges Box, and the facility requires spectator shelter.</p> <p>Main Arena – this arena has an excellent surface and is of a standard to host Australian Championships. However, the adjacent/ support arenas and facilities are not to an acceptable standard. Spectator seating could be increased for the Main Arena.</p> <p>Horse Watering Area – there is one horse washdown area, and the Club requires a second one.</p>

Stakeholder Group	Summary of Feedback/ Input
	<p>Horse Yards – shelter/ shade is required over the horse yards. Amenities – there are no showers onsite to service people staying overnight during events. Currently, the small soccer pavilion amenities are used, however, this is not close and access restrictions imposed when they are being used soccer clubs creates an unsustainable outcome.</p>

## 5 Other Stakeholder Groups

In-person meetings and interviews were conducted with other stakeholders that have either an indirect use of Sports City or work with clubs and groups that are users of Sports City.

The date when meetings and interviews were conducted are noted in the table below, and the people consulted.

Date	Stakeholder Group	Participants
5 March 2021	Greater Shepparton City Council Staff	Tim Zak Katie Wallace Steve Wilson Anthony Nicolaci Colin Kalms Nick Maple
10 March 2021	Valley Sport	Kayla Ryan Nattalie Joinbee David Quinn
11 March 2021	AFL Goulburn Murray	Jamie Macri
	Department of Education	David Cummings
11 October 2021	Munarra Centre for Regional Excellence	Allan Laurie, Chief Executive Officer, MCRE Travis Morgan, Manager MCRE/ Rumbalara FNC Jesse Robson, MCRE Project (DPC) Phil David, MCRE Project (Urban Neighbourhoods)

A summary of the input received from other stakeholders is outlined below.

### Valley Sport

Valley Sport is a government funded Regional Sport Assembly, with the aim to support sporting clubs and work with local government and other organisations to promote sports participation. They do some sport delivery as well, however generally partner with a club/ association as a strategy to support sustainable and ongoing delivery of programs.

Visy Stadium is required to be retained, as it has high levels of after school use, a dance group use the dance studio, and there is a netball competition conducted on Monday nights.

Observations provided on sports and sporting groups based at Sports City:

- There are challenges for soccer, as there is some conflict between the clubs/ stakeholders. Clubs focus heavily on their senior men's teams, and the culture is not appealing to women and girls.
- Junior pathways are disjointed in many of the sports based at Sports City, however, Athletics is doing well with juniors, and now there is the emergence of senior athletics.
- Visy Stadium and the construction of the Shepparton Super School could be one strategy to provide Shepparton Netball Association with access to additional indoor courts (as an alternative to using the Shepparton Sports Stadium).
- The McEwen Reserve Tennis Club is struggling; the committee has been there a long time and they need to consider offering tennis differently. The option to consolidate tennis clubs at the McEwen Reserve tennis facility should be considered and create a high quality regional tennis complex.

- The BMX Club has great facilities, however, is a struggling club.
- The Hockey facility is excellent, and the Goulburn Valley Hockey Association has strong governance and manages hockey well, however the clubs are struggling to attract new members.
- The Shepparton Junior Soccer Association is run very well.

### AFL Goulburn Murray

Football participant numbers are down due to COVID-19, especially in Youth Girls and Senior Women. There are currently no Senior Women's teams in Shepparton.

There is currently insufficient football grounds in Shepparton to meet training and competition demand.

The NAIDOC Week Indigenous Football Carnival has been held in Moama in recent years, at a multi oval complex.

An All Abilities Football Program is held in Mooroopna.

### Department of Education

Regarding the future of the Wanganui Campus, it is the intent of the Department of Education (DoE) that it be kept for educational purposes.

DoE is happy for current and future new partnerships to continue with external community groups for their use of Campus facilities, such as the Visy Stadium and the oval. At this stage, the Goulburn Valley Woodworkers and the 1<sup>st</sup> North Shepparton Scouts will remain within their facilities on Wanganui Campus land.

Improved linkages and connections (shared paths) between the Wanganui Campus and Sports City are important, particularly between the Campus and the Main Pavilion, which is utilised by the school.

### Munarra Centre for Regional Excellence

#### Background MCRE

- The Munarra Centre for Regional Excellence (MCRE) will be a national, state-of-the-art centre designed as a hub of connection and transformation for Indigenous and non-Indigenous people across Australia.
- It will provide a home for an expanded Academy for Sports Health and Education as well as the community infrastructure required to acknowledge and celebrate the contributions of Aboriginal people in the Goulburn Murray region. It will embed Aboriginal culture across all curriculum and programs, positioning Indigenous knowledge transfer and cultural exchange in striving for excellence in sports, health sciences and education.
- The MCRE is a collaboration between the Kaiela Institute, Rumbalara Football Netball Club and the University of Melbourne, with funding support from the Victorian Government and land donation from the Greater Shepparton City Council. The MCRE development is fully funded (\$28m) and detailed design works have commenced. It is expected that the construction of the MCRE will be completed by 2025.

#### MCRE and Sports City

- It was agreed that the integrated planning of Sports City and the MCRE should build on opportunities to:
  - enhance the walkability and cyclability throughout the precinct, including potential public paths connecting Sports City Drive, the MCRE, the Rumbalara FNC facility, and the Multipurpose Sports Fields precinct.
  - celebrate aboriginal heritage, culture and history as part of the arrival experience to Sports City from the Goulburn Valley Highway past the stadium and the athletics track.



- reflect more of the local cultural identity, possibly through the naming of areas and/or streets throughout Sports City to reflect local aboriginal culture or names. Also, public art could be used to reflect traditional ownership and connections to country.
- create a plaza/ place of assembly at the interface of the MCRE entrance and the southern car park.

#### Rumbalara FNC Facility and Sports City

- Rumbalara FNC was formed in the 1950s, and became a member of the Murray League in 1997. The Club comprises:
  - 5 football teams: Seniors, Reserves, U17s, U14s, Senior Womens
  - 8 netball teams: Seniors (A, B, C, C-Reserve), U17s, U15s, U13s, U11s and a NetSetGo program.
- The Club also coordinates and delivers a range of community education, health and support programs and services for its people, which are conducted from the clubroom facilities.
- The Club has partnerships with the Melbourne Vixens and the Richmond Football Club, which it hopes will enable future pre-season practice matches to be played by these clubs at the Rumbalara FNC facility.
- The Club has no summer sporting uses of the reserve, however, does enable other clubs and groups to use the facilities, eg. soccer tournaments, an Indian community sports festival.
- The Rumbalara Football Netball Club facility has received \$4m - \$5m for its redevelopment and upgrade, as part of the broader MCRE development. Upgrade projects include:
  - upgraded and expanded clubrooms and social spaces
  - new netball courts
  - new spectator shelters
  - new car parking
  - upgraded oval floodlights
  - new playground and active recreation space.
- The Club supports improved pedestrian/ cycle connections between the Rumbalara FNC facility and the Multipurpose Sports Fields to the west.
- The Club would like the Sports City Master Plan Refresh to also incorporate accessibility and amenity upgrades along Mercury Drive, being the key access into the Rumbalara FNC facility (it was explained that Mercury Drive was outside of the scope for this master plan project).

## Appendix 1

### Primary Contact with Key Stakeholders Consulted

User Groups	Main Contact	Position
GV Suns Soccer Club	Paul Uniake	Vice President
Shepparton Junior Soccer Association	Karen Hocking	Secretary
Shepparton United Soccer Club	Nathan Sali	President
Shepparton South Soccer Club	Gino Cirillo	President
Goulburn Valley Hockey Association	Cameron Druitt	President
Mooroopna Hockey Club	Lindi Cardamone	President
Shepparton Strikers Hockey Club	Lachlan Russell	President
Shepparton Youth Club Hockey Club	Richard Horton	President
Shepparton Table Tennis Association	Josh Lee	President
McEwen Reserve Tennis Club	Ayden Graham	Secretary
Shepparton Little Athletics Association	Aileen Zanelli	President
Greater Shepparton Basketball Association	Simon Mills	Secretary
Goulburn Valley Wheelchair Athletics Club	Evan Gaskin	Committee
Shepparton Badminton Association	John Pettigrew	President
Northern Victorian Show Jumping Club	Stuart Abrahams	President
Shepparton Netball Association	John Hoornweg	Administrator
Shepparton BMX Club	Deanne McNair	President
Shepparton Cycling Club	Wendy Abbott	President
Other Stakeholders	Main Contact	Position
Valley Sport	David Quinn	Executive Officer
AFL Goulburn Murray	Jamie Macri	General Manager
Department of Education	David Cummings	Regional Manager
Munarra Centre for Regional Excellence	Allan Laurie	Chief Executive Officer
Rumbalara Football Netball Club	Travis Morgan	Manager

## Appendix 2

### Online Sporting Clubs Survey




### Shepparton Sports City Master Plan Refresh User Group Survey

The Greater Shepparton City Council is reviewing and updating the 2013 Shepparton Sports Precinct Master Plan. This is necessary as many improvement projects recommended in the 2013 plan have now been completed, and since that plan there has been a significant increase in female sports participation, the population of the municipality continues to grow, and there has been some site specific planning undertaken for some facilities within the larger precinct.

All user groups are being encouraged to complete this questionnaire to provide some base data about the group, and some preliminary feedback on the adequacy or otherwise of facilities within Shepparton Sports City being utilised by the group. The information will be reviewed by the consultant team prior to them meeting with groups in the next month when there will be an opportunity to further elaborate on the information provided.

The survey should only take 5 minutes to complete.

 **Shepparton Sports City Master Plan Refresh User Group Survey**

**1. What is the name of your club/organisation?**

Other (please specify)

**2. Who in your organisation should be the main contact person for all future enquiries and involvement regarding this project?**

Name

Position

Email

Mobile

**3. How many active members did your group have in its 2019 season (pre-COVID)? Please complete the boxes below indicating total membership, and also the breakdown of gender and age.**

Total active membership

Males

Females

Junior (U/18yrs)

Open Age (18+yrs)

2

**4. How many teams did your group have in its 2019 season? Please insert the total number of teams and the number for each category. If 'teams' does not apply to your group then skip this question.**

Total number of teams

Senior mens teams

Senior womens teams

Senior mixed gender teams

Boys teams

Girls teams

Junior mixed gender teams

**5. Has your group's active membership been generally stable, increasing or declining for the past five years?**

Stable

Increasing

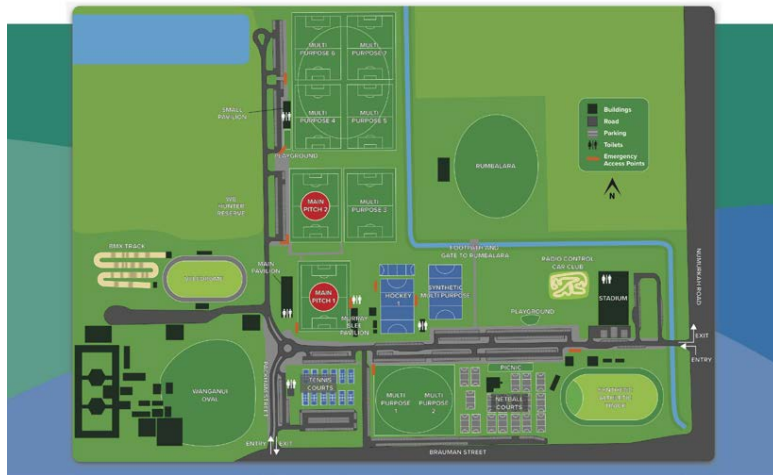
Declining

Comments

3

Below is an image showing the Shepparton Sports City facilities to assist in answering the next question.

**SHEPPARTON SPORTS PRECINCT** GREATER SHEPPARTON



6. What facilities does your group mainly use at Shepparton Sports City? (Includes fields of play, pavilions and stadium)

Other (please specify)

7. Are the facilities selected in Question 6 adequate for your group's needs?

- Yes
- No
- Only some are adequate

Comments

8. Please provide any other comments regarding the Shepparton Sports City Precinct, including any key issues or opportunities that may relate to your group, or to the ongoing usage of the broader precinct by all users.

Shepparton Sports City Master Plan Refresh User Group Survey

Appendix 3

Completed Online Sporting Clubs Surveys

#1

COMPLETE

**Collector:** Web Link 4 (Web Link)  
**Started:** Sunday, January 31, 2021 8:09:59 PM  
**Last Modified:** Sunday, January 31, 2021 8:18:12 PM  
**Time Spent:** 00:08:12  
**IP Address:** 1.136.105.169

Page 2

**Q1** **GV Suns Soccer Club**

What is the name of your club/organisation?

**Q2**

Who in your organisation should be the main contact person for all future enquiries and involvement regarding this project?

Name

Position

Email

Mobile

<b>Q3</b>	Total active membership	<b>140</b>
How many active members did your group have in its 2019 season (pre-COVID)? Please complete the boxes below indicating total membership, and also the breakdown of gender and age.	Males	<b>135</b>
	Females	<b>5</b>
	Junior (U/18yrs)	<b>95</b>
	Open Age (18+yrs)	<b>45</b>

<b>Q4</b>	Total number of teams	<b>8</b>
How many teams did your group have in its 2019 season? Please insert the total number of teams and the number for each category. If 'teams' does not apply to your group then skip this question.	Senior mens teams	<b>3</b>
	Senior womens teams	<b>0</b>
	Senior mixed gender teams	<b>0</b>
	Boys teams	<b>5</b>
	Girls teams	<b>0</b>
	Junior mixed gender teams	<b>0</b>

**Q5** **Stable**

Has your group's active membership been generally stable, increasing or declining for the past five years?

Shepparton Sports City Master Plan Refresh User Group Survey

Shepparton Sports City Master Plan Refresh User Group Survey

**Q6** **Main Soccer Pitch,**  
 What facilities does your group mainly use at Shepparton Sports City? (Includes fields of play, pavilions and stadium)  
 Other (please specify):  
 main pavilion main 2, mp1 AND 2 AND 3 MUREAY SLEE,  
 MAIN PAVILION

---

**Q7** **Only some are adequate**  
 Are the facilities selected in Question 6 adequate for your group's needs?

---

**Q8** **Respondent skipped this question**  
 Please provide any other comments regarding the Shepparton Sports City Precinct, including any key issues or opportunities that may relate to your group, or to the ongoing usage of the broader precinct by all users.

#2

COMPLETE

**Collector:** Web Link 4 (Web Link)  
**Started:** Monday, February 01, 2021 10:21:00 PM  
**Last Modified:** Monday, February 01, 2021 10:37:04 PM  
**Time Spent:** 00:16:04  
**IP Address:** 122.105.153.166

Page 2

**Q1** **Goulburn Valley Hockey Association**  
 What is the name of your club/organisation?

---

**Q2**  
 Who in your organisation should be the main contact person for all future enquiries and involvement regarding this project?

Name  
 Position  
 Email  
 Mobile

---

**Q3**  
 How many active members did your group have in its 2019 season (pre-COVID)? Please complete the boxes below indicating total membership, and also the breakdown of gender and age.

Total active membership	446
Males	236
Females	210
Junior (U/18yrs)	246
Open Age (18+yrs)	200

---

**Q4**  
 How many teams did your group have in its 2019 season? Please insert the total number of teams and the number for each category. If 'teams' does not apply to your group then skip this question.

Total number of teams	30
Senior mens teams	8
Senior womens teams	8
Junior mixed gender teams	14

---

**Q5** **Declining,**  
 Has your group's active membership been generally stable, increasing or declining for the past five years?  
 Comments:  
 General decrease in numbers of over years

Shepparton Sports City Master Plan Refresh User Group Survey

Shepparton Sports City Master Plan Refresh User Group Survey

**Q6**  
 What facilities does your group mainly use at Shepparton Sports City? (Includes fields of play, pavilions and stadium)

**Hockey 1,**  
 Other (please specify):  
 Hockey Pavilion, Synthetic Multipurpose and "Small Pavilion" (known as Lorna Tingay Pavilion).

**Q7**  
 Are the facilities selected in Question 6 adequate for your group's needs?

**Only some are adequate,**  
 Comments:  
 The "Small Pavilion", known to us as Lorna Tingay Pavilion is not adequate to service 2 hockey pitches as it only provides 2 change rooms. The Synthetic Multipurpose pitch as deficiencies such as adequate lighting, spectator and player shelter and a scoreboard.

**Q8**  
 Please provide any other comments regarding the Shepparton Sports City Precinct, including any key issues or opportunities that may relate to your group, or to the ongoing usage of the broader precinct by all users.

We look forward to improving the amenities of the Synthetic Multipurpose pitch. With this, our use of these facility will increase. We also encourage other user groups to use this facility. We also have concerns of eventual pitch replacement of both Hockey 1 and the Multipurpose pitch, and how this can be planned for and funded.

**#3**

**COMPLETE**

**Collector:** Web Link 4 (Web Link)  
**Started:** Tuesday, February 02, 2021 5:06:23 PM  
**Last Modified:** Tuesday, February 02, 2021 5:16:02 PM  
**Time Spent:** 00:09:38  
**IP Address:** 182.239.215.205

Page 2

**Q1** **Shepparton United Football Netball Club,**  
 What is the name of your club/organisation? Other (please specify):  
 School group user

**Q2**  
 Who in your organisation should be the main contact person for all future enquiries and involvement regarding this project?

Name  
 Position  
 Email  
 Mobile

**Q3** **Respondent skipped this question**  
 How many active members did your group have in its 2019 season (pre-COVID)? Please complete the boxes below indicating total membership, and also the breakdown of gender and age.

**Q4** **Respondent skipped this question**  
 How many teams did your group have in its 2019 season? Please insert the total number of teams and the number for each category. If 'teams' does not apply to your group then skip this question.

**Q5** **Stable,**  
 Has your group's active membership been generally stable, increasing or declining for the past five years? Comments:  
 Not relevant as a school group hence 700 students approximately

Shepparton Sports City Master Plan Refresh User Group Survey

Shepparton Sports City Master Plan Refresh User Group Survey

**Q6** **Shepparton Sports Stadium**

What facilities does your group mainly use at Shepparton Sports City? (Includes fields of play, pavilions and stadium)

**Q7** **No,**

Are the facilities selected in Question 6 adequate for your group's needs?

Comments:

Non compliance with court sizes and run off, surface in winter has condensation due to age and quality of roof, air con sub standard, lightning poor, change rooms old. Staff fantastic facilities old and run down

**Q8**

Please provide any other comments regarding the Shepparton Sports City Precinct, including any key issues or opportunities that may relate to your group, or to the ongoing usage of the broader precinct by all users.

Needs a much larger stadium to cater for all year round multi purpose use... especially with pressure of super schools. I have concerns we will miss out on use of these facilities. Concerning also is the age and netball court club room facilities. Lack of access to public toilets when using areas due to management of toilets cleaning etc. access to aths teach should be available for all users like at lake side with a tuur style, lack of catering for other shared club room space ie aths stadium and netball should have combined with a multi purpose building clubhouse to eliminate users toileting behind trees

#4

COMPLETE

**Collector:** Web Link 4 (Web Link)  
**Started:** Saturday, February 06, 2021 9:05:34 PM  
**Last Modified:** Saturday, February 06, 2021 9:24:21 PM  
**Time Spent:** 00:18:47  
**IP Address:** 144.138.111.157

Page 2

**Q1** **Shepparton Table Tennis Association**

What is the name of your club/organisation?

**Q2**

Who in your organisation should be the main contact person for all future enquiries and involvement regarding this project?

Name

Position

Email

Mobile

**Q3** **Total active membership 45**  
**Males 39**  
**Females 6**  
**Junior (U/18yrs) 2**  
**Open Age (18+yrs) 43**

How many active members did your group have in its 2019 season (pre-COVID)? Please complete the boxes below indicating total membership, and also the breakdown of gender and age.

**Q4** **Total number of teams 28**  
**Senior mixed gender teams 28**

How many teams did your group have in its 2019 season? Please insert the total number of teams and the number for each category. If 'teams' does not apply to your group then skip this question.

**Q5** **Declining**

Has your group's active membership been generally stable, increasing or declining for the past five years?



Shepparton Sports City Master Plan Refresh User Group Survey

Shepparton Sports City Master Plan Refresh User Group Survey

**Q6** **Shepparton Sports Stadium**

What facilities does your group mainly use at Shepparton Sports City? (Includes fields of play, pavilions and stadium)

---

**Q7** **Yes**

Are the facilities selected in Question 6 adequate for your group's needs?

---

**Q8** **Respondent skipped this question**

Please provide any other comments regarding the Shepparton Sports City Precinct, including any key issues or opportunities that may relate to your group, or to the ongoing usage of the broader precinct by all users.

---

#5

**COMPLETE**

**Collector:** Web Link 4 (Web Link)  
**Started:** Monday, February 08, 2021 11:20:41 AM  
**Last Modified:** Monday, February 08, 2021 4:01:56 PM  
**Time Spent:** 04:41:14  
**IP Address:** 121.208.214.73

Page 2

**Q1** **Mooroopna Hockey Club**

What is the name of your club/organisation?

---

**Q2**

Who in your organisation should be the main contact person for all future enquiries and involvement regarding this project?

Name

Position

Email

Mobile

---

<b>Q3</b>	Total active membership	<b>55</b>
	Males	<b>25</b>
	Females	<b>30</b>
	Junior (U/18yrs)	<b>35</b>
	Open Age (18+yrs)	<b>20</b>

---

<b>Q4</b>	Total number of teams	<b>8</b>
	Senior mens teams	<b>2</b>
	Senior womens teams	<b>2</b>
	Junior mixed gender teams	<b>4</b>

---

**Q5** **Declining,**

Has your group's active membership been generally stable, increasing or declining for the past five years? **Comments:**

Only slightly

---

Shepparton Sports City Master Plan Refresh User Group Survey

Shepparton Sports City Master Plan Refresh User Group Survey

**Q6** **Hockey 1,**  
 What facilities does your group mainly use at Shepparton Sports City? (Includes fields of play, pavilions and stadium)  
 Other (please specify):  
 Hockey pavilion, synthetic multi purpose

---

**Q7** **No,**  
 Are the facilities selected in Question 6 adequate for your group's needs?  
 Comments:  
 There are no dug outs on the multi purpose pitch and the change rooms/toilet facilities are now not big enough when 2 games are being played. For example, if men are using the change rooms, women are unable to use toilets. The Lorna Tingay pavilion also needs upgrading.

---

**Q8**  
 Please provide any other comments regarding the Shepparton Sports City Precinct, including any key issues or opportunities that may relate to your group, or to the ongoing usage of the broader precinct by all users.  
 We would love a bigger social function area or hub as it currently doesn't fit one club let alone an association get together. I believe the GVHA had to fund this. Security at night is also an issue. We have been broken into multiple times.

**#6**  
**COMPLETE**  
**Collector:** Web Link 4 (Web Link)  
**Started:** Tuesday, February 09, 2021 7:34:42 PM  
**Last Modified:** Tuesday, February 09, 2021 7:44:20 PM  
**Time Spent:** 00:09:37  
**IP Address:** 120.147.20.116

Page 2

**Q1** **McEwen Reserve Tennis Club**  
 What is the name of your club/organisation?

---

**Q2**  
 Who in your organisation should be the main contact person for all future enquiries and involvement regarding this project?  
 Name  
 Position  
 Email

---

**Q3**  
 How many active members did your group have in its 2019 season (pre-COVID)? Please complete the boxes below indicating total membership, and also the breakdown of gender and age.

Total active membership	100
Males	50
Females	50
Junior (U/18yrs)	20
Open Age (18+yrs)	80

---

**Q4**  
 How many teams did your group have in its 2019 season? Please insert the total number of teams and the number for each category. If 'teams' does not apply to your group then skip this question.

Total number of teams	13
Senior womens teams	3
Senior mixed gender teams	7
Junior mixed gender teams	3

---

**Q5** **Declining**  
 Has your group's active membership been generally stable, increasing or declining for the past five years?

---

**Q6** **Tennis Courts,**  
 What facilities does your group mainly use at Shepparton Sports City? (Includes fields of play, pavilions and stadium)  
 Other (please specify):  
 Tennis clubrooms

Shepparton Sports City Master Plan Refresh User Group Survey

Shepparton Sports City Master Plan Refresh User Group Survey

**Q7**

Are the facilities selected in Question 6 adequate for your group's needs?

**Only some are adequate,**

Comments:  
Courts needs resurfacing, fences need upgrading, lighting to be repaired and club rooms require refurbishment.

**Q8**

Please provide any other comments regarding the Shepparton Sports City Precinct, including any key issues or opportunities that may relate to your group, or to the ongoing usage of the broader precinct by all users.

With Council consultation, the future plans for this sporting area will need to be identify as there is significant cost to upgrade the facility to enhance player and spectator comfort.

**#7**

**COMPLETE**

**Collector:** Web Link 4 (Web Link)  
**Started:** Friday, February 05, 2021 8:58:08 PM  
**Last Modified:** Monday, February 15, 2021 7:34:07 PM  
**Time Spent:** Over a week  
**IP Address:** 101.181.105.38

Page 2

**Q1**

**Shepparton Little Athletics Association**

What is the name of your club/organisation?

**Q2**

Who in your organisation should be the main contact person for all future enquiries and involvement regarding this project?

Name

Position

Email

Mobile

**Q3**

How many active members did your group have in its 2019 season (pre-COVID)? Please complete the boxes below indicating total membership, and also the breakdown of gender and age.

Total active membership	<b>120</b>
Males	<b>56</b>
Females	<b>64</b>

**Q4**

Respondent skipped this question

How many teams did your group have in its 2019 season? Please insert the total number of teams and the number for each category. If 'teams' does not apply to your group then skip this question.

**Q5**

Has your group's active membership been generally stable, increasing or declining for the past five years?

**Declining,**  
Comments:  
Although this season has seen an increase of 20

Shepparton Sports City Master Plan Refresh User Group Survey

Shepparton Sports City Master Plan Refresh User Group Survey

**Q6 Synthetic Athletic Track**

What facilities does your group mainly use at Shepparton Sports City? (Includes fields of play, pavilions and stadium)

**Q7 No,**

Are the facilities selected in Question 6 adequate for your group's needs?

Comments:

The facility needs more trees for shade especially on the western side. There is no pavilion, only sheds and a toilet block. There is two under cover grassed areas. There needs to be more seating areas. The track needs to be upgraded to be able to host any senior state competition - front straight needs to be rectified for 110m hurdles to enable finish line to be in the right spot, there needs to be pole vault run ups and pits, steeple chase water jump, a new cage for hammer throw. The facility doesn't have any flood lights either.

**Q8**

Please provide any other comments regarding the Shepparton Sports City Precinct, including any key issues or opportunities that may relate to your group, or to the ongoing usage of the broader precinct by all users.

See comments above - the rest of the facilities in the precinct are great.

#8

COMPLETE

**Collector:** Web Link 4 (Web Link)  
**Started:** Monday, February 22, 2021 9:22:08 AM  
**Last Modified:** Monday, February 22, 2021 10:12:54 AM  
**Time Spent:** 00:50:45  
**IP Address:** 120.156.150.4

Page 2

**Q1 Greater Shepparton Basketball Association**

What is the name of your club/organisation?

**Q2**

Who in your organisation should be the main contact person for all future enquiries and involvement regarding this project?

Name

Position

Email

Mobile

<b>Q3</b>	Total active membership	<b>1323</b>
How many active members did your group have in its 2019 season (pre-COVID)? Please complete the boxes below indicating total membership, and also the breakdown of gender and age.	Males	<b>994</b>
	Females	<b>329</b>
	Junior (U/18yrs)	<b>903</b>
	Open Age (18+yrs)	<b>420</b>

<b>Q4</b>	Total number of teams	<b>189</b>
How many teams did your group have in its 2019 season? Please insert the total number of teams and the number for each category. If 'teams' does not apply to your group then skip this question.	Senior mens teams	<b>54</b>
	Senior womens teams	<b>6</b>
	Boys teams	<b>88</b>
	Girls teams	<b>41</b>

**Q5**

Has your group's active membership been generally stable, increasing or declining for the past five years?

**Stable,**

Comments:

Overall, numbers are stable. However, there is a concerning decline in participation of women and 15-18 year-old girls.

Shepparton Sports City Master Plan Refresh User Group Survey

Shepparton Sports City Master Plan Refresh User Group Survey

**Q6**

**Shepparton Sports Stadium**

What facilities does your group mainly use at Shepparton Sports City? (Includes fields of play, pavilions and stadium)

**Q7**

Are the facilities selected in Question 6 adequate for your group's needs?

**Only some are adequate,**

Comments:  
The court facilities are suitable standard for domestic competition. Seating for spectators is limited on 3 of the 4 courts, presenting particular problems in managing the COVID Safe environment. Additional courts would be welcomed as clubs are required to train on other court facilities. The cost of court hire is very expensive, relative to similar venues around the state.

**Q8**

Please provide any other comments regarding the Shepparton Sports City Precinct, including any key issues or opportunities that may relate to your group, or to the ongoing usage of the broader precinct by all users.

An issue that has been brought to the fore during COVID is the lack of public space at the stadium entrance. Over the years, much of the open space originally provided at the front of the building has been given over to various offices, reducing the area to a corridor only. A large open space that enables the free flow of people in and out of the stadium and also provides a space to socialize pre and post games is desirable.

**#9**

**COMPLETE**

**Collector:** Web Link 4 (Web Link)  
**Started:** Monday, February 22, 2021 9:20:51 PM  
**Last Modified:** Monday, February 22, 2021 9:34:37 PM  
**Time Spent:** 00:13:45  
**IP Address:** 1.136.24.193

Page 2

**Q1**

**North Victorian Showjumping Association**

What is the name of your club/organisation?

**Q2**

Who in your organisation should be the main contact person for all future enquiries and involvement regarding this project?

Name  
Position  
Email  
Mobile

**Q3**

How many active members did your group have in its 2019 season (pre-COVID)? Please complete the boxes below indicating total membership, and also the breakdown of gender and age.

Total active membership	<b>450</b>
Males	<b>65</b>
Females	<b>225</b>
Junior (U/18yrs)	<b>160</b>

**Q4**

How many teams did your group have in its 2019 season? Please insert the total number of teams and the number for each category. If 'teams' does not apply to your group then skip this question.

Total number of teams	<b>600</b>
Senior mens teams	<b>100</b>
Senior womens teams	<b>200</b>
Boys teams	<b>100</b>
Girls teams	<b>200</b>

**Q5**

Has your group's active membership been generally stable, increasing or declining for the past five years?

**Increasing,**  
Comments:  
Club getting bigger every year we run 5 shows a year with about 600 riders

Shepparton Sports City Master Plan Refresh User Group Survey

Shepparton Sports City Master Plan Refresh User Group Survey

**Q6** **Velodrome**

What facilities does your group mainly use at Shepparton Sports City? (Includes fields of play, pavilions and stadium)

**Q7** **No,**

Are the facilities selected in Question 6 adequate for your group's needs?

Comments:  
We have No shower and limited toilets not great for a club that has Olympic riders attending

**Q8**

Please provide any other comments regarding the Shepparton Sports City Precinct, including any key issues or opportunities that may relate to your group, or to the ongoing usage of the broader precinct by all users.

Lack of parking for soccer

#10

COMPLETE

**Collector:** Web Link 4 (Web Link)  
**Started:** Tuesday, February 23, 2021 5:46:17 PM  
**Last Modified:** Tuesday, February 23, 2021 5:56:24 PM  
**Time Spent:** 00:10:06  
**IP Address:** 120.158.195.235

Page 2

**Q1** **Celtics Basketball Club**

What is the name of your club/organisation?

**Q2**

Who in your organisation should be the main contact person for all future enquiries and involvement regarding this project?

Name

Position

Email

**Q3** **Total active membership 202**  
**Males 119**  
**Females 64**  
**Junior (U/18yrs) 174**  
**Open Age (18+yrs) 28**

How many active members did your group have in its 2019 season (pre-COVID)? Please complete the boxes below indicating total membership, and also the breakdown of gender and age.

**Q4** **Total number of teams 27**  
**Senior mens teams 4**  
**Senior womens teams 1**  
**Senior mixed gender teams 0**  
**Boys teams 14**  
**Girls teams 8**  
**Junior mixed gender teams 0**

How many teams did your group have in its 2019 season? Please insert the total number of teams and the number for each category. If 'teams' does not apply to your group then skip this question.

**Q5** **Increasing**

Has your group's active membership been generally stable, increasing or declining for the past five years?

Shepparton Sports City Master Plan Refresh User Group Survey

Shepparton Sports City Master Plan Refresh User Group Survey

**Q6** **Shepparton Sports Stadium**

What facilities does your group mainly use at Shepparton Sports City? (Includes fields of play, pavilions and stadium)

**Q7** **Only some are adequate**

Are the facilities selected in Question 6 adequate for your group's needs?

**Q8**  
Please provide any other comments regarding the Shepparton Sports City Precinct, including any key issues or opportunities that may relate to your group, or to the ongoing usage of the broader precinct by all users.

We need more basketball courts, some teams are playing at 9/9.30 at night due to lack of court space and last season a whole age group had to go and play elsewhere because we didn't have the courts to accommodate them.

**#11**

**COMPLETE**

**Collector:** Web Link 4 (Web Link)  
**Started:** Thursday, February 25, 2021 3:51:19 PM  
**Last Modified:** Thursday, February 25, 2021 4:12:36 PM  
**Time Spent:** 00:21:16  
**IP Address:** 202.67.97.175

Page 2

**Q1** **Shepparton Junior Soccer Association**

What is the name of your club/organisation?

**Q2**  
Who in your organisation should be the main contact person for all future enquiries and involvement regarding this project?

Name  
 Email  
 Mobile

**Q3** **Respondent skipped this question**

How many active members did your group have in its 2019 season (pre-COVID)? Please complete the boxes below indicating total membership, and also the breakdown of gender and age.

<b>Q4</b>	Total number of teams	<b>165</b>
How many teams did your group have in its 2019 season? Please insert the total number of teams and the number for each category. If 'teams' does not apply to your group then skip this question.	Senior mens teams	<b>0</b>
	Senior womens teams	<b>0</b>
	Senior mixed gender teams	<b>0</b>
	Boys teams	<b>19</b>
	Girls teams	<b>4</b>
	Junior mixed gender teams	<b>142</b>

**Q5** **Stable,**  
 Comments:  
 It was stable & increasing until COVID hit us!

Has your group's active membership been generally stable, increasing or declining for the past five years?

Shepparton Sports City Master Plan Refresh User Group Survey

Shepparton Sports City Master Plan Refresh User Group Survey

**Q6** **Main Soccer Pitch 2,**  
 What facilities does your group mainly use at Shepparton Sports City? (Includes fields of play, pavilions and stadium)  
 Other (please specify):  
 Multi Purpose Fieds 1, 2, 3, 4, 5, 6 & 7 and Small Pavilion (new)

---

**Q7** **Yes**  
 Are the facilities selected in Question 6 adequate for your group's needs?

---

**Q8** **Respondent skipped this question**  
 Please provide any other comments regarding the Shepparton Sports City Precinct, including any key issues or opportunities that may relate to your group, or to the ongoing usage of the broader precinct by all users.

#12

COMPLETE

**Collector:** Web Link 4 (Web Link)  
**Started:** Sunday, February 28, 2021 7:46:49 AM  
**Last Modified:** Sunday, February 28, 2021 7:54:46 AM  
**Time Spent:** 00:07:56  
**IP Address:** 110.145.63.207

Page 2

**Q1** **GV Suns Soccer Club**  
 What is the name of your club/organisation?

---

**Q2**  
 Who in your organisation should be the main contact person for all future enquiries and involvement regarding this project?

Name  
 Position  
 Email  
 Mobile

---

**Q3**  
 How many active members did your group have in its 2019 season (pre-COVID)? Please complete the boxes below indicating total membership, and also the breakdown of gender and age.

Total active membership	125
Males	120
Females	5
Junior (U/18yrs)	80
Open Age (18+yrs)	45

---

**Q4**  
 How many teams did your group have in its 2019 season? Please insert the total number of teams and the number for each category. If 'teams' does not apply to your group then skip this question.

Total number of teams	9
Senior mens teams	3
Senior womens teams	0
Senior mixed gender teams	0
Boys teams	6
Girls teams	0
Junior mixed gender teams	0

---

**Q5**  
 Has your group's active membership been generally stable, increasing or declining for the past five years?

**Stable,**  
 Comments:  
 GV Suns is a mens/boys soccer club, we do nto have a license to run a womens/girls team, as a regional club we are allowed jnr girls to play with the boys teams,



Shepparton Sports City Master Plan Refresh User Group Survey

**Q6**  
 What facilities does your group mainly use at Shepparton Sports City? (Includes fields of play, pavilions and stadium)

**Main Soccer Pitch,**  
 Other (please specify):  
 MP 1 & 2 & 3 and main 2 murray sree and main pavilion

---

**Q7**  
 Are the facilities selected in Question 6 adequate for your group's needs?

**Only some are adequate,**  
 Comments:  
 most adequate yes, change rooms a touch small for game day, but are workign with council on murray sree renovations to fit snrs club on game day,

---

**Q8**  
 Please provide any other comments regarding the Shepparton Sports City Precinct, including any key issues or opportunities that may relate to your group, or to the ongoing usage of the broader precinct by all users.

synthetic pitch is raised from time to time, but cost of such means to hard, the synthetic pitch mutli purpose for hockey and soccer is not used by soccer at all, the pile is like 22mm, too low for soccer too high for high for hockey, so it works not well for either, this trade off sort of failed really

Shepparton Sports City Master Plan Refresh User Group Survey

**#13**

**COMPLETE**

**Collector:** Web Link 5 (Web Link)  
**Started:** Monday, March 01, 2021 9:35:40 AM  
**Last Modified:** Monday, March 01, 2021 9:38:12 AM  
**Time Spent:** 00:02:31  
**IP Address:** 120.148.42.24

---

Page 2

**Q1** **Shepparton Strikers Hockey Club**  
 What is the name of your club/organisation?

---

**Q2**  
 Who in your organisation should be the main contact person for all future enquiries and involvement regarding this project?

Name  
 Position  
 Email  
 Mobile

---

**Q3** **Respondent skipped this question**  
 How many active members did your group have in its 2019 season (pre-COVID)? Please complete the boxes below indicating total membership, and also the breakdown of gender and age.

---

**Q4**  
 How many teams did your group have in its 2019 season? Please insert the total number of teams and the number for each category.If 'teams' does not apply to your group then skip this question.

Total number of teams	7
Senior mens teams	2
Senior womens teams	1
Senior mixed gender teams	0
Junior mixed gender teams	4

---

**Q5**  
 Has your group's active membership been generally stable, increasing or declining for the past five years?

**Declining,**  
 Comments:  
 Senior womens and juniors over 14

Shepparton Sports City Master Plan Refresh User Group Survey

Shepparton Sports City Master Plan Refresh User Group Survey

**Q6** **Hockey 1**

What facilities does your group mainly use at Shepparton Sports City? (Includes fields of play, pavilions and stadium)

---

**Q7** **Yes**

Are the facilities selected in Question 6 adequate for your group's needs?

---

**Q8** **Respondent skipped this question**

Please provide any other comments regarding the Shepparton Sports City Precinct, including any key issues or opportunities that may relate to your group, or to the ongoing usage of the broader precinct by all users.

---

**#14**

**COMPLETE**

**Collector:** Web Link 5 (Web Link)  
**Started:** Monday, March 01, 2021 9:37:21 AM  
**Last Modified:** Monday, March 01, 2021 9:45:20 AM  
**Time Spent:** 00:07:59  
**IP Address:** 1.152.20.27

---

Page 2

**Q1** **North Victorian Showjumping Association**

What is the name of your club/organisation?

---

**Q2**

Who in your organisation should be the main contact person for all future enquiries and involvement regarding this project?

Name  
 Position  
 Email  
 Mobile

---

**Q3**

Total active membership	<b>400</b>
Males	<b>50</b>
Females	<b>150</b>
Junior (U/18yrs)	<b>200</b>
Open Age (18+yrs)	<b>175</b>

---

**Q4** **Respondent skipped this question**

How many teams did your group have in its 2019 season? Please insert the total number of teams and the number for each category. If 'teams' does not apply to your group then skip this question.

---

**Q5** **Increasing,**

Has your group's active membership been generally stable, increasing or declining for the past five years?

**Comments:**  
 Lots more members great set ip

---

Shepparton Sports City Master Plan Refresh User Group Survey

Shepparton Sports City Master Plan Refresh User Group Survey

**Q6** **WB Hunter Reserve**

What facilities does your group mainly use at Shepparton Sports City? (Includes fields of play, pavilions and stadium)

---

**Q7** **No,**

Are the facilities selected in Question 6 adequate for your group's needs?

Comments:  
Need more toilets and showers we are one of the only sports that brings Olympic rider to town

---

**Q8**

Please provide any other comments regarding the Shepparton Sports City Precinct, including any key issues or opportunities that may relate to your group, or to the ongoing usage of the broader precinct by all users.

Parking for soccer

---

#15

**COMPLETE**

**Collector:** Web Link 5 (Web Link)  
**Started:** Monday, March 01, 2021 1:06:38 PM  
**Last Modified:** Monday, March 01, 2021 1:10:15 PM  
**Time Spent:** 00:03:37  
**IP Address:** 43.247.126.196

Page 2

**Q1** **Shepparton United Soccer Club**

What is the name of your club/organisation?

---

**Q2**

Who in your organisation should be the main contact person for all future enquiries and involvement regarding this project?

Name  
 Position  
 Email  
 Mobile

---

**Q3** **Respondent skipped this question**

How many active members did your group have in its 2019 season (pre-COVID)? Please complete the boxes below indicating total membership, and also the breakdown of gender and age.

---

**Q4** **Respondent skipped this question**

How many teams did your group have in its 2019 season? Please insert the total number of teams and the number for each category. If 'teams' does not apply to your group then skip this question.

---

**Q5** **Respondent skipped this question**

Has your group's active membership been generally stable, increasing or declining for the past five years?

---

Shepparton Sports City Master Plan Refresh User Group Survey

Shepparton Sports City Master Plan Refresh User Group Survey

**Q6** **Multi Purpose Field 4**

What facilities does your group mainly use at Shepparton Sports City? (Includes fields of play, pavilions and stadium)

---

**Q7** **Yes**

Are the facilities selected in Question 6 adequate for your group's needs?

---

**Q8** **Respondent skipped this question**

Please provide any other comments regarding the Shepparton Sports City Precinct, including any key issues or opportunities that may relate to your group, or to the ongoing usage of the broader precinct by all users.

---

## #16

**COMPLETE**

**Collector:** Web Link 5 (Web Link)  
**Started:** Tuesday, March 02, 2021 5:01:25 AM  
**Last Modified:** Tuesday, March 02, 2021 5:22:15 AM  
**Time Spent:** 00:20:50  
**IP Address:** 116.250.174.71

Page 2

**Q1** **Shepparton Netball Association**

What is the name of your club/organisation?

---

**Q2**

Who in your organisation should be the main contact person for all future enquiries and involvement regarding this project?

Name

Position

Email

Mobile

---

**Q3**

How many active members did your group have in its 2019 season (pre-COVID)? Please complete the boxes below indicating total membership, and also the breakdown of gender and age.

Total active membership	<b>1800</b>
Males	<b>0</b>
Females	<b>1800</b>
Junior (U/18yrs)	<b>1600</b>
Open Age (18+yrs)	<b>200</b>

---

**Q4**

How many teams did your group have in its 2019 season? Please insert the total number of teams and the number for each category. If 'teams' does not apply to your group then skip this question.

Total number of teams	<b>116</b>
Senior mens teams	<b>0</b>
Senior womens teams	<b>5</b>
Senior mixed gender teams	<b>0</b>
Boys teams	<b>0</b>
Girls teams	<b>111</b>
Junior mixed gender teams	<b>0</b>

---

**Q5**

Has your group's active membership been generally stable, increasing or declining for the past five years?

**Declining,**  
 Comments:  
 Mainly our afternoon competition has declined

Shepparton Sports City Master Plan Refresh User Group Survey

Shepparton Sports City Master Plan Refresh User Group Survey

**Q6**  
 What facilities does your group mainly use at Shepparton Sports City? (Includes fields of play, pavilions and stadium)

**Netball Courts,**  
 Other (please specify):  
 Netball clubrooms

---

**Q7**  
 Are the facilities selected in Question 6 adequate for your group's needs?

**Yes,**  
 Comments:  
 we do not have an indoor court area, which restricts us conducting competitions for the adults

---

**Q8**  
 Please provide any other comments regarding the Shepparton Sports City Precinct, including any key issues or opportunities that may relate to your group, or to the ongoing usage of the broader precinct by all users.

completion of the master plan.

**#17**

**COMPLETE**

**Collector:** Web Link 5 (Web Link)  
**Started:** Tuesday, March 02, 2021 9:16:48 PM  
**Last Modified:** Wednesday, March 03, 2021 8:48:52 PM  
**Time Spent:** 23:32:04  
**IP Address:** 220.233.193.68

Page 2

**Q1**  
 What is the name of your club/organisation?

**Dragons Basketball Club,**  
 Other (please specify):  
 SHEPPARTON CYCLING CLUB..Facility of Shepparton Velodrome.

**Q2**  
 Who in your organisation should be the main contact person for all future enquiries and involvement regarding this project?

Name  
 Position  
 Email  
 Mobile

**Q3**

Males	<b>58</b>
Females	<b>14</b>
Junior (U/18yrs)	<b>19</b>
Open Age (18+yrs)	<b>53</b>

How many active members did your group have in its 2019 season (pre-COVID)? Please complete the boxes below indicating total membership, and also the breakdown of gender and age.

**Q4**

Total number of teams	<b>1</b>
Senior mens teams	<b>3</b>
Senior womens teams	<b>3</b>
Boys teams	<b>5</b>
Girls teams	<b>15</b>

How many teams did your group have in its 2019 season? Please insert the total number of teams and the number for each category.If 'teams' does not apply to your group then skip this question.

**Q5**  
 Has your group's active membership been generally stable, increasing or declining for the past five years?

**Declining**

Shepparton Sports City Master Plan Refresh User Group Survey

Shepparton Sports City Master Plan Refresh User Group Survey

**Q6** **Velodrome**

What facilities does your group mainly use at Shepparton Sports City? (Includes fields of play, pavilions and stadium)

**Q7**

Are the facilities selected in Question 6 adequate for your group's needs?

**No,**

Comments:

We need upgrading lighting to energy efficient LED lighting. Shading for the spectator grandstand. Canteen needs upgrade...power and hygiene need upgrade. Needs security fencing and security CCTV cameras. We need a new pavilion and grandstand with shower facilities on the northern side to be available to the BMX club also. Also needs environmental shading and manicured landscaping on the western boundary.

**Q8**

Please provide any other comments regarding the Shepparton Sports City Precinct, including any key issues or opportunities that may relate to your group, or to the ongoing usage of the broader precinct by all users.

Would it be possible for council to provide patrolled security to prevent breakins and loitering of individuals with intent.

#18

**COMPLETE**

**Collector:** Web Link 5 (Web Link)  
**Started:** Friday, March 05, 2021 9:33:30 PM  
**Last Modified:** Sunday, March 07, 2021 9:52:11 PM  
**Time Spent:** Over a day  
**IP Address:** 101.161.87.217

Page 2

**Q1** **Shepparton Little Athletics Association**

What is the name of your club/organisation?

**Q2**

Who in your organisation should be the main contact person for all future enquiries and involvement regarding this project?

Name

Position

Email

Mobile

**Q3** **Total active membership 121**  
 How many active members did your group have in its 2019 season (pre-COVID)? Please complete the boxes below indicating total membership, and also the breakdown of gender and age.  
**Males 58**  
**Females 63**  
**Junior (U/18yrs) 121**

**Q4** **Respondent skipped this question**

How many teams did your group have in its 2019 season? Please insert the total number of teams and the number for each category. If 'teams' does not apply to your group then skip this question.

**Q5** **Increasing,**  
 Has your group's active membership been generally stable, increasing or declining for the past five years?  
 Comments:  
 Gradual increase.

Shepparton Sports City Master Plan Refresh User Group Survey

**Q6**

**Synthetic Athletic Track**

What facilities does your group mainly use at Shepparton Sports City? (Includes fields of play, pavilions and stadium)

---

**Q7**

**Only some are adequate,**

Are the facilities selected in Question 6 adequate for your group's needs?

Comments:  
Not fully developed.

---

**Q8**

Please provide any other comments regarding the Shepparton Sports City Precinct, including any key issues or opportunities that may relate to your group, or to the ongoing usage of the broader precinct by all users.

There are private key holders. The fence is inadequate and many are abusing the system by climbing the fence or creating holes in the fence to gain entry.

---