

VAUGHAN ST STREETSCLAPING - CORIO ST TO HOSKIN ST

LANDSCAPE CONCEPT DESIGN

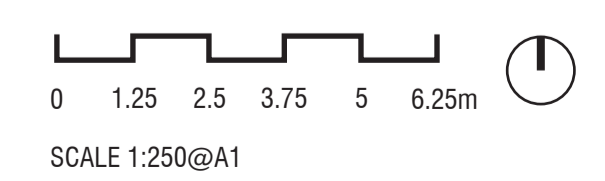


95% COMPLETION

LANDSCAPE CONCEPT

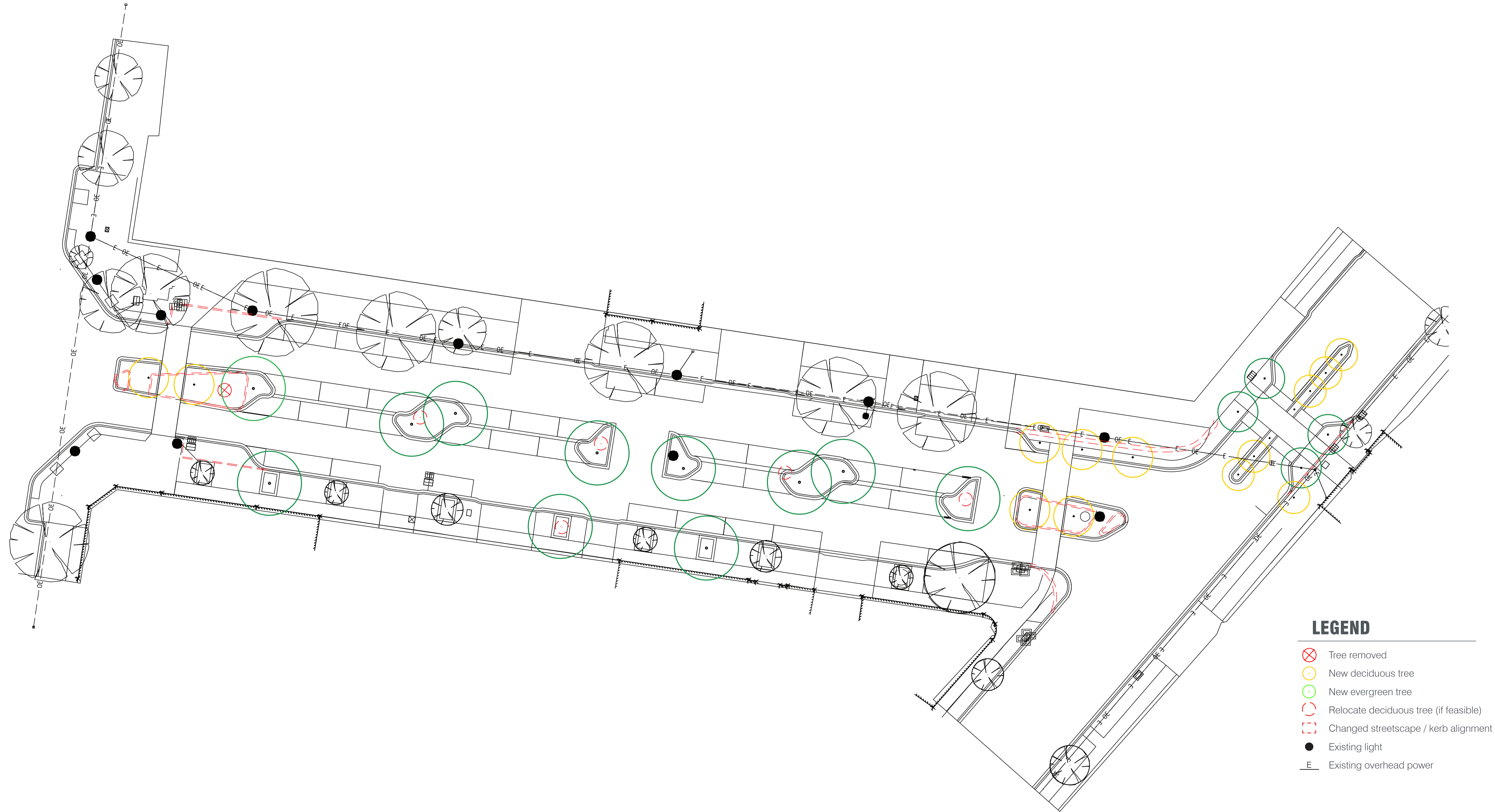
VAUGHAN ST, SHEPPARTON

DRG NO.	REV	DATE	DES/DOC	AUTH	QA
306391 LC100	C	07/01/2020	BD/LG	LG/AL	AL



VAUGHAN ST STREETSCAPING- CHANGED EXISTING CONDITIONS PLANS

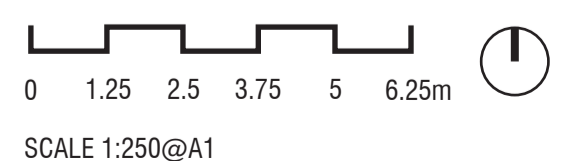
LANDSCAPE CONCEPT DESIGN



95% COMPLETION

LANDSCAPE CONCEPT
VAUGHAN ST, SHEPPARTON

DRG NO.	REV	DATE	DES/DOC	AUTH	QA
306391 LC101	C	07/01/2020	BD/LG	LG/AL	AL



VAUGHAN ST STREETSCLAPING - CORIO ST TO HOSKIN ST

PROJECT THEMES - 'Fruit Industry'



Future Shepparton Railway Station Pedestrian Overpass - Explores the themes of fruit travelling on a conveyor belt.

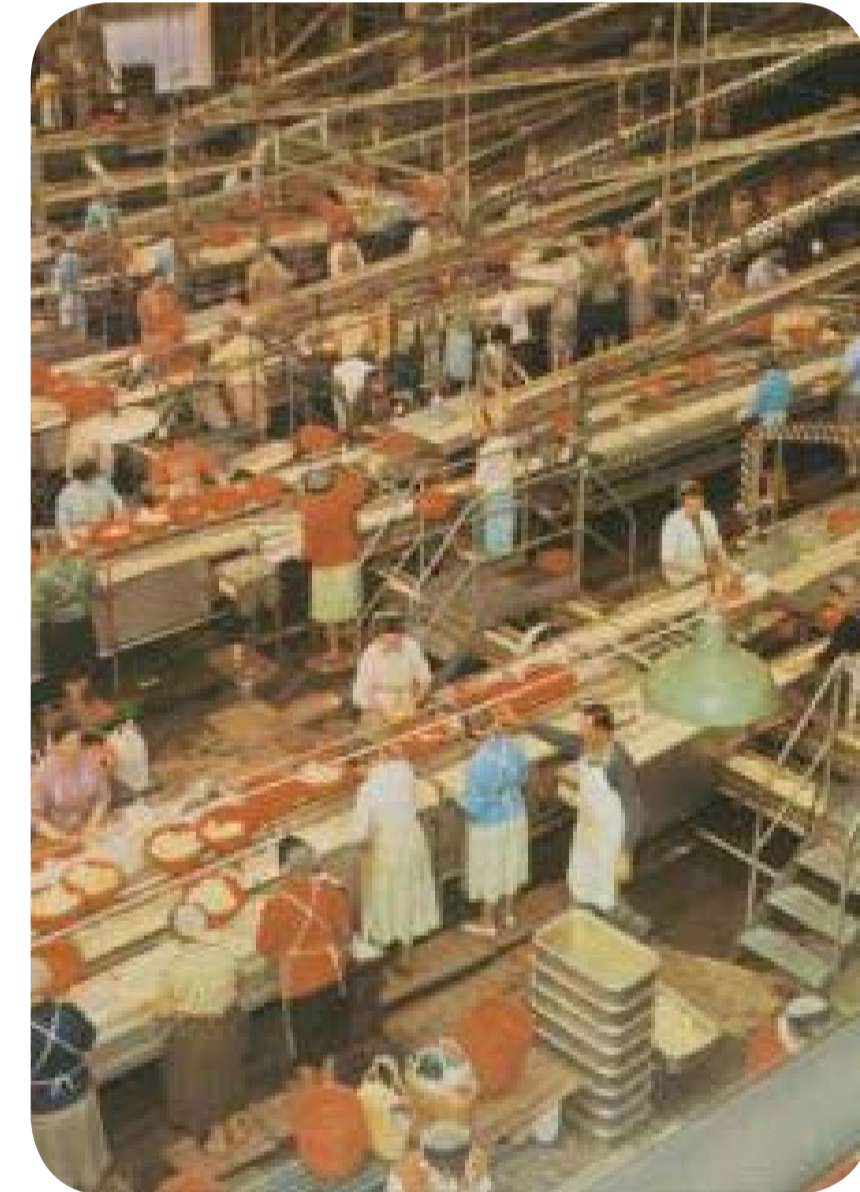
Vaughan Central - Street furniture with Orchard patternings.

DESIGN INTENT

The Vaughan Street Streetscaping Project is bookended by two significant urban design/ infrastructure projects in Shepparton.

Vaughan Central to the west which explores the themes of Retail and Orchards through patterned furniture design and to the East the Future Shepparton Railway Station Pedestrian Overpass explores the fruit industry, through a playful reference to fruit travelling on a conveyor belt.

For the Vaughan Street Streetscaping Project we would like to expand and celebrate the Fruit Industry theme to create a safe, welcoming and vibrant environment for people to travel between the major bus and train public transport nodes and central Shepparton.



95% COMPLETION

PRECEDENT IMAGES
VAUGHAN ST, SHEPPARTON

DRG NO.	REV	DATE	DES/DOC	AUTH	QA
306391 LC102	C	07/01/2020	BD/LG	LG/AL	AL

VAUGHAN ST STREETSCLAPING - CORIO ST TO HOSKIN ST

DESIGN PRINCIPLES - STREETScape LOOK & FEEL



DESIGN PRINCIPLES

It is envisaged that the design of Vaughan Street between Corio and Hoskin Streets will employ a site specific approach in direct response to the site analysis findings and in harmony with the Future Pedestrian Shepparton Railway Station overpass project.

We understand that Vaughan Street is a vital connection for pedestrians/ cyclists, public transport users and vehicles moving in and around Shepparton's City Centre.

The redeveloped streetscape will:

- Prioritise pedestrians/ cyclists movements
- Provide safe and clear access for all streetscape users
- Encourage future retail development/ investment
- Provide urban greening/ cooling through plantings
- Interface with the Shepparton Railway Station overpass plaza
- Incorporate bespoke furniture, paving treatments, installations, street art and lighting on either side of the road and visually connect people with the railway Station and Vaughan Central.
- Provide a place which supports small pop-up businesses/ events
- Provide people with an opportunity to shop, stroll, recreate and meet.
- Maximise car parking offerings

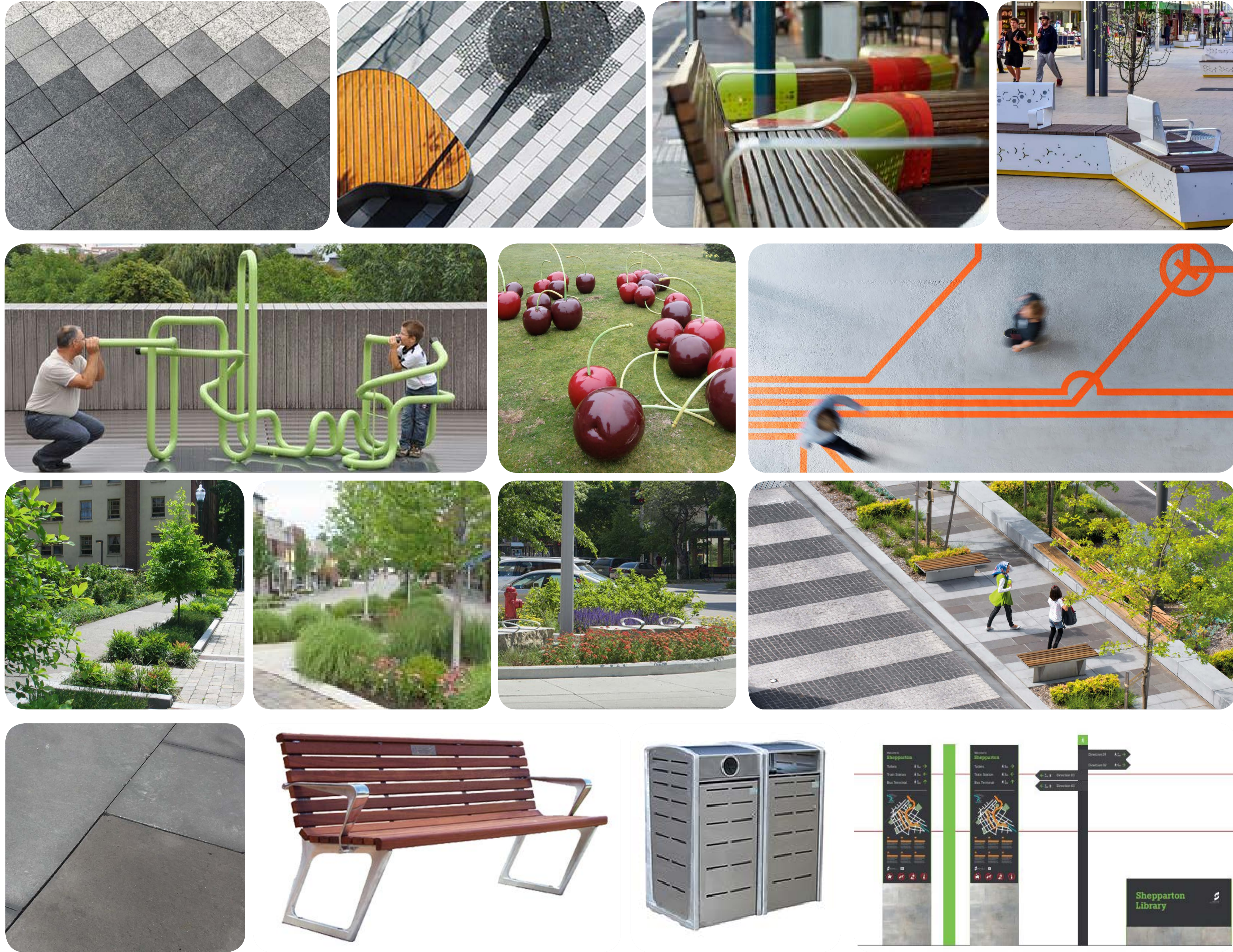
95% COMPLETION

PRECEDENT IMAGES
VAUGHAN ST, SHEPPARTON

DRG NO.	REV	DATE	DES/DOC	AUTH	QA
306391 LC103	C	07/01/2020	BD/LG	LG/AL	AL

VAUGHAN ST STREETSCLAPING - CORIO ST TO HOSKIN ST

PROPOSED MATERIALS AND FINISHES



PRECEDENT IMAGES

Left to right from the top:

- ▶ Custom paving patterns and bespoke parklet seating spaces
- ▶ Artworks, wayfinding, sculpture and lighting
- ▶ WSUD and patterned plantings
- ▶ Greater Shepparton City Council Standard finishes and furniture

95% COMPLETION

PROPOSED MATERIALS & FINISHES
VAUGHAN ST, SHEPPARTON

DRG NO.	REV	DATE	DES/DOC	AUTH	QA
306391 LC104	C	07/01/2020	BD/LG	LG/AL	AL

VAUGHAN ST STREETSCLAPING - CORIO ST TO HOSKIN ST

INDICATIVE SPECIES

TREES



Corymbia citriodora
(Lemon-scented Gum)
Size (HxW): 20 x 8m



Ginkgo biloba 'Princeton Sentry'
(Maidenhair Tree)
Size (HxW): 11x 4m



Pistacio chinensis
(Chinese Pistachio)
Size (HxW): 8 x 6m



Zelkova serrata 'Green Vase'
(Japanese Elm)
Size (HxW): 14 x 10m

SHRUBS



Polygala 'Little Bibi'
(Little Bibi)
Size (HxW): 1.0 x 1.0m



Raphiolepis 'Oriental Pearl'
(Indian Hawthorn)
Size (HxW): 1.5 x 1.0m



Westringia 'Grey Box'
(Coastal Rosemary)
Size (HxW): 0.30-0.45 x 0.3-0.45

GRASSES/
GROUNDCOVERS



Carex appressa
(Sedge)
Size (HxW): 1.0 x 1.0



Casuarina 'Cousin It'
(Cousin It)
Size (HxW) 0.1 x 1.0m



Dianella 'Cassa Blue'
(Flax Lilly)
Size (HxW): 0.5 x 0.4m



Dianella 'Blaze'
(Flax Lilly)
Size (HxW): 0.45 x 0.4-0.5m



Eremophila glabra prostrata 'Silver Spread'
(Silver Spread Emu Bush)
Size (HxW): 0.1 x 1.0m



Kniphofia 'Winter Cheer'
(Red Hot Poker)
Size (HxW): 1.2 x 1.0m



Lomandra 'Shara'
(Matt Rush)
Size (HxW): 0.4 x 0.5m



Westringia 'Mundi'
(Groundcover Coastal Rosemary)
Size (HxW): 0.4-0.5 x 1.5m

95% COMPLETION

INDICATIVE SPECIES
VAUGHN ST, SHEPPARTON

DRG NO.
306391 LC105

REV
C

DATE
07/01/2020

DES/DOC
BD/LG

AUTH
LG/AL

QA
AL