

GREATER SHEPPARTON CITY COUNCIL
BUILDING A BETTER
SHEPPARTON ROAD INITIATIVE



**GREATER
SHEPPARTON**

BACKGROUND

The city of Shepparton is growing and as this growth continues so too does the traffic volumes on the road network.

Two major north-south and east-west arterial roads currently intersect within the centre of Shepparton, namely the Goulburn Valley Highway and the Midland Highway. These arterial roads attract significant traffic volumes through the city.

As the traffic volumes on these roads continue to increase, a number of undesirable impacts are becoming apparent. These include impacts on road safety, amenity, congestion, travel time variability and reducing network resilience.

To counter act this Greater Shepparton City Council in collaboration with Regional Roads Victoria, Major Road Projects Victoria and the Department of Transport are working on a number of intersection upgrades and new link roads to cut down on travel time, make roads safer and ease congestion in and around Shepparton. The intersection upgrades will also support significant government investment in infrastructure projects such as schools and hospitals.

Roads of Strategic Importance Initiative (ROSI)

The Australian Government has provided funding of \$3.5 billion through the Roads of Strategic Importance (ROSI) initiative to improve productivity and efficiency on Australia's key freight roads, providing better connections between agricultural regions and ports, airports and other transport hubs and better access for tourism, mining and other sectors. An additional \$1 billion was allocated to this initiative in the 2019/2020 Federal Budget.

Victoria has been allocated \$160 million under this program from Tocumwal to Seymour. The Council is seeking to secure some of this funding for intersection upgrades on the Goulburn Valley Highway through Shepparton.



Intersection Number	Name	Project	Funding	Cost
1.	Hawkins Street / Numurkah Road	Goulburn Valley Highway Improvements	Federal/ council/developer ROSI	\$2,520,000
2.	Graham Street / Numurkah Road	Goulburn Valley Highway improvements	Federal ROSI	\$1,795,000
3.	Hayes Street / Wyndham Street	Goulburn Valley Highway improvements / Shepparton CBD Inner Eastern Link Road	Federal ROSI	\$1,583,000
4.	Fitzjohn Street / Wyndham Street	Goulburn Valley Highway improvements	Federal/ Council ROSI	\$4,676,000
5.	Hoskin Street / Midland Highway	Shepparton CBD Inner Eastern Link Road	State	\$3,095,000
6.	Fryers Street / Railway Parade	Shepparton CBD Inner Eastern Link Road	State	\$5,500,000
7.	Knight Street / Railway Parade	Shepparton CBD Inner Eastern Link Road	State	\$3,004,000
8.	Hayes Street/ Johnson Street	Shepparton CBD Inner Eastern Link Road	State	\$2,470,000
9.	Fryers Street / Welsford Street	Welsford Street enhancement	State	\$1,834,000
Total				\$26,477,000





1 9 4 0

traffik

KOBELCO

FRYERS ST



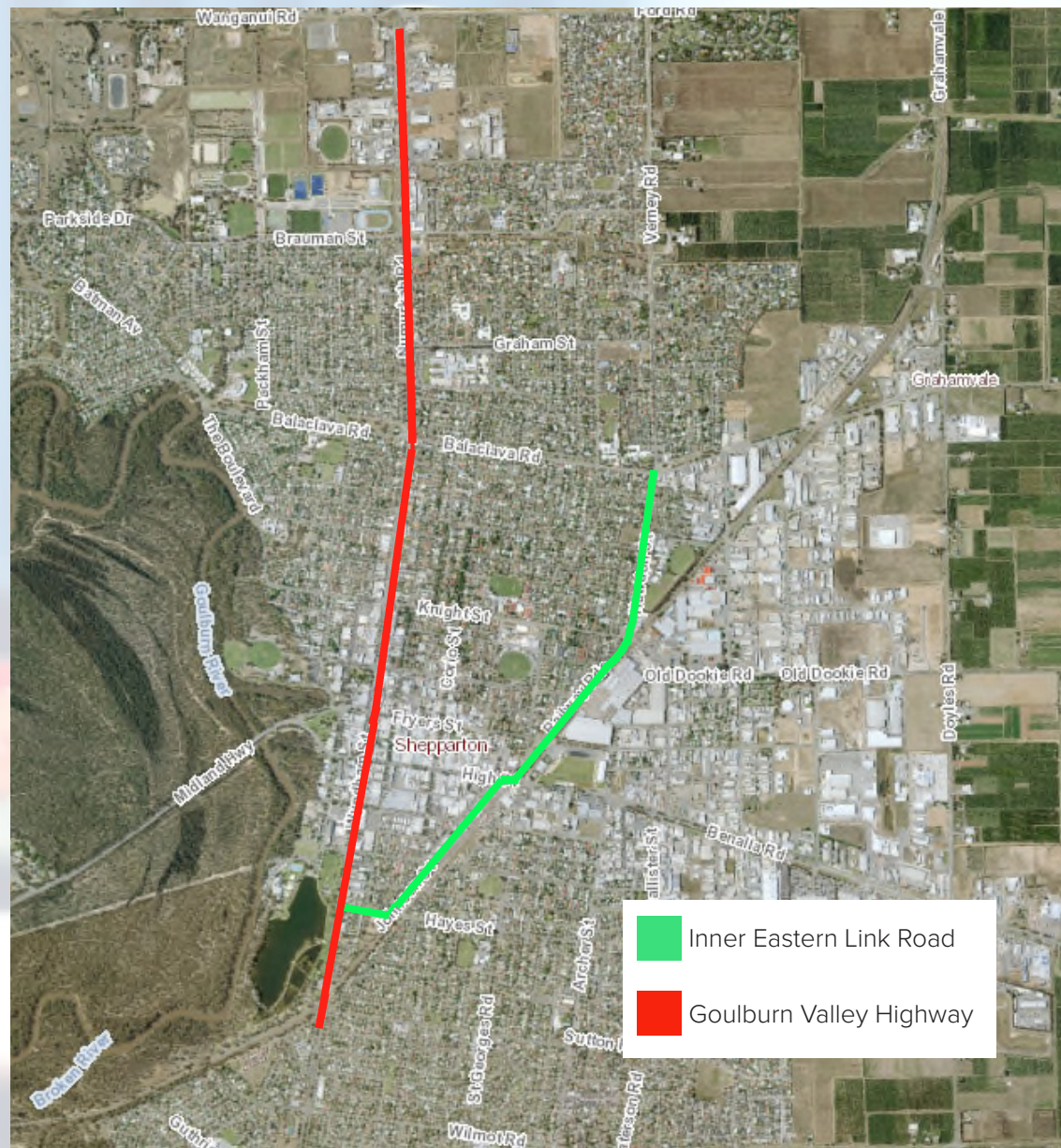
Overall context map



Intersection Map



Route Map



Intersection No.1 Hawkins Street / Numurkah Road (Goulburn Valley Highway)

Cost

Approximately \$2,520,000

Description

This project will provide a signal controlled intersection to improve the safety and operation of the intersection. The upgraded intersection will allow for safe movements of traffic to and from a regional level sports precinct, sub regional shopping precinct and residential developments. In addition to this, the upgraded intersection would provide safe pedestrian access across Goulburn Valley Highway between the sports precinct and the retail precinct. This intersection will be part funded by developer contributions.

Benefits

- Support State Government investment in the Munarra and Rumbalara Re-life projects and future Shepparton Sports and Events Centre;
- Provide an enhanced intersection that will allow safe and efficient movements of vehicles to in and out of a regional level sports precinct and sub-regional retail facilities;
- Reduces unsafe traffic environment caused by vehicles queueing along Goulburn Valley Highway;
- Reduces congestion and travel times ; and
- Provides a safe crossing point for pedestrian and reduces unsafe pedestrian access by foot.

What we are doing

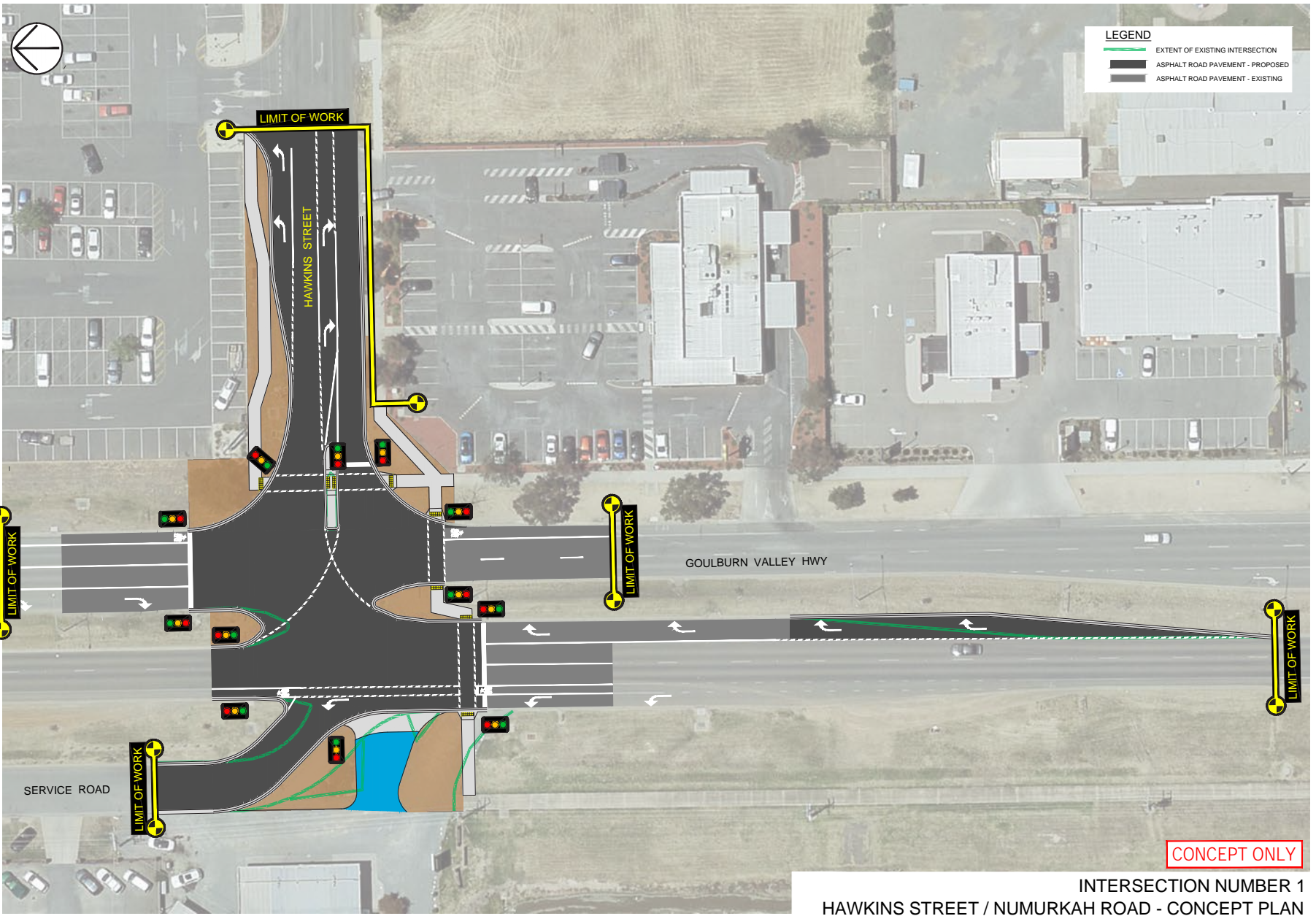
Upgrade the intersection of Hawkins Street and Goulburn Valley Highway to provide safe vehicular and pedestrian access to the retail precinct.

How are we doing it

- Installing traffic lights to improve traffic flow;
- Reducing unsafe traffic environments; and
- Providing safe pedestrian access.

When are we doing this

The final designs are currently being developed.



INTERSECTION NUMBER 1
 HAWKINS STREET / NUMURKAH ROAD - CONCEPT PLAN

Intersection No.2 Graham Street / Numukah Road (Goulburn Valley Highway)

Cost

Approximately \$1,795,000

Description

This project will provide a signal controlled intersection to provide safe access and egress to the Goulburn Valley Health, which is currently being extended. The signal controlled intersection will allow for safe east west movements into and out of the hospital to Goulburn Valley Highway. In addition to this, the upgraded intersection would elevate the existing safety concerns relating to cars queueing along Goulburn Valley Highway seeking to enter the hospital. Additionally the upgraded intersection would provide for appropriate pedestrian access across Goulburn Valley Highway.

Benefits

- Provide an enhanced intersection that will allow safe and efficient movements of vehicles to in and out of GV Health;
- Reduces unsafe traffic environment caused by vehicles queueing along Goulburn Valley Highway;
- Reduces congestion and travel times; and
- Provides a safe crossing point for pedestrian and reduces unsafe pedestrian access by foot.

What we are doing

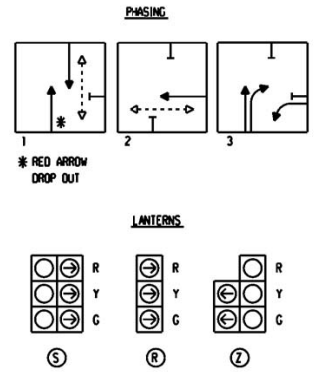
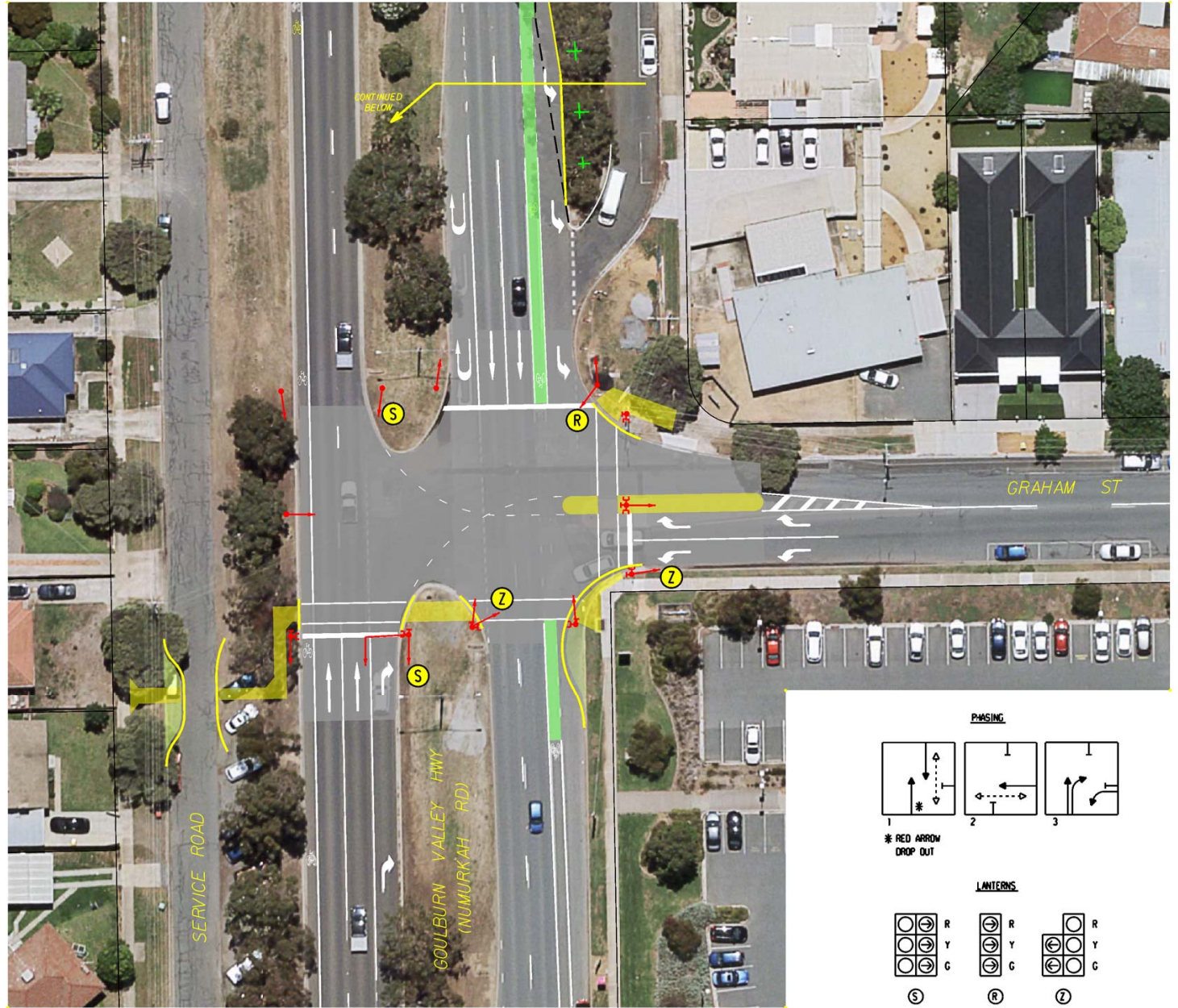
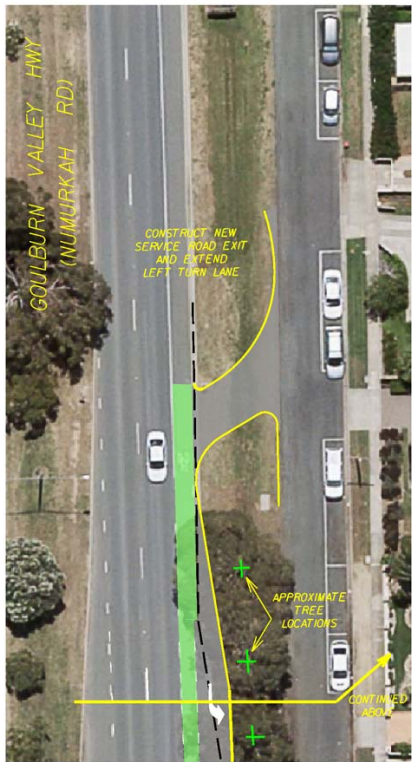
Upgrade the intersection of Graham Street and Goulburn Valley Highway to provide safe vehicular and pedestrian access to the Goulburn Valley Health.

How are we doing it

- Installing traffic lights to improve traffic flow;
- Reducing unsafe traffic environments; and
- Providing safe pedestrian access.

When are we doing this

Final designs for this intersection are currently being developed



Intersection No.3 Hayes Street / Wyndham Street intersection (Goulburn Valley Highway)

Cost

Approximately \$1,583,000

Description

This project will provide a signal controlled intersection to allow safe access to the Shepparton CBD Inner Eastern Link Road for cars and freight to move safely around the CBD. In addition the intersection will provide enhanced pedestrian links across the Goulburn Valley Highway to the Victoria Park Lake Precinct.

Benefits

- Provide a signal controlled intersection that will allow safe and efficient movements of vehicles to the Shepparton CBD Inner Eastern Link Road;
- Improves freight access to the Inner Eastern Link Road;
- Reduces congestion and travel times ; and
- Improves safety by reducing conflict between pedestrians and vehicular traffic.

What we are doing

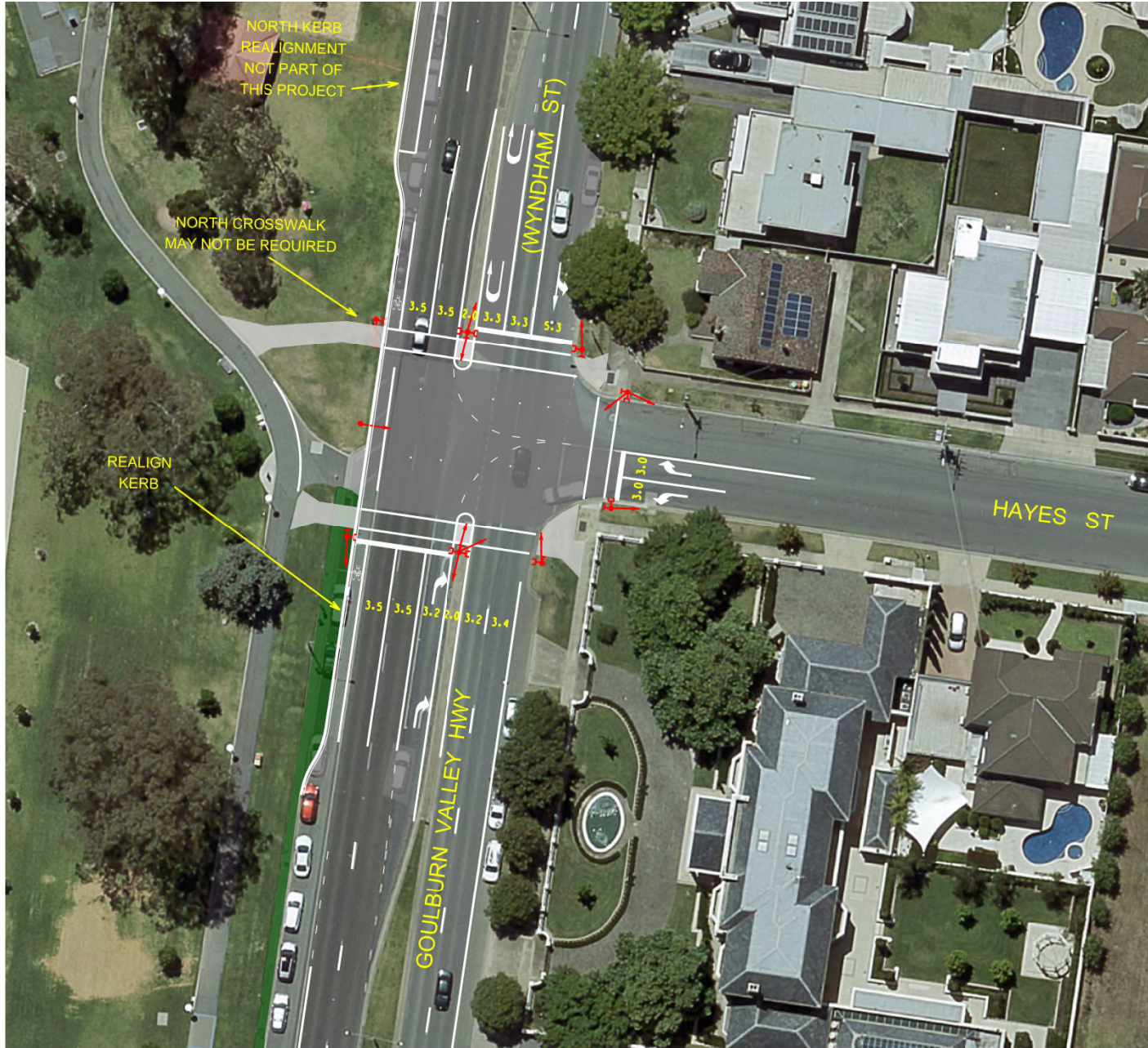
The project will provide safe and convenient access for freight and cars from the Goulburn Valley Highway to the Shepparton CBD Inner Eastern Link Road which will reduce congestion and travel times within Shepparton CBD. In addition the intersection will include pedestrian lights to reduce conflict between pedestrian and vehicular traffic.

How are we doing it

- Installing traffic lights to improve traffic flow;
- Improved freight access to the Shepparton CBD Inner Eastern Link Road; and
- Providing safe pedestrian access.

When are we doing this

Final designs for this intersection are current being developed.



Intersection No. 4 Fitzjohn Street / Wyndham Street (Goulburn Valley Highway)

Cost

Approximately \$4,676,000

Description

This project will provide access to the relocated Shepparton Art Museum and rationalise existing intersections to residential areas

Benefits

- Improves access into the Shepparton Art Museum to ensure safe traffic movements into a major tourist destination;
- Upgrades a number of adjacent intersections to improve access to residential areas;
- Improves access over an existing railway crossing; and
- Improves freight access to the Inner Eastern Link Road which will improve freight time lines by improving the flow of traffic by combating queueing by segregating traffic turning into SAM from through traffic.

What we are doing

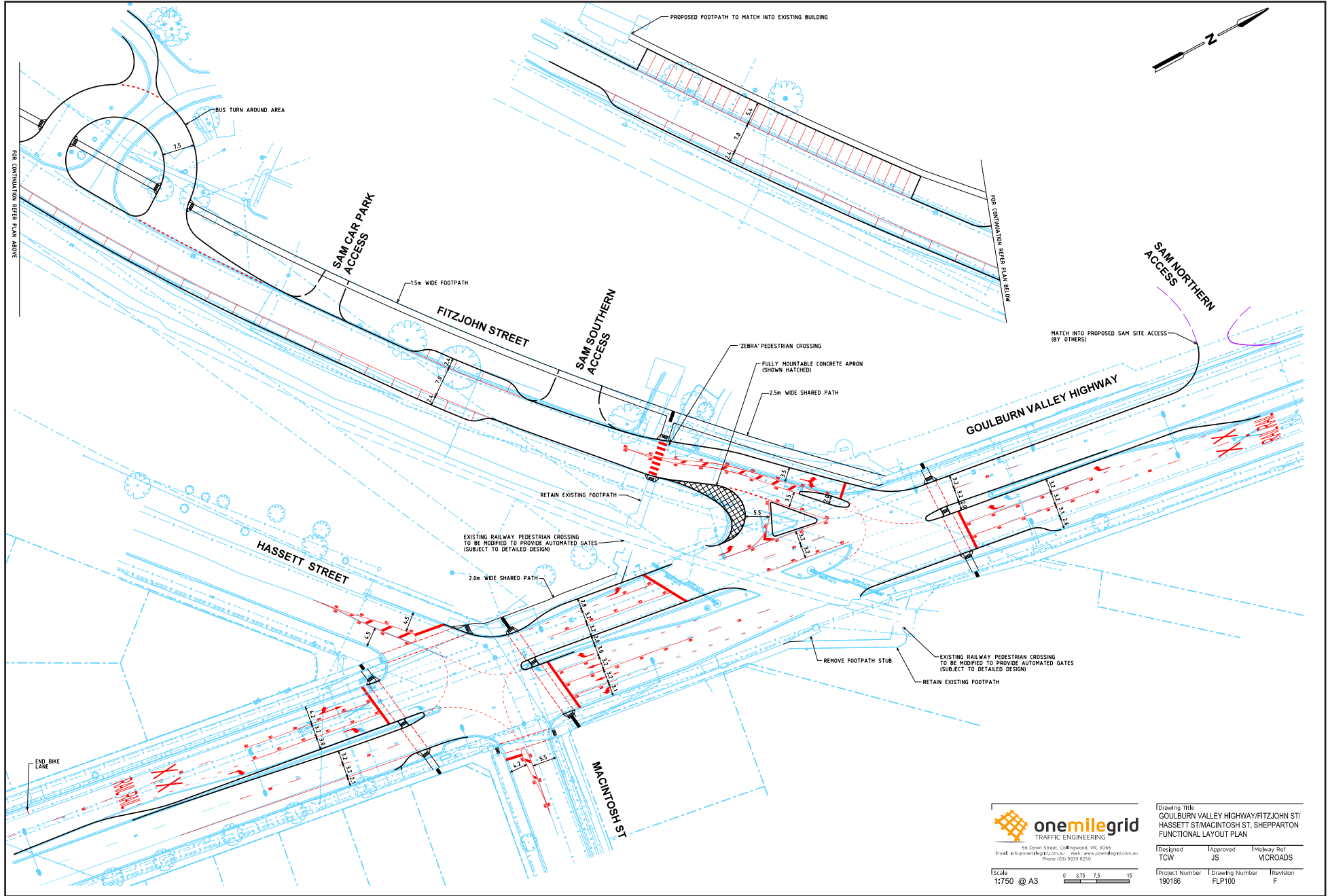
The project will provide safe and convenient access to the relocated Shepparton Art Museum and at the same time a number of existing intersections between Goulburn Valley Highway and residential areas to the east and west of the highway. The works will ensure safe movements throughout the area. In addition to this the surface around a railway crossing will be improved to improve freight access and efficiency.

How are we doing it

- Installing traffic lights to improve traffic safety and traffic flow;
- Improving an existing railway crossing to improve access for freight traffic;
- Providing safe pedestrian access; and

When are we doing this

Late 2019-early 2020



Drawing Title
 GOULBURN VALLEY HIGHWAY/FITZJOHN ST/
 HASSETT ST/MACINTOSH ST, SHEPPARTON
 FUNCTIONAL LAYOUT PLAN

Designed TOW	Approved JS	Highway Ref VICROADS
Project Number 190186	Drawing Number FLP100	Revision F

Scale
 1:750 @ A3

Intersection No.5 Hoskin Street / Midland Highway Intersection

Cost

Approximately \$3,095,000

Description

This project will provide an upgraded intersection between North Street and Midland Highway to enable the continuation of the Shepparton CBD Inner Eastern Link Road. This project will ensure that the intersection has appropriate dimensions to allow freight traffic to use this intersection.

Benefits

- Provide an enhanced intersection that will allow safe and efficient movements of vehicles to the Shepparton CBD Inner Eastern Link Road;
- Improves freight efficiency by allowing freight traffic to travel around Shepparton CBD;
- Supports the Shepparton Health and Education Hub;
- Reduces congestion and travel times.
- Enable the pedestrianisation of North Street enhancing safety between Latrobe University and GoTafe by removing through traffic.

What we are doing

Upgrade the intersection of Hoskin Street and High Street to improve traffic efficiency and road safety.

How are we doing it

- Installing traffic lights to improve traffic flow;
- Intersection widening to accommodate additional right turn traffic movements; and
- Providing safe pedestrian access.

When are we doing this

Final designs for this intersection are currently being developed.



Intersection No. 6 Fryers Street / Railway Parade Intersection

Cost

Approximately \$5,550,000

Description

This project will provide an upgraded intersection between Fryers Street and Railway Parade to enable the continuation of the Shepparton CBD Inner Eastern Link Road. This project will ensure that the intersection has appropriate dimensions to allow freight traffic to use this intersection.

Benefits

- Provide an enhanced intersection that will allow safe and efficient movements of vehicles to the Shepparton CBD Inner Eastern Link Road;
- Improves freight efficiency by allowing freight traffic to travel around Shepparton CBD; and
- Reduces congestion and travel times.
- Improve access for pedestrians and vehicles to the Greater Shepparton College (interim name)

What we are doing

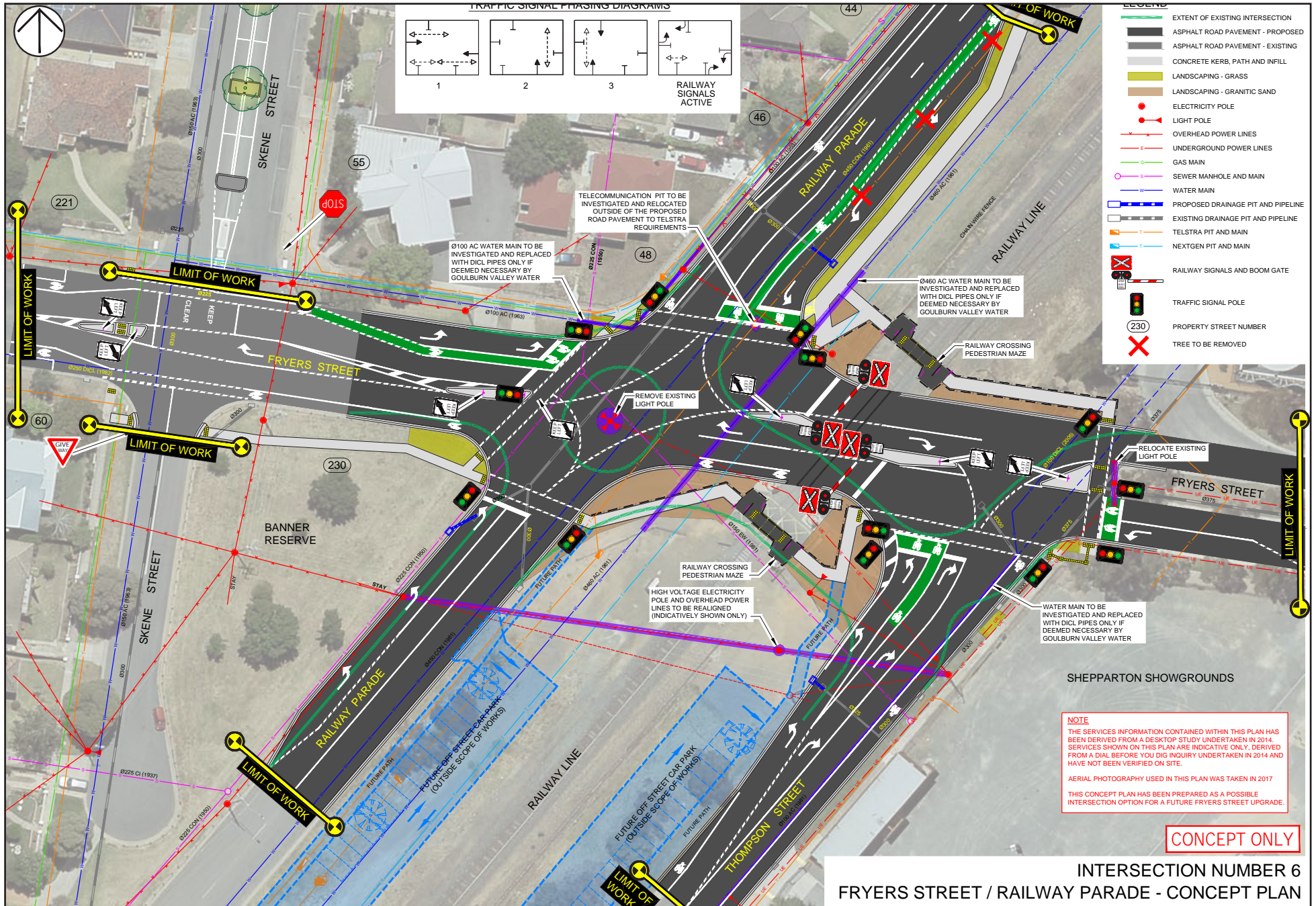
Upgrade the intersection of Fryers Street and High Street to improve traffic efficiency and road safety.

How are we doing it

- Installing traffic lights to improve traffic flow;
- Intersection widening to accommodate additional right turn traffic movements; and
- Providing safe pedestrian access.

When are we doing this

Final designs for this intersection are currently being developed



Intersection No.7 Knight Street / Railway Parade Intersection

Cost

Approximately \$3,004,000

Description

This project will provide a number of benefits, including an upgraded intersection between Knight Street and Railway Parade to enable the continuation of the Shepparton CBD Inner Eastern Link Road. This project will ensure that the intersection has appropriate dimensions to allow freight traffic to use this intersection. Additionally the projects will also future proof the intersection to allow enhanced access for school buses to Greater Shepparton College (Interim name)

Benefits

- Provides enhanced access for school buses, pedestrian and cyclists to the Greater Shepparton College (Interim name)
- Improves freight efficiency by allowing freight traffic to travel around Shepparton CBD;
- Reduces congestion and travel times ; and
- Provides enhanced access for school buses, pedestrian and cyclists to the Greater Shepparton College (Interim name).

What we are doing

Upgrade the intersection of Fryers Street and High Street to improve traffic efficiency and road safety for freight, school busses, pedestrians and cyclists.

How are we doing it

- Installing traffic lights to improve traffic flow;
- Intersection widening to accommodate freight and bus movements; and
- Providing safe pedestrian access.

When are we doing this

The concept plans for this intersection are currently being developed.



Intersection No. 8 Hayes / Johnson Street Intersection

Cost

Approximately \$2,470,000

Description

This project will provide a member of benefits, including an upgraded intersection between Hayes Street and Johnson Street to enable the continuation of the Shepparton CBD Inner Eastern Link Road (Interim name). This project will ensure that the intersection has appropriate dimensions to allow freight traffic to use to safely access the Shepparton CBD Inner Eastern Link Road (interim name).

Benefits

- Provide an enhanced intersection that will allow safe and efficient movements of vehicles to the Shepparton CBD Inner Eastern Link Road (interim name);
- Improves freight efficiency by allowing freight traffic to travel around Shepparton CBD;
- Reduces congestion and travel times ; and
- Provides enhanced access for school buses, pedestrian and cyclists to the Greater Shepparton College (Interim name).

What we are doing

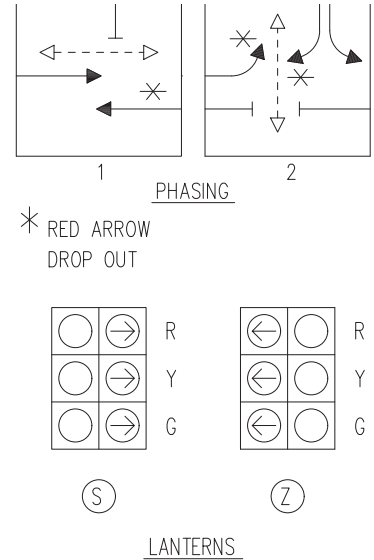
Upgrade the intersection of Hayes Street and Johnson Street to improve traffic efficiency and road safety for vehicular traffic including freight, pedestrians and cyclists.

How are we doing it

- Installing traffic lights to improve traffic flow;
- Intersection widening to accommodate car and freight traffic; and
- Providing safe pedestrian and cyclist access.

When are we doing this

The concept plans for this intersection are currently being developed.



CONCEPT ONLY

INTERSECTION 8
 HAYES STREET / JOHNSON STREET
 CONCEPT PLAN

Intersection No.9 Fryers Street / Welsford Street Intersection

Cost

Approximately \$1,834,000

Description

This project will provide a number of benefits, including an upgraded intersection between Fryers Street and Welsford Street to enable the upgrade of the Midland Highway and Welsford Street intersection to ensure traffic flows are catered for in a safe manner including ensuring B –Double movements from the east to access an alternate route to using the CBD, thus ensuring a safer traffic environment in the CBD. This project will ensure that the intersection has appropriate dimensions to allow freight traffic to use this intersection.

Benefits

- Provide an enhanced intersection that will allow safe and efficient movements of vehicles to from Midland Highway to the Shepparton CBD and B-Double for vehicles from the east access to an alternate route around Shepparton CBD;
- Improves freight efficiency by allowing freight traffic to travel around Shepparton CBD;
- Reduces congestion and travel times ; and

What we are doing

Upgrade the intersection of Fryers Street and Welsford Street to improve traffic efficiency and road safety for freight, cars, pedestrians and cyclists.

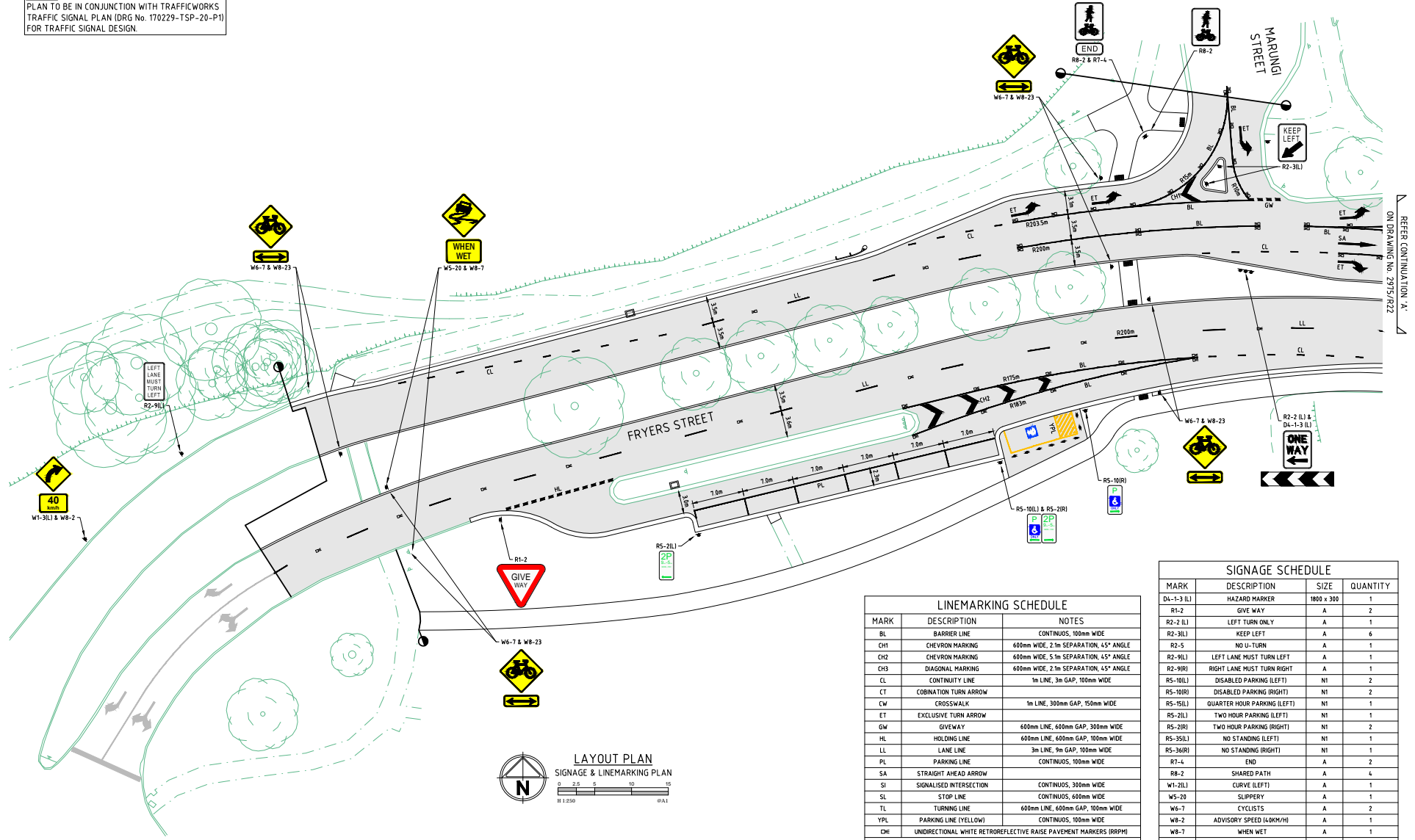
How are we doing it

- Duplicating the road to improve traffic flow and reduce congestion
- Intersection modifications to accommodate freight and bus movements; and
- Providing safe pedestrian access.

When are we doing this

Final designs for this intersection are currently being developed.

NOTE!
 PLAN TO BE IN CONJUNCTION WITH TRAFFICWORKS,
 TRAFFIC SIGNAL PLAN (DRG No. 170229-TSP-20-P1)
 FOR TRAFFIC SIGNAL DESIGN.



LINEMARKING SCHEDULE		
MARK	DESCRIPTION	NOTES
BL	BARRIER LINE	CONTINUOUS, 100mm WIDE
CH1	CHEVRON MARKING	600mm WIDE, 2.1m SEPARATION, 45° ANGLE
CH2	CHEVRON MARKING	600mm WIDE, 5.1m SEPARATION, 45° ANGLE
CH3	DIAGONAL MARKING	600mm WIDE, 2.1m SEPARATION, 45° ANGLE
CL	CONTINUITY LINE	1m LINE, 3m GAP, 100mm WIDE
CT	COBINATION TURN ARROW	
CW	CROSSWALK	1m LINE, 300mm GAP, 150mm WIDE
ET	EXCLUSIVE TURN ARROW	
GW	GIVEWAY	600mm LINE, 600mm GAP, 300mm WIDE
HL	HOLDING LINE	600mm LINE, 600mm GAP, 100mm WIDE
LL	LANE LINE	3m LINE, 9m GAP, 100mm WIDE
PL	PARKING LINE	CONTINUOUS, 100mm WIDE
SA	STRAIGHT AHEAD ARROW	
SI	SIGNALISED INTERSECTION	CONTINUOUS, 300mm WIDE
SL	STOP LINE	CONTINUOUS, 600mm WIDE
TL	TURNING LINE	600mm LINE, 600mm GAP, 100mm WIDE
YPL	PARKING LINE (YELLOW)	CONTINUOUS, 100mm WIDE
CH	UNIDIRECTIONAL WHITE RETROREFLECTIVE RAISE PAVEMENT MARKERS (RRPM)	
ALL LINEMARKING IN ACCORDANCE WITH AS 1742.		

SIGNAGE SCHEDULE			
MARK	DESCRIPTION	SIZE	QUANTITY
D4-1-3 ILI	HAZARD MARKER	1800 x 300	1
R1-2	GIVE WAY	A	2
R2-2 LL	LEFT TURN ONLY	A	1
R2-3(L)	KEEP LEFT	A	6
R2-5	NO U-TURN	A	1
R2-9(L)	LEFT LANE MUST TURN LEFT	A	1
R2-9(R)	RIGHT LANE MUST TURN RIGHT	A	1
R5-10(L)	DISABLED PARKING (LEFT)	N1	2
R5-10(R)	DISABLED PARKING (RIGHT)	N1	2
R5-15(L)	QUARTER HOUR PARKING (LEFT)	N1	1
R5-15(R)	QUARTER HOUR PARKING (RIGHT)	N1	1
R5-21(L)	TWO HOUR PARKING (LEFT)	N1	1
R5-21(R)	TWO HOUR PARKING (RIGHT)	N1	2
R5-35(L)	NO STANDING (LEFT)	N1	1
R5-35(R)	NO STANDING (RIGHT)	N1	1
R7-4	END	A	2
R8-2	SHARED PATH	A	4
W1-21(L)	CURVE (LEFT)	A	1
W5-20	SLIPPERY	A	1
W6-7	CYCLISTS	A	2
W8-2	ADVISORY SPEED (40KM/H)	A	1
W8-7	WHEN WET	A	1
W8-23	CROSSING	A	2

REFER CONTINUATION 'A'
 ON DRAWING No. 2975/RZ2

LAYOUT PLAN
 SIGNAGE & LINEMARKING PLAN
 0 2.5 5 10 15
 1:250

CONTACT US

Business hours: 8.15am to 5pm weekdays

In person: 90 Welsford Street, Shepparton

Mail: Locked Bag 1000, Shepparton, VIC, 3632

Phone: (03) 5832 9700 | **SMS:** 0427 767 846 | **Fax:** (03) 5831 1987

Email: council@shepparton.vic.gov.au

Web: www.greatershepparton.com.au

Join the conversation:

