



GREATER  
SHEPPARTON

Greater Shepparton's  
**Heritage  
Open Days**  
2023

**FRIDAY 12 MAY AND  
SATURDAY 13 MAY**

Visit your heritage **free**



# Welcome to the Greater Shepparton Heritage Open Days 2023

These free days have been organised by the Greater Shepparton Heritage Advisory Committee in conjunction with Council.

The Heritage Open Days 2023 follow on from the first two very successful Heritage Open Days, in 2017 and 2019, inspired by 'Open House Melbourne' when hundreds of buildings (not only heritage places) are open.

During Greater Shepparton's Heritage Open Days 2023 you can visit, FREE, around 40 places of heritage and historical significance in Greater Shepparton.

Some have never been opened to the public before, and many are rarely on view.

Other familiar places will come alive as you visit and hear their stories.

Included are all the Museums and collections run by the historical societies: normally an entrance fee is charged.

Greater Shepparton has an interesting history. Aboriginal peoples inhabited the area for thousands of generations. Europeans arrived in the mid nineteenth century, and developed a thriving agricultural economy, centred on the city of Shepparton, with many service towns. Subsequent settlement has gone on to welcome people from many corners of the world.

This has resulted in a wealth of heritage places, a diverse and unique range of both buildings and sites.

The Heritage Open Days will showcase many of these.

There are three ways to visit our heritage places:

- Many venues are opening their doors for visitors to attend independently
- Bus tours
- Walking tours

Printing of these booklets has been kindly subsidised by local printers Prominent Group.

Provision of buses for the tours has been subsidised by the Dyson Group.

The Ethnic Council of Shepparton and District has subsidized bus tours to the mosques and temple in our municipality.

A big thank you to both companies and to the Ethnic Council.

You may have to make hard decisions! Getting from one place to another takes time in an extensive municipality such as ours. With careful planning you should be able to do a number of different things over the two days. The Committee has tried to stagger tour and venue times, while fitting in with what the generous venue owners and proprietors are able to offer.

Remember: suitable footwear, water, sun protection. And watch your step at all times.

Please treat these properties with respect, mindful of how generous-spirited the owners and proprietors have been in opening on these days.

**How to book for all venues/activities which require bookings.**



Bookings  
can be made on  
**5832 9730**

# BUS TOURS

## ALL BUS TOURS REQUIRE BOOKINGS.

Bus tours will depart at the listed time from outside the Shepparton Library at 41-43 Marungi Street, Shepparton. There is car parking available in this area.

Departure times may have to be slightly staggered: there may a few minutes' wait.

## GATEWAY TO THE GV TOUR

NOTE VARIATION OF DATE: THESE TOURS TAKE PLACE ON SATURDAY 13 AND SUNDAY 14 MAY.

Tours Sat and Sun. Depart 10am, return approx 4pm.

Bookings required

Time is allowed for lunch in Murchison, or bring your own. The Murchison Heritage Centre and Christ Church will be open.

### Former Moorilim Catholic Church, Moorilim

A privileged visit to an archetypal red brick country church cleverly converted into a comfortable private dwelling. The church once served the staunchly Catholic population of the vanished village. Complemented by a picturesque garden.

---



### Day's Mill

'The finest example of traditional milling technology in working order in its original setting' in Victoria, and probably Australia. The three-storey brick mill of 1865 and later granary extension, the flanking two-storey brick residence, the evocative collection of farm buildings, and the peppercorn- and pine tree-lined drive from the gatehouse comprise an unforgettable heritage site.

Listed on the Victorian Heritage Register.

---



## IRRIGATION TOUR

Tour departs Fri 9.30am, returns approx 4pm.

**Bookings required.**

Time is allowed for lunch in Murchison, or bring your own. The Murchison Heritage Centre and Christ Church will be open.

Tour includes rough terrain: wear closed, suitable footwear.

---

### **Goulburn Weir (1891)**

Just outside Greater Shepparton, but vital. The first major diversion structure built for irrigation in Australia and seen as a ground-breaking 'national' scheme, it raises the river level so that water can be diverted to irrigation in the GV.



### **1890 Flume**

Only the handrail of this impressive wooden structure, Flume No 4, is visible. It was constructed to carry the new National Channel across a natural drainage depression south of Murchison en route from the Weir to the Waranga Basin storage.



### **'Old pump site', Murchison**

The 1885 pump was the solution of the local water authority, the United Echuca and Waranga Waterworks Trust, to the pent-up local demand for irrigation to fill its channels while a weir was still being debated. Archaeological site only.



### **'Big Cut'**

A rarely-seen section of the Cattanach Canal (1957) cut through a rise just before the Canal enters the Waranga Basin. Here the depth of cut is the greatest on the Canal, up to 19m, resulting in impressive low cliff-like walls.



## **DOOKIE AND NEARBY TOUR**

Tour departs Sat 10am, returns approx 4pm.

Bookings required.

Time is allowed for lunch in Dookie, or bring your own.

### **Gowangardie Homestead**

A rare opportunity to see one of the municipality's few squatter-built homesteads, the evocative first stage erected by Humphrey Grattan in the early 1860s. The wonderful stable/coach house is suffering the ravages of time and its vernacular construction.

---



### **St Mary's Catholic Church, Dookie**

Very popular for weddings due to its picturesque rural setting outside Dookie, on land donated by vineyard owner John Curtain, this impressive cruciform (cross-shaped) 1898 church is a prominent local landmark. The presbytery is the municipality's only Catholic monastery.

---



### **Dookie Public Cemetery**

Be guided around this historic cemetery situated on the western slopes of Mt Major, with panoramic views providing a striking backdrop to the graves. With burials dating from the 1870s, it is one of two cemeteries in the Dookie area, the other being Cashel or Dookie East.

---



## ABORIGINAL HISTORY AND HERITAGE TOUR

Tour departs Fri 9.30am, returns approx 12.30pm.

Bookings required.

### Rumbalara Aboriginal Co-operative

The tour begins with an Elders' Welcome to Country and Smoking Ceremony and a presentation on early local Aboriginal history leading to settlement at Rumbalara in 1958, when the Aboriginal Welfare Board and the Housing Commission erected ten prefabricated houses built entirely of concrete; we visit one of the two remaining homes.

---



### The Flats

The small Aboriginal settlement at The Flats in Mooroopna grew following the Walk Off in 1939 from Cummeragunja, the settlement near Barmah, where conditions had become abysmal. For the residents of The Flats in their houses of corrugated iron, plastic, and hessian, Kaiela (the Goulburn River) provided much of the food supply.

---



### Mooroopna War Memorial

The remodelled Mooroopna War Memorial commemorates service personnel from WW1 through to the Indonesian conflicts. The display of wartime photographs includes images of local Aboriginal soldiers who, although not recognised as citizens, enlisted and for the first time were treated as equals by their fellow diggers.

---



## TALLY TOUR

Tour departs Sat 12.30pm, returns approx 4pm.

Bookings required.

### Fairley Downs

See the slab hut of early squatter Sherbourne Sheppard (after whom Shepparton is named), a small private graveyard, and wander around the exterior of Hamilton Coldwell's 1906 homestead, designed by well-known local architect, John Augustus Kenny Clarke.



### Tallygaroopna Soldiers' Memorial Hall

This proud little Memorial hall, topped by its trophy WW1 German trench mortar, was opened by Acting Prime Minister Dr Earle Page on 9 June 1924. At £2500, it cost the small community £1000 more than Shepparton's famous statue. See the RSL 'dugout'.



## MOSQUES AND TEMPLE TOUR

On this full day tour, subsidised by the Ethnic Council of Shepparton and District, you will visit the area's four mosques and the Sikh temple. Lunch will be provided. Headcovering is required for women, and for men at the Temple. This tour, conducted irregularly by the Ethnic Council, is very popular, so book early.

**NOTE VARIATION OF DATE: THIS TOUR TAKES PLACE ON THURSDAY 11 MAY AND SATURDAY 13 MAY.**

Tour departs Thurs, Sat 10am, returns approx 4pm.

Bookings required: booking for this tour is through the Ethnic Council of Shepparton and District at 5831 2395.

### Albanian Mosque

This was the first mosque built in Shepparton, Albanians having been established in this area since the 1920s. The first stone was laid in 1956 by Myrteza Adem and R Sherif Islam, with the building opening in 1960.





## Afghani Mosque

The local Afghani population, who mainly arrived in this area from 2005 when many of the men came to pick fruit, raised in excess of \$1 million for this mosque and engaged a builder to develop the project, which commenced in mid-2013.



## Sikh Temple

Sikhs started settling in the Goulburn Valley in the 1970s, attracted by the availability of work on the orchards. The impressive temple or gurdwara was opened in 1980; the worship place is on the first level, with a community service hall on the ground floor.



**Please note that locations visited on the Mosques and Temple tour will vary dependent on availability.**

**Please confirm which locations will be available for visiting when booking with the Ethnic Council.**

# WALKING TOURS

## **Shepparton: Beginnings and more**


Wander through the city's CBD along streets drawn up by JGW Wilmot in his 1855 Crown Survey of the township of Shepparton. Relive Shepparton retail from its earliest period to current times, and hear some of the stories the buildings can tell.

Departs Queens Gardens.

Fri 10am with Eileen

Sat 10am with Anna

1½ hours

 (with your assistant)

---


## **Mooroopna: History and heritage**

See a wide range of heritage sites and buildings important in Mooroopna's development with history enthusiast Andrew Morcom. The walk focuses on the eastern end of the town, including historic aspects of the Goulburn River in the town's life.

Mooroopna War Memorial car park.

Sat 10am

1½ hours

 (with your assistant)

---


## **Tatura: A Town with a Reason!**

Stroll the main streets of Tatura with long-time local resident George Ferguson of the Tatura Museum hearing about the town's history and development. George promises an intrigue!

Meet at the Tatura Museum on Hogan St.

Fri 10am

1½ hours

 (with your assistant)

---


## **Murchison: Stepping back in time**

Learn how Murchison developed while walking around the central part of town, passing many historic sites and buildings. Hear the story of notable events in Murchison's history from local guide. Complete the walk at the Heritage Centre and enjoy morning tea.

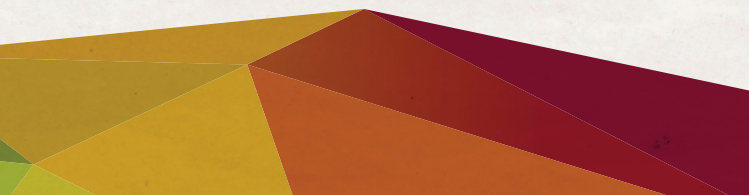
Meet at Heritage Centre, Stevenson St.

Sat 10am

1 hour

 (with your assistant)

---



# INDEPENDENT VISITING

Bookings are needed for some of these venues.

## Day's Mill

'The finest example of traditional milling technology in working order in its original setting' in Victoria, and probably Australia. The three storey brick mill of 1865 and later granary extension, the flanking two-storey brick residence, the evocative collection of farm buildings, and the peppercorn- and pine tree-lined drive from the gatehouse comprise an unforgettable heritage site.



Listed on the Victorian Heritage Register

**Days Road, Murchison South.**

**Open: Sat, Sun 10am – 4pm**

**Tour: Sun at 11am**

 (no paved areas)

---

## Shepparton Heritage Centre (Foresters' Hall)

Shepparton's oldest building, constructed as the first public hall by William Fraser in 1873. Used for many different purposes, e.g. Foresters' Lodge (1933). Many absorbing exhibits: see the Post Office clock! Various publications for sale.



**154 Welsford St, Shepparton.**

**Open: Fri, Sat 10am – 4pm**



## Bangerang Cultural Centre, Shepparton

Designed by prominent Australian architect Frederick Romberg and opened in 1982 as part of the International Village, the Centre houses an important collection of Indigenous cultural items from the local area and beyond.



Listed on the Victorian Heritage Register

**Parkside Drive, Shepparton.**

**Open: Sat 10am – 3pm**



## **The Big Hymn Sing at the former Wesley Church**

Both tangible and intangible heritage! The 1908 'amphitheatre-style' church, with accomplished local musician Graeme Brewer at the historic 1951 Fincham pipe organ, will host a grand session of hymn-singing, now a declining tradition.



**All welcome!**

**134 Maude St, Shepparton.**

**Open: Sat 2pm**



## **St Augustine's Anglican Church, Shepparton**

Louis Williams, a renowned church architect, designed this 1926 church with his particular twentieth century adaptation of Gothic and his usual emphasis on quality and craftsmanship. Note the beautiful features of the interior.



**95 Maude St, Shepparton.**

**Open: Fri 10am – 2pm**



## **Brown's Plaster Works, Shepparton**

**LAST CHANCE! OPENING ESPECIALLY FOR HOD 2023.**

The Shepparton Fibro Plaster Works were established in 1926 as Brown and Anderson. See where the linings of many Shepparton homes originated and hear about the process. A heritage business!



Good walking shoes required.

**2-16 Mason Street, Shepparton.**

**Open: Fri 1pm – 3pm**

**Talk: 1pm**



## **Shepparton Cemetery**

Learn about this fascinating and picturesque cemetery, dating from 1874, with expert Jeanette Doherty, author of the recent history of the cemetery. The range of burial options reflects our multicultural society.



**5 Rudd Rd, Shepparton.**

**Tour: Sat 11am**

**Some rough terrain.  (with your assistant)**

## **Australia Hotel, Shepparton**

From Coghlan's Hotel in the early 1880s to Union Hotel to the Hotel Australia in 1929: most of this building dates from the rebuilding in 1898. Join a previous owner for a tour through the hotel, including the former family area and the cellar.



**73 Fryers St, Shepparton.**

**Tour: Sat 10.30am**

**Bookings required.**

---

## **Philippine House Museum and Library, Shepparton**

The Philippine House, portraying a typical (if idealised) Philippine home, was constructed in 1988 as part of the International Village. Restored in 2015, it houses Philippine history and artefacts, and hosts community activities.



**Parkside Drive, Shepparton.**

**Open: Sat 11am – 3pm**



## **St Brendan's Catholic Church, Shepparton**

Designed by renowned local architect JAK Clarke in 1900, St Brendan's was renovated and enlarged to the design of high profile and prolific Catholic architect AA Fritsch in 1923-24, with later alterations and additions.



**121 Knight St, Shepparton.**

**Open: Sat 12 noon – 1pm**



## **St Mel's (Christ The King Catholic Church)**

Shepparton's second Catholic parish erected this distinctive futuristic church, by Trieste-born architect Ermin Smrekar, in 1970. It catered to the influx of Italian migrants as Shepparton expanded. The spaciousness of the interior is striking.



**18 Hamilton St, Shepparton.**

**Open: Sat 10.30am – 12.30pm**

**Tour: 10.30am**



## Shepparton Family History Group

Wondered about your family's history? Curious about that family rumour? Come and see how the SFHG and its wide range of resources can help you with genealogical research, and how some of the unknowns in your family's past might become clear. You may even have information to contribute on your ancestors!



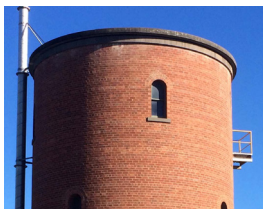
Corner of High and Welsford Streets, Shepparton.

Open: Fri, Sat 10am-4pm



## Brick Water Tower, Shepparton

The 1889 brick tower, no longer needed and minus its tall wrought iron tank, is an iconic local landmark being preserved by GV Water for its regionally significant heritage value.



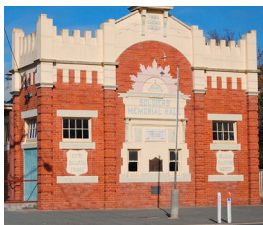
172 Welsford St, Shepparton.

Open: Fri 10am – 2pm



## Soldiers' Memorial Hall, Tallygaroopna

This proud little 1924 Memorial hall, topped by its trophy WW1 German trench mortar, retains many interesting artefacts. At £2500, it cost the small community £1000 more than Shepparton's famous statue. See the RSL 'dugout'.



Cnr Victoria & Fowler St, Tallygaroopna.

Open: Sat 12 noon – 4pm



## **St Mary's Catholic Church, Dookie**

Very popular for weddings due to its picturesque rural setting outside Dookie, on land donated by vineyard owner John Curtain, this impressive cruciform

(cross-shaped) 1898 church is a prominent local landmark. The presbytery is the municipality's only Catholic monastery.



**93 Saddleback Rd, Dookie.**

**Open: Sat 1pm – 3pm**



## **Dookie Public Cemetery**

Situated on the western slopes of Mt Major, with panoramic views providing a striking backdrop to the graves. It is one of two cemeteries in the Dookie area, with burials dating from the 1870's.



**305 Dookie-Gowangardie Rd, Mount Major.**

**Guide available Sat 2pm – 4pm**



## **Mooroopna Historical Society Museum and Gallery**

A huge and varied collection relating to Mooroopna's history is attractively displayed throughout the former Grutzner House. The sometimes gruesome medical collection, the largest in country Victoria, relates particularly to the Mooroopna Hospital.



**30 Park St, Mooroopna.**

**Open: Fri 12 noon – 3pm**



## **Mooroopna Cemetery**

This fine cemetery, with its stately avenue of cotton palms, includes 19th century graves of ethnic Chinese and the unmarked graves of 937 persons of many nationalities who died between 1881 and 1944 in the Mooroopna Base Hospital.



**440 Echuca Rd, Mooroopna.**

**Guide available Sat 10am – 12noon**



## Murchison Heritage Centre

The award-winning Heritage Centre collects and preserves Murchison's history. Informative displays cover the Aboriginal Protectorate, Day's Mill, Camp 13 and much more. See sporting memorabilia, and part of the famous Murchison meteorite!



**4 Stevenson St, Murchison.**

**Open: Fri 10am – 12 noon, Sat 10am – 4pm**



## Christ Church, Murchison (Anglican)

This charming red brick Gothic country church of 1884 contains high quality memorial windows by two well-known Melbourne firms of glass manufacturers, Brooks Robinson and W Montgomery.



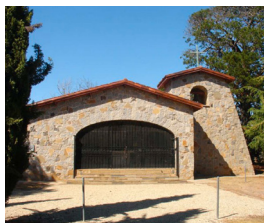
**15 Impey St, Murchison.**

**Open: Fri, Sat 12 noon – 2 pm**



## Murchison Cemetery and Ossario

This picturesque early cemetery (1860) contains the graves of three local Ngooraialim Aborigines. The distinctive Italian Ossario houses the remains of 130 Italian POWs and internees who died on Australian soil, many in the local camps.



The Ossario was added to the Victorian Heritage Register in 2020.

**21 Old Weir Rd, Murchison.**

**Talk and tour: Sat 10am, 11am, 1pm**

 (no made paths)



## **Wartime POW and Internment Camps video**

### **NEW RELEASE!**

View the new video detailing the history and heritage of the group of local World War Two POW and Internment camps.

Learn the fascinating story of the seven camps clustered near Tatura, Rushworth and Graytown with Kay Ball of the Murchison Heritage Centre.

Evocative and little-seen images bring this strange chapter in GV history to life.

### **Murchison Heritage Centre, 4 Stevenson St, Murchison.**

View video Fri 12 noon and 1pm, Sat 12 noon.

### **Tatura Museum, 49 Hogan St, Tatura.**

View video Fri 2pm, Sat 3pm.

### **Shepparton Heritage Centre, 154 Welsford St, Shepparton.**

View video Fri, Sat 11am to 3pm on the hour.

---

### **Merrigum Museum, formerly Judd's General Store**

One of the most extensive collections in the municipality; includes agricultural machinery and household items. The Judd family conducted their general store here for 66 years. A rare original early 20th century shop front.

111-113 Waverley Avenue, Merrigum.

Open: Fri 12 noon – 3pm



### **Tatura Wartime Camps And Irrigation Museum**

The fascinating WW2 internment and POW camps collection is of State heritage significance. Irrigation is the other focus: from the original four-roomed building (c.1888) the irrigation scheme for the western Goulburn Valley was developed.

The Camps Collection is listed on the Victorian Heritage Register.

49 Hogan St, Tatura.

Open: Fri 1pm – 3pm, Sat 2pm – 4pm





**Victory Hall (1925) and  
Mechanics' Institute (1880,  
1893), Tatura**

Explore the twin halls, reinvigorated and restored by concerted local effort, which now enrich the Tatura streetscape and again provide a social and cultural focal point. Hear about their history from those who saved them.

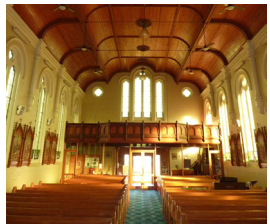


77 Hogan St, Tatura.  
Open: Fri 10am – 12 noon



**Sacred Heart Catholic Church  
And St Mary's Hall, Tatura**

The imposing group of church, convent, and the former St Mary's school, on a prominent site in the town, reflects Tatura's strong Catholic allegiances. The detailed Romanesque (round-arched) exterior is complemented by the beautiful interior.



67 Hogan St, Tatura.  
Open: Fri 11am – 1pm



**St Andrew's Church, Tatura**

Prolific ecclesiastical architect Alec Eggleston designed this substantial church for Tatura's Presbyterians in 1912, Rodney Shire engineer A Knee (snr) locally supervising some of the construction details. The earlier 1883 church stands alongside.



241 Hogan St, Tatura.  
Open: Fri 11am – 1pm





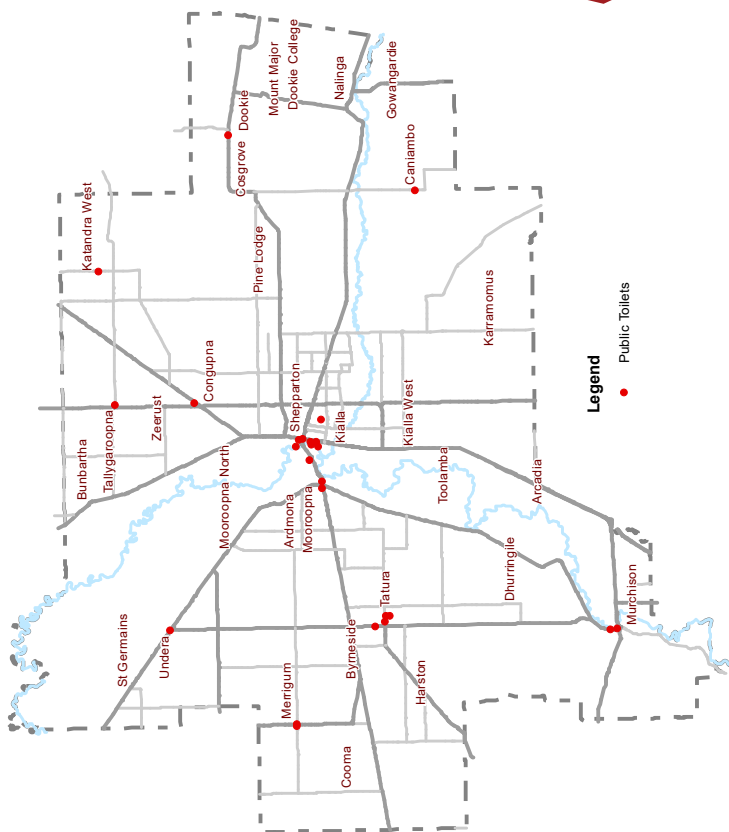
**PROMINENT**GROUP



The Council of the City of Greater Shepparton and the Heritage Advisory Committee would like to express their gratitude to the two very generous sponsors of the Heritage Open Days:

- the Dyson Group for providing all buses, and
- the Prominent Group for printing the booklets;

and also to the Ethnic Council of Shepparton for providing the Mosques and Temple Tour.



The Greater Shepparton Heritage Open Days have been made possible due to the generous-spirited support of our venue owners and proprietors, our two sponsors, the Ethnic Council and the volunteers. Greater Shepparton City Council and the Heritage Advisory Committee wish to express their gratitude to the owners and proprietors who are willing to open their properties for this event, and to those who will staff venues during the Days: your response has been outstanding.

For further information please visit  
[www.greatershepparton.com.au](http://www.greatershepparton.com.au)