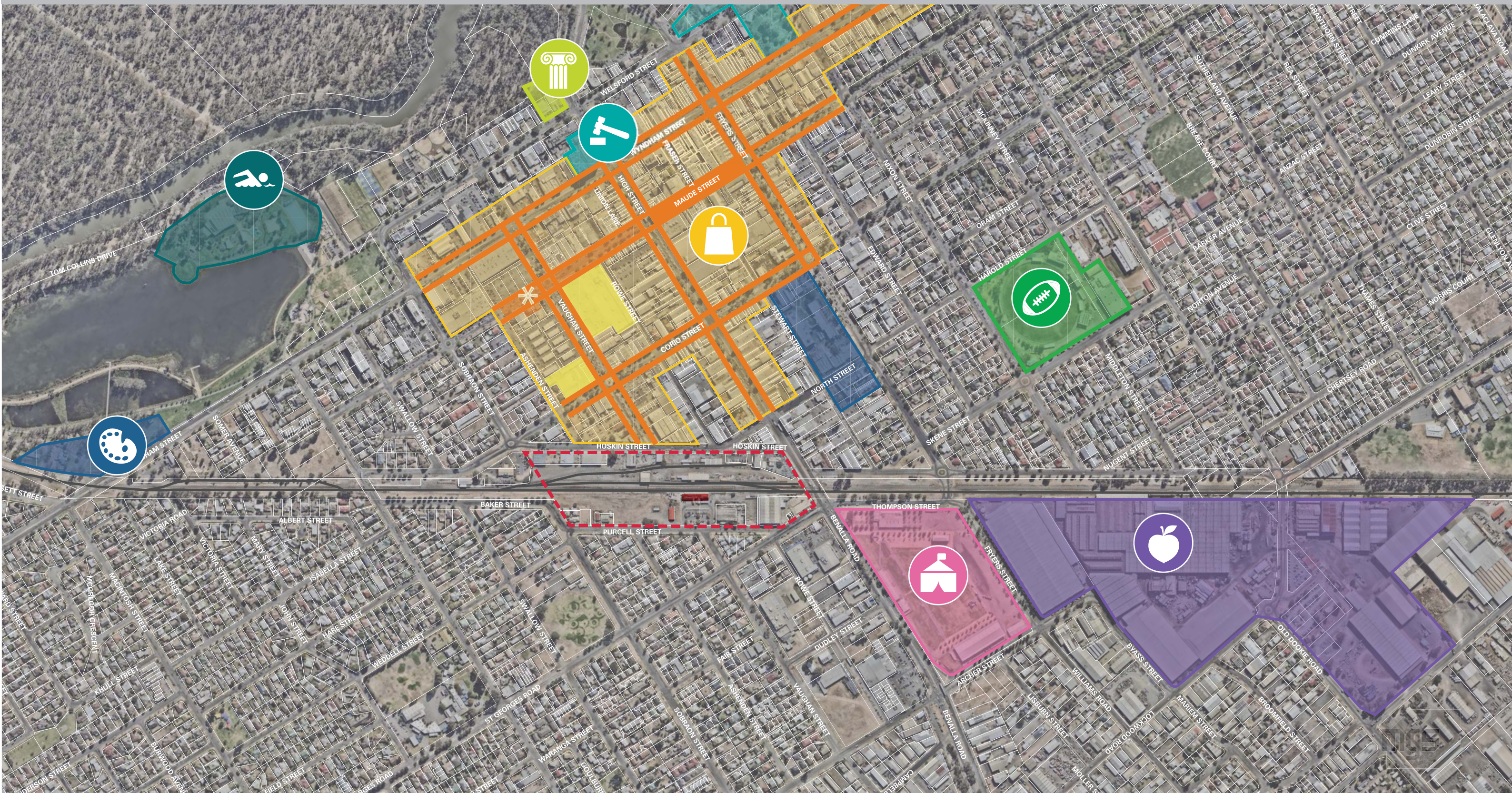


**SHEPPARTON  
RAILWAY STATION  
PEDESTRIAN OVERPASS  
CONCEPT DESIGN  
October 2018**





# Introduction Shepparton CBD Context





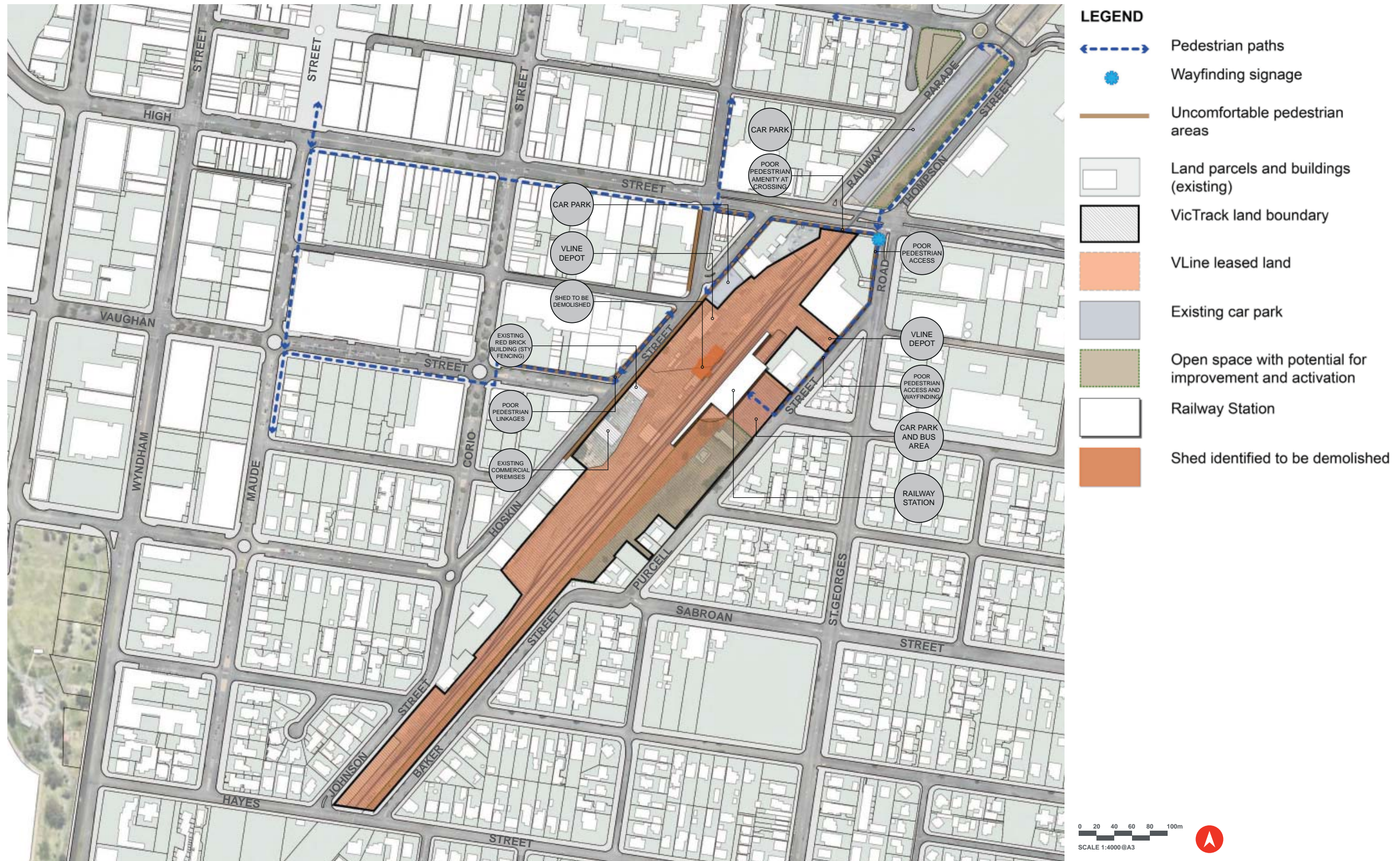
## Introduction Land Ownership / Station Precinct Fixed Infrastructure



Figure 6 Shepparton Rail Precinct with overview of existing buildings and property boundaries

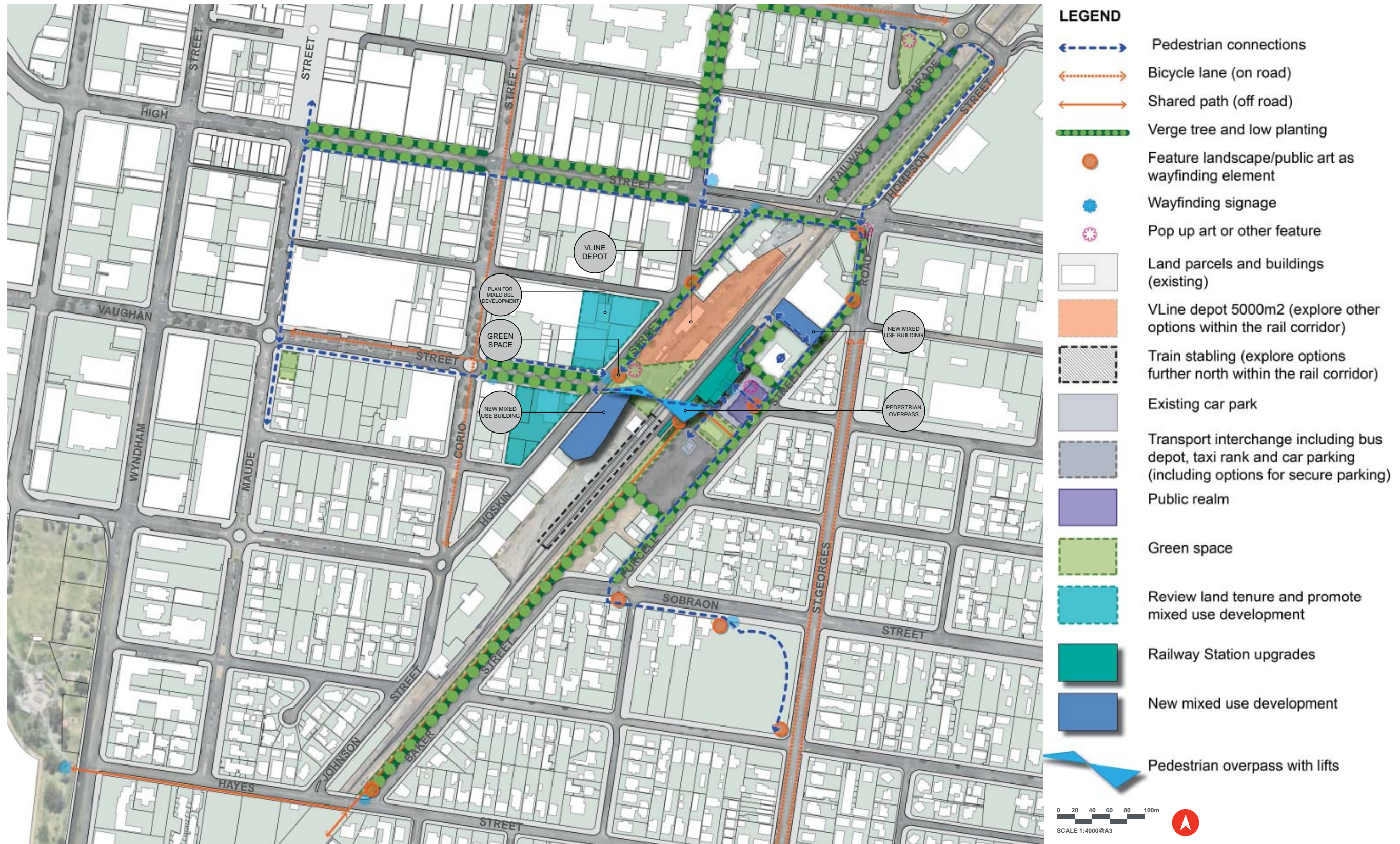


# Site Masterplan Existing Conditions (Shepparton Railway Precinct Master Plan)



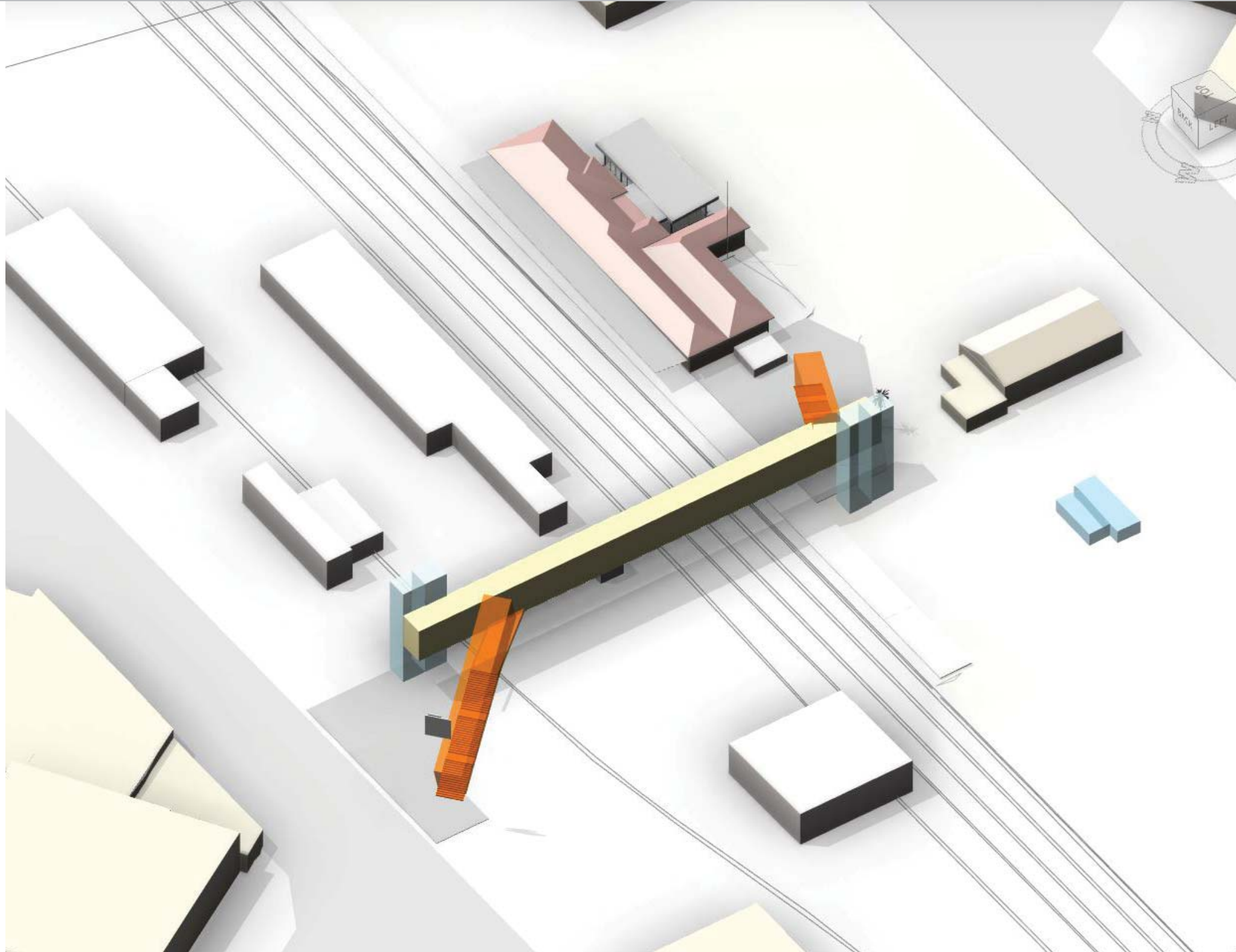


# Site Masterplan Medium Term Implementation (Shepparton Railway Precinct Master Plan)





## Geometric Requirements Clearance and Heights



### Key parameters:

- Underside clearance of 7.1m above rail level
- Bridge FFL above top of rail 7.8mm above rail level
- 2 elevators on both sides of bridge entrance based on PTV Vertical Access Requirements
- Ramps not required due to height differential
- 3.0m wide bridge footpath clearance
- 2.9m wide stairs to allow 2.6m clear passage
- Visibility towards elevator and stairs from street / platform levels.
- Continuous undercover bridge and stairs

# Overpass alignment options



# Alignment Options Scenario





# Final Alignment



1. Distance view from Vaughan St West - Approach from Town Centre



2. Close-up view from Vaughan St West - Existing brick building to be demolished for new entry to pedestrian overpass



3. Distance view from Vaughan St East



4. Close-up view from Station Drop Off Area



# Preferred Option Theme: Industry





## 'Industry' theme

The proposal is a playful reference to fruit travelling on a conveyor belt. The fruit is referenced through bright colours claddings that wrap either side of the bridge for, stairs and around the lift cores.

Although this option includes colour across the bridge structure, depending on the vantage point, the colour will become more or less apparent, essentially disappearing on the approach of a train driver to mitigate signal sighting issues. This effect creates a dynamic visual effect where colours fade and change depending on the viewing angle.



# Architectural Concept



Artist Impression\_View From West (Vaughan Street)





# Architectural Concept



Artist Impression\_View From East (Station Car Park)





# Architectural Concept



Artist Impression View From West (Vaughan Street)





# Architectural Concept



Aerial view from Northeast (Station)



# Architectural Concept

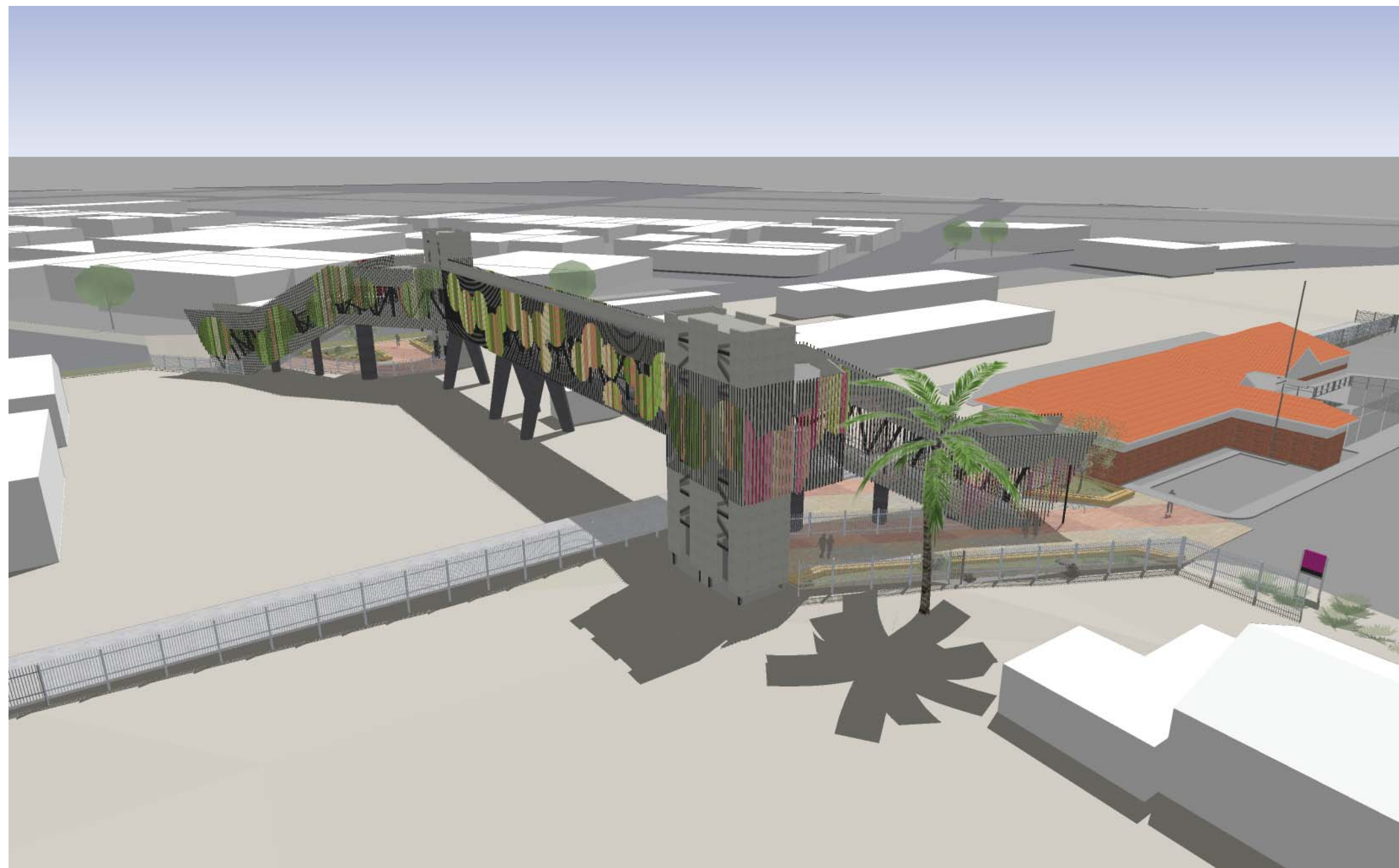


Aerial view from Northwest (Hoskin Street)





# Architectural Concept



Aerial view from Southeast (Station)





# Architectural Concept



Aerial view from Southwest (Hoskin Street)



# Architectural Concept



View from Existing Station's Platform



# Architectural Concept



View inside pedestrian overpass





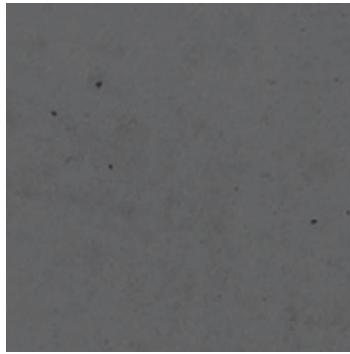
# Architectural Concept

## Finishes & Materials



Plain concrete

Columns, Stairs,  
Bridge Soffit and  
Balustrade



Stained concrete

Bridge supports



Painted steel

Steel structures



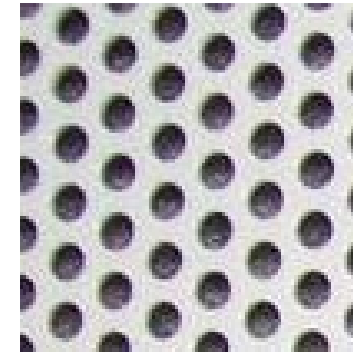
Colorbond metal

Roof cladding



Epoxy paint  
finish to concrete  
surface

Bridge floors and  
Stairs



Perforated metal  
screen in power  
coat

Bridge and stairs  
screens



Painted metal

Bridge screens



# Landscaping (Forecourts)

Forecourt\_Station Entry



Forecourt\_Vaughan & Hoskin Street Entry



Precedent Images



Landscape Seat



Sculpture



Ornamental Trees

Each of the options includes a modest, landscaped plaza as a landing point of the bridge at both the station and Hoskin Street interfaces. The Hoskin Street plaza would also provide a sense of forecourt or address for the station at this interface, including provision of standard PTV/VLine signage. These areas would be paved with a blend of granites, providing warm earthy tones reminiscent of the local geology.

Soft landscaped areas are framed with public bench seating. The materiality of the seating varies between the options and the intention would be to incorporate integrated graphics/art into the structure that would tell a local story (details of which will depend on the selected theme and are to be developed in proceeding design studies).

The proposal includes tree planting. The selection of trees could include varieties such as flowering peaches that would provide a spark of colour to the forecourt spaces and reference to the local production agriculture and industry product.

There is the option to replace parts of the landscape with art sculptures (per opportunities identified in Council's Shepparton Railway Precinct Master Plan document).



# Other Opportunities

## Precedent Images

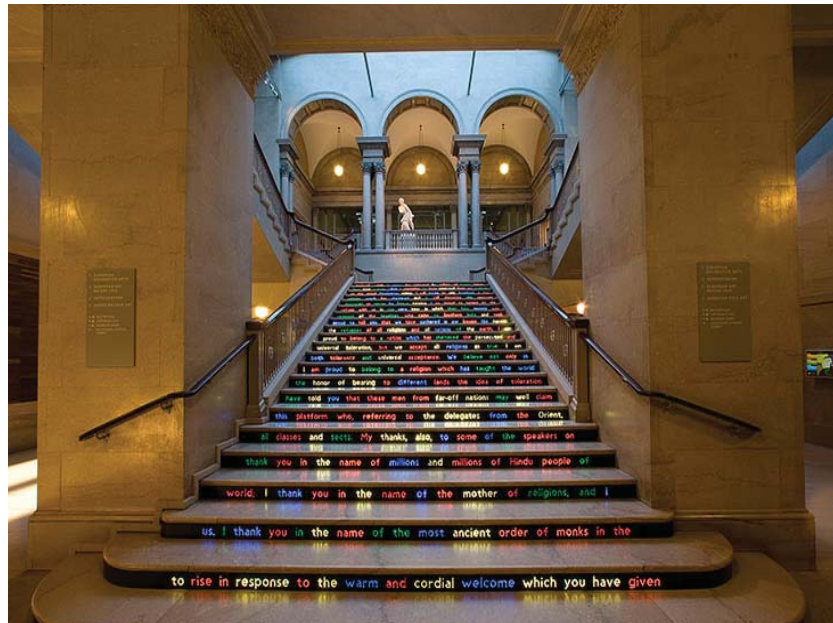


Illumination



There are other opportunities for increasing interaction with the bridge structures. Specific opportunities raised include:

- Using surfaces for evening projections and night time illumination of elements of the bridge to enhance its visual profile at night time
- Incorporating pedestrian counters in the stairs noting that, anecdotally, locals like to use stairs as part of an exercise regime
- Incorporating a bicycle channel into the side of the stairs (subject to compliance issues), as an active alternative to utilising the lifts



Integrated Art



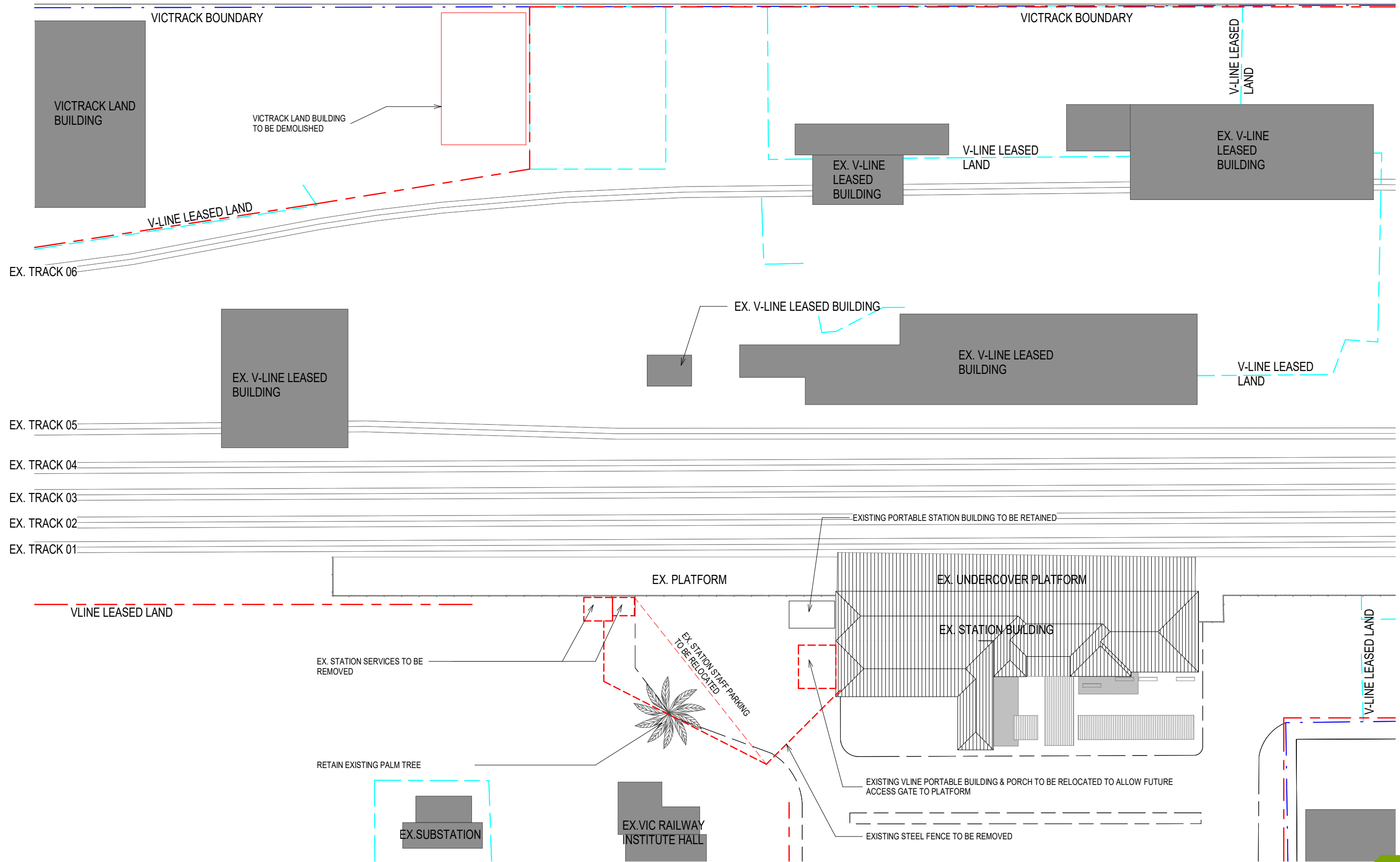
Alternative Access



# Architectural Drawings



# HOSKIN STREET



REVISIONS

PROJECT  
SHEPPARTON RAILWAY  
PEDESTRIAN OVERPASS  
**ISSUE FOR  
PRELIMINARY COSTING**

PROJECT NUMBER  
18068

CLIENT  
GREATER  
SHEPPARTON CITY  
COUNCIL

DRAWING TITLE  
DEMOLITION PLAN

DRAWN BY  
AF

CHECKED BY  
AF

DATE  
26.06.2018

SCALE  
1 : 500 @ A3



DRAWING NUMBER  
SK0200

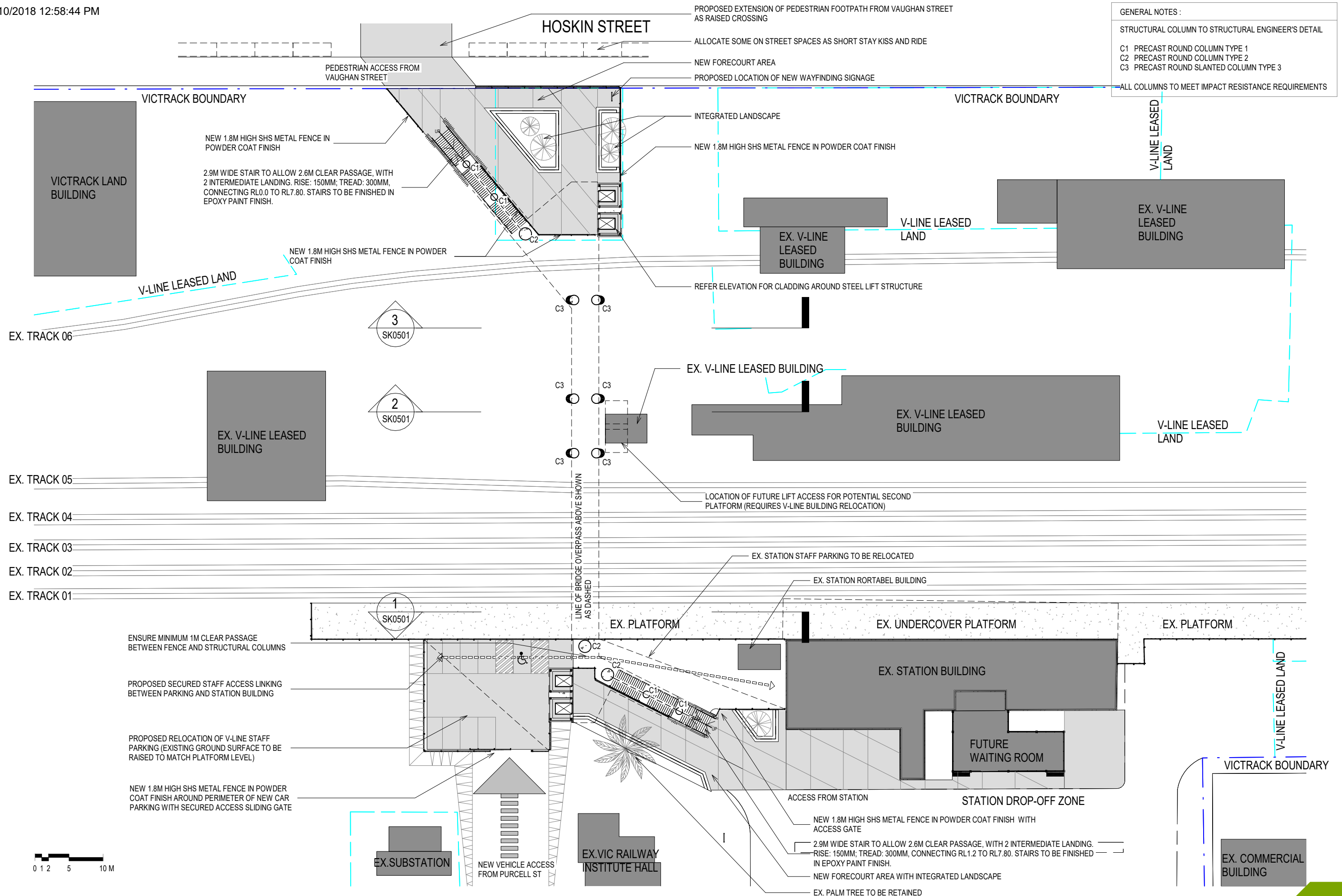
REVISION

REPRODUCTION OF THE WHOLE OR PART OF THIS DOCUMENT CONSTITUTES AN INFRINGEMENT OF COPYRIGHT. THE INFORMATION, IDEAS AND CONCEPTS CONTAINED IN THIS DOCUMENT ARE CONFIDENTIAL. THE RECIPIENT(S) OF THIS DOCUMENT IS PROHIBITED FROM DISCLOSING SUCH INFORMATION, IDEAS AND CONCEPTS TO ANY PERSON WITHOUT THE PRIOR WRITTEN CONSENT OF MGS ARCHITECTS PTY LTD.

MGS ARCHITECTS PTY LTD | ABN 13 006 488 302 |  
MGSARCHITECTS.COM.AU  
10-22 MANTON LANE MELBOURNE 3000 AUSTRALIA | T +61 3 9670 1800







GENERAL NOTES :

STRUCTURAL COLUMN TO STRUCTURAL ENGINEER'S DETAIL

C1 PRECAST ROUND COLUMN TYPE 1  
 C2 PRECAST ROUND COLUMN TYPE 2  
 C3 PRECAST ROUND SLANTED COLUMN TYPE 3

ALL COLUMNS TO MEET IMPACT RESISTANCE REQUIREMENTS

REVISIONS

PROJECT  
 SHEPPARTON RAILWAY  
 PEDESTRIAN OVERPASS  
**ISSUE FOR  
 PRELIMINARY COSTING**

PROJECT NUMBER  
 18068

CLIENT  
 GREATER  
 SHEPPARTON CITY  
 COUNCIL

DRAWING TITLE  
 PLATFORM LEVEL PLAN

DRAWN BY  
 Author

CHECKED BY  
 Checker

DATE  
 26.06.2018

SCALE  
 1 : 500 @ A3

DRAWING NUMBER  
 SK0201

REVISION

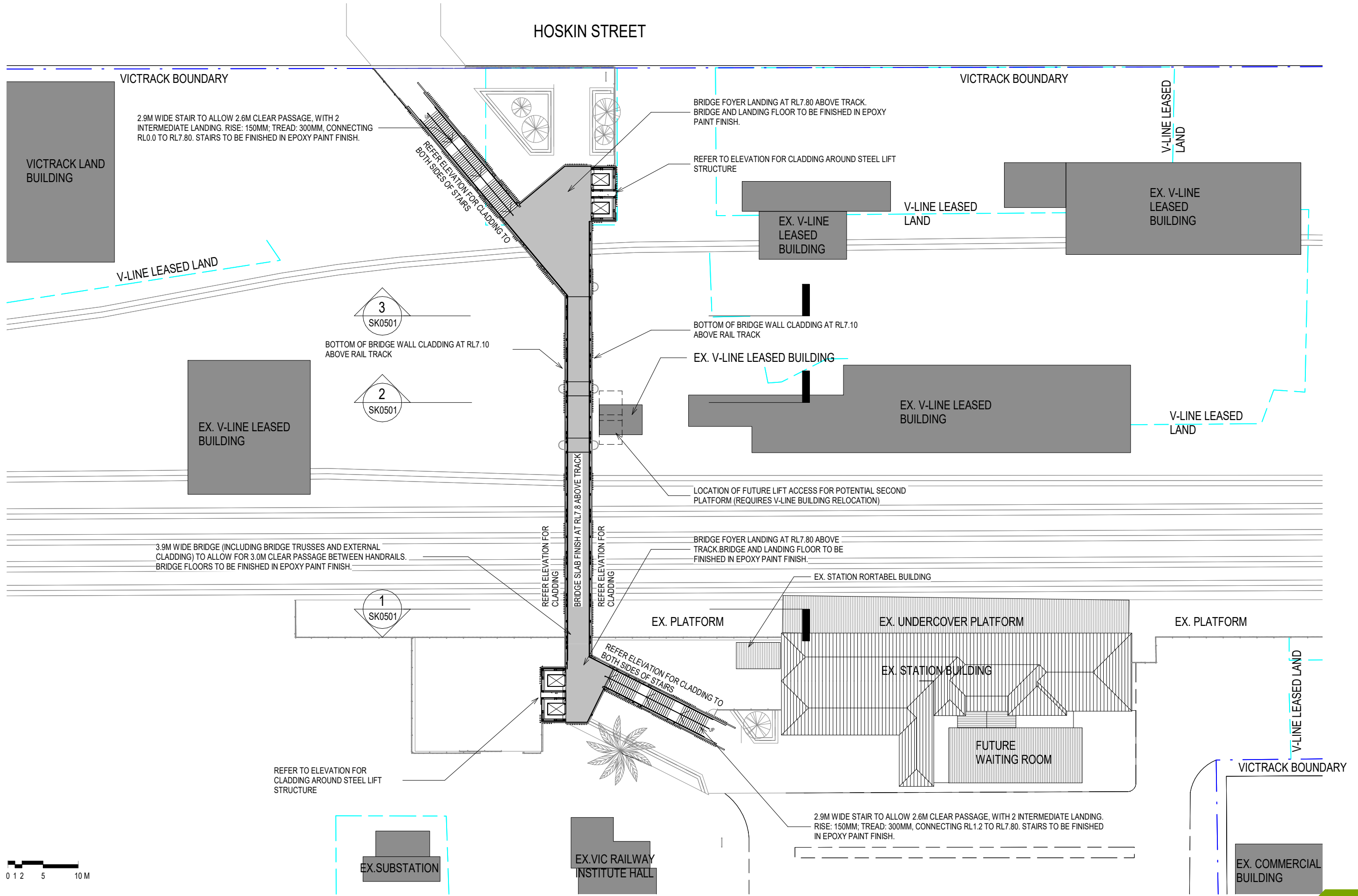
REPRODUCTION OF THE WHOLE OR PART OF THIS DOCUMENT CONSTITUTES AN INFRINGEMENT OF COPYRIGHT. THE INFORMATION, IDEAS AND CONCEPTS CONTAINED IN THIS DOCUMENT ARE CONFIDENTIAL. THE RECIPIENT(S) OF THIS DOCUMENT IS PROHIBITED FROM DISCLOSING SUCH INFORMATION, IDEAS AND CONCEPTS TO ANY PERSON WITHOUT THE PRIOR WRITTEN CONSENT OF MGS ARCHITECTS PTY LTD.

MGS ARCHITECTS PTY LTD | ABN 13 006 488 302 |  
 MGSARCHITECTS.COM.AU  
 10-22 MANTON LANE MELBOURNE 3000 AUSTRALIA | T +61 3 9670 1800





HOSKIN STREET



REVISIONS

PROJECT  
SHEPPARTON RAILWAY  
PEDESTRIAN OVERPASS  
**ISSUE FOR  
PRELIMINARY COSTING**

PROJECT NUMBER  
18068

CLIENT  
GREATER  
SHEPPARTON CITY  
COUNCIL

DRAWING TITLE  
BRIDGE LEVEL PLAN

DRAWN BY  
Author

CHECKED BY  
Checker

DATE  
26.06.2018

SCALE  
1 : 500 @ A3

DRAWING NUMBER  
SK0202

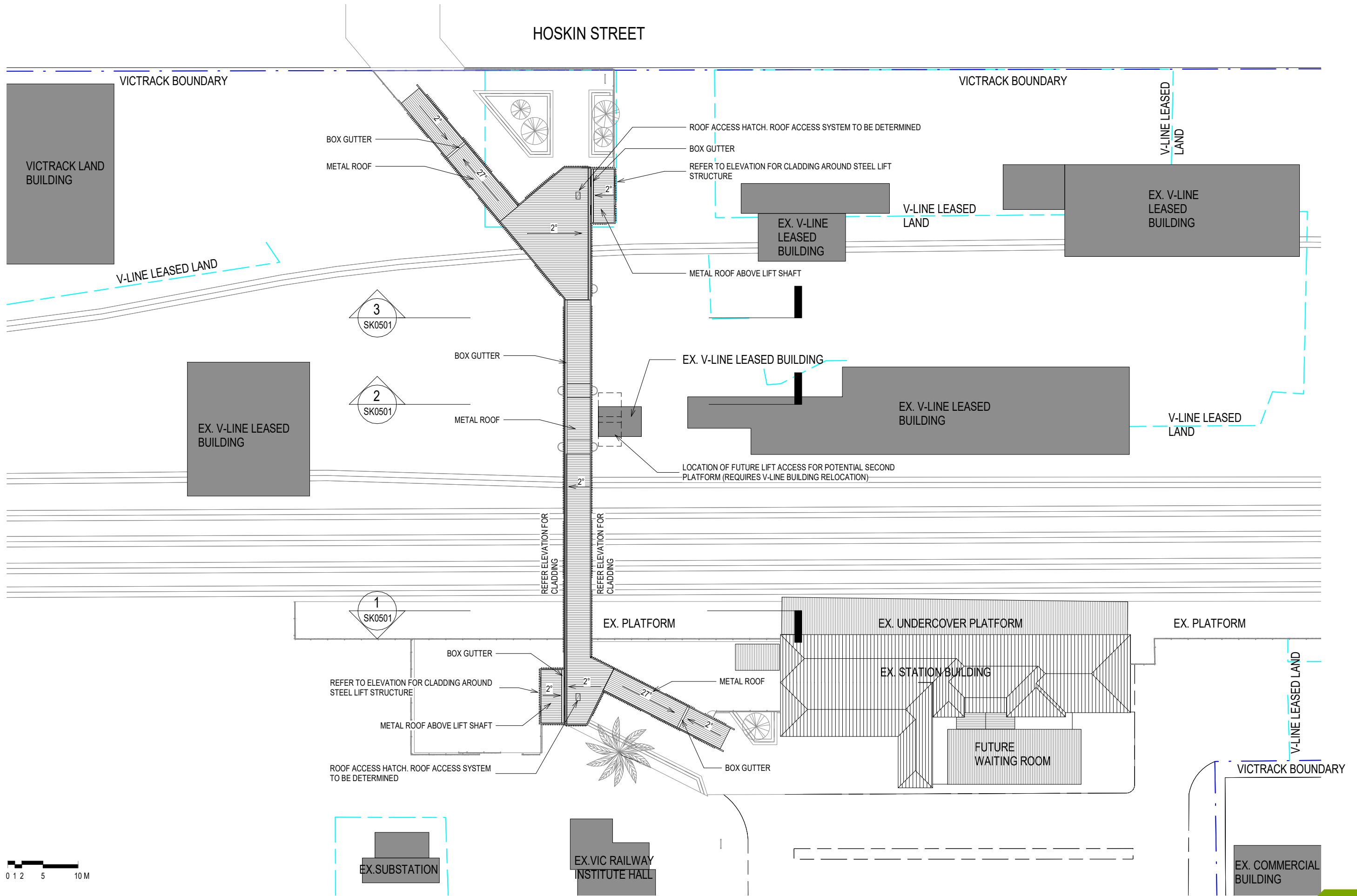
REVISION

REPRODUCTION OF THE WHOLE OR PART OF THIS DOCUMENT CONSTITUTES AN INFRINGEMENT OF COPYRIGHT. THE INFORMATION, IDEAS AND CONCEPTS CONTAINED IN THIS DOCUMENT ARE CONFIDENTIAL. THE RECIPIENT(S) OF THIS DOCUMENT IS PROHIBITED FROM DISCLOSING SUCH INFORMATION, IDEAS AND CONCEPTS TO ANY PERSON WITHOUT THE PRIOR WRITTEN CONSENT OF MGS ARCHITECTS PTY LTD.

MGS ARCHITECTS PTY LTD | ABN 13 006 488 302 |  
MGSARCHITECTS.COM.AU  
10-22 MANTON LANE MELBOURNE 3000 AUSTRALIA | T +61 3 9670 1800







REVISIONS

PROJECT  
SHEPPARTON RAILWAY  
PEDESTRIAN OVERPASS  
**ISSUE FOR  
PRELIMINARY COSTING**

PROJECT NUMBER  
18068

CLIENT  
GREATER  
SHEPPARTON CITY  
COUNCIL

DRAWING TITLE  
ROOF LEVEL PLAN

DRAWN BY  
Author

CHECKED BY  
Checker

DATE  
26.06.2018

SCALE  
1 : 500 @ A3

DRAWING NUMBER  
SK0203

REVISION

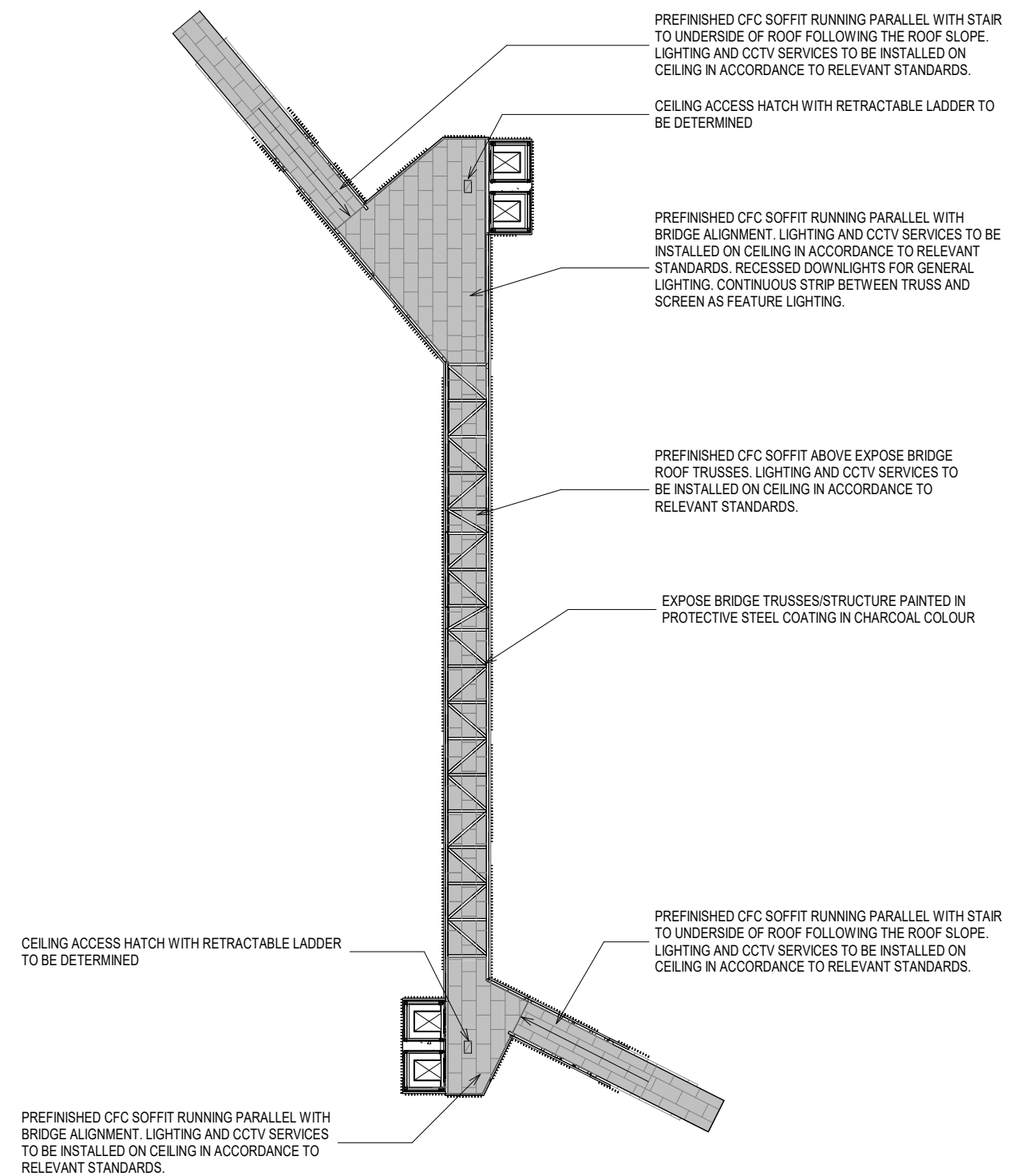
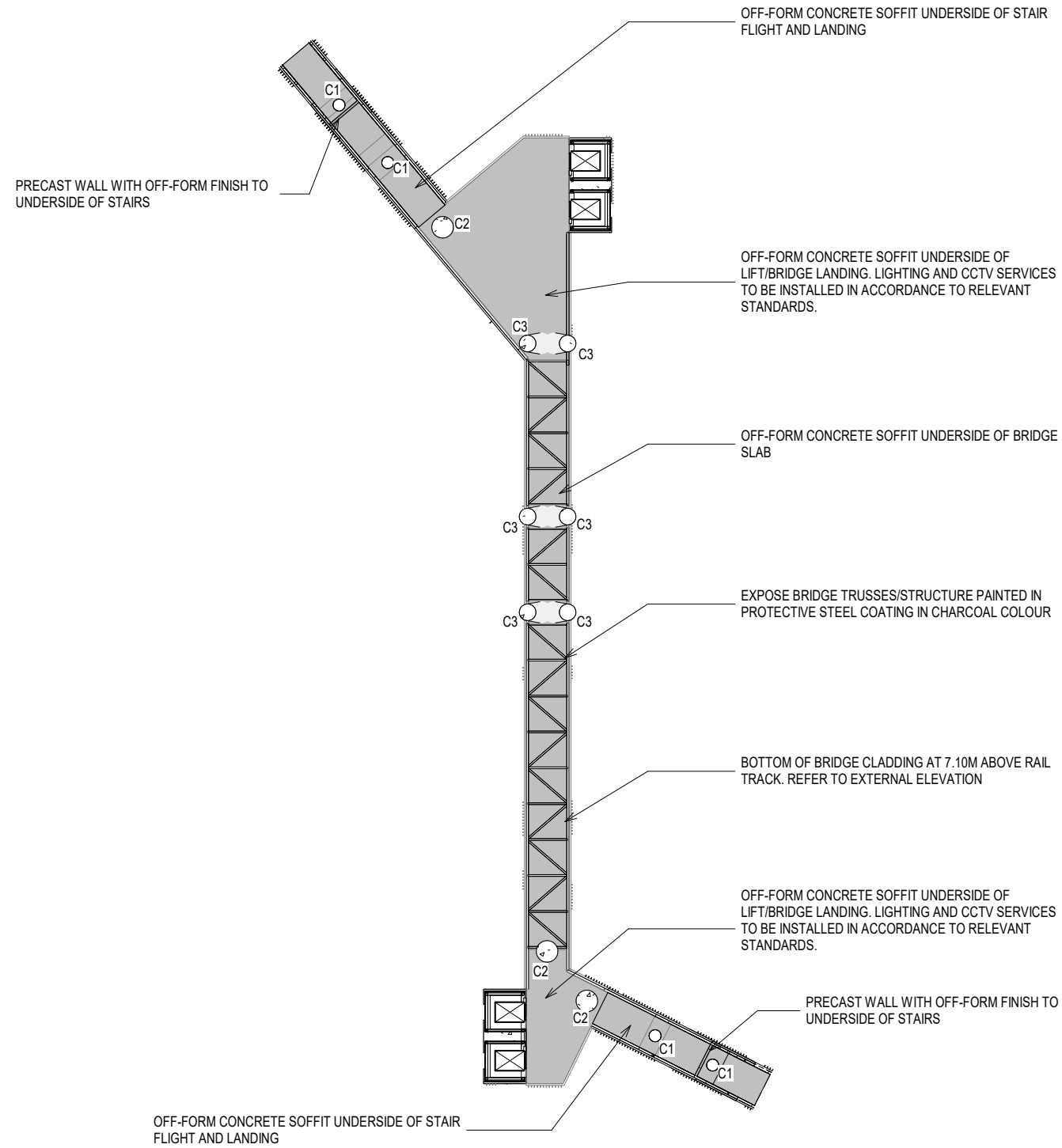
REPRODUCTION OF THE WHOLE OR PART OF THIS DOCUMENT CONSTITUTES AN INFRINGEMENT OF COPYRIGHT. THE INFORMATION, IDEAS AND CONCEPTS CONTAINED IN THIS DOCUMENT ARE CONFIDENTIAL. THE RECIPIENT(S) OF THIS DOCUMENT IS PROHIBITED FROM DISCLOSING SUCH INFORMATION, IDEAS AND CONCEPTS TO ANY PERSON WITHOUT THE PRIOR WRITTEN CONSENT OF MGS ARCHITECTS PTY LTD.

MGS ARCHITECTS PTY LTD | ABN 13 006 488 302 |  
MGSARCHITECTS.COM.AU  
10-22 MANTON LANE MELBOURNE 3000 AUSTRALIA | T +61 3 9670 1800





GENERAL NOTES :  
 STRUCTURAL COLUMN TO STRUCTURAL ENGINEER'S DETAIL  
 C1 PRECAST ROUND COLUMN TYPE 1  
 C2 PRECAST ROUND COLUMN TYPE 2  
 C3 PRECAST ROUND SLANTED COLUMN TYPE 3  
 ALL COLUMNS TO MEET IMPACT RESISTANCE REQUIREMENTS



**1** PLATFORM LEVEL RCP  
 SK0401 1 : 500

**2** BRIDGE FLOOR LEVEL RCP  
 SK0401 1 : 500



REVISIONS

PROJECT  
 SHEPPARTON RAILWAY  
 PEDESTRIAN OVERPASS  
**ISSUE FOR  
 PRELIMINARY COSTING**

PROJECT NUMBER  
 18068

CLIENT  
 GREATER  
 SHEPPARTON CITY  
 COUNCIL

DRAWING TITLE  
 REFLECTED CEILING PLAN

DRAWN BY  
 Author

CHECKED BY  
 Checker

DATE  
 26.06.2018

SCALE  
 1 : 500 @ A3



DRAWING NUMBER  
**SK0301**

REVISION

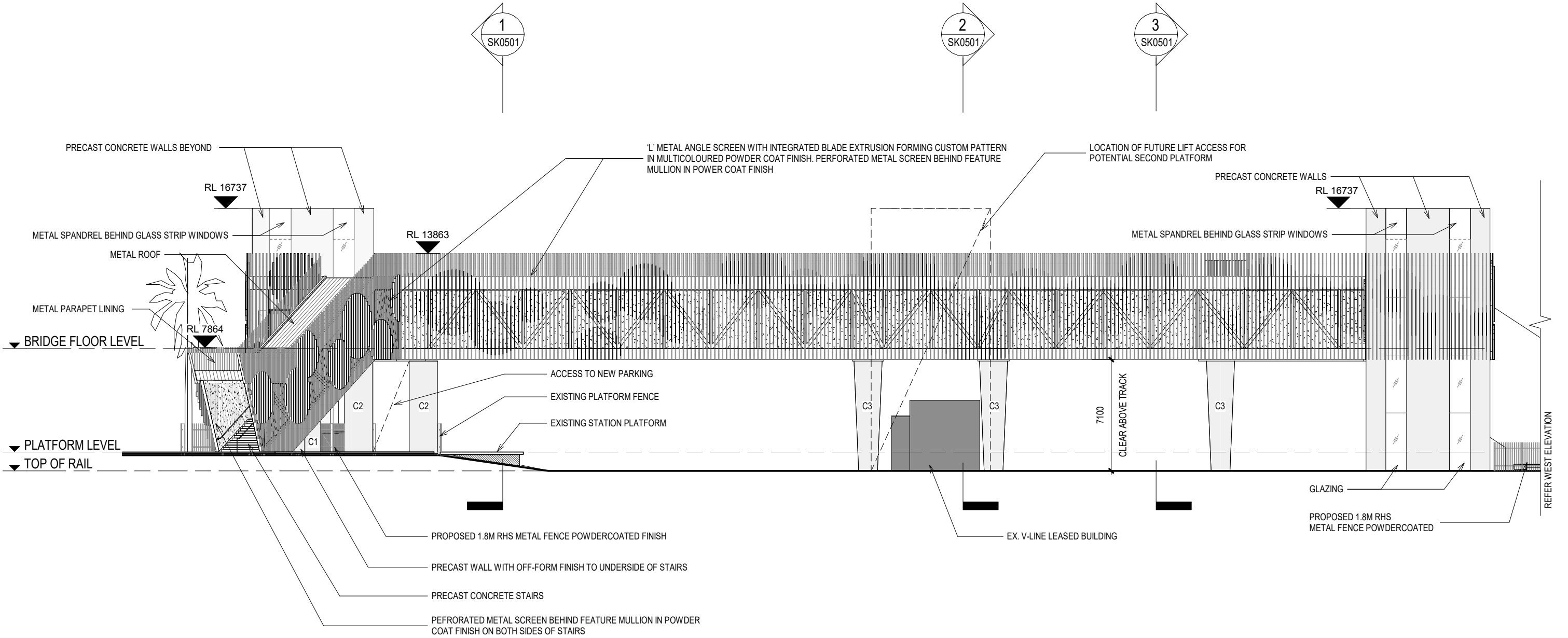
REPRODUCTION OF THE WHOLE OR PART OF THIS DOCUMENT CONSTITUTES AN INFRINGEMENT OF COPYRIGHT. THE INFORMATION, IDEAS AND CONCEPTS CONTAINED IN THIS DOCUMENT ARE CONFIDENTIAL. THE RECIPIENT(S) OF THIS DOCUMENT IS PROHIBITED FROM DISCLOSING SUCH INFORMATION, IDEAS AND CONCEPTS TO ANY PERSON WITHOUT THE PRIOR WRITTEN CONSENT OF MGS ARCHITECTS PTY LTD.

MGS ARCHITECTS PTY LTD | ABN 13 006 488 302 |  
 MGSARCHITECTS.COM.AU  
 10-22 MANTON LANE MELBOURNE 3000 AUSTRALIA | T +61 3 9670 1800

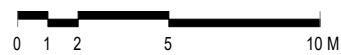




GENERAL NOTES :  
 STRUCTURAL COLUMN TO STRUCTURAL ENGINEER'S DETAIL  
 C1 PRECAST ROUND COLUMN TYPE 1  
 C2 PRECAST ROUND COLUMN TYPE 2  
 C3 PRECAST ROUND SLANTED COLUMN TYPE 3  
 ALL COLUMNS TO MEET IMPACT RESISTANCE REQUIREMENTS



1 NORTH ELEVATION  
 SK0000 1 : 250



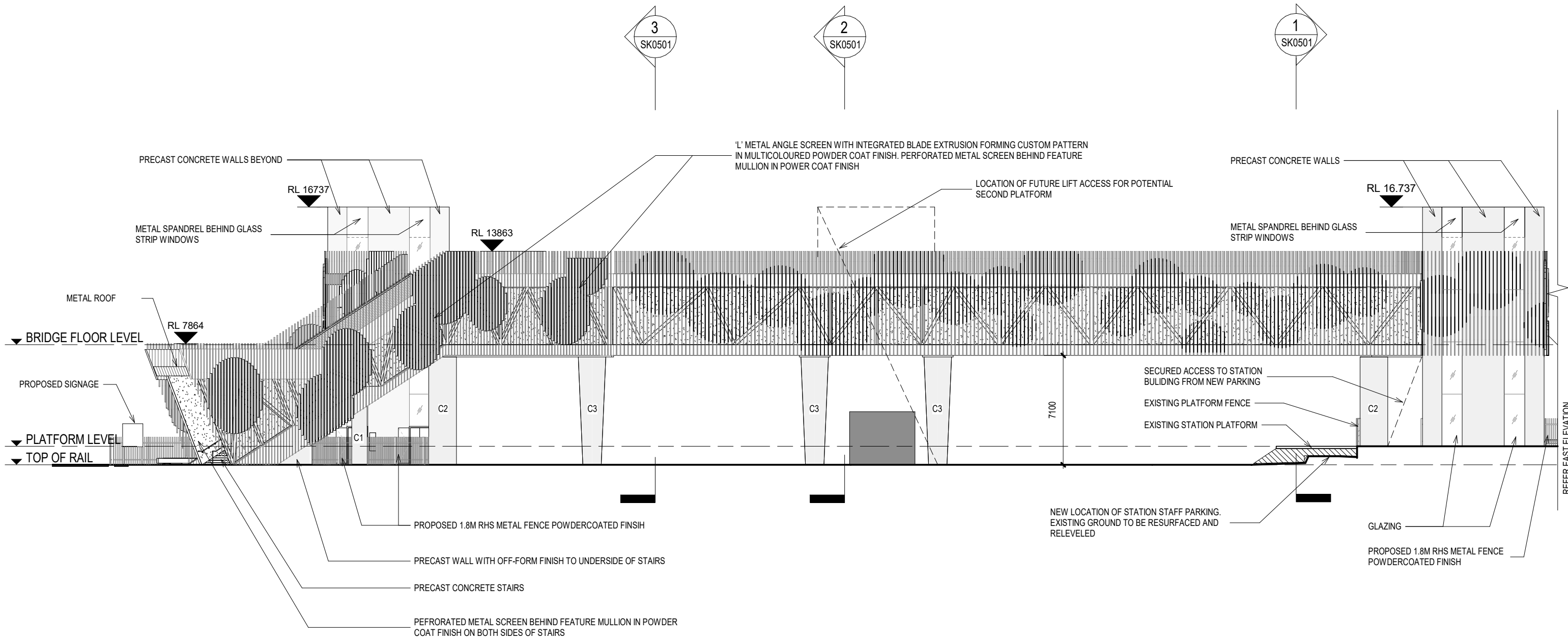
REVISIONS

PROJECT SHEPPARTON RAILWAY PEDESTRIAN OVERPASS <b>ISSUE FOR PRELIMINARY COSTING</b>	PROJECT NUMBER 18068	CLIENT GREATER SHEPPARTON CITY COUNCIL	DRAWING TITLE ELEVATIONS_NORTH	DRAWN BY Author	CHECKED BY Checker	DATE 26.06.2018	SCALE 1 : 250 @ A3	DRAWING NUMBER SK0401	REVISION
REPRODUCTION OF THE WHOLE OR PART OF THIS DOCUMENT CONSTITUTES AN INFRINGEMENT OF COPYRIGHT. THE INFORMATION, IDEAS AND CONCEPTS CONTAINED IN THIS DOCUMENT ARE CONFIDENTIAL. THE RECIPIENT(S) OF THIS DOCUMENT IS PROHIBITED FROM DISCLOSING SUCH INFORMATION, IDEAS AND CONCEPTS TO ANY PERSON WITHOUT THE PRIOR WRITTEN CONSENT OF MGS ARCHITECTS PTY LTD.									
MGS ARCHITECTS PTY LTD   ABN 13 006 488 302   MGSARCHITECTS.COM.AU   10-22 MANTON LANE MELBOURNE 3000 AUSTRALIA   T +61 3 9670 1800									

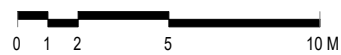




GENERAL NOTES :  
 STRUCTURAL COLUMN TO STRUCTURAL ENGINEER'S DETAIL  
 C1 PRECAST ROUND COLUMN TYPE 1  
 C2 PRECAST ROUND COLUMN TYPE 2  
 C3 PRECAST ROUND SLANTED COLUMN TYPE 3  
 ALL COLUMNS TO MEET IMPACT RESISTANCE REQUIREMENTS



**1 SOUTH ELEVATION**  
 SK0000 1 : 250



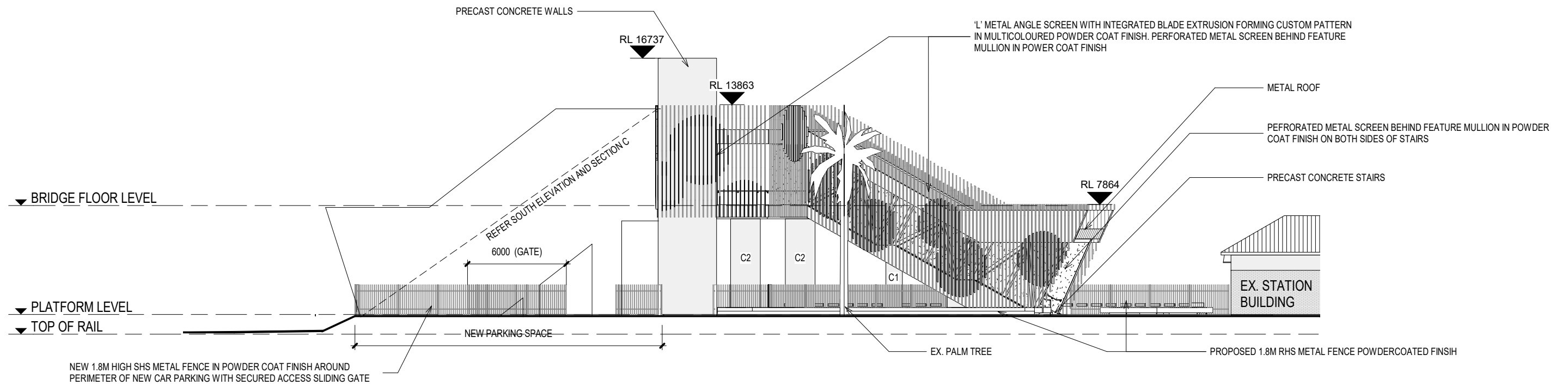
REVISIONS

PROJECT SHEPPARTON RAILWAY PEDESTRIAN OVERPASS <b>ISSUE FOR PRELIMINARY COSTING</b>	PROJECT NUMBER 18068	CLIENT GREATER SHEPPARTON CITY COUNCIL	DRAWING TITLE ELEVATION_SOUTH	DRAWN BY Author	CHECKED BY Checker	DATE 26.06.2018	SCALE 1 : 250 @ A3	DRAWING NUMBER SK0402	REVISION
REPRODUCTION OF THE WHOLE OR PART OF THIS DOCUMENT CONSTITUTES AN INFRINGEMENT OF COPYRIGHT. THE INFORMATION, IDEAS AND CONCEPTS CONTAINED IN THIS DOCUMENT ARE CONFIDENTIAL. THE RECIPIENT(S) OF THIS DOCUMENT IS PROHIBITED FROM DISCLOSING SUCH INFORMATION, IDEAS AND CONCEPTS TO ANY PERSON WITHOUT THE PRIOR WRITTEN CONSENT OF MGS ARCHITECTS PTY LTD.									
MGS ARCHITECTS PTY LTD   ABN 13 006 488 302   MGSARCHITECTS.COM.AU   10-22 MANTON LANE MELBOURNE 3000 AUSTRALIA   T +61 3 9670 1800									

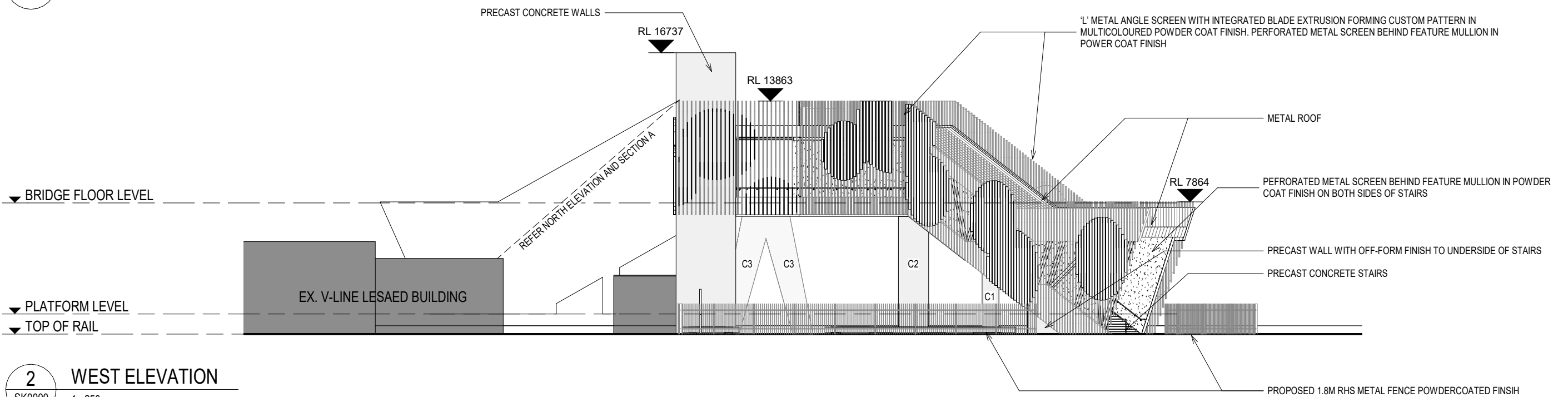




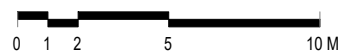
GENERAL NOTES :  
 STRUCTURAL COLUMN TO STRUCTURAL ENGINEER'S DETAIL  
 C1 PRECAST ROUND COLUMN TYPE 1  
 C2 PRECAST ROUND COLUMN TYPE 2  
 C3 PRECAST ROUND SLANTED COLUMN TYPE 3  
 ALL COLUMNS TO MEET IMPACT RESISTANCE REQUIREMENTS



**1 EAST ELEVATION**  
 SK0000 1 : 250



**2 WEST ELEVATION**  
 SK0000 1 : 250



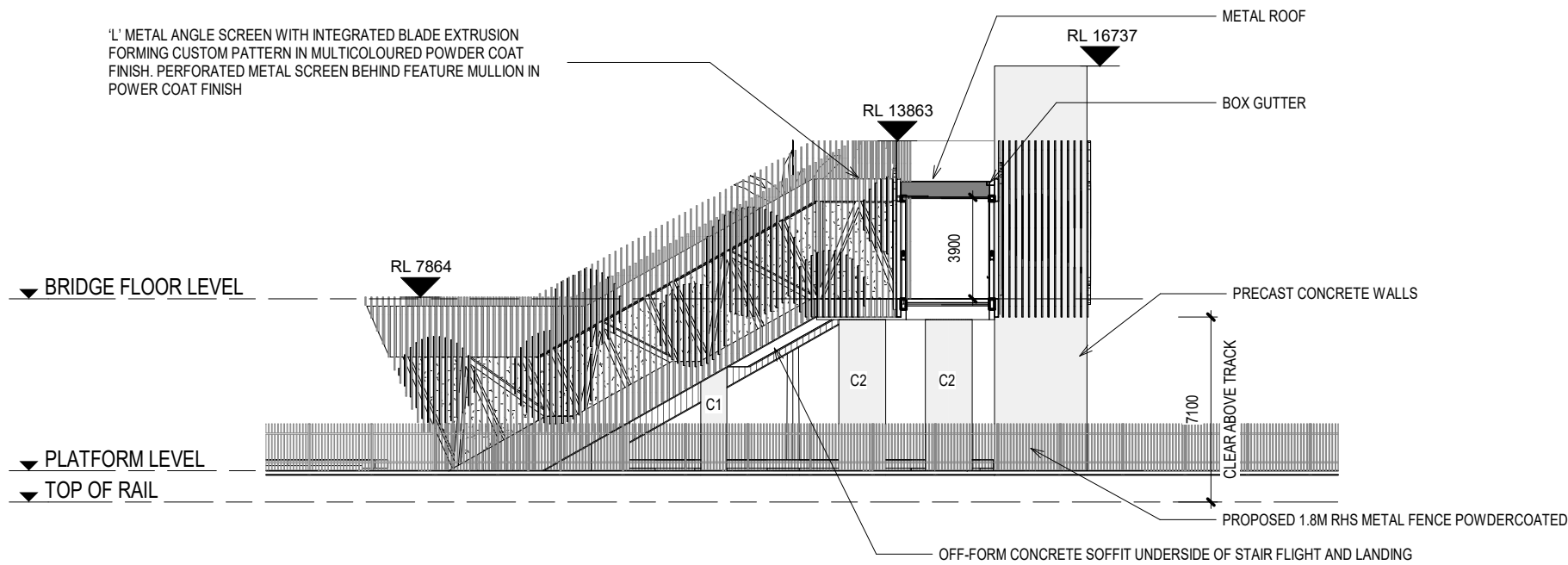
REVISIONS

PROJECT SHEPPARTON RAILWAY PEDESTRIAN OVERPASS <b>ISSUE FOR PRELIMINARY COSTING</b>	PROJECT NUMBER 18068	CLIENT GREATER SHEPPARTON CITY COUNCIL	DRAWING TITLE ELEVATIONS_EAST AND WEST	DRAWN BY Author	CHECKED BY Checker	DATE 26.06.2018	SCALE 1 : 250 @ A3	DRAWING NUMBER SK0403	REVISION
<small>REPRODUCTION OF THE WHOLE OR PART OF THIS DOCUMENT CONSTITUTES AN INFRINGEMENT OF COPYRIGHT. THE INFORMATION, IDEAS AND CONCEPTS CONTAINED IN THIS DOCUMENT ARE CONFIDENTIAL. THE RECIPIENT(S) OF THIS DOCUMENT IS PROHIBITED FROM DISCLOSING SUCH INFORMATION, IDEAS AND CONCEPTS TO ANY PERSON WITHOUT THE PRIOR WRITTEN CONSENT OF MGS ARCHITECTS PTY LTD.</small>									
<small>MGS ARCHITECTS PTY LTD   ABN 13 006 488 302   MGSARCHITECTS.COM.AU   10-22 MANTON LANE MELBOURNE 3000 AUSTRALIA   T +61 3 9670 1800</small>									

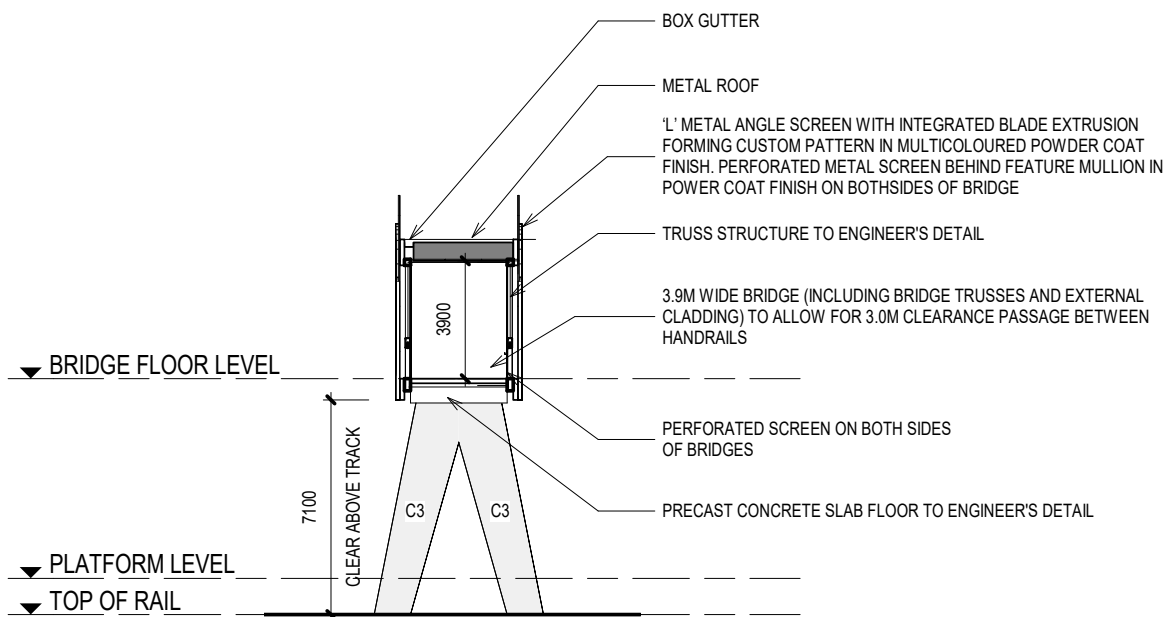




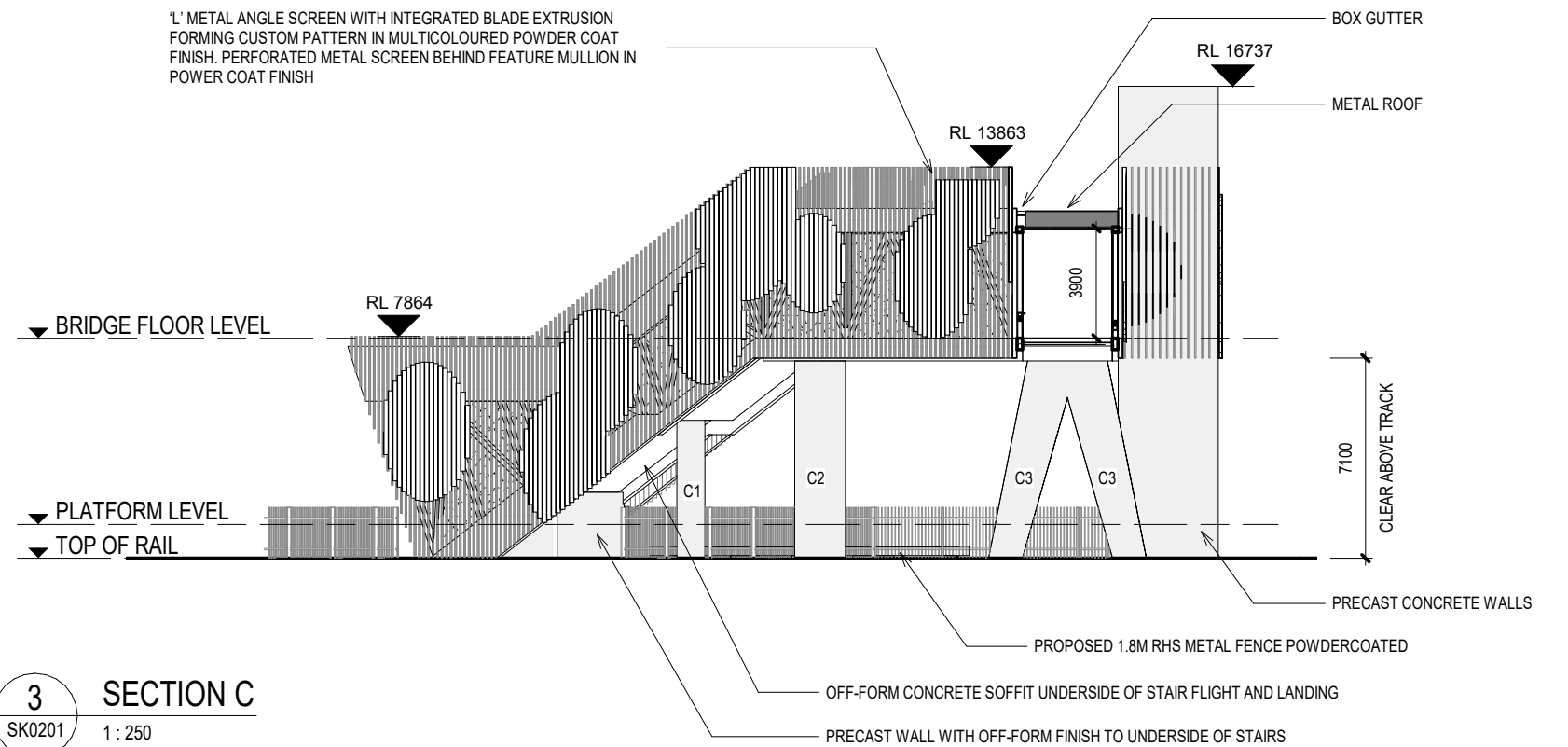
GENERAL NOTES :  
 STRUCTURAL COLUMN TO STRUCTURAL ENGINEER'S DETAIL  
 C1 PRECAST ROUND COLUMN TYPE 1  
 C2 PRECAST ROUND COLUMN TYPE 2  
 C3 PRECAST ROUND SLANTED COLUMN TYPE 3  
 ALL COLUMNS TO MEET IMPACT RESISTANCE REQUIREMENTS



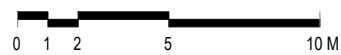
**1 SECTION A**  
 SK0201 1 : 250



**2 SECTION B**  
 SK0201 1 : 250



**3 SECTION C**  
 SK0201 1 : 250



REVISIONS

PROJECT SHEPPARTON RAILWAY PEDESTRIAN OVERPASS <b>ISSUE FOR PRELIMINARY COSTING</b>	PROJECT NUMBER 18068	CLIENT GREATER SHEPPARTON CITY COUNCIL	DRAWING TITLE SECTIONS	DRAWN BY AF	CHECKED BY AF	DATE 26.06.2018	SCALE 1 : 250 @ A3	DRAWING NUMBER SK0501	REVISION
REPRODUCTION OF THE WHOLE OR PART OF THIS DOCUMENT CONSTITUTES AN INFRINGEMENT OF COPYRIGHT. THE INFORMATION, IDEAS AND CONCEPTS CONTAINED IN THIS DOCUMENT ARE CONFIDENTIAL. THE RECIPIENT(S) OF THIS DOCUMENT IS PROHIBITED FROM DISCLOSING SUCH INFORMATION, IDEAS AND CONCEPTS TO ANY PERSON WITHOUT THE PRIOR WRITTEN CONSENT OF MGS ARCHITECTS PTY LTD.									
MGS ARCHITECTS PTY LTD   ABN 13 006 488 302   MGSARCHITECTS.COM.AU   10-22 MANTON LANE MELBOURNE 3000 AUSTRALIA   T +61 3 9670 1800									





